

## Inner-City Children Spend A Fun Day On The Farm

LANCASTER (Lancaster Co.) — Seventy-five students ages 3 to 5 were given the unique opportunity to experience life on a fully functioning Lancaster County farm.

The K-3 and K-4 students, all members of the School District of Lancaster, visited the Country Barn Farm and Market, a fifth generation, 90-acre family farm managed by "Farmer Jim" Stauffer and his parents. The farm produces everything from eggs and beef to crops such as sweet corn, soybeans, potatoes, strawberries, and pumpkins.

The children got an excellent education in farming from "Farmer Jim," who taught them

how a crop gets into the ground, how it's harvested, and the importance of the weather and proper soil management. "We've been doing school tours here at the farm for five years," said Mr. Stauffer.

The day was made possible by a local farm equipment dealer, Hooper Incorporated, Inter-course. Hooper funded the costs for the day and the transportation for the children.

Daryl Peifer, corporate sales manager for Hooper, remarked, "It was great to give these children the opportunity to learn about agriculture and what goes into producing the food that feeds them."

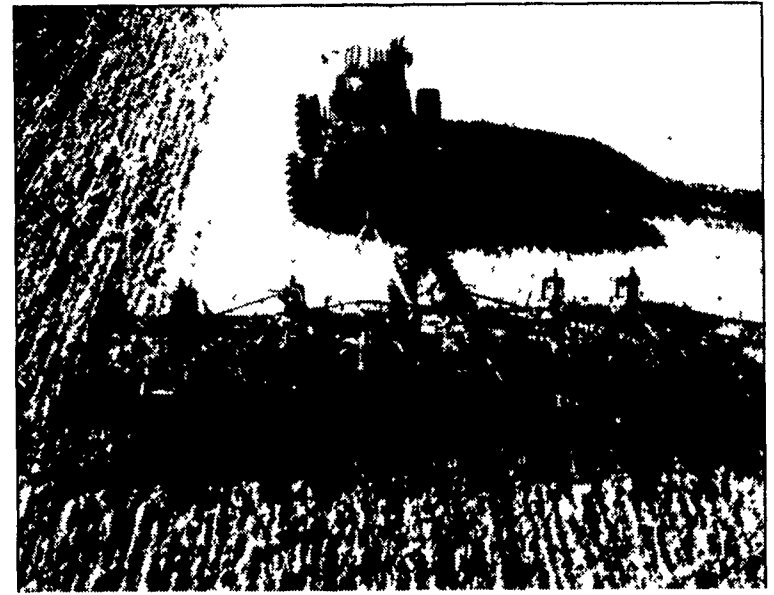
## Case IH PTX Series Chisel Plows Set Standard For Precision Tillage

RACINE, Wis. — Primary tillage requires both heavy-duty performance and accuracy, and Case IH PTX Series chisel plows deliver both.

From the heavy-duty tubular frame construction, to single-cylinder depth control, to high residue clearance, the Case IH PTX300 and PTX600 chisel plows are designed to maximize producers' productivity. The rigid-frame PTX300 offers working widths between 24 and 40 feet with 24 to 40 shanks on 12-inch spacings. The flexible-frame PTX600 ranges from 26 to 62 feet with shank spacings of either 9 or 12 inches.

"Our customers know that good yields begin with good soil management," says Jacky Payne, marketing training manager for Case IH seeders and chisel plows. "Case IH PTX Series chisel plows maintain uniform depth and excellent soil penetration to break up soil clods and flatten crop residue to guard against erosion."

In-field performance is assured with easy-to-set, single-cylinder depth control and parallel lift (PTX600), which ensures accurate, uniform depth across the full working width.



The Case IH PTX600 precision chisel plow handles tough conditions and heavy residue with ease, especially when accompanied by a Case IH STX Series Steiger tractor.

In addition, four-by-four-inch tubular frame construction with dual walking beams handles both tough tillage conditions and heavy residue with ease. Transport dependability is assured on five section models with heavy-duty hubs, 17.5 tires and 8-bolt wheels. In variable terrain, Case IH PTX600 precision chisel plows offer an added advantage of a flexible frame and a floating hitch.

"No one in the industry can

match the PTX600 chisel plow's land following ability," Payne says. "Front-to-back and side-to-side the PTX600 flexes to follow the variable contours of the land."

The precision performance of the PTX600 expands its versatility. Equipped with a Case IH manifold and air package, the PTX600 precision chisel plow can effectively be used for seeding and fertilizing applications.

## Land Pride



From City Parks to Sod Farms, Land Pride offers an All-Flex Mower to fit any job.

### ALL-FLEX MOWERS

Put a Land Pride All-Flex Mower behind your tractor and suddenly you have less work, and more gratifying results. That's because our All-Flex Mowers are built with all the Land Pride quality and reliability you've come to expect. And with four sizes to choose from, we have a model for nearly any grooming job.

#### Suggested Horsepower

11'	14'	16'	22'
MODEL	MODEL	MODEL	MODEL
30-55 HP	40-70 HP	45-70 HP	65-100 HP

### Pennsylvania

Detlan Equipment, Inc.  
141 East Main St  
Silverdale, PA 18962  
215-257-5177

Thomas L. Dunlap  
Rt 220, Main St Exit  
Jersey Shore, PA 17740  
570-398-1391

Eckroth Bros Farm Equip.  
Rd 2, Box 24A  
New Ringold, PA 17960  
570-943-2131

Eckroth Equipment Co.  
4910 Kernsville Rd  
Orefield, PA 18069  
610-366-2095



Hines Equipment  
RT 220, Belwood, PA  
814-742-8171

Keller Brothers  
R7 Box 405  
Lebanon, PA 17042  
717-949-6501  
and  
1950 Fruitville Pike  
Lancaster, PA 17601  
717-569-2500

Lehigh Ag Equipment, Inc.  
6670 Ruppsville Rd,  
Allentown, PA 18106  
610-398-2553  
800-779-3616

Pikeville Equipment Inc.  
RD 2, Oysterdale Road  
Oley, PA 19547  
610-927-6277

Stoltzfus Farm Service  
Cochranville, PA  
610-593-2407

Stouffer Bros Inc.  
1066 Lincoln Way West  
Chambersburg, PA 17201  
717-263-8424

Valley Ag Turf  
817 Tobias Road  
Halifax, PA 17032  
717-362-3132

New Jersey  
Rodio Tractor Sales  
North White Horse Pike  
Hammonont, NJ 08037  
609-561-0141

Warren County Service Center  
228 Route 94,  
Blairtown, NJ  
908-362-6916

BUY,  
SELL,  
TRADE  
OR  
RENT  
THROUGH  
THE  
CLASSIFIED  
ADS  
IN  
Lancaster  
Farming

PHONE:  
717-626-1164  
OR  
717-394-3047

FAX:  
717-733-6058



Mon., Tues.,  
Wed., Fri.  
8 AM to 5 PM  
Thurs.  
7 AM to 5 PM



## ErReR Hill Farms Hosts Fourth Annual Angus Bull and Female Sale

BOSWELL (Somerset Co.) — ErReR Hill Farms, a division of Riggs Industries, Inc., hosted its fourth annual Performance Tested Angus Bull and Commercial Female Sale on April 19.

Close to 100 people from Pennsylvania and surrounding states attended the auction that took place at the farm in Lincoln Township. Several of the bulls sold at the auction were headed for as far off as Kentucky.

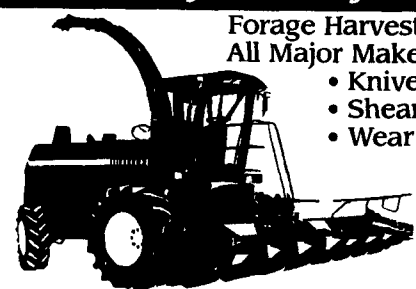
The auction, one of its only type in Somerset County, featured performance tested Angus bulls, cows, and commercial bred females.

The sale was auctioneered by Col. John Spiker of West Vir-

ginia, and by the end of the afternoon, 32 bulls, 15 heifers, and 12 cows and calves had been sold. The next event at the farm will be the Striving for Perfection Quality Female Production Sale on November 8.

ErReR Hill Farms, a well-known and respected breeder of Angus bulls, has been raising Angus cattle for over 40 years and currently has eleven bulls leased to AI stud cooperatives. The farm is owned and operated by Mr. and Mrs. Sidney W. Riggs. Their registered and accredited Angus herd of cattle currently consists of approximately 10 bulls, 170 cows, and 70 replacement heifers.

### Buy Factory Direct & Save!



Forage Harvester Replacement Parts For All Major Makes & Models

- Knives
- Shearbars
- Wear Parts

Prices Reduced On Over 400 Items!



To order toll free: 1-800-522-8874 • www.kooima.com • Rock Valley, IA

Call to receive our FREE 2003 Forage Harvester & Combine Catalog

