

1 FARM EQUIPMENT

NH 308 spreader, \$3,000.
NH 489 haybine & Athens
131 disc \$900 ea. (2) 12 ft
field cultivators & Grimm
tedder, \$600 ea.
717-776-7399

CIH 585 w/full factory
cab, heat & air, front hyd
angle blade, side mt, SB
mower, dual outlets,
55hp, dsl, super clean,
\$10,500. Del avail.
315-964-1161 8-6 please

2-110 White, cab/air, 20.8
fires, 3 remotes, \$13,500.
814-793-9319.

Wanted: Wood & brush
chipper, poor/fair cond or
no motor. 717-764-8337

JD 6620 Titan II sidehill
combine, very late ser #,
2700 org hrs, 1-owner,
shed kept & well main-
tained w/215 rigid head,
215 flex head on wagon,
643 corn head, low tin, oil
on wagon. 301-991-5312
Wash Co., MD No Sunday
calls

JD 2940 4wd. Gehl 7210
mixer wagon. 12ft Disc.
814-944-0818

Case baler 8530, good
cond. Model 950 Steffen
10 bale accumulator, like
new. 2R SP Sweet corn
harvester. 610-767-2409

JD 105 combine, 13ft
grain head, 6R corn head,
4R corn head, good work-
ing cond, \$1600. Antique
1950 JD B, ready to re-
store, \$1000. 215-536-8624,
215-801-5338

Antique tractors, Silver
King, \$3000. M&M Z,
\$3000. MH pony w/
cultivator, \$2500. IH 10-20,
\$3000. Show ready!
570-345-4882

'95 model 6640 Ford tractor,
4WD, 5700 hrs, \$7,200.
804-561-6420.

Farmall 766 w/new tires
& paint, \$9,000. Int 5300
18x7 DD grain drill w/
grass seed & packer
hitch, \$4,500. Farmall
Super C snow plow w/
chains, complete, \$500. JD
sickle mower setup for
fast hitch \$300. All equip
in exc cond. 570-204-6360.

Field Mower, Reese
2070W, drum mower,
used 2 years, \$1500.
717-528-4475

Cushman front line 0-turn
mower, 6ft deck, ex run-
ning cond, \$2200.
215-766-0242

Int'l 4R, S-tine cultivator
\$525; Noble 6R, S-tine
cultivator \$675; JD400
rotary hoe, 3pt, \$375.
610-916-3959.

3 hay wagons, JD running
gears, (2) 14', \$500/ea. (1)
16', \$900. 410-833-9188

1952 Farmall Super M,
Mfg Louisville, KY, SS#
500306, restored, new
tires, paint, wiring, etc,
WFE & fenders, \$5000
obo. 717-649-2493

SAME Buffalo 130, 125 +
hp, MFWD, good rubber
20.8x38, turbo, 4 post can-
opy, good solid tractor,
\$6900. 410-398-8766

Kverneland UN7655 large
square bale wrapper.
570-265-8801.

Farmall Super MTA dsl,
\$8,000/OBO; 10,000#
Flat/hill trailer \$4,000/
OBO. 610-285-6443
after 6 pm.

Ford 801 Powermaster,
40+ hp, front end loader,
2 buckets, new tires seat
battery, rear hyd., barn
kept, reg. maintenance,
runs great, asking \$3850.
610-678-3717

Alamo side mount flail
mower, hyd drive, G
cond, \$800. 717-532-4170

Int. 510 13 DD grain drill
w/grass seed, \$2675; NH
40' elevator w/motor,
\$1475; JD 24T baler
w/thrower, \$1475.
610-916-3959

Compact tractor parts,
Kubota, Ford, JD. Weav-
ers Repair 717/477-9332

JD 7810, FWD, Pwr Quad,
2141 hrs, 18.4x38 tires w/
10 bolt duals, front fend-
ers, 10 front wts, 3 hyd,
\$55,000, 856-455-3462.

JD 850 dsl, ROPS, canopy, 272
grooming mower, front wts, exc cond,
\$5,650 obo
(215) 968-1812



"First in Synthetic Lubricants"

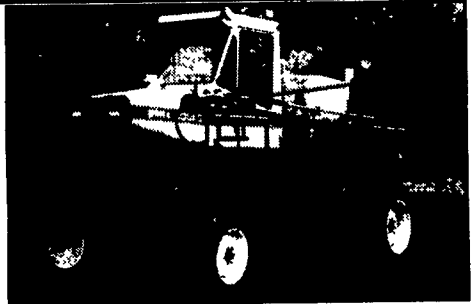
The most technically advanced engine protection money can buy
Full line of gas and diesel oils • gear oil • auto trans oil • hydraulic and hydraulic trans oil • compressor oil • greases

Chris R. Beiler Jr.
267 Hammertown Rd.
Narvon, Pa. 17555
717-445-8139

STOP • LOOK • LISTEN • Are you tired of those large maintenance bills associated with hydrostatic equipment? Check out GVM's complete line of mechanical drive equipment. Put money into your pocket, not into maintenance expenses.

Call the GVM hotline
at 866-677-4510

Visit our website at www.gvminc.com



Melroe 230 spray coupe,
55' fully hyd. boom.
\$12,900 OBO • 717/653-4830



92 CIH 7130 MFD
exe. cond., 3 rem. duals wts. 6000 hrs.
(717) 926-3645 or (717) 838-9043

Irrigation Equipment

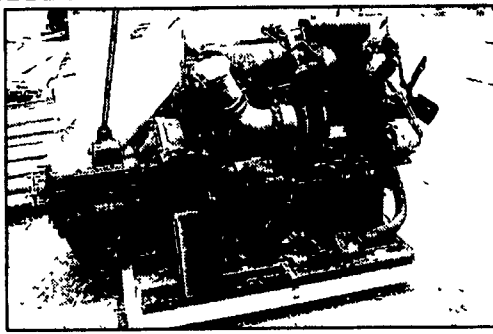
Ag-Rain Water-reel 40M squatter
4" x1320' hose Demo Call
Ag-Rain Water-reel T40A
4"x1320' hose used 1 season \$23,500
Ever Rain Water-reel
3.75"x? Hose as is \$3,000
Caprari D3/65 PTO new \$3,000
Race & Race 5" x 40'
Aluminum pipe/length \$55.00

Coleman Irrigation Sales & Service
129 Canhouse Rd. Elmer, NJ 08318
ph 856-358-4740 fax 856-358-0167

FARM EQUIPMENT FOR SALE and REMOVAL

- (1) 130 ft. traveling feeder with lot dividers. \$1,000.00
- (1) 60 ft. traveling feeder \$800.00
- (2) 45 ft. belt conveyor \$200.00 ea.
- (4) Miro fount (water fountains) \$100.00 ea.
- (1) Large Fertilizer, Herbicide Mix Tank.. Make Offer

Call Bill Ames at 717-838-8387



White 6 Cyl. Diesel w/Turbo, 5 Sp. Trans.,
Works Good. Uses Oil.
Aaron's Welding 717-529-0918

WANTED: Compact tractors for salvage or repair.

- 1993 N.H. 553 skidloader new tires, nice ... \$5,900
- Kubota B6100 2WD gear w/48" mower ... \$2,200
- Kubota G3200 diesel 44" deck low hrs \$1,500
- Case 1830 skidloader w/forks \$3,900
- Woods 4' bush hog like new \$600
- 48" heavy duty pallet forks \$495
- 66" buckets material and lo profile ... \$525 - \$500

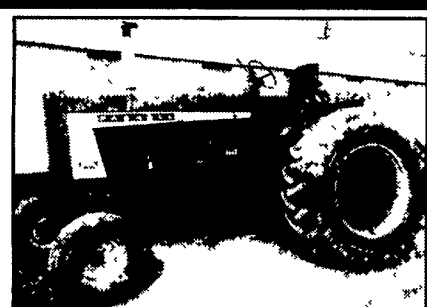
Parting out Kubota B 8200, 7200, 5100, 1700
Ford 1310, 1710, 1200 J.D. 855

Weavers Repair

9507 Forest Ridge Road, Shippensburg, PA 17257

717/477-9332

Complete Tractor Service on Anything Under 50 hp



- IH 806, TA, Dsl., 3 Pt. \$4,900**
 - Case 1030 Dsl. \$4,500
 - Int. 806 Dsl. TA \$4,900
 - IH 826 TA Rebuilt Motor \$5,500
 - IH 1066 Cab New TA \$7,000
 - IH 1586 Cab, TA \$7,800
- (717) 532-8926**

SMITH'S FARM EQUIPMENT LLC

30 Acker Road, Newport, Pa.

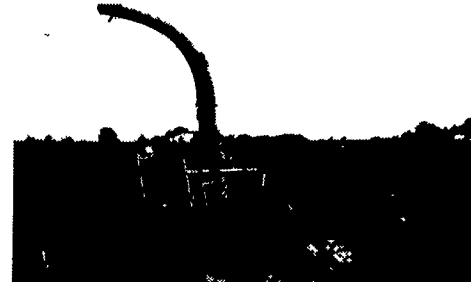
717-567-3562

- Ford TC28D, 4x4 w/Loader, only 26 hrs.
- Ford TC29 4x4 w/Loader, 700 hrs.
- Ford 951B Mower
- JD 4020D Cab
- JD F725/54 Deck
- IH 544 Cab, Gas Utility
- IH 656 Gas, w/2250 Ldr.
- IH 886 Cab
- IH 1086D w/Cab
- Case 5x Semi Mount Plow
- Claas Rollant 46
- Claas 250 Baler
- IH 2 MH Corn Picker
- JD AMT 600 Utility Vehicle
- NI 324 Corn Picker Wide Row
- NH 855 Round Baler
- NH 68 Baler w/57 Thrower
- Tanco Bale Wrapper
- JD 6800 Combine
- JD 2555 MFWD Tractor w/245 Ldr.
- IH 715D Combine
- Curtis 9' Quick Attach Snow Plow
- Hardy 500 Gal./Tandem/45' Eagle Boom
- 4-in-1 83" Skid Ldr. Bucket
- Steiner 410/16 HP

Good Used Mowers, Cub Cadets & Garden Tractors

CLAAS HARDI BUSH HOG

John Deere Harvesters



- JD 3970 Field Ready, Excellent ... \$5,500
- JD 3960 w/Table \$4,900
- JD 3950 w/Table \$4,900
- JD 3940 w/Table \$4,200

Lots of New & Used Parts
Tables for New Holland 892 Harvesters

New style fan paddles that improve blowing.

SCHULZ MANUFACTURING

2210 Creek Hill Rd., Lancaster, PA 17601

(717) 397-1051

R & W EQUIPMENT CO.

35 E. Willow St., Carlisle, PA 17013
(717) 243-2686
(717) 243-0244 FAX

TRACTORS

MF165 w/Loader
1986 Ford 7700 Dual Power
IH Cub & Attachments
MF35 Very Gd Cond

BALERS

NH 853 Round Baler wide pickup
Vermeer 504H
NH 575 Baler w/Thrower
NH 575 Baler & Hoelsher
Accumulator

SKID STEER LOADERS

NH LS180 Cab Heater & Def
NH LX565
94 Bobcat 7753
L785 NH
B124 Backhoe

FORAGE

NH 8 Forage Wagon

MISCELLANEOUS

Richardton Dump Wagon
5' Woods M5 Rotary Mwr
5' Bushhog Rotary Mwr
6' Woods Pull Type Rotary Mwr
6 Arps 3 pt Blade
30 KW Surge PTO Generator

HAY TOOLS

2000 NH 1431 Discbine
1996 NH 499 Good Cond
2000 NH 255 Rake Tedder
99 JF 3 pt Rotary Rake

LOW RATE FINANCING AVAILABLE
Call Tom For New Equipment

Jonestown Ag Repair & Supply Store

170 Old Rt 22, Jonestown, PA 17038

Darvin Weaver

717-865-0135 fax 717-865-0322



- NH L785 skid loader \$9,000
- Bobcat 873 skid loader, low hrs \$16,000

Mystik Lubricants * Roller chains

* Custom made hydraulic hoses

* Napa Belts & Filters

* Hardware Skid loader attachments available

* Galaxy Skid loader ties & other brands

Complete Skid Loader Repairs Our Specialty

Our store replaces Skirksville Farm Supply

"Cream of the Crop" Used Equipment Sale

All Well Maintained, Shed Stored, Single Owner Equipment

- Gehl 1075 Forage Harvester with Haylage, 3 Row Corn and 2 Row Snapping Heads - only used 2 years \$25,000
- 2 H&S HD 7+4 Forage Wagons - only used 1 or 2 years \$8,000 each
- Dion 1016SE Forage Wagon \$5,000
- Gehl 1540 Vortex Forage Blower \$2,000
- Ag Chem 502 Tandem Axle Sprayer \$5,000
- Great Plains Solid Stand 10 Foot No Till Drill \$10,000
- John Deere 6500 Forage Blower \$500
- KOOLS KB-200R Forage Blower with Intake Auger \$500
- Also Silo Unloaders - You Remove
- Patz 20' \$500
- Hanson 20' - Needs Some Work \$500
- 2 Hanson 16' - 1 nearly new \$3,000, other \$1,000
- Hanson 12' - Emptied silo once \$3,000
- Van Dale 12' \$500
- 5 Round Corn Cribs \$100 each

York County, PA Cell # 717/577-6400,
Office 717/741-8395 Home 717/428-3526

Country Powerwashing & Equipment

We offer a full line of:

• Pressure Washers - new & used

• Parts • Accessories



717-765-9478

1-800-598-0680

12 ANN ST

Marysville, PA 17237

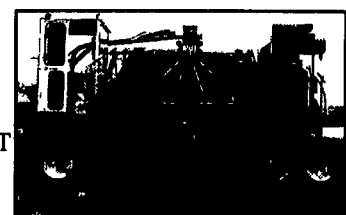
AG-BAG INTERNATIONAL LTD

New & Rental Machine Sale

USED

- 24 - G6008-8'
- 1 - G6008/6-8/6'
- 4 - G6009-9'
- 1 - G6070-10/9'
- 1/2 - G7010-10' DT
- 1 - MB7010-10'

These are all in good condition. We have new models in stock! Give us a CALL!



MH9512 - 12' 250 HP, 3 Yrs. Old, 1553 Hrs, 4WD, Cab Air Conditioning, Tunnel Ext., Tunnel Cleanout, Hyd. Bag Boom, Gandy, Electric Winch, New Rotor



Agri-Service LLC

Rental & Custom Services

14137 Pennsylvania Ave - Hagerstown, MD 21742

(301) 665-9333 or TOLL FREE (877) 412-4224