

Public Auction Register

Closing Date Monday 5:00 P.M.
of each week's publication

Internet Sale Register will be updated
by Friday at 12 Noon

ATTENTION AUCTIONEERS

All sales register info needs complete address,
street, town, county & state.

WED JUN 25 - 7PM Public
Auction - Lykens Valley Farm
80+/- acres Lee D Dockey
Auct Service 570-758-6004

WED, JUNE 25 - 7PM Real
Estate auct at 266 Wolfcreek
Rd, Bernville, PA, by David
Loeb Auct 610-756-4260

PUBLIC AUCTION

5.5+/- AC. Farmette

2 1/2 Story Stone/Stucco Farmhouse & Barn
Thursday, June 26, 2003 @ 7:00 PM

511 Township Line Road, Elverson, PA

From the intersection of Rt 23 & Rt 82 in Elverson take Rt 82 South
approximately 3 miles, turn right on Chestnut Tree Rd, right on
White School Rd to property on right West Nantmeal Twp Chester
Co Twin Valley School District



2 1/2 Sty Stone/Stucco Home Circa 1800's. 1st Floor
has living/Dining rm combination w/fireplace, built in bookshelf,
kitchen has walk-in FP w/woodstove, dishwasher, wall oven,
countertop range, refrigerator, powder rm, sm storage area, enclosed
side porch contains laundry rm with W/D hook up & sm heated rm.
2nd Floor has 3 bedrooms, full bath, attic storage, 2 stairways. HW
floors and deep window sills thruout Front & side porches, partial
basement, concrete flr, oil hot air heat, on-site septic & well
Frame Barn: 26 x 50 has 3 horse stalls, drive in bay and storage area,
upper level hay storage, attached 1 car garage & equipment shed
4 paddocks, frost free hook-up Storage/potting shed

Note All level, open land, approximately 3 acres in fenced pasture,
flowering trees and shrubbery, beautiful view of Strubble Lake

Open House: Saturday, May 24th & 31st from 1-3 PM or
anytime by appointment call

Auctioneers at 610 286 5183

Terms: 10% down day of sale, settlement within 60 days
Terms By: Lezlie E. Vinaccia



Alvin & Elton Horning • Merle Eberly 2417-L
C Ivan Stoltzfus 3920-L

P.O. Box 251 Morgantown, PA 19543 (610) 286-5183
www.horningfarmagency.com

THURS, JUNE 26 - Lg gun
auct by Shaffner Auct Co
AU 2897-L 717-492-0004

THURS, FRI, SAT, APR
26-28 - 8AM-5PM Int
Harvester or agriculture items at
Bloomsburg Fair Grounds,
PA, by Larry Kerns
717-532-9643

THURS JUNE 26 - 7 PM Lo-
cated at 511 Township Line
Road, Elverson, PA 2 1/2 Sty
Stone/Stucco Home 1800's
Frame barn 3 acres fenced
pasture Horning Farm Agen-
cy, P O Box 251, Morgan-
town, PA (610) 286-5183
Merle Eberly 2417-L

THURS JUNE 26 - 7PM Real
Estate Auction of estate of
Catherine M Stricker, 1650
Stricker Lane, Dauphin, PA,
Auct Lee D Dockey, AU--
229-L, 570-758-6004

THURS JUNE 26 - 7PM 1
acre real estate in Chester
County, from Honey Brook,
10 S to Beaverdam Rd, left
to sale on left, by Mel Ho-
over, AU-003111-L,
717-354-8397, 717-354-6431

FRI & SAT, JUNE 27 & 27 -
10AM Utility trks & equip,
pass vehicles, trks, const &
farm machinery 1450 New
York Ave, Wilmington, DE
302-573-5005 Nationwide
Auct Sys

FRI, JUNE 27 - 10AM GSA
Sale at York Springs Auto
Auct., York Springs, Pa
1-800-222-2038

FRI JUN 27 - 1PM State
Graded Feeder Pig Sales
Carlisle Livestock Market,
Inc. 548 Alexander Spring
Rd, Carlisle Market phone
717-249-4511, Buyer's
phone. 717-249-0396, Fax
717-249-5507, Jim DeGaeta-
no - Home 717-249-2359

SAT, JUNE 28 - Real Estate,
H H goods, antiques for
Maggie S Burkholder, 248
Cider Mill Rd, Ephrata, PA
Martin's Auct AU-1078

SAT JUNE 28 - 8:30AM 11th
Annual Benefit Auction
Horses, Carriages, Tack,
Farm Equip, Reistville, PA,
Lebanon Produce Auction S
of Myerstown

SAT JUNE 28 - 8:30AM 7th
Annual Refton Community

Fire Co, 99 Church St, Ref-
ton, PA, 717-768-3239

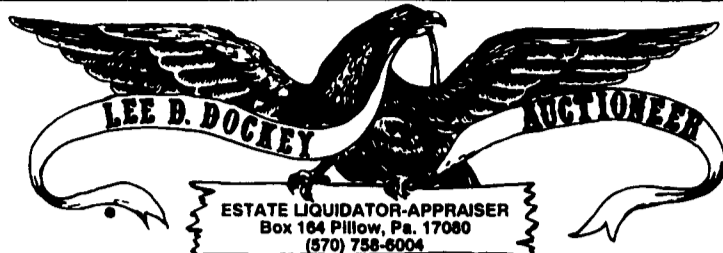
SAT JUNE 28 - 9AM Furn,
HH Items, Collectibles, L&G
Items, Auct Ken Keeny,
AU2797LL, 717-993-3448

SAT, JUNE 28 - 12 NOON
Real estate & vehicles auct
at Avoca, Steuben Co, NY,
by Pirrung Auct
585-728-2520

JULY
TUES, JULY 1 - 6.30PM

Commercial Real Estate,
Town of Willing (Allegany
Co.), New York at York's Cor-
ners, by Pirrung Auct
585-728-2520

WED JULY 2 - Lumber &
bldg supplies by Wolgemuth
Auct Dennis Wolgemuth
#2357, 717-656-2947, fax
717-656-6011, http://
www.wolgemuth-auc-
tion.com, email wolgemuth-
auct@juno.com



PUBLIC AUCTION OF REAL ESTATE

ESTATE OF CATHERINE M. STRICKER
THURSDAY JUNE 26, 2003 7:00 P.M.

27-ACRES (+/-)

LOCATION: 1650 Stricker Lane, Dauphin, PA. - Along Clark's Valley
Road (Rt. 325), 1 Mile East of Rt. 225, Turn onto Stricker Lane. Watch for
auction signs.

2-1/2 STORY FRAME HOME W/ALUM.SIDING known as 1650
Stricker Lane, Middle Paxton Township, Dauphin County situate on
27-ACRES (+/-) - 1st Floor has KITCHEN W/DINING AREA, DOUBLE
LIVING ROOM & ENCLOSED BACK PORCH - 2nd Floor has 4
BEDROOMS & BATHROOM - CEMENTED BASEMENT W/LAUNDRY
AREA & SHOWER - WEIL-MCLAIN HOT WATER OIL HEAT ~
1-1/2 STORY BLOCK CONSTRUCTED 2-CAR GARAGE. For additional
information or inspection, phone 570-758-6004.

TERMS: 10% Down. Further terms and conditions to be given when
real estate is offered at 7:00 P.M.

Allen Shaffer, Esquire
Shaffer & Engle Law Offices

Linda Stricker, Co-Executor
Ronald E. Stricker, Co-Executor

Lee D. Dockey Auction Service #AU229L (570-758-6004)

Yvonne Dockey-Romberger #AU1683L R.R. Romberger #AU4051

Birth Care and Family Health Services

11th Annual

BENEFIT AUCTION

Saturday June 7, 2003

Hoffman Building, Rte 472, Quarryville, Pa.

Free donuts and coffee at 8:00-8:30 am.

Auction begins at 8:30 am.

Lg Cherry China & Corner Cabinets; Upright Everett Piano; Oak
Curio Cabinet; Oak Armoire, secretary desk, corner hutch, drop
leaf coffee table. Cherry King-size Mission Bed. Rustic Rail King-
size Bed. Easy chair. Pine Furniture. Folding chairs. Whirlpool
Front-load Duet WASH MACHINE by Martin's Appliances. Area
rugs. Crafts. Longaberger basket. Winross trucks, Toys. AMISH
QUILTS: Queen Size Wedding Ring; Queen Size Log Cabin Cor-
nerstone; Queen Size Center Diamond Amish Colors; Queen Size
Lone Star & Queen Log Cabin. Crib quilt, Wallhangings. ART:
Susie Riehl original remaque by Wenger's Gallery. Doris Hough
original Prints by Frieman Stoltzfus, Suk Shuglie, Bruce Coyle,
Elsie Beiler, Carol Herr. Housewares. Gift baskets Amish canned
and baked goods. Speeder Wagon. Ice cream freezer. Lawn furni-
ture, picnic table. Trampoline. Walk-in Shed 8'x10'. Candyland
Playhouse 6'x8'. Shed 8'x12', Swing Set 12'x20' w/rail gym. Model
25 Manure Spreader. Dewalt Power Drill & Jigsaw, Tools Riding
Lawn Mowers -Toro & MTD PLANTS. GIFT CERTIFICATES.
New items daily!

To Donate Call: 717-786-4010 or 786-5506.

Email: birthcare@davidreed.com.

See selected items on website: www.davidreed.com

Birth Care is a non-profit Midwifery Birth and Women's Center.
Funds we raise enable keep health care costs affordable for low
income, uninsured families & assist crisis pregnancies.

Auctioneer License # AU-3407-L



2 DAY PUBLIC AUCTION OF VALUABLE REAL ESTATE

Household Goods, Antiques,
Quilts, Lawn & Garden
Supplies, Tools, etc.

Fri., June 20, 2003 at 9:00 a.m.

Sat., June 21, 2003 at 9:00 a.m.

Real Estate - Sat. at 2:00 p.m.



Zoned MDR-2 Acres M/L

Located in borough of Mount Joy at 350 South
Market Ave., Lanc. Co., PA. Turn off Rt. 230
(Main St.) in west end of Mount Joy. Turn south
on Angle St., go over bridge, turn right to sale.

Turn of the Century 2-1/2 Story Brick
Dwelling w/storm windows & doors, slate roof.
Kitchen w/pantry, mudroom, dining room w/closet,
living & family rooms, foyer, full bath w/laun-
dry hookup & cabinets. Second floor w/6 bed-
rooms, closets, full bath w/walk-in closet, 2 stair-
ways. Full basement, concrete & dirt floor, out-
side entrance, furnace room, oil fired hot water
heat w/cast iron radiators, elect. water heater,
town water & sewer. 36'x46' brick & frame
garage & workspace. 15'x24' chicken house,
20'x100' garage & chicken house w/elect. Open
for inspection Sat., May 31 & June 7, 2003 from
2:00 till 4:00 p.m. or for appointment call 717-
533-4405. 10% down day of sale, balance on or
before Aug. 5, 2003. For plot plan send self-
addressed stamped envelope to: Robert E. Martin,
429 E. Main Street, Leola, PA 17540.

Terms by: Dora H. Heisey

Auctioneers:

Robert E., Jeffrey R. & Michael L. Martin,

717-656-7770

Lunch Available

AU000580L

No Out-Of-State Checks

Randall L. Ranck

Atty. Melvin Newcomer

www.remartinauctions.com



Woodworking Equipment & Shop Tools, Lumber WED., JUNE 4, 2003

Directions: From Quarryville take 222 North
approx. 5 miles to Krantz Mill Rd. turn left to
sale on left or from Refton take 222 South to
Krantz Mill Rd. turn right to sale on left!

Woodworking Equipment

Shaper with air motor, Makita cut off saw with
air motor, 12 in. Craftsman band saw with air
motor, 12 in Powermatic Planer with hydraulic
motor, 6 in. Rockwell jointer with hydraulic
motor, 10 in. Rockwell Unisaw with hydraulic
motor, Ridgid pipe treader & Ridgid pipe cutter,
F2L912 - 2 cylinder Duetz engine, 5 HP Quincy
air compressor, drill press with air motor, Dewalt
740 radial arm saw with air motor, Sioux air drill,
air router, Bosh air jig saw, 2 air orbital sander,
2 - pad air sanders, Blue Dart air grinder, Stanley
Plane, Senco nailer, Senco stapler, anvil, 3 carri-
er carriage carts

Misc. Lumber

1 x 3; 1 x 4; 1 x 6; 1 x 8; 1 x 10; 1 x 12, 6 ft. to
16 ft poplar & oak lumber, lots of misc. lumber!

Horse Related Items

Open front carriage - good condition,

Misc. Items

D.S. Wood & coal stove - good condition, 2 - L.P.
lights with 20 lb. tanks, coal bucket, 4 ft.
Exagone picnic table, misc. shop tables, bolts,
screws, lots of misc. hand tools, lots of misc. pipe
clamps 18 in. to 60 in., C clamps, Handyman
jack, 3 - bolt cutters, drill bits, tobacco shears,
barrel pump, vise, platform scale, shelving, log
sled, misc. old windows, 12 volt battery, 20 ft.
wooden extension ladder, scythe, wood chest,
rebounder, milk cans, skillet, butcher furnace,
cast iron kettle, meat grinder, sausage stuffer, pea
wire, old bird house, wash line reels

Many, Many more items

too numerous to mention!

Terms by: Suvilla B. King

Deceased Amos K. King

122 Krantz Mill Road

New Providence, PA 17560

Cash or Honorable PA Check Only

All Announcements Sale Day Take

Precedence Over All Advertising.

Not Responsible for Accidents

Auctioneer: Mel Hoover

AU-003111-L

717-354-8397 Home or 717-354-6431 Barn



PUBLIC AUCTION

OF VALUABLE REAL ESTATE,
HOUSEHOLD GOODS, ANTIQUES,
FOUR WHEELER & CARS

SAT., JUNE 14, 2003

Sale at 9:00 A.M., Real Estate at 1:00 P.M.

Four Wheeler & Cars at 12:00 P.M.



3/4 ACRE M/L WOODED LOT, DEAD-END STREET

Located at 132 Maple
Dr., New Holland, Earl
Twp., Lanc. Co., PA.
Two miles south of New
Holland, turn off Rt. 23
in New Holland on
Brimmer Ave. Turn right
on Maple Dr. to sale,
dead-end street, Garden
Spot School District.

Swiss Chalet Type Dwelling w/2 car garage in basement level w/electric
door openers. Kitchen w/built-in Quality Cabinets, large pantry cupboard,
electric stove, dishwasher, garbage disposal, Kitchen Aid trash compactor,
eating area w/built-in desk & cupboard, ceiling fan, dining room w/entry to
wooden deck, living room, foyer w/closet, 3 bedrooms, master bedroom w/2
double closets, full bath, one bedroom w/walk-in closet, full bath.
Basement, paneled family room w/brick fireplace, double closet, wall to wall
carpet, bedroom, 1/2 bath, laundry w/laundry shoot, entry to garage, window
treatments stay. Oil fired hot air heat, air conditioner & humidifier all one
unit, central vac. 10'x10' storage shed, underground electric, heated blacktop
driveway, nice neighborhood. Well w/pressure system, public sewer. Open
for inspection Sat., May 24 & 31 or for appointment call 717-354-0163. 10%
down day of sale, balance on or before Aug. 14, 2003.

ATTN: FURNITURE SOLD FIRST AT 9:00 A.M.

Matching Sofa & Love Seat; End & Coffee Table w/Blue Glass Top; Robler
& Campbell Spinnet Piano & Bench; Knee-hole Desk; Chest of Drawers; 4
Captain Chairs; 4 Bar Stools; Chrome Tables; Lawn Furniture; Picnic Table
& Benches; Frigidaire Refrigerator; Viking & Dial & Sew Sewing Machines;
2 Mantel Clocks; Magnavox Console TV; Electric Heater; Lamps; Pictures;
Mirror; Decorative Items; Bedding & Linens; Stair Chair Lift; One & One
Trainer Exercise Bike.

GLASSWARE: Depression; Pressed; Flota Gold; Candlewick; Glass
Basket; Fruit Dish; Frosted Glass; Haviland Bavaria Dinner Sets Service for
12 & 8 w/extra pieces; Blue Qt. Jars; 1 Gal. Milk Kettle; Spoon Rack;
Dorling Flatware w/Chest Service for 12; Elvis Presley Plates & Steins; 2
Sets of Elvis Cards; Pewter Miniature Machinery from New Holland
Machine Co., N.H. Bank; Toys; Winross Trucks.

LAWN SUPPLIES: Troy-Bilt Chipper/Shredder w/Leaf Vac.; Weed Eater;
Leaf Blower; Garden Hose Reel; 20' Alum. Ext. Ladder.

CARS: 1995 Ford Crown Victoria LX V8 Fully Equipped, 4 Door, 61,000
miles, one owner, garage kept (Maroon); 1997 Ford Escort LX Fully
Equipped 4 Cyl., 54,000 miles, one owner, 4 door (Mint Green); 1994
Yamaha 350 Warrior Four Wheeler, and many other items too numerous to
mention.

Terms by: Elizabeth S. Felpel
T. Lewis Felpel (deceased)

Aucts

Robert E., Jeffrey R. & Michael L. Martin, 717-656-7770

AU000580L

Randall L. Ranck

James Weaver, Atty

Lunch Available

No Out-of-State Checks

www.remartinauctions.com