

Public Auction Register

Closing Date **Monday 5:00 P.M.**
of each week's publication

Internet Sale Register will be updated
by Friday at 12 Noon

ATTENTION AUCTIONEERS

All sales register info needs complete address,
street, town, county & state.

SAT, MAY 31 - 9AM H.H. gds., tools, antiques for C L & M Kauffman, 19-A N Belmont Rd., Paradise, PA, by Mel Hoover AU-003111-L 717-354-6431

SAT MAY 31 - 9AM Household goods, antiques at 104 Highview Dr., Cochranville, Chester Co, PA, furn, appliances, kitchen/glassware, guns, tools, misc by Leon D. Kurtz AU000522-L, 610-593-5387

SAT, MAY 31 - 9AM Al Jamison Masonry Estate Auct in Juniata Co by Bryan D Imes

& Sons AU-001656-L 717-527-2449

SAT MAY 31 - 9AM Tools & Power Equip., 93 East Main St., Mount Joy, PA, Auct Mark Diffenderfer, 717-413-6239

SAT, MAY 31 - 9AM Real estate 50 acs, 2-sty framed house, tractors, implements, tools, guns, radio equip, boats, antiques, misc. at 195 Burnhill, Shermans Dale, PA, by Fahnestock's Auction Svc AU2553-L 717-582-8565

SAT, MAY 31 - 9AM 240 Spruce St., Williamstown An-

tiques, tools, misc. Linn Lenker, Auct 717-362-3537

SAT, MAY 31 - 9AM Consignment auction, tractors, parts, equipment, engines, Penns Cave grounds Rt. 192 E. of Centre Hall, PA, Aucts. Ronald J. & Ronald S. Gilligan AU339L & AU340L, 814-692-8738

SAT MAY 31 - 9:30AM Personal prop, antiques, wood-working equip., 598 Speedwell Forge, Rd, Lititz, Lancaster Co, PA, Landis Auction Service, 717-898-9621

SAT MAY 31 - 10AM Hardwood flooring public auction at Rte 14 Troy, Bradford Co., PA, inventory clearance, by Randy Jelliff Auct. Serv. 1548-L, 570-835-4214

SAT, MAY 31 - 10AM Horning Chair Shop 25 sty brck 5 bdrm dwl, woodworking shop, acre lot, equip, furn, pers prop at 125-127 Martindale Rd., Ephrata, by Kline,

Kreider & Good, #499, #2116, #3433, 717-733-1006

SAT, MAY 31 - 10AM County, prosecutor, municipality, private vehicles. Located at Allen's Auction Barn, Vincetown, NJ Auct Rick Allen, 609-267-8382

SAT, MAY 31 - 10AM Major equip liquidation auct for EE Root & Sons, Inc., of excavation, utility & under ground pipeline equip., support equip, trucks & trailers, at Owego, NY, by Petrowsky Auct 860-642-4200

SAT MAY 31 - 11AM Real Estate, 273 Paradise Lane, Julian, PA, Auct Col K R Miller, AU-000613-L, 814-944-1873

SAT, MAY 31 - 11AM Conant Acres/Dingo holsteins production sale in Intercourse, PA, by Cattle Exchange AU--002463-L 607-746-2226

SAT MAY 31 - 11AM Monthly Horse Sale, work, driving, riding horses, 3 mi east of Middleburg, PA on Rt. 522, 570-837-2222.

JUNE

SUN JUNE 1, 12:30PM Home on 2 acres near Lake Raystown, real estate 2PM, 1 story ranch, by Gilligan #AU339-L, 814-237-0189.

MON., JUNE 2 - 9:30AM Restaurant equip for Pentz Grill & Grocery, Renovo, PA, by Ron J & Ron S Gilligan AU339-L & AU3430-L 570-923-0599

MON. JUNE 2 - 12 NOON Cadet tractor, Lawnboy & Other mowers, tools, household & collectibles at Murray Auction Emponum, 23 N. Water St., Lititz. Elmer Murray Auctions, Inc

COMPLETE AUCTIONEERING SERVICE

PUBLIC AUCTION

Monday, June 9, 2003 @ 10:00am
Selling real estate & restaurant equipment
at the former Chris's Pizza, Liverpool PA

DIRECTIONS: From Harrisburg take Rts 11 & 15 north. Travel just past Liverpool, auction will be on the left. Signs posted.

REAL ESTATE

30' x 82' single story building which was formerly a pizza shop with seating for 32. Property can be accessed by Rts 11 & 15 both north & south bound with a daily traffic count of 30,000. The building includes a kitchen, prep area, dining room, 2 party rooms or 1 storage room, & 2 bathrooms. Extras included a paved drive & parking area and a 200 amp service. Call for a showing.

TERMS: 10% down, balance in 45 days. Real estate offered at 10:00 am

RESTAURANT EQUIPMENT

Asul 80A, 1.5hp 3 phase 60 Qt mixer; Hobart 1hp, 3 phase, Model 600, 60 qt mixer; 2 door stainless steel upright freezer by Foster, Needs compressor, 5' gas stove w/24" grill, 4 burners, Hot top & 2 ovens; 3 phase converter; Omni equipment Ansil system & hood, 8'; (2) automatic Hobart slicers; Globe model Geiz slicer, Bariomatic Md 812-V slicer; Beverage Bay Marie; 6' stainless steel bar w/work surface, 3 doors; Univex stainless steel grinder, 2'; gas grill; Busing stands; (10) stainless steel tables including, 8' w/17" back splash, (2) 6', (3) 5', (2) 4', (1) 2', (1) 45"; 4 twin bari gas pizza ovens; Steam table; Round up hot dog maker; Sandwich ovens; Delfield 4' deli case; 5' x 6' & 3' stained glass pictures by Federino; U.S. Berkel cheese grater; (60) stacking chairs; (30) vinyl chairs; (8) Polymer tables w/4 attached seats; (12) Formica top tables w/oak trim including: (10) 3'x3', (1) 2.5' x 2.5', (1) 2' x 5'; (8) Formica tables including (6) 2.5' x 4' (2) 2.5' x 2.5'; Kids booster seat; 36" x 24" grill w/thermostat; 8' salad bar; Hobart slicer; Sm. electric fryer; Unitrex cash register classic R130A; Twin basket deep fryer; Heat lamps; Lots of pizza pans; Stainless steel stock pots, trays, & tools; (25) aluminum trays, 18"x25"; Microwaves; 75" 3 bay stainless steel sink w/back-splash; 57" 3 bay stainless steel sink w/back-splash; 2 bowl stainless steel sink; Knock down walk-in cooler; Hot bags for pizza; 50 gal. hot water heater; Sm. upright freezer; Sm. upright refrigerator, sugar, salt, pepper, & cheese shakers; Large rolling pin; Utensil trays; 4' x 6' lighted 7up sign; Stainless steel colanders; Vinyl mop bucket; Elec. open sign; Coke cups; Dough pans; Splash guards; Dinnerware; Glasses; Coffee cups; Flatware; Step ladders;

www.hassingercourtney.com

KENNETH E. HASSINGER
RR 02, Box 985
McClure, PA 17841
(570) 658-3536
AU-001532-L



NEIL A. COURTNEY
R.D. #1 Box 239
Richfield, PA 17086
(570) 539-8791
AU-002651-L

LARGE UNUSUAL PUBLIC AUCTION!

ABSOLUTE REAL ESTATE, ANTIQUES, COLLECTIBLES, ARTISTIC BRIC-A-BRAC, ANTIQUE CARS, TRACTORS, ETC. OF MRS. S. PAULINE THOMAS, AND OF HER LATE HUSBAND, DON ABBOTT THOMAS, FORMER ARTIST AND TEACHER OF NOTE IN PENNSYLVANIA, AND FOR 32 YEARS AT

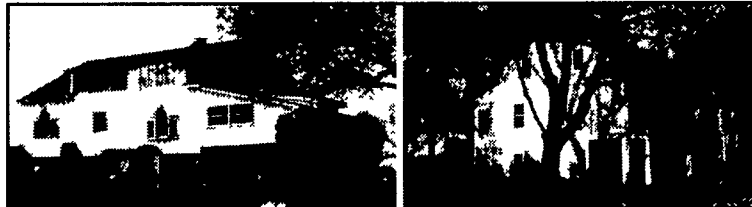
DALLASTOWN HIGH SCHOOL.

MANY ITEMS WILL BE UNDER A TENT

YOU MUST COME AND TAKE A LOOK.

SATURDAY, JUNE 21, 2003 8:00 A.M.

On the premises at 1100 S. Pleasant Ave., Dallastown, York County, PA. From PA Rt. 74, E. Main St. in Dallastown, turn south and follow S. Pleasant Ave. to auction site on right.



ABSOLUTE REAL ESTATE: 5 Acres, +/- on both sides of S. Pleasant Ave., with a Civil War vintage brick dwelling and a unique split level Studio Barn with 14 rooms, some of which are studios, on 7 levels. To be auctioned to the highest bidder without minimum or reserve. The dwelling has kitchen, large dining room, parlor and bath on first floor. There are three bedrooms and half bath on the second floor. There is a walk-in basement room and cold cellar at ground level. A large pleasant brick patio off the back porch provides another area for entertaining or relaxing at the rear of house under the shade trees, and a wide brick walk leads out to the Studio Barn. There is a detached summer house/butcher house with butcher stove. There is an underground root cellar adjacent to the dwelling in the east lawn. There is also a 12 X 24 ft. hothouse. The location, the panoramic vistas, the many potential uses for the property can only be appreciated by a visit to the property. A color brochure is available. 717-741-4489.

Inspect: Inspection of the property by appointment only, as an escorted tour is required. For appointment, Phone: 717-244-5956.

Terms: A non-refundable down payment of 10% of the gavel price is required on day of auction in guaranteed funds. Checks must be accompanied by a bank letter guaranteeing funds for this auction on this date. The balance is due on or before August 21, 2003 at final settlement.

MRS. S. PAULINE THOMAS, OWNER
MRS. DEBBIE S. THOMAS, P.O.A.
EVELER & EVELER, ATTORNEYS

Red Lion, PA
Ph. 717-244-0295



York, PA
Ph. 717-741-4489

Lic. Nos. 820 & 821

Photos and info on our website: www.sechristauctions.com

Refreshments will be available.

Antiques Center

Antiques Center



IMPORTANT 2-DAY PUBLIC AUCTION OF VALUABLE

FURNITURE; CHINA & GLASSWARE; ANTIQUES; POSTCARDS; ADV. ITEMS; 1991 LINCOLN CONTINENTAL

SAT., JUNE 14, 2003

AUCTION TIME: 9:00 A.M.

LOCATION: 110 School Road, Bethel, PA. From Rte. 501 in Bethel turn west on School Road. Follow School Road west 3/10 mile to farm on left. Approx. 1/2 mile south of Interstate 78. Check http://mywebpages.comcast.net/ReedEstate for pictures and descriptions of sale items.

Auctioneer note: Lena's doll collection auction (approx. 1,000) being planned for Fall 2003.

Auction for: Lena E. Reed Estate
Frank Reed Exec., Jason Reed Exec.
David Reed Exec.

Auction conducted by:

John D. Stauffer, Auctioneers
John-AU-1509-L John Jr. AA-1887-L
Phone: 717-665-5099 Manheim, PA
Food at Auction

Outstanding Public Auction

Valuable Toys, Winross Trucks, Farm Toys, and Cast Iron Dogs
Sat. June 14th 2003

8:30 AM

Brickerville Fire Hall
North of 322 on Hopeland Rd.
One mile East of Rt 501

Lanc. Co. PA Watch for signs.

50+ pieces of Hubley including: 14 Hubley planes (7 in original boxes), 14+ pieces of Arcade including: a 6pc Oliver 70 Row Crop set with corn picker, horse drawn manure spreader, horse drawn wagon, horse drawn threshing machine, and a Ford tractor. 160+ Farm tractors 25 Cast Iron Dogs 6Pc. Steff train set. Over 1,000 lots. 350+ Winross trucks many early including: Myer's Metered Gas, Florin Feeds, E.K. Bare, CAT, Goodyear, Nabisco Chuckles. All trucks cataloged, please check website for complete list. **Auctioneers notes:** Outstanding one person collection; toys in extremely nice condition. Food stand at auction. Doors open at 7 AM. No buyers premium.

Sale for

Harold and Nancy Diffenderfer
PLEASE CHECK OUR WEB SITE FOR MANY PICTURES, AND OTHER UPCOMING AUCTIONS
@ www.ClassicEdgeAuction.com

Auctioneers:

The Classic Edge Auction Company
1986 Oak Lane
Manheim, PA 17545 665-1668
www.ClassicEdgeAuction.com
Ryan L. Groff LIC#AY000286
Nevin Rentzel John Rutt III



PUBLIC COIN AUCTION

-JMI COINS-

Selling 400+ Lots of Collector and Investment Quality Coins
Half Cents thru Gold
Raw and Certified

Saturday, June 14, 2003

At the Holiday Inn

Arsenal Rd. in York PA.

Preview 7:45 AM

Sale begins at 9:30 AM

Directions: PA Rt. 83 Southbound take Exit 21, Northbound use Exit 21A (Rt. 30 East, Arsenal Rd.) Right at first light. Hotel is on the left.

Highlights: 23 Half Cents incl. 1794, 1795, 1806 Small 6 w/Stems, 1808/7, 1809/6. 60+ Large Cents plus 2 Feuchtwanger Cents. 1955 and 1995 Double Dies. 1912s Liberty Nickel. 1916d, 1921 Mercury Dimes. 1875s Twenty Cent NGC AU58. 17 Bust Halves. 25+ Commemoratives incl. 2 Isabella Quarters (PCI AU58 and NGC MS63). 1872 Seated Dollar. Lots of BU Morgan and Peace Dollars incl. Certified 1878 7/8tf MS63, 1927s MS64. 25 pcs. US Gold incl. 1882 \$3 UNC. Mexican Gold Type Set (1 peso-50 peso).

**** 23 Original US Double Mint Sets 1938-1958 ****

Cat. and info. call Mike @ (717) 993-2588 or leave message at (717) 382-4757.

Auctioneer: Martin Heaps
(PA License #AU0002762-L)

"Horst Auction Center"

COIN SALE

SAT., JUNE 7, 2003

SALE TIME 9:00 A.M.

Inspection - Friday, June 6th
from 1:00 P.M. till 5:00 P.M. and
Sat., June 7th 7:00 A.M. thru sale.

Sale to be held at the Horst Auction Center, located at the corner of Rt. 322 & Durlach Rd. (Approx. 2 1/2 miles west of Ephrata), Ephrata, Lancaster Co., PA.

Sale includes foreign currency representing 17 different countries. Also 175 lots of both bulk and single foreign coins. Many nineteenth century coins are part of this group including: 1804 Bank of England \$1, Puerto Rico 1 Peso 1895, Mexico 8 Reales 1860 etc. Also included in sale are 200 plus lots of desirable U.S. Coins - including: G.S.A. CC \$1's, 1868 5¢ PCGS 65, 1927 \$20 Gold PCGS 65, 1888 3¢ PCGS PR 64, 1878 \$3 Gold PCGS AU 58, partial sets, Mint/Proof Sets, 90% Silver, \$2000 Mint sewn bag Sacagawea \$1's first year of issue, etc. Plan to attend this fine coin sale!

Plan to Attend This Fine Sale!

For Sale List Call Auctioneer (717) 738-3080

Terms: Cash or PA Approved Check.

HORST AUCTS.

T. Glenn
Timothy G.
Thomas A.

AU438L
(717) 859-1331 (717) 738-3080
Fax # (717) 738-2132
www.horstauction.com
"VOICES OF EXPERIENCE"