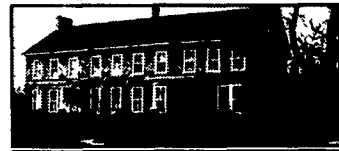




8795 PINEVILLE ROAD, SHIPPENSBURG, PA 17257
Four bedrooms, 3 full baths, b-level home on 3.5 acres with inground pool, deck, patio, shed, 4 stall horse barn, 30x50 metal shed, fenced pastures, room for family and entertaining, professionally landscaped. **FL4776539, offered at \$350,000, "YOUR HOME IS WAITING - COME AND GET IT!"**



1061 RIDGE ROAD, SHIPPENSBURG, PA 17257
16-room brick mansion on 6.11 acres. Let this one catch your eye! Large brick home, 4200 sq ft., large stone bank barn, 6.1 acres of land. Room to store materials, equipment, supplies, etc. CB4486610. Priced for you at **\$399,000.**

In Adams County, an aggressive 10 room Bar & Grill business. Call for more details!!



Kelly Shetter
717/709-4069
Jack Gaughen Realtor ERA
717/264-9600

Central Virginia



LOG HOME-PRIVATE LAKE - 40 ACRES- Heart pine floors, fireplace, full wrap porch, full bsmt, 40'x40' garage, 5-acre lake, beautiful quiet place. **Must See. \$329,000.**



EVENING SHADE - Beautiful 34 acre horse farm. The custom living quarters are over the barn with 8 stalls. Nice timber, stream, plus a 40' x 60' stable with stalls, storage and a loft. **Great opportunity. \$279,000.**
Larry Atkins, State Wide Realty Company, Farmville, VA. 434/392-6163. www.vastatwiderealty.com

POSSON REALTY & Auction Service



787 Bates Wilson Road
Norwich, NY 13815 (607) 334-9727
www.possonrealty.com

Farms For Sale

#1776 - 350 Acre Farm - located in Tioga County, NY - 20 minutes from Binghamton, 8 miles from Rt. 17. 150 acres, in fields, 20 acres pasture, 180 acres in nice woods. Remodeled 1850 two story home, very nice two story barn with drive-in mow. Stocked trout stream. Situated on quiet road. **Asking \$325,000.**

#1794 - 20 acres with home near Cobleskill. 20 acres mostly in field. Nice three bedroom ranch style home. Nice setting minutes from downtown Cobleskill. **Asking \$165,000.**

#1805 - 263 acre dairy farm located in the Town of Newport, NY, 90 acres tillable, very good soils. 60 acres of pasture, balance woods. Two story dairy barn w/6 tie stalls on pipeline, 38 tie stalls for heifers, 17 stalls for calves. Enclosed manure room. Big machinery building 56 x 80. Nice two story four bedroom home. Farm borders the West Canada creek, excellent fishing. **Asking \$231,500** for this good farm.

#1806 - Hobby farm on the Unadilla River. 120 acres, 60 acres tillable. Some river bottom soils, 50 acres woods, 10 acres of pasture. New 30 x 40 shop building. Remodeled 10 room 3 bedroom Victorian home. Priced to sell. **Asking \$175,000.**



DEMERE REALTY
171 N Gardiner Rd.
Little Falls, NY 13365
Phone (315) 823-0288
George Demeree, Broker



demereerealty.com

#51-A - Hobby farm w/155 A. - 60 tillable, 44 pasture, 50 woods - nice 3 BR home w/attached 2 stall garage - also trailer to rent out - 2 story barn w/62 stalls, B Cleaner, B T - like new 32x40 ft mach. shed with 12' doors, wood stove & oil furnace - 40x40 ft. mach. shed - 2 silos w/unloaders - drilled well, 2 springs & 2 creeks - **\$180,000.**

#360 - FREE STALL DAIRY FARM - 217 A. - 108 tillable - one story free stall barn for 146 cows - double-7 herringbone parlor w/automatic take-offs - 1500 gal BT - lg heifer barn w/bunk feeder in center - 20x100 ft. mach. shed - 5 lg. silos w/unloaders - Slurrystore w/7 mos. storage - 9 rm., 2 fam. home w/5 B.R.'s & 2 baths - 5 car garage w/walk-in freezer - 2 house trailers - lots of water - **\$325,000** - rented land avail.

#502 - (COBLESKILL AREA) Dairy farm w/270 acres - 125 tillable - 36x160 & 36x100 ft milking barns for total of 120 cows & 38 heifers - fully equipped w/2" pipelines & B.T.'s - 2 lg. silos w/unloaders - two 20x80 ft. bunk silos w/6 ft. walls - 20x60 ft. heifer barn & out bldgs. - 3 wells & lg. pond - **\$370,000**

B-312 - Dairy farm w/lg. fields - 160 A. - 100 tillable - 57 cow tie stall barn & free tall for 40 head - VG 10 rm. home w/modern kitchen, 4 B.R.'s & in-ground pool - EX spring & 2 ponds - **\$225,000.**

W-116 - Dairy/hobby farm w/140 A. - 75 tillable - 80 cow tie stall barn with mattresses - free stall barn for 80 heifers - 36x120 ft. mach. shed - EX 12 rm. home - owner willing to subdivide this very well-kept property. **\$295,000** - Could also be bought as a 300 A farm.

#34-A - Lg. free stall operation for 1600 cows - 551 acres w/471 tillable - 80 A river flat - some irrigated - 4 lg free stall barns & calf barn for 120 head - rapid exit double-12 Boumatic herringbone MP w/auto take-offs & I.D. meters w/sorting gate new in '94 - 3 offices & 2 employees rms - 2,000 & 4,000 gal B T's - 48x100 ft Morgan bldg w/heated shop - new 100x200 ft paved bunk silo - can be expanded to 300x200 ft - VG. 12 rm. Colonial home, 2nd home & mobile home - **\$1,300,000. REDUCED TO \$600,000.**

(2) adjoining farms, 245 acres, dairy setup w/parlor & manure systems. Over 1 1/2 mi. road frontage. Newer bldgs. on both farms. (2) large farmhouses. Historical 1779 fort, Upper Northumberland Co. (570) 649-5096

SANFORD G. LEAMAN, REALTOR/AUCTIONEER
101 White Oak Drive, Lancaster, PA 17601-4842
Phone: (717) 569-4264 - Toll Free: 1-800-836-8113
FAX: (717) 569-8847

Specializing in Farm Real Estate & Equipment
Web: www.lamnauct.com
Email: farmboy@lamnauct.com

New Agent - Ben Siegrist
Real Estate & Auctioneer
Call 717-284-4268

Central Northumberland Co. 71 acre Amish equipped dairy farm. The setting is ideal, excellent soils, beautiful 3 bedroom farm house w/modern kitchen, Parquet oak floors and lots of excellent living area. There is a large horse barn, milk stable, implement shed and much more. Let me give you a private tour. You can have settlement now to honor your tax deferred exchange with possession at a later date. I'll handle those details for you. It won't last long - it's priced right.

Bradford Co. Rome area 155+/- acre dairy farm with 54 stanchions on 2" pipeline, 6 Surge milkers, bulk milk tank, silo and a beautifully remodeled 2/2 story farm house. There is an implement shed/young stock facility and in an area of good farms. Priced @ \$299,900. It should be sold very quickly at this price.

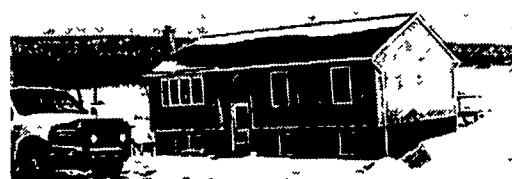
NEED A 100 ACRE FARM
NEED NOT BE DAIRY
in Troy, Canton Bradford Co. Area

Nippenose Valley
PRICE REDUCED



Lycoming County, Jersey Shore area. 50 acres, 44 tillable, 6 pasture. 40 more acres available to rent. House 4/5 bedrooms in very good condition. 40x90 Cow barn with 40 tie stalls 2 silos, 2 calf barns, heifer & chicken barns 20x30 road side stand. This is an established business and a profitable income producer. Amish equipped.

Brush Valley
PRICE REDUCED!



Centre County, Miles Township, Rebersburg area. 13.8+/- acres. Nice 3 bedroom 2 bath house. 40x100 pole barn with shop area. 14x20 lawn mower shed, 40x60 bank barn with loafing area. Both barns have water & electric.

Brush Valley
SALE PENDING

Centre County, Miles Township, Rebersburg area. 14.2+/- acres. Vacant Land, 50 feet road frontage. Ideal for horse farm or build your dream house.

Lebanon County

Annville, Ft. Indiantown Gap, Harrisburg area. Two 44' x 360' two-story chicken houses. Contracted for natural antibiotic-free, hormone-free chickens. This farm provides a high income. Good investment property or build a house and live on the property.

Schuylkill County

South Manheim Twp.,

Schuylkill Haven School District

32.9+/- acres of bare ground, 10-12 acres open land, balance is wooded. Located in the Auburn area, between Reading & Pottsville. Close to Route 61. Make your own horse farm or build your dream house.

Call Hiram Hershey, Broker
Thomas Hershey, Realtor Associate
HERSHEY FARM AGENCY, INC.
1-800-880-3831

Northumberland Co./Acreage Only
(Broker Owned)

17 acres, all tillable, a square level field perfect for nursery or vegetables **\$179,000**
73 acres, 25 tillable, balance wooded, 1,200' road frontage .. **\$279,000**
54 acres, all wooded **\$189,000**
35 acres, 12 tillable, balance wooded, excellent hunting. **\$109,000**

PETER B. CORTELYOU

Real Estate Herndon, PA 17830
Peter B. Cortelyou, Broker

570-425-9177 Fax 570-425-2305

ENDLESS MOUNTAIN REAL ESTATE COMPANY

(570) 659-5684 Covington, PA
BRADFORD & TIOGA COUNTY

Century Old Colonial, 5400 sq ft., many new improvements in recent yrs., yet still needs add'l updating, 9 BR, 10 baths, spacious rms, NG heat, balcony wrap-around porch, 1.94+/- acres, most furnishings, linens, & dinnerware from former B&B included **\$145,000 (#1013)**

Endless Possibilities! 2 sty commercial bldg w/excellent main street location in small community NG/FHA heat, 1/2 bath, large display wndws, curbside parking, add'l extra potential income w/upstairs apartment in need of repair, good location for sm business, shop, or office. Reduced! **\$45,000 (#1059)**

Nice Country Setting, cozy 2 sty. home w/3 BR, 1 1/2 baths, 2 heat sources, nice porch overlooking 1+/- acre stocked pond, 2 car det garage, private well/septic, plus rental or guesthouse w/completely renovated singlewide home offering 2 BR, 1 bath, spring water, private septic & sm. storage shed, 38+/- acres **\$149,900 (#1060)**

Beautiful Federal Georgian, 3246 sq. ft, 4 BR, 2 1/2 baths, (2) 3-season porches, NG/HW heat w/2 boilers & 4 zones, authentic features include operating fireplace, several light fixtures, Southern Yellow Pine wdwk, Cedar lined closets, Oak flrs & staircase, architectural plans, & tm walls/ceilings in att. garage 0.656+/- acre corner lot, exceptional landscaping, must see! **Reduced! \$145,900 (#1061)**

www.endlesstrealstate.com • Email: end@epix.net

THE REAL ESTATERS OF MANSFIELD

1671 S. Main St., Mansfield, PA 16933
(570)662-2138 • Evening (570)662-2363
realmans@epix.net

WELLSBORO AREA RETREAT!

4.2 surveyed acres just 1,200 feet from state forest lands. Short drive to Pine Creek and PA Grand Canyon. Approved sewage site. Mostly wooded with small wetlands to draw wildlife for viewing or hunting. **Just \$14,900. M-1468**

STATE GAME LANDS #37

Surrounds this just surveyed 178.26 ac tract on 3 sides near Mansfield & Wellsboro, PA. Approx 35 acres of fields/pasture w/bal wooded (timber cut reserved - contract avail. for review). Stream thru property. Electric 300' away. **Just \$1200 P/Ac. \$213,900. M-1690**

OPERATING TRUCK STOP

On Rt 15 near Mansfield, PA. Includes family style restaurant and 2 homes 2 wells and public sewer 3200 sq ft repair garage with 528 sq ft. office. Lots of paved and gravel parking on 9.39 acres. New listing at **\$900,000. M-1697**

FANTASTIC ACREAGE & HOMESITE

69.15 surveyed acres near Jobs Corners. Minutes to Mansfield, Troy & Elmira. Mix of fields and woods with seasonal stream 1596 ft. of frontage on T-950 & 1,176' on private road, approved sewage site, electric & phone available. **\$103,725. M-1663**

HILLS CREEK STATE PARK

Location for this 2 acre tract w/long frontage on paved road, less than 300 ft. from park, approved for low cost "inground" septic system. Utilities available on site or very close. Minutes to Mansfield+Wellsboro, PA **\$27,900. M-1635**

WHAT A RETREAT

2 story remodeled farm house. Approx 2614 sq. ft. w/5 bdrms, 2 baths, A/C, 2-car garage, 3 outbldgs including 24x59 garage/shop w/2 horse stalls on 6.23 acres. 1 mile to State Game Lands #12. Close to Canton & Wheelerville. Fox Twp., Sullivan Cty. **Just \$150,000. M-1715**

ROARING BRANCH HOME/CAMP

1064 sq. ft. 1994 manufactured home in like-new condition. Easy access off Rt. 14. Existing septic. Town water. 2 bdrms 2 baths. State Game lands nearby. Easy commute Canton/Williamsport. **REDUCE to Just \$57,900 M-1675**

MT. TOM HIDEAWAY

3.02 surveyed all wooded acres on Mt Tom. Approved perc site & privy in place now. Less than 10 minutes to Pine Creek, PA Grand Canyon & State Land Association maintained roads w/gated access to assure privacy. **Just \$15,700. M-1656**