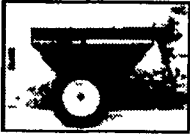


**Custom Built
TARPS & COVERS**



For Grain Carts, Farm Trucks, Semi-Trailer Tarps, Boat Covers or anything that needs to be covered.



Call Today For Prices

WILKENS
WALKING FLOOR-TRAILERS

**TARPS
UNLIMITED**

877-858-5656 or 717-933-9950

LESHER SALES & SERVICE
2700 Cumberland St. Lebanon, Pa. (Route 422 West)
717-273-4535
website: www.leshermacksales.com

New Trucks

- (2) 2004 CX613 Day Cab, E7-427, 10-Spd., Air Susp., 169 W.B.
- (2) 2004 CX613 Sleeper, E7-427, 10 Spd., 70 Midrise, Air Susp., 222 W.B.
- (2) 2003 CV713 Granite, A1-427-Aset, RTO 14908LL, Long Wheel Base: (1) 265", (1) 275"

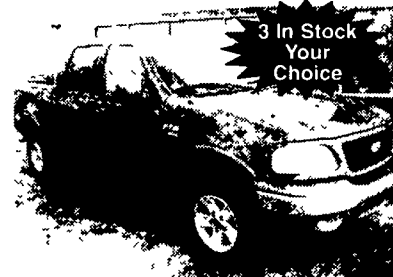


Used Trucks

- (1) 1995 CH613, 42 in. Highrise (Sleeper Box can be removed for min. cost.)
- (2) 1999 CH613, 210 W.B. E7-427, 10 Spd., 50 inch Flat Top, 417 K Miles, 430 K Miles

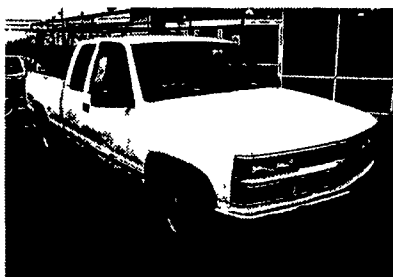
Many other Trucks in Stock - Call for Details

WHITMOYER FORD 717-367-7022 800-267-2089
RHEIMS / ELIZABETHTOWN EXIT OF RT. 223 ELIZABETHTOWN, PA
www.whitmoeyerford.com
Over 80 Quality Pre-owned Vehicles In Stock

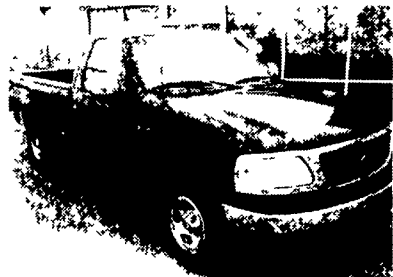


3 In Stock Your Choice

2002 Ford F-150 Supercrew
8 Cyl., 5.4L, Auto, Fully Loaded
#P3443 **\$25,650**



1998 Chevy 1500 Cheyenne
8 Cyl., Auto, A/C, Cruise, Tilt
#P1010A **\$10,995**



2001 Ford F-150 XL
6 Cyl., 5 Speed, Loaded, Long Bed
#P3694 **\$14,995**



1989 Ford F-250 XLT
8 Cyl., Auto, Loaded
#P3438B



2003 Ford F250 XLT
6.0L Diesel, Auto, Fully Loaded
#W5388 MSRP **\$40,285**
Discount -2,286
You Pay **\$37,999**

0% financing for 60 months available on new F150's!

26' double deck alum. body, lift up doors
\$2,950 obo • 215-256-9720

Milk Tanker - 1979
Diamond Rio Giant, 855 Cummins, 9 spd, titled 62,000 LBS w/1980 Walker 4300 gal tank, rebuilt 1999 @ Hi Tech, Lancaster
Joe @ 610-932-4546

53 Chev. Truck, 5 window, dually, short wheel base, rebuilt 6 cyl, new brakes and tires, no rust, runs good
\$3,500
Ph. 717/246-0910 or 717/891-7507

Clean, dependable, strong - 1978 Int. Paystar 5000 tri-axle log truck w/1982 Prentice 120 loader, 555,000 miles, 350 Cummins Big Cam, 150,000 miles on engine major - Rockwell rears, Hendrickson rubber block - 13 speed trans
717/436-8376 or 717/994-2223

PINE TREE MOTORS
2407 W. Main St., Ephrata 17522
717-738-2242
Over 75 Vehicles To Choose From www.pinetreemotors.com

99 CHEV. K2500 CLASSIC, 5.7L FI Vortec V8, AT/OD, 4X4, A/C, Tilt, Cruise, AM/FM, PS, PB (ABS), Delay Wipers, Cloth Seat, Rubber Mat, Fiberglass Cap Bed Mat, Towing Package, 8,600 GVWR, White, 93,000 Miles \$12,500

01 DODGE RAM 3500 SPORT DUALLY, 5.9L 24 Valve Cummins Turbo Diesel, 6 SPD, 4X4, Quad Cab, PW, PDL, PWR Mirrors, Tilt, Cruise, Dual Airbags, AM/FM Cass & CD, PWR Heated Seats, Leather, 6 Pass, Towing Package, Black, 61,000 Miles \$28,900

00 FORD F550 SUPER DUTY XL DUMP TRUCK, 7.3L Power Stroke Turbo Diesel, AT/OD, A/C, PW, PB (ABS), AM/FM, 17,500 GVWR, Delay Wipers, Heil Steel Dump Body w/Roll up Tarp, Pintle Hitch, Brake Controller, Factory Warranty, Blue, 67,000 Miles \$28,900

96 FORD E350 CARGO VAN, 7.3L Power Stroke Diesel, AT/OD, A/C, PS, PB (ABS), Air Bag, Delay Wipers, AM/FM Radio, Shelves Divider 9,500 GVWR, Side Sliding Door Fresh Transmission Service White 118,000 Miles \$10,900

01 CHEV G3500 EXPRESS LS EXT, 8.1L FI Vortec V8 AT/OD, Dual A/C & Heat, PW, PDL Tilt, Cruise, PS, PB (ABS), Dual Airbags AM/FM CASS, Delay Wipers, Privacy Glass Rear Defroster, 12 Pass Side Barn Doors, Green, 98,000 Miles \$13,900

99 CHEV K2500 SILVERADO LS EXT CAB, 6.0L FI Vortec V8, AT/OD, A/C, 4X4, PW, PDL, Tilt, Cruise, AM/FM CD, Dual Airbags 3rd Door Bed Liner, Razor Back, Side Steps Alloy Wheels, Short Bed, Towing Package, Charcoal Gray, 78,000 Miles \$18,495

97 DODGE DAKOTA SPORT 2.5L FI 4 Cyl, 5 SPD, PS, PB (ABS), AM/FM CASS, 2WD, Dual Airbags Short Bed Bed Liner, Alloy Wheels Black 96,000 Miles \$4,995

94 CHEV C3500 HD UTILITY BUCKET TRUCK 6.5L Turbo Diesel V8 AT/OD, PS, PB, Delay Wipers, Running Boards, 15,000 GVWR, Composite Utility Body Telsta High Reach Bucket, Inverter, White 92,000 Miles \$10,900

92 CHEV BEAUVILLE G20, 6.2L Diesel Engine, AT/OD A/C, Dual Heat, PW, PDL, Tilt, Cruise, Delay Wipers, PWR Mirrors, AM/FM Radio, Privacy Glass, 8 Pass, Alloy Wheels Side Barn Doors, Towing Package, Blue/White 145,000 Miles \$4,800

FINANCING AVAILABLE

02 MITSUBISHI GALANT ES, 4 DR, AT, AC	\$11,900	99 FORD WINDSTAR LX, TWIN DOORS, AT, AC	\$9,900
01 CHEV IMPALA, AT, AC, 4 DR	\$9,450	99 FORD CLUB WAGON EXT, AT, AC	\$10,900
00 PONTIAC GRAND PRIX GT, AT, AC, 4 DR	\$10,495	99 FORD E250 CARGO VAN, AT, AC	\$9,800
00 CHEV CAVALIER Z24, AT, AC, 2 DR	\$9,900	99 CHRYSLER TOWN & COUNTRY LX	\$8,900
00 TOYOTA COROLLA VE, AT, AC, 4 DR	\$8,900	98 FORD E350 CARGO VAN, DIESEL	\$10,900
99 VW JETTA GL, AC, 5 SPD	\$10,495	98 FORD WINDSTAR GL, AT, AC	\$7,995
99 BUICK CENTURY CUSTOM, AT, AC 4 DR	\$7,495	98 CHEV VENTURE LS, AT, AC, 7 PASS	\$8,800
98 HONDA CIVIC, 5 SPD, AC, 4 DR	\$7,995	98 GMC SAVANA G1500 CARGO, AT, AC	\$8,995
98 DODGE STRATUS, 4 DR, AC, 4 DR	\$6,500	98 CHEV ASTRO CARGO AT, AC	\$7,995
98 DODGE NEON, AT, AC, 4 DR	\$4,995	98 FORD E150 CLUB WAGON XLT, AT, AC, 8 PASS	\$8,995
97 VW JETTA GL, 5 SPD, AC	\$6,500	97 OLDS SILHOUETTE GLS EXT TWIN DR, AT, AC	\$9,900
97 DODGE INTREPID, AT, AC, 4 DR	\$4,995	96 DODGE B3500 SLT, AT, AC, 15 PASS	\$9,800
97 MAZDA PROT G LX, 4 DR	\$4,800	95 FORD E350 EXT CARGO, AC, AT	\$6,900
95 HONDA ACCORD LX, AT, AC, 4 DR	\$7,995	94 GMC SAFARI SLE EXT AWD, AT, AC, 8 PASS	\$5,995
94 CHEV CORSICA	\$1,995	94 DODGE B150, AT, AC, 8 PASS	\$3,900
90 HONDA ACCORD LX, AT, AC, 4 DR	\$4,800	94 PLYMOUTH VOYAGER	\$2,500
90 PONTIAC BONNEVILLE LE, 4 DR, V6, AT	\$1,995	92 CHEV BEAUVILLE G20, DIESEL	\$4,800
70 CHEV NOVA, 2 DR	\$3,900 OBO		

CARS

00 CHEV TAHOE LS, 4x4	\$19,900
00 DODGE DURANGO SLT, 4x4, 3RD SEAT	\$17,900
00 DODGE DURANGO SLT, 4x4, 3RD SEAT	\$15,995
00 DODGE DURANGO SLT, 4x4, 3RD SEAT	\$11,900
00 JEEP GRD CHEROKEE LAREDO, 4x4, AT	\$11,995
00 CHEV S10 BLAZER LS, 4x4	\$10,495
00 CHEV SUBURBAN LT, 4x4	CALL
99 JEEP GRD CHEROKEE LAREDO, 4x4, AT, AC	\$14,995
99 JEEP GRD CHEROKEE LAREDO, 4x4, AT, AC	\$13,500
99 MITS MONTERO SPORT XLS, 4x4, AT, AC	\$12,900
99 DODGE DURANGO SLT, 4x4, 3RD SEAT	\$12,900
98 DODGE DURANGO SLT, 4x4, AC, AT, 3RD SEAT	\$11,900
97 CHEV S10 BLAZER I S, 4x4	\$5,995
97 GMC SUBURBAN SLT, 4x4, AC, AT	\$13,900
97 GMC YUKON SLT, 4x4, AT, AC, LEATHER	\$13,500
97 JEEP CHEROKEE SPORT, 4x4, AC, AT	\$4,995
96 CHEV TAHOE LS, 4x4, AC, AT	\$11,500
96 GMC JIMMY SLE, 4 DR, 4x4, AT, AC	\$7,995
95 GMC SUBURBAN SLE, 4x4, AT, AC	\$11,900

SPORT UTILITIES

01 DODGE RAM 3500 SPORT DUALLY, QUAD CAB, 6 SPD, 4x4	\$28,900
01 DODGE RAM 1500 WS, AT, AC, LOW MILES	\$11,900
00 CHEV K2500 LS QUAD CAB, 4x4, LOADED	\$22,900
00 FORD F550 SUPER DUTY XL DUMP TRK, DIESEL	\$28,900
00 DODGE DAKOTA SLT QUAD CAB, AT, AC, 2WD	\$12,800
00 DODGE DAKOTA SPORT, 2WD	\$8,900
99 CHEV K2500 SILVERADO LS EXT CAB, 4x4	\$18,495
99 DODGE RAM 2500 SLT, 4x4	\$10,900
99 FORD F250 SUPER DUTY XLT, AT, AC	\$12,900
99 CHEV K2500 CLASSIC, AT, 4x4	\$12,500
99 FORD F250 SUPER DUTY, UTILITY TOPPER, 4x4	\$12,500
99 FORD XLT RANGER, 4x4, QUAD CAB, AT, AC	\$9,995
99 CHEV S10 LS EXT CAB 4x4, AT	\$10,495
99 CHEV C1500 SILVERADO, AT, AC	\$8,995
99 CHEV S10 LS, 5 SPD, AC, 2WD	\$7,500
99 DODGE RAM 2500, AT, AC, 2WD	\$7,800
98 DODGE RAM 1500 SPORT, QUAD CAB, 4x4	\$11,900
98 DODGE DAKOTA SPORT EXT CAB, 2WD	\$8,900
98 CHEV S10 LS, 5 SPD, AC, 2WD	\$6,500
98 DODGE RAM 1500 SLT, 4x4, AT, AC	\$11,900
98 ISUZU NPR, 15 BOX, AT	\$11,900
98 DODGE DAKOTA SPORT EXT CAB, AT, AC, 4x4	\$10,900
97 FORD F350 XLT EXT CAB DUALLY, 2WD, AC, 5 SP	\$12,900
97 DODGE DAKOTA SPORT EXT CAB, 4x4, AT, AC	\$8,995
97 DODGE DAKOTA SPORT, 2WD, 5 SPD	\$4,995
96 CHEV C2500 SILVERADO EXT CAB, UTILITY BODY	\$10,900
96 DODGE RAM 1500 SLT, AT, AC, 2WD	\$7,995
96 GMC K1500 SLT EXT CAB, 4x4, AT, AC	\$11,900
95 FORD F350 BOX TRK, POWER STROKE DIESEL, AT	\$10,900
94 CHEV C3500 HD UTILITY BUCKET TRUCK, AT	\$10,900
93 CHEV C3500 HD UTILITY BUCKET TRUCK, AT	\$10,900
91 CHEV C3500 HD, AT, 8 B BODY/FLAT BED	\$7,995

TRUCKS