

35

TRUCKS AND TRAILERS



1992 Ford Van Body
\$2,695



1996 Int. Cab & Chassis
\$8,500

Freightliner of Lancaster

717-581-3480 • 1-800-769-9887

"TURN TRASH TO CASH"



1985 International model 1954 Trash Truck
DT 466 Diesel, 210 HP, 5 Speed, Air Brakes, 33,000 Lbs GVW, 10x20 Tires, Dempster 20 Yard Rear Packer, Runs Good, Needs a Hydraulic Line
\$3,490
Call Ray at 856-424-6300

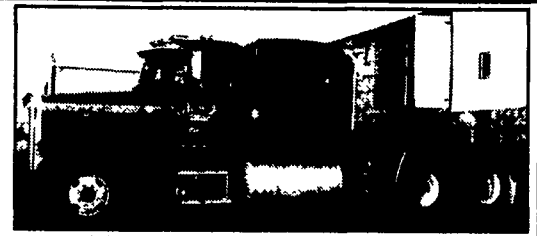
Roll-Rite
ELECTRIC TARP SYSTEMS
the original polished-aluminum and the original direct-drive electric tarp system

Elmers Garage
East Berlin PA
717-292-3030
Sales Installations Parts

Automatic & Semi-Automatic Front-to-Back & Side-to-Side

- * Farm Dump
- * Stone Dump
- * Light Truck
- * Landscapers
- * Silage Trucks
- * Dump Trailers
- * Walking Floors
- * Hopper Bottoms
- * Roll-Offs
- * On-site Mixers

Call Now For More Info and Prices



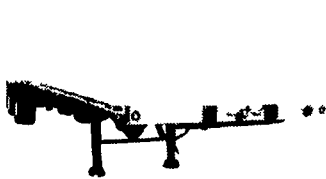
93 Peterbilt 378, 63" flat top, 60 series, 430 Detroit, 18 spd. trans., 693k miles, very good cond. • \$11,900 obo
Call 717-776-7806
Cell 717-226-5418 Keith

COOPERSBURG TRAILER SALES

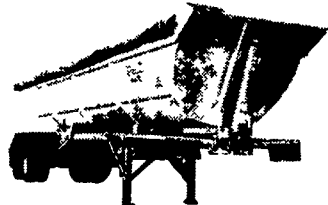
Contact: Ron Perruso Ext. 173 or email: ron@coopskw.com

Route 309 Between Allentown and Quakertown, PA

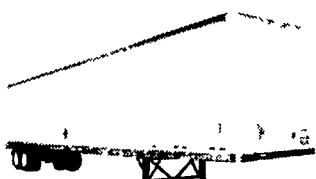
SALES: 800-381-5752 • FAX: 610-282-3900



New Manac Combos & Flatbeds In Stock.



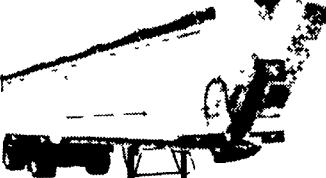
(1) 1999 JMH Alum. Tub Dump, 38' alum., Air Ride, \$18,900 \$16,900.



(3) 2004 Manac 53' Vans, Air Ride, trans. roof, log. posts, \$18,900. (nap)



1992 Wilson Cattle, 48'x102", alum. wheels, \$12,900.



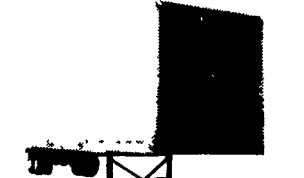
(5) 1999-2001 Mac Dump, 40'x102", 84" sides, alum. frameless. Air Ride spread, alum. wheels, roll tarp, 2001 \$26,900, 2000 \$24,900, 1999 \$23,900, 1996 \$21,900.



(3) 1997 Transcraft Eagle 48'x102", Air Ride spread, alum. wheel, inside kit, \$8,900.



2003 MAC Walking Floor, Tipper & Dumps, always competitive pricing.



(5) 2000 & 1999 Fruehauf 53'x102" Dry Vans, Air Ride slider, translucent roof, log. posts, starting at \$8,900.

2003 Manac 48'x102" alum. combo, spread axle, \$18,900. 2002 Transcraft 48'x102" combo, Air Ride spread axle, \$13,900. 2000 Dorsey 48'x102" combo, Air Ride spread axle, \$11,900. 1999 Lufkin 48'x96" steel, Air Ride spread axle, \$7,900. 1999 Transcraft 48'x96" combo, Air Ride spread axle, \$9,900. 1998 Ravens 48'x102" alum., Air Ride spread axle, \$13,900. 1998 Transcraft 53'x103" combo, Air Ride spread axle, \$9,900 (3) 1997 Transcraft 48'x102" combo, Air Ride spread, side kit, \$8,900. 1996 Talbert 48'x102" steel drop deck, Air Ride spread, \$9,900 (2) 1992 Transcraft 45'x96" steel, Air Ride spread axle, \$4,900. 1991 Dorsey 45'x96" steel, Air Ride slider, \$3,900. 1989 Trailmobile 45'x102" steel spring slider, \$2,900. (3) 1988 Great Dune 45'x96" steel, spring slider, very good, \$4,900. 1988 Dorsey 45'x96" steel, spring slider, very good, \$4,900. 1987 Fruehauf 45'x96" steel, spring slider, very good, \$4,900

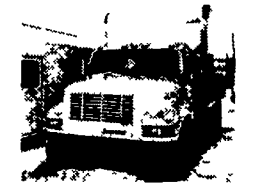
LEED TRUCK CENTER
402 South Chiques Rd. Salunga Exit, Route 283
717-898-1200



1996 CHEVROLET C3500, 9' Stahl Enclosed Utility Body Crew Cab, Dual Wheel, 10,000 GVW 6.5 Liter Turbo Diesel A/T P/S P/B New Insp \$8,500



1986 UD NISSAN CPC, 6 Cyl Turbo Diesel, 6 Spd P/S, A/B 30,000 GVW 20' C&C Great Work Truck Only \$3,000



1996 IHC 4700, T444E Turbo Diesel, 5 Spd, P/S, Hyd Brakes Cruise Non CDL 25,500 GVW 16 Duralite Van Very Clean Only \$10,900



1988 PETERBILT CONV, Cummins Turbo diesel P/S 9 Spd, AC, A/B 50,000 GVW 22' Stahl Platform Body with (4) 550 Gal Snyder Tanks Plus Hose & Meter System Air Ride Susp Priced To Sell

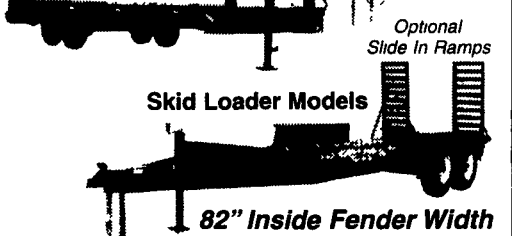
IN STOCK AT BINKLEY & HURST BROS. INC.!
A TRAILER THAT DOES IT ALL!



Tradition in Progress



Deck Overs w/Flip Tail Hay Hauler Special

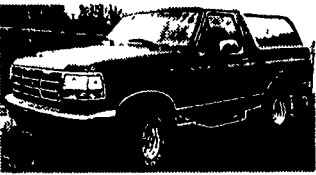


BINKLEY & HURST BROS. INC.

133 Rothsville Station Rd. P.O. Box 0395, Lititz, PA 17543-0395 (717) 626-4705 1-800-414-4705 Fax (717) 626-0996

WILLIAM H. WESSELS USED CARS

811 Route 15 Dillsburg, PA
1-800-440-4433 1-717-432-2918
Notary Public - Temporary Tags



1996 FORD BRONCO, EDDIE BAUER 351 V-8, Auto, AC, Leather, 115,000 Miles, Local Trade \$7,990



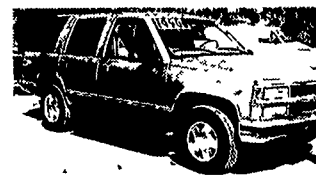
2000 Ford F350, Quad Cab 4x4, Diesel, Utility Box, 54,000 Miles, 1 Owner Nice \$26,900



2000 DODGE GRAND CARAVAN V-6, Auto, 63,000 Miles \$8,990



01 DODGE RAM 1500 3.9 V-6, Auto, AC, 39,040 Miles \$10,900



99 CHEVY TAHOE LS 350 V-8, Auto., AC, 80,000 Miles \$14,900



1995 FORD F150 EX CAB 4x4, Short Bed, V-8, Auto, AC, 105,000 Miles \$7,990



2000 CHEVY ASTRO AWD Cargo Van, V-8, Auto, AC, 56,310 Miles \$10,900



1999 DODGE DAKOTA CLUB CAB 4X4 V-8, Auto, AC, 45,310 Miles \$15,900



1997 GMC K2500 4x4, 350 V-8, Auto, AC, 92,970 Miles \$8,990



2002 TOYOTA TUNDRA, Ex. Cab, 4x4, V-8, TRO Off Road Pkg., 9,000 Miles \$24,900



2000 CHEVY SUBURBAN LS 4X4 V-8, Auto, Dual AC, Sunroof 36,380 Miles \$26,900



1996 FORD F150 XL 4x4 4.9L, 6 Cyl., 5 Speed, AC, 87,000 Miles \$6,990



96 FORD F250 4x2, XL, 4.9L 6 Cyl., Auto, AC, 62,000 Miles \$8,990



01 DODGE B1500 Fxt. Cargo Van V-6, Auto AC, 35,000 Miles \$13,900



1997 FORD F350 UTILITY TRUCK, 4x4, 460 V-8, Auto, AC, 91,000 Miles \$14,900



1996 FORD F150 XL 4x4 4.9L, 6 Cyl., 5 Speed, AC, 87,000 Miles \$6,990