

Reg. Black Percheron Mare

- Tall & Up headed
- Very nice w/children
- Wonderful disposition

Also Younger Horses For Sale

Aaron Beller
Lanc. Co., PA
Voice Mail 717-556-2778

HEAVY DUTY COMPACT SPREADERS



ABC GROFF
The Name You Can Trust Since 1890

MILLCREEK MANUFACTURING CO.

www.abcgroff.com • 1-800-346-8319

MEL'S STABLE

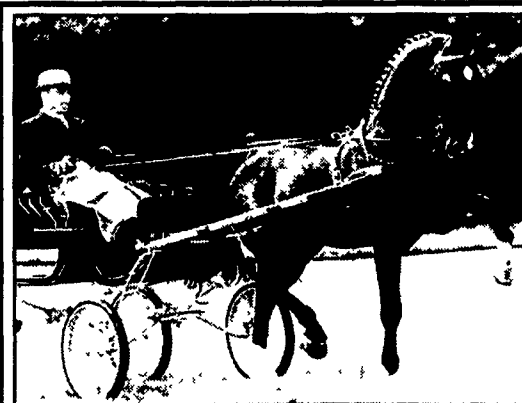
SELECTED CONSIGNMENT

WORK HORSE, MULE & DRIVING HORSE SALE

SAT. JUNE 7, 2003 • 9:00 A.M.

HORSES HITTED AT 8:30 A.M. SHARP SALE HELD AT 834 WALLACE RD. NEW HOLLAND, PA DIRECTIONS FROM RT 23 IN NEW HOLLAND, GO SOUTH ON BRIMMER AVE. GO 2 MILES SOUTH ON NEW HOLLAND ROAD TO HILL RD. TURN LEFT ON HILL RD. PROCEED 1/2 MILE TO SALE ON THE LEFT FROM RT 340 EAST OF INTERCOURSE TAKE NEW HOLLAND RD 2.5 MILES TO HILL RD., RIGHT ON HILL RD TO SALE ON LEFT

MEL'S STABLE
OWNER - MEL HOOVER
PHONE - HOME - 717-354-8397
BARN - 717-354-8431
AUCTION - MEL HOOVER AU003111L
NOT RESPONSIBLE FOR ACCIDENTS
FOOD ON PREMISES



Imported from Holland, ORLANDO is a black 17.1 Hand Dutch Harness Horse Stallion.

The Dutch Harness Horse is a wonderful horse to cross with existing breeds of horses used for driving and work. Dutch Harness Horses have been bred in Holland for over 80 years. The sole purpose is to increase trot and stride, thus producing driving horses that move more efficiently and cover more ground with less effort.

Exciting opportunities exist for the serious breeder looking to be involved with the induction and infusion of these great horses into today's breeding programs.

ORLANDO is standing at Mogadore, Ohio for the 2003 breeding season, shipped semen is available. The 2003 introductory stud fee is \$1000.00 and includes a live foal guarantee.

For breeding information and available bloodstock in Holland, NL contact:

Colin Shields
P.O. Box 3065
Champaign, IL 61826
217/352-9902

Skyline Stables Tack & Supply

All Breed Horse Sale
10 Stone Avenue, Alburty PA
June 22, 2003

*** Horse sales will be held the 4th Sunday of each month***

New & used tack: 12:00 Noon with Black Hills Horse Equipment
Registered horses at 3:00 p.m., grade horses to follow

All horses represented and guaranteed to be sound.

Food & Beverage Available. Large sale ring

For Information or Consignment
Forms Contact:
Don at 610-682-2001

Fees:
Horse \$10.00 Consignment
\$10.00 No Sale
5% commission
Tack 20% Commission
10% Saddle Commission



Skyline Stables always has horses for sale. You can check them out at:

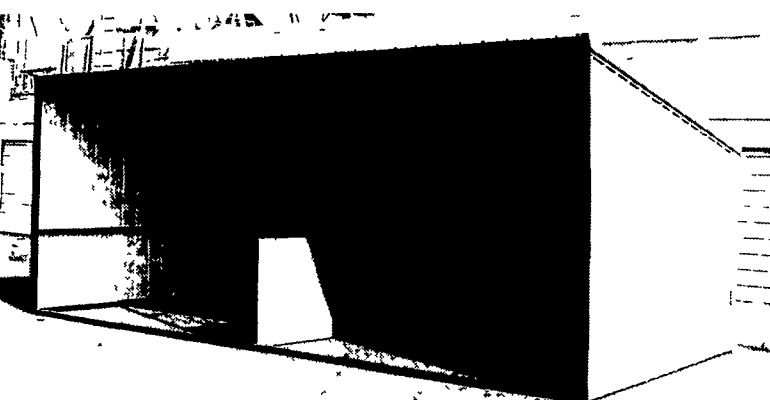
WWW.SKYLINESTABLES.COM

While you are here visit our fully stocked Tack Store. We offer Trail riding, Lessons, Summer Camp programs and a wide variety of Equine activities for all ages!

John Reegan AU003156-L

HORSE SHEDS

Calf Sheds, Free Range Poultry Shelter, Storage Sheds



- * 12' x 12', 12' x 24', 12' x 36' Sizes Available
- * Rugged welded heavy gauge steel unitized construction
- * No exposed wood framing for horses to chew
- * Delivered ready to use
- * Do it yourself kits available
- * Will custom build to your specifications
- * Options: tack room, windows, kick board, stainless steel base

COUNTRY BOY MFG.

1601 King St Lebanon, PA 17042

800-584-3601

Web Site: www.countryboymfg.com
CNC punching and plasma cutting up to 1/2" plate
Design and fabrication of your steel, stainless or aluminum products

HORSE BEDDING • MULCH

- **Granular Paper:** bedding dust free, more absorbent, reduces volume & labor. 50 lb bag \$3.75 or bulk. Ask about our money back trial
- **Baled Shavings:** Kiln dried, screened low dust Pine. 3.25 cu ft paper wrapped bales \$4.25 ea.

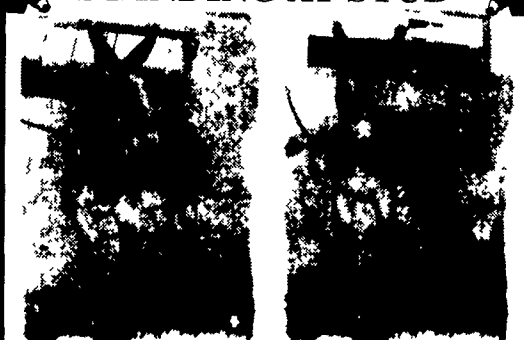


Mulch - Natus blend \$15 Yd. Premium bark \$21 Yd. Colored mulch - 1/2", brown & colonial red \$23 Yd. Soil - Mountain State - 1/2" - 1" top soil \$22 Yd.

Agri Marketing, Inc

190 Teater Mountain Road, Reinholds PA 17569
Northern Lancaster County just off Route 897
1/4 mile north of Blainesport - Look for signs
HOURS: Mon-Fri 7 AM-6 PM Sat 7 AM-Noon
717-335-0379 - WE DELIVER
www.usagypsum.com

STANDING AT STUD



Big Vernon, 6yrs old, 15 2H, proven sire for big blonde coils w/white mane & tails
Big Rock, 3 yr old, 16 1H.

MULES FOR SALE

For Trucking Call Wilmer E Horst 717/354-9816 or Nathan Stoltzfus 610/286-5080
Also Farm Broke Mules 3 to 6 years old

Ivan K. Stoltzfus

199 Shirktown Road, Narvon, PA 17555
717/445-5956 Ask for Ivan

Team of 3 yr old Belgian geldings, broke, approx. 18H, need work. \$3600. 330/895-2268

Sundowner 1999 goose-neck horse trailer, 2-horse straight load, dressing room, saddle racks, loading lights, rear ramp, rubber mats, nice, \$9,800. 610-346-8107, 610-346-9411

1975 Shoop 2-horse thbo size bumper pull trailer, new floor, new hitch, new brakes, new tires, needs paint. Call 717-259-5814.

FOR RENT: 8 Acre fenced horse pasture. Spring fed stream. Loading corral. Beautiful setting between Lititz & Manheim. \$175/mon, 12 month lease. For info write to: PO Box 171, Lititz, PA, 17543.

9 y/o Chestnut saddlebred, family broke, traffic safe & sound, 16.1H, holds hard at times, \$2850. Joseph Glick, 1751 Div Hwy, Ephrata, PA 17522. 717-556-2774

6 & 8 yo black mules, safe & sound for children & farm machinery, Amos L Beller, 173 Lope Rd, Quarryville, Pa 17566. evenings

5 yo Standardbred solid trotter, white markings, traffic safe & sound, very willing, ready for the road. 717-656-4763 call after 6:30pm

Mules--choice of 3 pr: 1st pr 4 & 5 yr olds, good lines, tandem hitch. 2nd pr 3 & 4 yr olds, green broke. 3rd pr 4 & 5 yr olds. 610-593-7177.

Belgian/Morgan mare, 4yrs old, 16H, drives & rides. Green but willing, needs experienced horse handler. Custom harness & cart included, \$3,200 for all. 908-637-8441

3 yo Black Reg Saddlebred mare, good bloodlines, broke to ride & drive, 717-862-3990

Gaited Mountain horses for sale. Mt pleasure, KY Mt, Rocky Mt & The new Spotted Mt selected for gait, disposition & color. www.inthorseequip.com Spotted Fever Farm, 717-582-7831

Standing @ Stud, Reg black Arabian, great personality. Stud fee \$600. Mare care \$8/day. Call Lisa 410-452-0901 for info

Notice-Wool Pull in East Earl. Wool prices are on the rise. 717-445-5750

Pgymy/dwarf goats, 2F, 1M, cute black & white. \$150 takes all, 610-925-3325

Reg Nubian herd, Ex proven buck, 8 milking does, 1yrig doe, 15 kids. Will sell individually or special price for herd. Portable milking equip, SS buckets & many supplies. Franklin Co, Pa. 717-369-4705

Do 'ewe' want sheep? We are downsizing our Border Leicester flock. Fab fleeces. Ramble over to the phone call 610-756-6689.

Dorper Hair Sheep, meat sheep for the 21st century. For information 717-528-4805, dmflletcher@supernet.com or visit Dorper web site @ www.dorperamerica.org.

Dorper hair sheep, 2 full blood ram lambs, \$1,200/ea, (2) 50% Dorper St Corix X ram lambs, \$200/ea. Also full bred Boer billy, 1 yo, \$200. 717-528-4805.

Reg Miniature South-down rams, 2-black, avail July. \$450 ea/obo. Lehigh Co, Pa. 610-298-3108

Jacob's lambs, 2 ewes, 1 ram, not reg, \$125 ea. 610-967-2964

Saanem goats, yearlings & older. Also 1 Saanem buck, 1 boar buck, good milk lines, prices vary. 717-838-4610

Easy entry pony & horse carts, alum wheels w/ balloon tires or wooden wheels. Amos M Stoltzfus, 101 Springhead Rd, Gap, PA, 17527, 717-768-8909.

8 yr old Hackney pony, broke to drive, 51" tall. Amos M Stoltzfus, 101 Springhead Rd, Gap, PA, 17527. 717-768-8909.

10 yr old reg Morgan stallion, rides & drives, (2) 2 yo Morgan mares, halter broke, 12 yo Belgian mare, lots of snap. 717-492-0208.

NEED A REAL HORSE AT A REAL PRICE, call 717-776-6349. All kinds, drivers, some ready for miles, 2 wk guarantee.

Complete Dispersal

Selling over 300 Boer x Spanish x Alpine Goats, most with kids at side. Great opportunity to start in the goat business or increase your herd with good goats.

Call Ed

800/924-8613, 410/935-5100

SHEEPMAN SUPPLY CO.

6302 Liberty Rd.
P.O. Box 21702
Riverside, MD 21202
Phone: 800-331-9122
301-267-4197
Fax: 410-662-0361

Robert D. Dinsmore
www.sheepman.com

9 HORSES AND MULES

Beautiful painted pony, 4 y.o. Sch. Cty, \$600/OBO 570-425-2548.

Small size Beginners team of Draft mares. 1 pair of sorrel Belgians. 1 pair of blacks. Both are very well broke & quiet. Erin C.Lundy 315-493-1051

MUST SELL 6 y.o. Haflinger Gelding, rides/drives, single/double, MAKE OFFER. 610-682-2692.

Smooth mouth Percheron Mare, good brood mare, \$650. Leave message 717-548-8947

Percheron team, 18H, 6 y.o, fancy dapple grey geldings, farm broke, ride, \$6,500. 814-694-2337.

Antique wood wheel box wagon, exc. cond. \$1,300. 814-694-2337.

EASTERN STUD RAM

62nd Annual



FRIDAY & SATURDAY, JUNE 13 & 14, 2003
AUGUSTA EXPOLAND, STAUNTON, VIRGINIA

Selling over 400 head of Dorsets, Hampshires, Suffolks, Southdowns, Registered and Unregistered Wether Sires & Dams and Club Lambs.

For a FREE SALE CATALOG contact: BANNER SALE MANAGEMENT SERVICE, P.O. BOX 500, CUBA, IL 61427, (309) 785-5058