

4-H HAPPENINGS

Cumberland Co. 4-H Club Learns About Feeds And Grains

The Cumberland County 4-H Club met April 17 to broaden their horizons on the types and kinds of small grains and hays they feed to their cattle.

County Agent Duane Duncan was present to conduct the session. All members were able to complete a worksheet on identifying all the feeds on their own. They then worked as a large group to find the correct answers and learn why the dairy cow needs each and every kind of feed.

Vice President Melissa Detman called the meeting to order at the Second Presbyterian Church, April 14, in place of president Brian Nailor. Holly Lemming led us in the Pledge of Allegiance and Janel Zinn led us in the 4-H

Pledge. Everyone answered roll call with the number of animals we plan to place in 4-H this year. Tori Fuller read the minutes which were approved as read, and Gregg Hammond gave the treasure's report.

Under old business John Ocker brought to our attention that the Shippensburg Fair will not be supplying peanut hulls for our use, and we still cannot use sawdust to make beds with. We need to plan accordingly. He also informed us of how the District show and county round-up will be ran this year. The round-up is shortened to one night and will show the very next morning.

Under new business Robert, Janel, and Sarah reported on the last two Tractor Supply Fundraisers; Melissa Detman told about the dairy club activities; Robert and Clayton Weber re-

ported on the Spring judging contest; Tori Fuller reported on her trip to the New York Spring Show; and Scott Walton reported on his trip to the Pennsylvania Spring Show.

Holly Lemming gave us the county council report and reminded us of their upcoming events.

John Ocker had some ending comments on the officer training, he suggested that everyone go even if they're not an officer. He informed us of the Nelle's Surfline fundraiser that on all your purchases they will donate 1 percent of it to the county 4-H. He also noted that anyone interested in dairy judging should see him so he can let Galen Smith know of anyone interested. He also reported that the judging team will go to state days during July 29-31.

Susquehanna County Green Grove Community 4-H Club

The Green Grove 4-H Club recently conducted its annual re-organizational meeting at the 4-H Room in the home of Rev. and Mrs. John Sherman.

Membership applications were processed, elections held and the program for the coming summer was reviewed. More than 50 people were present for the first business meeting of the year. There were 29 of the 39 enrolled members present, 13 leaders and 9 parents and siblings. Other parents also stopped by.

Officers for the new year include, Fernanda Rodriguez, president; Robert Powers III, vice-president; Julie Canfield, secretary; Ruben Rodriguez, treasurer.

The organizational leader, John Sherman, announced that the club was in need of new sources of finances for the current year. Leader Cassandra Madden, of Starrucca, asked to address the membership. She told of the fund drive that she and others had engaged in, the bake sale, and donations received. She then presented the proceeds — \$770 — to Mr. Sherman for use by the club.

Most of the club had known about the fund drive, but all had kept it a secret from Mr. Sherman. Special thanks were given

to those who worked to make it possible.

Snacks for the meeting were provided by Mrs. Deborah Suchnick.

The Green Grove 4-H Club is located on Route 374 between Glenwood and Lenoxville, next to the Green Grove Pilgrim Holiness Church.

Projects offered this year will include, Air Rifle, Air Pistol, Archery, Camping/Hiking, Fishing, Sewing, and Muzzleloading Rifle. Information about the Green Grove 4-H Club may be obtained by calling (570) 222-3389.

Susquehanna County Baconers 4-H Club

A meeting of the Baconers 4-H Club recently took place at the Claverack Building in Montrose.

Walt Dana gave a presentation on how to pick the perfect pig for your 4-H project.

Pig tagging was discussed.

The next meeting will be conducted on May 18 at 2 p.m. at Ann Corbin's home.

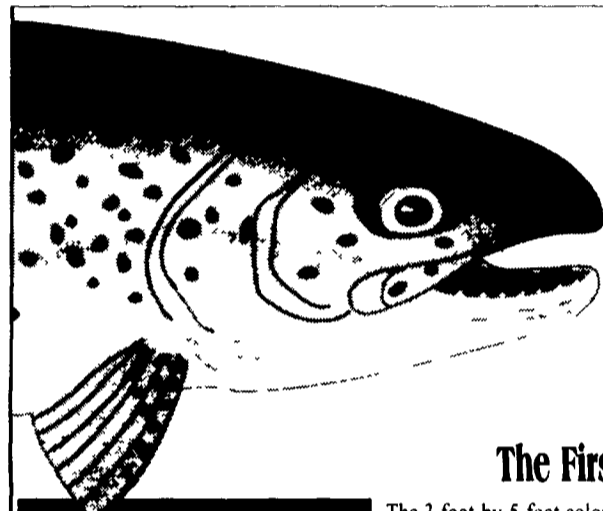
GREAT GIFT IDEA!



Lancaster Farming CAP \$3.50* Each

Available At

Lancaster Farming,
1 East Main St., Ephrata, PA
PLUS Shipping & Handling \$2.50
Add't Cap and Shipping @ \$4.00 Each
Phone 717-626-1164



LOST STREAM MAP

The STREAM MAP OF OHIO resembles another map--known to Pennsylvania anglers as the "Lost Stream Map."

The "Stream Map of Pennsylvania" was completed in 1965 after a 30 year effort by Howard Higbee, a former Penn State Professor.

Professor Higbee succeeded in creating a map of the highest detail possible...a map that shows every stream and lake. He painstakingly plotted by hand, the location of 45,000 miles of streams onto a 3 by 5 foot map.

The map sold extremely well - until it was lost several years later. Incredibly, the printer entrusted with the original drawing and printing plates declared bankruptcy, then carelessly hauled Higbee's 30 years of work to the landfill.

The few remaining dog-eared copies became a prized fisherman's possession. Professor Higbee was offered \$400 for one of his last maps. And state agencies were forced to keep their copies under lock and key.

The experts had always told Professor Higbee that reprints were impossible, because the maps were printed in non-photographic blue.

Then, in 1991, at the age of 91, Howard Higbee's dream came true. Computers made it possible to reprint the map. Holding an updated map, Howard said, "I never thought I'd live to see this day."

Then, by combining Professor Higbee's knowledge with computer technology -- the STREAM MAP OF OHIO was created.

Get Ready for Fishing Season!

Stream Maps

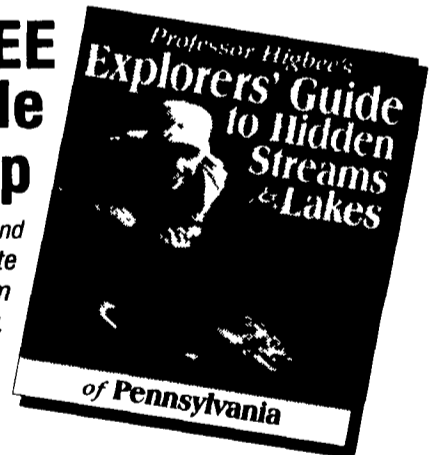
of Pennsylvania, New York
New England, New Jersey, Ohio,
& Maryland/Delaware

The First and Only Highly Detailed Map of Its Kind

The 3-foot-by-5-foot color map shows virtually all of the 45,000 miles of Pennsylvania streams plus lakes. The 3 1/2-foot-by-4 1/2-foot color map shows virtually all of the 65,000 miles of New York streams plus lakes. The 3-foot-by-4-foot color map shows virtually all of the 36,000 miles of New England streams plus lakes. The 2 1/2-foot-by-3-foot color map shows virtually all of the 8,300 miles of New Jersey streams plus lakes. The 3-foot-by-3-foot color map shows virtually all of the 29,000 miles of Ohio streams plus lakes. The 2-foot-by-3 1/2-foot color map shows virtually all of the 12,000 miles of Maryland/Delaware streams plus lakes.

FREE Explorers' Guide with Each Map

Pinpoint the best fishing in PA, NY, NE, NJ, OH and MD/DE with these valuable guides. Easily locate streams and lakes shown on the Stream Map both alphabetically and geographically. Your map and guidebook will take you to the select fishing waters.



RAVE REVIEWS

"It is amazingly detailed and names some creeks in the Mohawk Valley that can't even be found on topographic maps."

—John Pitarres, OBSERVER-DISPATCH, Utica

"If you're looking for the most definitive maps ever created depicting every single creek, river, stream, pond and lake...then 'Professor Higbee's Stream Maps' are without question the finest."

—Howard Brant, THE NEWARK STAR-LEDGER

"It is in showing where to find out-of-the-way trout streams that makes the map such a treasure to the fisherman."

—Joe Gordon, TRIBUNE-DEMOCRAT, Johnstown

ORDER YOUR COLOR STREAM MAPS

Available rolled or folded. ALSO AVAILABLE in heavy gauge LIFETIME GUARANTEED, glass-like clear-lamination, write-on wipe-off surface, with brass eyelets for easy hanging.

PRICES INCLUDE PRIORITY MAIL

| State Stream Map | ROLLED | FOLDED | LAMINATED |
|----------------------|---------|---------|-----------|
| PA 3 FT by 5 FT | \$25 95 | \$25 95 | \$45 95 |
| NY 3 5 FT by 4 5 FT | \$25 95 | \$25 95 | \$45 95 |
| NE 3 FT by 4 FT | \$25 95 | \$25 95 | \$45 95 |
| NJ 2 5 FT by 3 FT | \$25 95 | \$25 95 | \$45 95 |
| OH 3 FT by 3 FT | \$25 95 | \$25 95 | \$45 95 |
| MD/DE 2 FT by 3 5 FT | \$25 95 | \$25 95 | \$45 95 |

Check or money order enclosed \$


Each map includes the FREE Explorers' Guide to Hidden Streams & Lakes. Each rolled and laminated map shipped in a sturdy storage tube.

Name _____
Address _____
City _____ State _____ Zip _____

MAIL TO **LANCASTER FARMING**
Dept. Map

1 East Main St., P.O. Box 609, Ephrata, PA 17522
Payable Check Enclosed Visa Mastercard Discover
Card # _____
Exp Date _____ Signature _____

ENTRY DOORS FROM




Traditionally better doors

Fiberglass or Stainable Steel

- the look of wood, the strength of steel

- Polyurethane core has R-value 13-15
- Heavy duty construction has lots of safety features
- Decorative glass and many other options



265 E. Meadow Valley Rd., Lititz, PA 17543
717-733-7160 • 717-627-6886
1-800-247-2107

Financing Available