

Virginia Livestock Auction Summary

Richmond, Va.
May 19, 2003

Report Supplied By USDA

NORTHERN VIRGINIA LIVESTOCK — Fredericksburg, Front Royal, Marshall, Rockingham, Shenandoah, Staunton and Winchester for May 12-17. All prices per hundred pounds liveweight, except where noted

FEEDER CATTLE: 1,453 head (490 steers, 11 Holstein steers, 592 heifers, 360 bulls).

FEEDER STEERS: Med./Lge. 1: 300-400 lb 90.00-103.00 few 80.00-87.00; 400-500 lb 86.00-99.75; 500-600 lb 80.00-96.00 few as high as 101.00; 600-700 lb 78.50-92.00; 700-800 lb 74.50-77.00; 800-900 lb 76.00. Med./Lge. 2: 300-400 lb 81.50-83.50; 400-500 lb 81.00-87.00; 500-600 lb 82.00-91.00; 600-700 lb 66.00-85.00, 700-800 lb 64.00-66.00. Small 1: 400-500 lb 63.00.

HOLSTEIN STEERS: Med./Lge. 2: 500-700 lb 59.00; 700-900 lb 56.00.

FEEDER HEIFERS: Med./Lge. 1: 200-300 lb 85.00-95.00; 300-400 lb 81.00-93.50 few 72.00-75.50; 400-500 lb 75.00-90.00; 500-600 lb 75.00-89.00; 600-700 lb 69.00-80.00; 700-800 lb 62.50-72.00; 800-900 lb 72.00-73.00. Med./Lge. 2: 300-400 lb 68.00-80.50; 400-500 lb 67.00-85.25; 500-600 lb 64.00-80.00; 600-700 lb 66.00-73.00; 700-800 lb 61.50-62.50; 800-900 lb 64.50-66.00. Small 1: 300-400 lb 63.00-64.00; 400-500 lb 61.00-70.00; 500-600 lb 74.00.

BULLS: Med./Lge. 1: 300-400 lb 86.00-105.50; 400-500 lb 80.50-96.50; 500-600 lb 75.00-92.50; 600-700 lb 70.00-80.00; 700-900 lb 68.00. Med./Lge. 2: 300-400 lb 79.00-91.00; 400-500 lb 72.00-89.00; 500-600 lb 69.00-80.00; 600-700 lb 59.50-74.50; 700-900 lb 56.50-64.00. Small 1: 300-400 lb 76.00; 500-600 lb 55.00-69.00.

SLAUGHTER CATTLE: 469 head (389 cows and 80 bulls).

SLAUGHTER COWS: Breaking Utility and Commercial 2-4, 35.50-48.50; Cut-

ter and Boning Utility 1-3, 23.00-43.00; Canner and Low Cutter 1-2, 34.00-48.75.

SLAUGHTER BULLS: YG 1-2, 900-1300 lb 43.00-57.75 few as high as to 60.00; 1300-1600 lbs 40.75-57.00; 1600 lbs and over 51.25-66.00 few as low as 31.00.

COWS WITH CALVES AT SIDE: 16 pairs. 1000-1300 lbs: Mostly Med./Lge. 1, 7-10 years old with baby to 250 lb calves 500.00-760.00 per pair. 950-1300 lbs: Mostly Med.1, 8-12 years old with 125-200 lb calves, 520.00-840.00 per pair.

BABY CALVES RETURNED TO FARMS: 67 head. Newborn to 4 Weeks 15.00-105.00 per head. Over 100 lbs 40.00-149.00 per cwt.

SHEEP: 264 (182 slaughter lambs, 57 feeder lambs, 25 slaughter ewes). **SLAUGHTER LAMBS:** Spring Woolled: Choice and Prime 1-2, 80-110 lbs 100.25-111.00; 110-125 lbs 102.50-113.00. Good and Choice 1-2, 60-90 lbs 99.00-113.00. Old Crop Woolled: Choice and Prime 1-2, 113 lb 72.00. **FEEDER LAMBS:** Spring Woolled: Med./Lge. 1-2, 40-60 lbs 84.75-90.00; 60-90 lb 88.50 few as high as 109.00; Small/Med. 1-2, 60-90 lb 89.00 few as high as 115.00. **SLAUGHTER EWES:** Choice 2-4, 22.00-28.00; Utility and Good 1-3, 27.00-28.50; Cull and low Utility 1-2, 13.00.

HOGS: 28 head. Barrows and Gilts: US 1-3, 180-200 lb 35.00, 200-250 lb 35.00; US 2-4, 250-300 lb 35.00. Boars: 10.00.

Lynchburg Weekly Graded Feeder Cattle

Richmond, Va.
May 20, 2003

Report Supplied By USDA

Graded Feeder Cattle Sale at Lynchburg, May 19 — **FEEDER CATTLE:** 342 head (139 steers; 203 heifers). Feeder steers and heifers 1.00-2.00 higher. Average weights and average prices in parentheses.

FEEDER STEERS: Med./Lge.1: 14 head, 400-500 lb (472) 98.50-103.50 (102.07); 29 head, 500-600 lb (555) 94.50-95.50 (94.74); 17 head, 600-700 lb (650) 88.75-89.25 (89.08). Med./Lge. 2: 12 head, 400-500 lb (451) 97.00; 18 head, 500-600 lb (555) 87.25-96.25 (94.26).

Med./Lge. 3: 11 head, 400-500 lb (445) 95.00.

FEEDER HEIFERS: Med./Lge. 1: 20 head, 400-500 lb (461) 86.50-87.00 (86.80); 26 head, 500-600 lb (551) 84.75-87.00 (86.57); 11 head, 600-700 lb (639) 78.00-78.50 (78.09). Med./Lge. 2: 49 head, 400-500 lb (456) 85.75-89.25 (88.15); 22 head, 500-600 lb (551) 80.00-87.25 (85.57). Small 1: 17 head, 400-500 lb (445) 82.00-84.00 (82.11).

LYNCHBURG REGULAR WEEKLY AUCTION, May 19 — FEEDER CATTLE: 362 head (59 steers, 14 Holstein steers, 102 heifers, 187 bulls). Feeder bulls 1.00 higher. Prices per hundredweight, based on in weights.

FEEDER BULLS: Med./Lge. 1: 300-400 lb 105.00; 400-500 lb 92.00-100.00; 500-600 lb 86.50-88.00. Med./Lge. 2: 300-400 lb 100.00-108.00; 400-500 lb 81.00-95.50; 500-600 lb 74.50-80.00. Small 1: 300-400 lb 90.00-92.00; 400-500 lb 76.00-91.50; 500-600 lb 75.00.

U.S. Cattle On Feed 4 Percent Lower

Washington, D.C.
May 16, 2003

Report Supplied By NASS/USDA

WASHINGTON, D. C. — Cattle and calves on feed for slaughter market in the United States for feedlots with capacity of 1,000 or more head totaled 10.53 million head on May 1, 2003. The inventory was 4 percent below May 1, 2002 and 6 percent below May 1, 2001.

Placements in feedlots during April totaled 1.87 million, 29 percent above 2002 and 21 percent above 2001. Net placements were 1.81 million.

During April, placements of cattle and calves weighing less than 600 pounds were 296,000, 600-699 pounds were 324,000, 700-799 pounds were 613,000, and 800 pounds and greater were 637,000.

Marketings of fed cattle during April totaled 1.99 million, 1 percent below 2002 but 9 percent above 2001.

Other disappearance totaled 63,000 during April, 24 percent below 2002 and 29 percent below 2001.



122ND MARYLAND STATE FAIR

The 2003 Maryland State Fair is a sure bet for summer food, fun, and celebration. In its 122nd year, the 11-day festival will feature thousands of home arts and agricultural exhibits, daily livestock and horse shows, a wide variety of midway rides and games, and thoroughbred horse racing.

The Maryland State Fair opens Friday, Aug. 22 and runs through Monday, Sept. 1, 10 a.m.-10 p.m. at the Timonium Fairgrounds in Baltimore County. Early risers are welcome to attend livestock and horse shows at 9 a.m., exhibit halls are open from 10 a.m.-10 p.m., and the Midway opens at 10 a.m. on weekends and 12 noon on weekdays. Admission is only \$5 for adults and children under 12 are admitted free. Rides are individually priced. No other event provides so much food, fun, and family entertainment for so little.

Thoroughbred Horse Racing begins Saturday, Aug. 23 with live races daily beginning at 1 p.m., with the exception of Monday, Aug. 25 and Tuesday, Aug. 26 when there will be no live racing. In addition, Timonium will simulcast races all ten days from a variety of other tracks around the country. Admission to the race-track is included in the admission price of the fair.

The Maryland State Fair is a fun and educational resource complete with daily exhibits and presentations that are sure to captivate visitors of all ages. New this year: University of Maryland Agriculture Fair Tours; The Toyota Concert Series featuring three concerts free with paid admission to the Fair by national artists Jars of Clay; The Rock and Roll Army (including Rare Earth, Mitch Ryder, Spencer Davis, and Mark Lindsey) and one of America's favorite country singers (to be announced). Concert dates to be announced and seating is on a first-come, first-served basis.

Back by popular demand: The XTREME Air Ultimate Stunt Show; The Birthing Center where fairgoers have the opportunity to witness the miracle of birth of calves and piglets under the supervision of veterinarians and

veterinarian students; The NASA/FIRST High School Robotics Display and Stack Attack Robotics Competition; and more.

Fairgoers are invited to explore the Farm and Garden, 4-H/Home Arts Buildings, the Cow Palace, Horse Show Ring, and other agricultural buildings and displays as well as the Exhibition Hall. For nature lovers, join the Department of Natural Resources in the State Fair Park for a chance to see native animals (such as owls, snakes, and turtles) at the expanded "Scales and Tales" exhibit and attend mini-presentations on conservation, recreation, stewardship, and the protection of Maryland's natural resources.

The Maryland State Fair is the culmination of over a year's worth of hard work for 4-H members who will compete in shows and demonstrations throughout the 11 days of the Fair. The 4-H Livestock Show will begin Friday, Aug. 22 and run through Sunday, Aug. 24. The 4-H Livestock Sale is on Sunday, Aug. 24 at 7 p.m. A variety of Open Class livestock shows will begin Monday, Aug. 25 and run through Labor Day.

The Midway will provide thrills and chills for the entire family with more than 30 rides. "Kiddie Land" will offer tame but exciting rides, while the Midway promises to thrill even the bravest fairgoers.

In addition, a wide selection of food will satisfy the spirit as well as the palate. Fairgoers will have the opportunity to enjoy the delightful taste of corn dogs and cotton candy on the Midway, or the traditional flavor of crab cakes, mouth-watering sandwiches, corn-on-the-cob, fruit, ice cream, and many other products fresh from Maryland farms at the Maryland Foods Pavilion.

Parking on the fairgrounds for a minimal fee and free parking at the Park and Ride location on Deereco Road are available on a first-come, first-served basis. The fairgrounds encourages use of the Light Rail with an easily accessible Light Rail stop at the Fairgrounds' Cow Palace Gate.

For more information, call (410) 252-0200, ext. 227 or visit the Maryland State Fair Website at www.marylandstatefair.com.

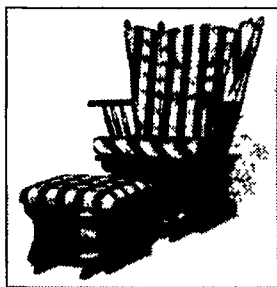
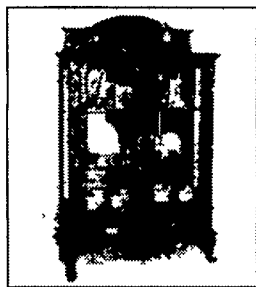
Zimmerman Chair Shop



May 30th & 31st
Friday 8-8 & Saturday 8-3

- SOLID WOOD FURNITURE • EXCELLENT QUALITY •
- REDUCED PRICES •

Chairs, Tables
Rockers, Gliders
Curios & Hutches



ZIMMERMAN CHAIR SHOP

1486 Colebrook Rd., (Rt. 241), Lebanon
Dir.: Rt. 72N, at Sixth Light From Quentin Turn Left
(Colebrook Rd.) 1/2 Mi. To Sale On Right
(717) 273-2706

Cash, Cheque,
Credit Cards
Accepted



Feed it. Feed it. Feed It!

WITH VERMEER XL SERIES BALERS,

you're rolling with heavy gauge steel and heavy-duty shafts/sprockets/chain/bearings/rollers riding on heavy-duty axles high flotation tires free HaySaver wheels, and punching out high density packages with a horizontal feed design that plants the bale directly above the bottom drum for better density and an appetite that just doesn't quit

Get in Gear With Vermeer!

ASK ABOUT 0% APR Up To 48 Mo. (in most cases)



Vermeer
Pella, IA 50219 • 800-370-3659

www.vermeerag.com

SEE YOUR LOCAL VERMEER DEALER

PENNSYLVANIA AVELLA Craig R. Sweger 724-587-5701	KITTANNING Crytzer Equipment Inc 724-543 2441	PEACH BOTTOM Triple H Equip Inc 717-548-3775 800 675-2019	DELAWARE GREENWOOD B&W Ag Enterprises 302 398 3059
BLOOMSBURG WF Welliver 570 437-2430	LIBERTY Bohnert Sales & Service 570-324-2431	PUNKSUTAWNEY London Farm Supply 814-938 7444	WEST VIRGINIA AUGUSTA D & G Equip Sales Inc 304-496-6685
DAMASCUS Rutledge Repair 724-224-4319	MT PLEASANT C.W. Neiderhiser Sales 724-423-4076 800 715 5586	SAXTON Bob Wilkins 814 635-3392	MORGANTOWN King & Sons Equip 304 296 0180
FREEBURG Glenn Bendler 800 774 0796		WYALISING William Beagle 570 749-3439	