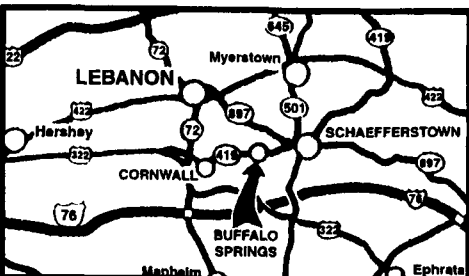


www.kbford.com

Your Internet Connection
SPECIALIZING IN NEW & USED SUPER DUTY PICKUPS

KELLER BROS.

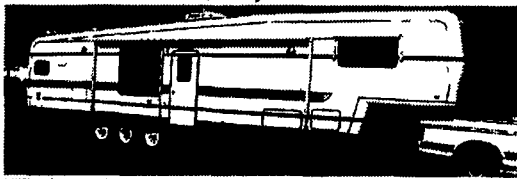
(Buffalo Springs) Lebanon, PA
717-949-2000 or 1-800-363-2767
LEBANON COUNTY'S HEAVY DUTY TRUCK HQTRS.



FAMILY OWNED AND OPERATED FOR OVER 80 YEARS

Over 100 Clean Pre-Owned Vehicles In Stock At All Times!!

1989 - 40 ft. Kountry Air 5th Wheel TRAVEL TRAILER
 2-Slide Outs, Central Air, Gas/Electric, Washer/Dryer Spring Special
\$14,875



2001 DODGE RAM 1500
 Quad Cab, 4x4, SLT, V8, AT, A/C
\$23,995-



2002 CHEV. 2500 EXT. CAB LS 4x4
 6L V8, AT, A/C, PW, PL, P. Seat, Only 12,000 Miles
\$29,595



2001 FORD SPORT TRAC
 4x4 4.0 V6, AT, A/C, PW, PL, 48,000 Miles Alloy Wheels
\$19,900



2001 FORD F350 XL Dump Truck
 5.4 V8, 5-Spd., AM/FM/Stereo Only 7,000 Miles Ready to Work
\$25,900



2001 FORD ESCAPE
 XLS, 4x4, 5-Spd., A/C, PW, PL, CD
Only \$14,595



2002 CHEV. EXPRESS VAN LT
 5.7 V8, AT, A/C, Quad Capt. Seats, DVD, Leather Spring Special
\$20,995



2003 FORD E350 SUPER CARGO VAN
 7.3 Power Stroke Diesel, AT, 5-Passenger, Dual A/C, 9,400 GVW, 4:10 Limited Slip, Cargo Cage, MSRP \$36,010
SALE \$29,937



2003 FORD F350 CREW CAB
 V10, AT, Full Power, 4x4 Cab & Chassis Only.
"SAVE THOUSANDS"



1998 FORD EXPEDITION 4X4 EDDIE BAUER
 V8, A/C, Full Power
\$15,795



2000 FORD F650 BOX TRUCK
 Cat Diesel, AT, 24 Ft. Box, Hyd. Lift, 26,000 GVW, Air Brakes, Only 9,000 Miles
LIKE NEW \$36,775



1995 DODGE RAM 1500 SLT 4x4
 V8, AT, A/C
Only \$9,595



2001 FORD RANGER SUPER CAB EDGE
 V6, AT, A/C, 4x4, CD Player, 33,000 Miles, Very Clean
\$14,929



2003 FORD E550 CUT AWAY CHASSIS
 7.3L Power Stroke Diesel, AT, A/C, PW, P Seats, Chrome Wheels, MSRP \$37,165
NOW \$29,665
 Save \$7,500



2000 FORD F350 CREW CAB DUALLY
 XLT, 7.3 Diesel, 6-Spd., A/C, PW, PL, T.C, CD, Ready To Tow Only 9,000 Miles
\$34,995



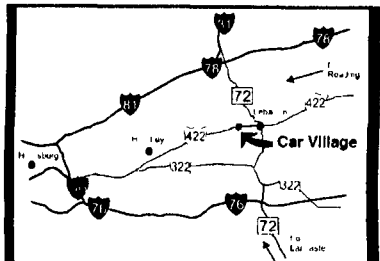
Nicest Trucks In the East • Nicest Trucks In the East • Nicest Trucks In the East • Nicest Trucks In the East • Nicest Trucks In the East • Nicest Trucks In the East

www.useddieseltruck.com

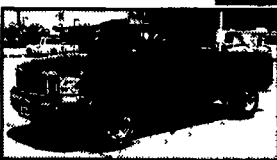
2300 W. CUMBERLAND ST. (Rt. 422)
LEBANON, PA 17042
 (Across From Lebanon Valley Mall)

CAR VILLAGE

1-800-650-1420
717-274-2000



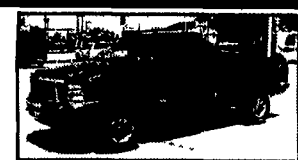
NICE ONE
90 FORD F250 SUPERCAB 4x4
 Local Trade, Very Nice Diesel Power Auto, A/C, Dual Fuel Tanks, Tow Pkg.



2003 FORD F250 PICKUP 4x4
 Only 4,000 Miles. Like New. 5.4 Triton v8 Auto, Loaded XLT, Super Nice



\$9,900
97 DODGE 2500 4x4
 Heavy Duty 3/4 Ton 350 V8, Auto, A/C, Limited Slip Axle. Very Clean Runs Great



1 TON PICKUP
2002 FORD F350
 Gorgeous, Only 21,000 Miles. Powerstroke Turbo Diesel, Auto, A/C, Loaded XLT, 2 Tone Paint, Heavy 9900 GVW



\$13,900
97 FORD F250 SUPER CAB 4x4
 Ready & Waiting for You Powerstroke Turbo Diesel, Auto, A/C



F350 CREWCAB
99 FORD F350 XLT
 Powerstroke Turbo Diesel, Auto, A/C, Tow Pkg., Loaded XLT, 62,000 Miles



\$18,900
1999 CHEVY K2500 4x4
 Only 48,000 Miles, Very Nice Driving Tk, High Output 6.5 Turbo, Diesel, AT, A/C, Limited Slip Axle.



\$17,900
2000 CHEVY 3500 4 DOOR 4x4
 Vortec 350 V8, Auto., A/C, Tow Pkg., Runs & Drives Super Nice



2 BLACK SHORTBED
2000 FORD F250 SUPERCAB 4x4
 Gorgeous - Like New, Only 8,000 Miles, 5.4 Triton V8, Auto, AC, Limited Slip Axle



CUMMINS DIESEL
98 DODGE 2500 QUAD CAB 4x4
 24 Valve Cummins Turbo Diesel, Auto, A/C, Laramie SLT Pkg., 46,000 Miles



6 SPEED SUPERCAB
98 FORD F250 4x4
 One Of The Nicest Anywhere, Only 53,000 Miles, Powerstroke Turbo Diesel, A/C, Captain Chairs, Console, Tow Pkg



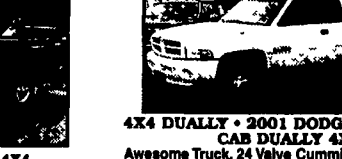
\$23,900
99 FORD F250 SUPER CAB 4x4
 Short Bed, Nice to Drive, Loaded XLT, Powerstroke Turbo Diesel, Auto, A/C, Tow Pkg., Alloy Wheels, New Service & Insp.



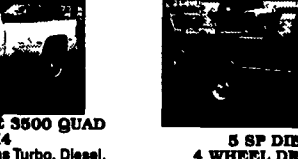
DARK BLUE SHORTBED
2001 Dodge 2500 QUAD CAB 4x4, Short & Sweet, 24 Valve Cummins Turbo Diesel, Auto, AC, Laramie SLT. Only 33,000 Miles, Limited Slip Axle



2000 DODGE 2500 QUAD CAB 4x4
 Local 1 Owner Trade, 360 V8, Auto., A/C, Loaded, Laramie SLT, Asking \$18,900



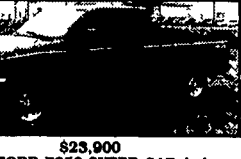
4x4 DUALLY • 2001 DODGE 3500 QUAD CAB DUALLY 4x4
 Awesome Truck, 24 Valve Cummins Turbo, Diesel, 5 Spd., A/C, Comfy, Heated Leather Seats, Keyless Entry, CD Player, Tow Pkg., A Beauty, 60,000 Clean Miles • \$28,900



5 SP DIESEL SUPER CAB 4 WHEEL DRIVE • 98 FORD F250
 Gorgeous Truck Drives New, Powerstroke Diesel, 5 Sp., A/C, Loaded XLT, 8,800 GVW, \$16,900



\$23,900
99 FORD F250 SUPER CAB 4x4
 Short Bed, Nice to Drive, Loaded XLT, Powerstroke Turbo Diesel, Auto, A/C, Tow Pkg., Alloy Wheels, New Service & Insp.



\$23,900
99 FORD F250 SUPER CAB 4x4
 Short Bed, Nice to Drive, Loaded XLT, Powerstroke Turbo Diesel, Auto, A/C, Tow Pkg., Alloy Wheels, New Service & Insp.

FLATBEDS, WORK & DUMP TRUCKS



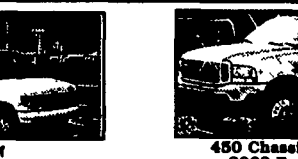
DIESEL CARGO VAN
2001 FORD E350 HI-TOP CARGO VAN
 Very Clean Inside & Out, Powerstroke, Auto., A/C, Heavy 9,400 GVW, Only 40,000 Miles, Remaining New Tk. Warranty



4x4 RACK BODY
99 GMC 3500
 You've Been Looking For This One. High Output 6.5 Turbo Diesel Auto, A/C, Tow Pkg., Only 40,000 Mi.



17 FOOT CUBE VAN
97 FORD E-450 SUPER DUTY
 Heavy 14,000 GVW, Rear Lift Gate, Powerstroke Turbo Diesel, Auto, AC, Local Trade, Only 68,000 Actual Miles



450 Chassis 4 Wheel Drive
2002 Ford Super Duty
 Only 5,000 Miles, Remaining New Ford Warranty, Powerstroke Diesel, AT, AC



16 FOOT BOX
1999 FORD 550 SUPER DUTY
 THE ONE TO HAVE
 Heavy 19,000 GVW Powerstroke Turbo Diesel, Auto, A/C, Vinyl Bench Seat, New Service & Insp Will Sell As Chassis.



4x4 DUMP • 2000 DODGE 3500
 Very Nice, Local 1 Owner, Cummins Turbo Diesel, AT, A/C, Tool Box, Tow Pkg., Chrome Wheels, A Real Good Looker, Only 43,000 Miles



DIESEL MOBILE WORKSTATION
99 FORD E-350 HI-TOP CARGO VAN
 AT, A/C & Roof A/C, Cabinets, Countertop, Electric Outlets, Lights, Generator and More \$17,900



12 FOOT DUMP BODY
2000 FORD SUPER DUTY
 Auto, A/C, Heavy 17,500 GVW. Nice & Clean



12 FOOT RACK BODY
99 FORD F350 SUPERDUTY
 Very Clean, 47,000 Miles, Powerstroke, Turbo Diesel, 6 Sp., A/C, Tow Pkg.



EBY FLATBED
2001 FORD F350 SUPERCAB 4x4
 Nice One. Only 30,000 Miles. Powerstroke Turbo Diesel, 6 Spd., A/C, Loaded XLT, Gooseneck Hitch



CREW CAB DUMP TK. • 2000 FORD 450
 Very Nice, Only 10,000 Miles, Powerstroke Turbo Diesel, Auto, A/C, Alloy Wheels, 3 Yd. Dump Body



CHASSIS CAB
2000 FORD F350
 Waiting For Your Body, 165 Wheel Base, 84" C.A, 12,500 GVW, Powerstroke Turbo Diesel, 6 Spd., A/C, Great Price \$16,900



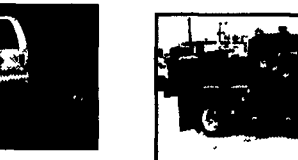
GRAIN BODY
2003 CHEVY 4500
 12 Foot Body, Solid Sides, 16,000 GVW Duramax Diesel, Allison Auto, Pentil Hitch, Remaining New Tk Warranty Only 2,700 Miles \$33,900



550 RACK BODY
2000 FORD SUPER DUTY
 12 Foot Dump Body, Only 58,000 Miles, Triton v10 Auto, A/C, Heavy 17,500 GVW. Nice & Clean



350 4 DOOR CHASSIS, 4 WHEEL DRIVE, 2001 FORD XLT
 Waiting for your body, Only 19,000 Miles. Powerstroke Auto, A/C, Heavy, 11,500 GVW. Dual Ram Wheels.



CREW CAB DUMP TK. • 2000 FORD 450
 Very Nice, Only 10,000 Miles, Powerstroke Turbo Diesel, Auto, A/C, Alloy Wheels, 3 Yd. Dump Body



ROLLBACKS - WE GOT 'EM
90 Ford 550,
98 IH 4700,
95 Ford 450



ROLLBACKS - WE GOT 'EM
90 Ford 550,
98 IH 4700,
95 Ford 450

Nicest Trucks In the East • Nicest Trucks In the East • Nicest Trucks In the East • Nicest Trucks In the East • Nicest Trucks In the East • Nicest Trucks In the East