

35 TRUCKS AND TRAILERS

1971 U-Model Mack, single axle dump, good truck, \$6500. Call 717-789-3029

2-wheel drive 2002 Chevy S10, extended cab, 11,000 mi, nice shape, \$11,500 neg. 570-799-0514

Chevy C50 2 spd, rear w/6-10 hole budd wheels & tires 8.25X20, Good, \$500. 16ft flat bed w/steel frame & wood floor, good, \$650. 717-548-3737

1999 Collin-Arndt 21ft alum gooseneck 4 slant horse trailer, rear tack, dressing room, fully lined, 12V auto jack, Like new, \$12,500. 717-432-3560

Ford HD pickup \$650. Ford ext-cab, \$650. Farm-all H w/sickle bar mower, exc cond, \$1,350. 215-885-1032, 795-0405.

Stahl 9' drw utility body w/Thieman 1250# hyd liftgate, \$1,500. Leer fiberglass cap for 97-03 F150 rcab long bed, like new, \$475. LanCo, 717-548-4931.

Ford F150 pickup, 1985, runs well, \$1250 sold as is. 410-658-5812

2002 GMC 2500 pickup, only 2500 miles, tow pkg + 5th wheel hitch, \$19,995. 27ft 5th wheel RV, \$9995. 610-857-9640

Mack tractor, 1977 model R 300 5-spd, wet line, good tires, camelback sus., \$3300 OBO. 610/633-0030

1986 GMC cab-over tractor, 892 silver, 430 hp, 9 spd trans, ps, \$2,850 570-784-9192

2002 Ford F650, 13k mi, color white, dual cab, 3126 Cat 7-spd trans, 26k gvwr, 102" w/5th wheel HTC, \$44,900. 717/273-9951 days

1979 Ford L8000, 20' roll-back, 33,000 GVW, good cond, asking \$8,500. Bucks Co, 215-957-9700.

Dana 80 rears & Dana 60 front axles from a 98 Dodge 2500. 410 gears, rear locker, both complete. Buy one or both. \$1,700 for pr/obo. 706-437-0952 or 706-833-2375

1986 Ford F350 utility body, 5-spd, gas, \$6500. 215/357-1940

Storage Trailers 40' & 42', swing & roll doors. 610-948-4344

(2) 1994 377 Petes 1 cat, 1 det, \$11,400. 1997 379 460 cum \$29,800. All 63" bunks. 1981 (3) 59 400 cum, 36" bunks, \$7,750. 1981 IH tri-axle dump (2) 90 cum \$21,000. All good cond ready to run, 570-758-1734

2001 Ravens frameless dump trailer, spread axle w/alum end caps, 76"x102"x41" lift axle, 2-way gate, all Led lights, Shurlock tarp, \$38,000. 717-495-5513 or 717-528-7096

1979 Johnson log trailer 40ft, 1973 Steco 40ft log trailer, \$1,500 ea. 717-867-2995

'00 Dodge 3500 extended window cargo van, 360 auto, PS, PB, dual air, Am-Fm cass., 16,000 miles, white, \$12,900. 717-733-2873

'98 Dodge 1500, Prime Time Conversion Van, 318 auto, PS, PB, PV, PDL, cruise, tilt, dual air, Am-Fm cass., 58,000 miles, new radials, \$10,500. 717-733-2873

'94 Chevy 3500 Daully, 4wd, auto, loaded, 350 Sims boards, ton cover, super clean, 59k miles, \$12,500 obo. 610-380-8770

'03 Ford F250 XLTL, 4x4 ex cab, super duty, 7.3 dsl, 3k miles, loaded, \$31,950 obo. Trades O.K. 717-872-6041, 717-371-1514

F350, 11' utility body, 130k, 460 auto trans, \$1800. 717/898-8826

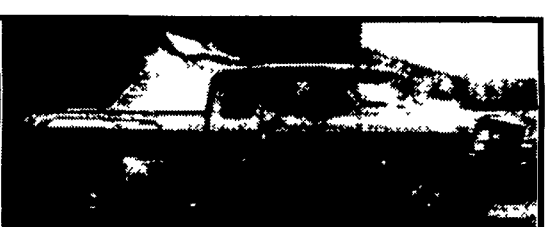
'96 GMC 2500, 4x4, 5.7 V8, auto, extended cab, long bed, matching cap, AC, cruise, power locks, 78k miles, \$11,500 obo. 610-944-4718

Feedmobile (1991) with an Isuzu Turbo Diesel (6BOT) Engine. Unit has a 20" Hammermill, Pneumatic Transfer System and a 13"x30" Roller Mill. The Feedmobile is mounted on a 1991 GMC Topkick with a 3116 Cat Diesel Engine. Asking \$18,500. Call 705-653-4884 and ask for Jeff.



19 1/2 ft. J & J Alum Dump Body, Elec Tarp, Air tailgate, 72" sides, Pump & hoist, G. cond, Reduced \$3,500. 717-436-5454

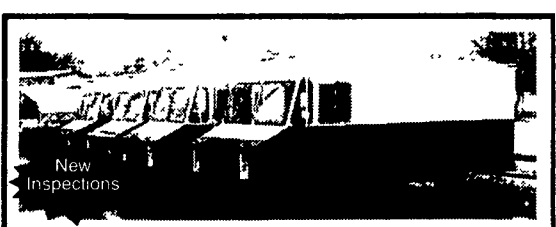
1982 Autocar cc, 3208 cat, 10 spd RR, 4wd, 18,000 orig miles, \$5,000. (3) 1988 GMC 70 series, v-8 detroit, 18 & 20ft flat dumps, \$2,900 ea. 1988 Chevy 30 series, 454 auto, 12ft stake body, \$2,500. 1986 IH S1900, DT 466, 5 & 2, 18ft flat dump, \$2,900. Knuckboom w/hyd outriggers. \$1,900. 724-493-6094 • 724-872-4580



1992 Ford 4x4 dually supercab, Testerosa Conversion, 7.3L Banks Turbo Diesel, 5 spd, loaded, single sleeper, excellent condition, 56K miles, \$13,000. Call Jeff 301-334-0551 or 301-616-0935 (day)

2000 Model UD 2300 LP 225hp Turbo/Inter Cooled Diesel, 23000 GVW, 6 speed Transmission, 165.6" Wheelbase w/19.5 tires, A/C, Pioneer Stereo, 15' Eby Aluminum bed w/bulkhead & Gooseneck ball. Mid-Atlantic AgriSystems 717-529-2782

Stepvans - All Aluminum, 10 ft. to 16 ft. Single Rear and Dual Rear Wheels, Aluminum & Manual Transmissions, 4 Cyl. & 8 Cylinder Diesels, 1 350 Gas, Service Records for Most. Many to Choose from... Starting at \$3,000.00 Call 717-632-9600 or 717-633-5789 Meadowbrook Auto Sales



Diesel Owners! Get HP & Fuel Mileage

We Have Performance Chips For The Following:

Dodge Cummins	40-120 HP + 175 Ft. lbs. More Torque
Chevy Duramax	70-210 more HP up to over 400 lbs. of Torque
Ford Powerstroke	60 - 80 - 120 add more HP up to 200 lbs. of Torque
VW TD	35 more HP add up to 35 + 45 lbs. of Torque

Free Installation 2003 Performance Chips & Exhaust are here & in stock

We carry complete line 4" exhaust systems for..... \$550
*Torque Converters *Valve Bodies *Exhaust Brakes *Gauges *K&N Air Filters

You Get More Horsepower & Torque
We Carry The Best Stuff For Your Truck Propane For Diesel - Nitrus For Diesel
(717) 249-2255 Call Now!!! Ask for Shawn

Better Fuel Mileage

LOVE'S AUTO SALES INC.
1970 Spring Road, Carlisle, PA 17013
Sales, Service & Inspection

WM. COHEN & SONS, INC.

"THE TRUCK PARTS STORE"
HEAVY DUTY TRUCK PARTS - NEW & USED - REBUILT REARS & TRANSMISSIONS
610-269-1298 Fax 610-269-0787 www.cohentruckparts.com

1990 GMC 7000 DT-506
Detroit 8.2 Diesel, 5 Speed, 2 Speed Rear, 7,000 Lbs., 19,000 Lbs Rear, Hydraulic Brakes, Salt Spreader, 12 Ft. Angle Plow

Michigan Loader Model L30
Quick Coupler, Comes With 1 Yard Bucket and 60" Forks, Runs Excellent

(9) 40' - 45' 1970's & Newer Steel Flatbed Trailers (also have drop deck trailers) some have sliding tandems, all in good condition \$2,500/Ea and Up

Kalmar Forklift, Propane Powered,
4435 lb capacity, 42" forks, 192" lift, cushion tires, 2194 hours

Aluminum Tanker/Trailers
7500 gal and up

1989 GMC Kodiak, 3208T Cat Engine
5 Speed, 2 Speed, 4 Door Cab, P/S, 167" wheel base, 35,000 lb GVW 108,614 miles, 10x20 tires, hydraulic brakes, ball hitch setup for gooseneck trailer

ATTENTION TRUCKERS and MECHANICS!
Are You Getting The Best PTO At The Very Best Price? Compare

PTO
Power Transmission Options Inc.
to what you are now using!

- Cast iron output flange w/heavy duty double lip seal, reinforced heavy duty studs and Nyloc nuts. Supports heavier hanging pump weight.
- Higher torque spur gears.
- Larger output load bearing and larger diameter output shaft.
- Heavy duty cast iron housing with all tapered roller bearings. Lower profile.

Beiler Hydraulics, Inc.
HYDRAULICS • PNEUMATICS • POWER TRANSMISSIONS
322 East Main St. • Leola, PA 17540 • 717-656-4878 • Fax: 717-656-4682