

**32A ANTIQUES**

Antique secretary bookcase, excellent condition, \$800. 570/683-5341

Case iron claw foot tub, \$200. Call 717/272-8211

**33 RECREATIONAL VEHICLES**

2001 Polaris Trailblazer 2x4, exc. cond., \$2900. 717/821-0767

E-Z Go Golf cart, elect w/new batteries, P/charger, ex cond. 717-792-0933 after 5pm

**34 AUTOS**

'93 Ford Tempo, 4dr, V6 auto, PS, PB, cruise, tilt, air, 80,000 miles, black, \$1,800. 717-733-2873

'95 Chevy Lumina, 4 dr, V6, auto, PS, PB, air, Am-

Fm cass, 52,000 one owner miles, black, \$4,700. 717-733-2873

**35 TRUCKS AND TRAILERS**

45' & 48' van storage trailers for sale. 717-397-7695.

1983 Ford F600, scissors lift/dump truck, new tires & paint, 65,000 mi. \$6,500. 4 4 3 - 5 0 6 - 7 5 8 7 .

1990 GMC 1500 SLX 4x4 Suburban, 350 auto., PS, PB, AC, CB radio, trailer hitch, running boards, exc. body & tires, well maintained, \$5900. 570/286-6060 after 6pm

1983 International grain truck, 16' bed, hydraulic tailgate with grain chute, new inspection, excellent farm truck. 717-665-7029

1987 Ford F700, 23,000 gvw, 18' box, elect. lift gate, good condition, 6.6 dsl, auto., no CDL req., \$5500. 814/935-2211

'91 Ford F350, 12ft refrigerated body, Thermo King unit, ex cond. 717-656-7965

2000 & 1996 Freightline tri-axle dump trucks, 17.5ft J&J heated body, all alum wheels, both MD certified. 717-624-7259

'88 Chevy S10, 4x4, 86k miles, 4.3, V6, auto trans, good cond, \$3250 obo. 717-336-5580

1979 Fruehauf tanker, 4 compartments, 9200 gal. current annual & 5 yr. test, currently hauling petroleum, excellent condition, \$13,500. 717-226-2618

2 box trailers 28', \$1000 each. 717/235-2618

6x8 insulated box trailer w/propane Honda engine, like new, 1 yr old. 717-768-7951

Clean dependable strong 1978 Int. Paystar 5000 tri-axle log truck w/1982 Prentice 120 loader, 555,000 mi, 350 Cummins big cam, Rockwell rears, Hendrickson rubber block susp., 13-spd trans., asking \$15,000; 1979 Haultette tri-axle equip. trailer, 9-ton, asking \$1500. 717/436-8376, 717/994-2223

93 gooseneck open stock horse trailer, new floor, 17', good cond., \$3000. 570-837-1814

1994 Mack CL613 E9/500, 18-spd, air ride, 24.5 alum., 60" mid rise bunk (can remove), exc. cond., recent engine work, \$20,000. 570-549-5572 eves.

1992 Ford F350 dsl 5-spd, oil power, w/Eby 12x8x6 alum. custom cattle body, 55k, 1-owner, garage kept A-1, \$13,750. 908/782-4297

Dump Bed, 19 1/2' alum J&J body w/holst, 3 way gate w/air, electric tarp, exc cond, \$5,500 obo. 434-985-8725.

1981 R model Mack, 688 ST, 350, 9 spd, 30,000 miles on out-of frame rebuilt, wetline, double frame, good strong truck, \$8500. Ravens 3-tier 40ft log trailer, \$5000. 717-768-8647 eves, 717-203-4461 days

'99 Chevy Cheyenne 2500, 2WD, 350 auto, PS, PB, cruise, tilt, air, 8,600 GVW, towing package, 62,000 one owner miles, excellent condition, \$10,900. 717-733-2873

89 Ford Aeromax, 315 cummins, 9spd, 513,000 mi, wetline, lake, air-ride, \$3,800. 42ft storage tri reefer w/roll-up door, \$800. 717-233-1329

85 3/4 ton PU w/ Mortsville tool boxes, needs eng. & tr., \$375; 86 3/4 ton PU needs trans, \$150. 215-886-5000

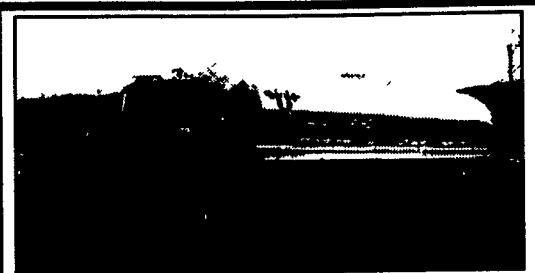
1990 MAC Tri-axle dump truck, 19' alum body, exc. cond. 717-734-3761.

1978 Chevy C60 truck w/ 1600 gal tank, 717-485-3363

**KEYSTONE TARPS SERVICE & SALES**  
Is A Manufacturer Of Custom Tarps

- Systems
- Load Straps
- Tarps
- Gloves
- Storage Covers
- Used Railroad Ties

1-800-798-TARP (8277)  
FAX 570-435-0036 570-435-0752



**1977 Mack w/Stainless Steel 10 Wheeler . . . Call for details! 717-438-3354**



**Day cab, Freightliner, 1984, big cam Cummins, 9 spd., tandem, spring, nice reliable truck. \$5,750 570/546-5574**



**FOR SALE 1990 Ford F Super Duty Diesel, AT, steel & wood flatbed, receiver hitch, 14500 GVW \$5,500**

**Call 717-272-3225 Ask for Glenn**



**1988 Western Star Manure Spreader Truck, NTC 400 HP Cummins eng, 6 speed Allison trans, 2 speed, 46,000 lb rears, 46,000 lb Hend spring, 18,000 lb steering, dual 445/65/22 5 drive tires, single 445/65/22 5 steering tires 4800 gallon vac/press tank, 900 CFM pump, 2-8" loading valves, 10" side loading boom, 8" side spreading and 8" rear spreading valves, 4 Sunflower injector units (new 9-02) Overall width is 10 ft 7,401 hours and 131,443 miles \$48,000 with injectors, \$42,000 without injectors, 717-738-1066**



**Must Sell! 1998 Dodge, Diesel, Dually, 55,000 Miles, Centurion Package, Loaded, All New Tires, Quad Cab, Exc. Cond., Custom Bed, Alumline w/gooseneck hookup Will sell custom bed separately. \$18,900**

**(484) 256-1201**

**\$16,500**

**One Owner: 1999 Freightliner Iron cdll 25999 gvw, 26 ft van, translucent roof, 3126 Cat eng, 210 hp, 5 speed, air conditioning, excellent condition, new PA insp, fully serviced & tune up 570-467-0400**

**Isuzu, 1988, 5 spd., 12 ft. van, runs well \$4,000 570/546-5574**

**91 International DT466 in good condition, hydraulic brakes, many new parts, 295k Miles. \$8,500 OBO 410-984-3965 Westminister, MD.**

**FOR SALE 1999 GMC - SLE 3500 4x4 Dually- Crew Cab 454 ci Big Block/7.4 Liter Engine, 186k miles Automatic, AC, Cloth interior \$ 10,500 Call Paul at (717) 354-2613**

**Compare RETRIEVER**

**Now with a 20' bed!**

*\*patent pending*

**Only Retriever has all these features in its class!**

- Low profile, air suspension medium duty chassis
- Curved and hinged bed creates extremely low approach angles
- Simple, economical air operation (no hydraulics)
- 13,000-lb payload with less than 26,000-lb GVW
- Also in 10-ton capacity for 33,000-lb GVW chassis

**No CDL required in most states!**

**'03 Int. 466 Diesel, Auto Trans. . . \$56,000 Will Trade**

**UP-N-ATOM, Inc.**  
CREATIVE SOLUTIONS TO COMPLEX PROBLEMS  
www.upnatominc.com  
**Distributed by Curry Supply Company 800-345-2829**  
Call for demonstration video!

**ALL STEEL REPLACEMENT TRUCK BED**

8 1/2' Lx82" W  
9' Lx8' W,  
10' Lx8' W or 12' Lx8' W

**Underbody Tool Boxes Available**

**UTILITY TRAILER 4'x8' Tilt \$495**

4'x8', 5'x8', 5'x10' 2000# GVW  
5'x10', 6'5" x12', 3000# GVW

**LANDSCAPER**

16'x77", 18'x77", 7,000# GVW

**ALSO 84" WIDE!**

**CAR HAULER 16'x78" & 18'x78" includes 5' Beavertail 7,000 lb. GVW 4' self storing ramps**

**Quality Trailers Built Locally By "PA International"**

**Car Dollie \$795**

**Roto Tillers**

4ft \$1,250	5ft \$1,295	6ft \$1,395
-------------	-------------	-------------

**Finish Mowers**

5ft \$995	6ft \$1,095	91" \$1,395
-----------	-------------	-------------

**Rotary Mowers**

4ft. \$585	5ft \$595	6ft. \$695
------------	-----------	------------

3pt. Fertilizer Spreader . . \$329

Pull Type Fertilizer Spreader . . \$595

**Pull Hay Tedders**

9ft. \$1,295	17ft. \$2,695
--------------	---------------

19 Ft. Hydraulic, Tilt Trailer, 10,000 lb. GVW \$3,495

ATV Hauler, 3000 lb GVW, 7'x10'. \$1,095 7'x12' \$1,195

**Over 200 Trailers IN STOCK Starting At \$495.00 T-Plates DEALERS WANTED**

**HIGHWAY HYDRAULIC DUMP BRI-MAR**

**FREE BATTERY**

5'x8' 3,000#	\$2,295	6'x10' 10,000#	\$3,395
5'x8' 5,000#	\$2,595	7'x12' 10,000#	\$4,195
6'x10' 7,000#	\$3,095		

**LOW PROFILE DUMP TRAILERS BRI-MAR**

**Other Sizes Available**

6'x12' 10,000#	\$4,395
6'x10' GVW	
7,000#	\$3,595
10,000#	\$3,995

**FREE BATTERY**

**GOOSENECK SIZES: w/4' Adj. Tall**

20'x8' 12 or 15,000 GVW  
24'x8' 15,000# GVW

**Low Profile Construction**

16'x77" & 18'x77"	10,000# GVW	\$3,395
20'x8' w/Tall	10,000# GVW	\$3,995
20'x8' w/Tall	12,000# GVW	\$3,795

**DECK-OVER CONSTRUCTION**

www.kutzfarm.com