

MAILBOX MARKETS WANTED

Used three point post hole digger, lighter type preferred. York Co. 717-266-4465.

Van, station wagon, hatchback, suburban or other sm. to med. car or PU, need not be fancy. Lanc. Co. 717-575-0754.

Lanterns made by Steam Gauge & Lantern Co. "SG&L"; also pit saw in gd. cond. After 8 p.m. Adams Co. 717-624-2618.

Farmall 1456 or 1256 with bad motor. Somerset Co. 814-629-9625.

Pair of steel front wheels for Farmall 460 call or write to with price 185 Windmill Ln. Hooversville PA 15936.

Propane refrigerator w/ freezer, gd. cond. Lanc. Co. 717-665-7470.

Wanted: Left complete glass door for JCB 1400B backhoe, call w/price & cond. Leave msg. Thanks. North'd Co. 570-672-3862.

Looking for 1956 Case 300 narrow front end. Please leave ph. # if no answer. Frank. Co. 717-375-4802.

Wanted: Wheel assembly for JD 7" hay head. For Sale: 5' 3ph Lely PTO rototiller, \$400; IH grain cart, \$300. Lanc. Co. 717-626-0034.

Rokon motorcycle, any model or cond., does not need to be running. Cumb. Co. 717-245-9583.

MAILBOX MARKETS NOTICE

Menges Mills Steam Show. York Co. 4-H center, July 19 & 20, flea market, crafts, tractors, engines, antiques. Free admission. York Co. 717-235-1104.

2 pole barns and barn for storage, lots of room for trailers Oxford area. Chester Co. 717-529-6309.

Public sale: May 24, Antiques, guns, fishing equip., post cards, glassware. Rawlinsville 9 a.m. Lanc. Co. Sanford H. Landis, 219 Cats Back Rd., Ephrata, PA 17522.

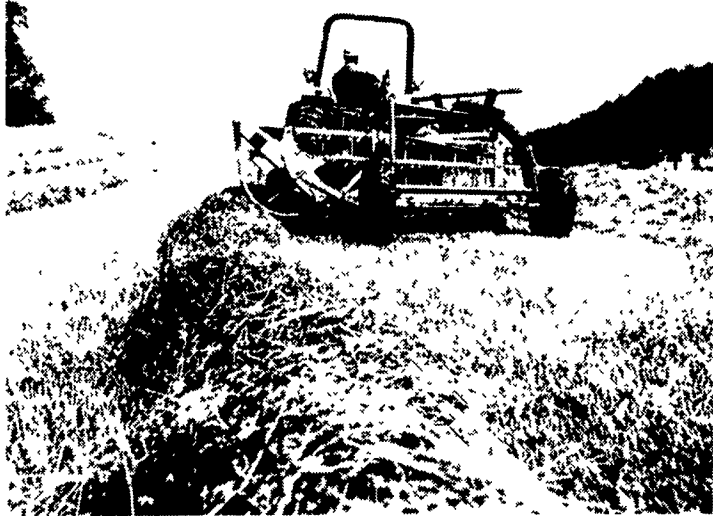
Latimore Valley gas steam show fair June 20-22 2003 8 mile south of Dillsburg Pa. along old Rt. 15. Adams Co. 717-292-2210.

Auction Monday, June 2, 1800's stone & log home, barn, 4.5 M/L acres, 5646 Umbletown Rd., Gap. AU314L Lanc. Co. 717-442-4279.

Reduce chemical rates successfully by using FFP vegetable oil with mules for sale 3 yr old, cultivator Oregon AG Lanc. Co. 717-656-0067.

Pride Susquehanna Riverboat. Spring has sprung, all is fun in the sun. History flows along river banks. All Aboard! Dauphin Co. 717-234-6500.

Eighteenth show, June 6-8, 2003. Antique eng, tractor & toy club, Bowlers Park, PA, S. of Kutztown. Displays, flea market. Berks Co. 610-767-4768.



Rolabar® rakes better by far -

Don't settle for second best when it comes to rakes. Choose the original - a dependable New Holland Rolabar® rake. The rake more farmers buy over all other brands combined. Why? Because its rugged construction makes it one hard-working, hay-grabbing machine.

See the original Rolabar rake today.



NEW HOLLAND

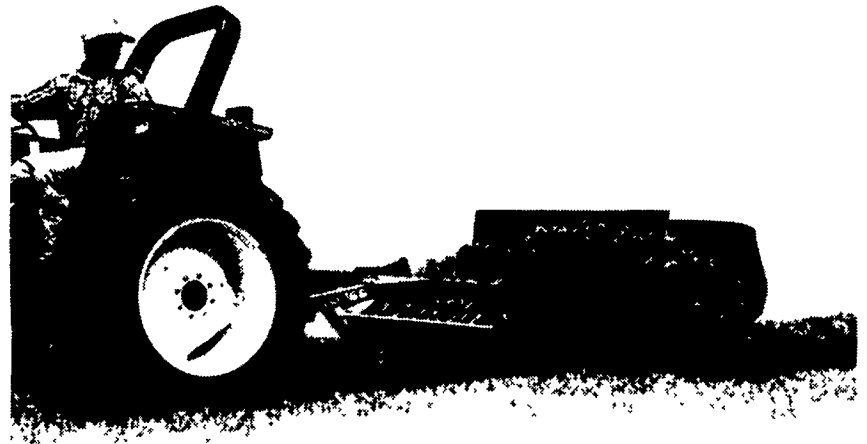
Fluffed up... never roughed up

If a storm hits while you're making hay, you'll need the New Holland Model 166 windrow inverter. It helps to dry hay fast, so you can bale or chop sooner. The 166 gently lifts, fluffs and turns windrows without roughing up the hay. So, you move your windrows onto dry ground for faster drying and retain valuable leaves.

For hay that's fluffed up not roughed up, check out the 166 today.



NEW HOLLAND



Why wait for the sun

Speed up drying time with a New Holland tedder. It lifts downed crop up so air flows through it. Choose from three tedders - 8'6" Model 157, 16'5" Model 163, or 22'8" Model 169.

Stop in. We'd like to show you how our tedders can help you put up quality hay.



NEW HOLLAND

SEE YOUR NEAREST NEW HOLLAND DEALER FOR DEPENDABLE EQUIPMENT & SERVICE

PENNSYLVANIA

Abbottstown, PA
Messick Equipment
RD 1, Box 255A
717-259-6617

Carlisle, PA
R&W
Equipment Co.
35 East Willow Street
717-243-2686

Pitman, PA
Schreffler Equipment
Pitman, PA
570-648-1120

Anville, PA
BHM Farm
Equipment, Inc.
RD 1, Rte. 934
717-867-2211

Elizabethtown, PA
Messick
Equipment
Rt. 283 - Rheems Exit
717-367-1319

Tamaqua, PA
Charles S.
Snyder, Inc.
R.D. 3
570-386-5945

MARYLAND

Frederick, MD
Ceresville New Holland, Inc.
Rt. 26 East
301-662-4197
Outside MD, 800-331-9122

Hagerstown, MD
Antietam Tractor &
Equipment, Inc.
20927 Leitersburg Pike
800-553-6731
301-791-1200

Rising Sun, MD
Ag Industrial Equipment
Route 1,
50 N. Greenmont Rd.
1-800-442-5043

NEW JERSEY

Washington, NJ
Smith Tractor &
Equip., Inc.
15 Hillcrest Ave.
908-689-7900

Bridgeton, NJ
Leslie G. Fogg, Inc.
Canton & Stow Creek
Landing Rd.
609-451-2727
609-935-5145

Woodstown, NJ
Owen Supply Co.
Broad Street & East Avenue
609-769-0308

