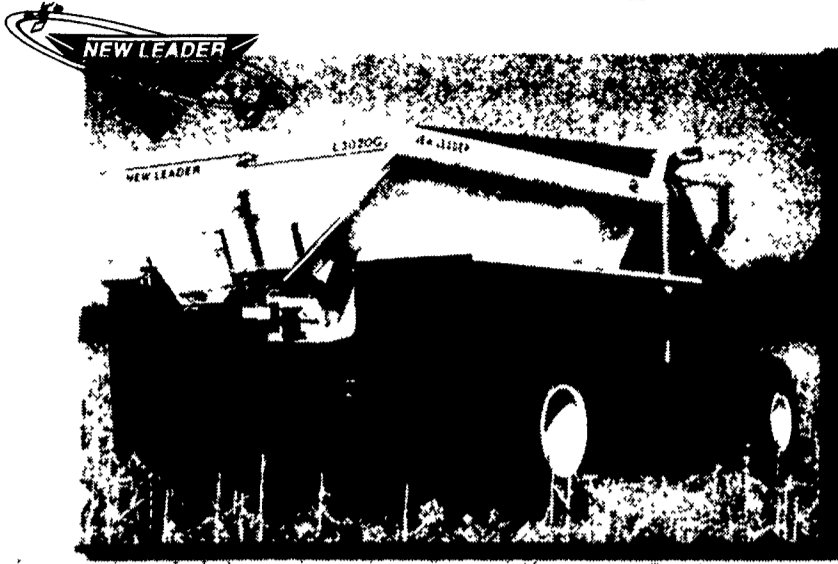


**NEW LEADER**

# G4 SERIES

## Fertilizer and Lime Spreaders



The New Leader G4 Series Spreader can spread more acres per day- with a wider range of material application rates- than any other granular applicator currently on the market. The new L3020G4 variable rate broadcaster allows you to

- ▶ Spread lime with effective swath widths up to 60'.
- ▶ Spread fertilizer with effective swath widths up to 90'.

The New Leader L2020G4 is also available.

For more information contact:

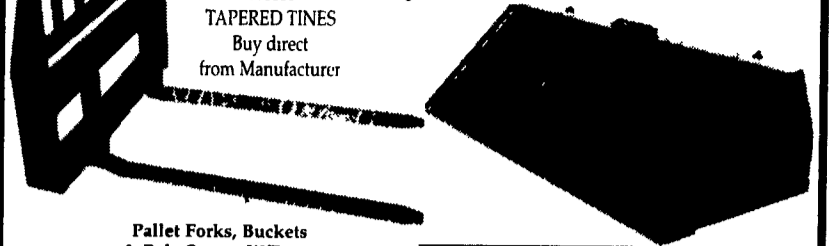
**ANNVILLE EQUIPMENT**



## Horning's Pallet Forks

E-Z LOADING WITH TAPERED TINES  
Buy direct from Manufacturer

Buy direct from Manufacturer



Pallet Forks, Buckets & Bale Spears W/Frame  
Mervin Horning Mifflinburg, Pa  
570-966-1025  
Or  
Weaco Equipment Womelsdorf, Pa.  
610-589-5555  
UNIVERSAL QUICK ATTACH FOR ANY SKID STEER LOADER

42" Pallet forks w/frame	\$485.
48" Pallet forks w/frame	\$495.
60" Utility Buckets starting	\$450.
Bale spears w/Frame	\$250.
Forks w/o frame	
4 x 11/4x42 @ \$215. And 4 x 11/4x48 @ \$225	
Manure Forks	

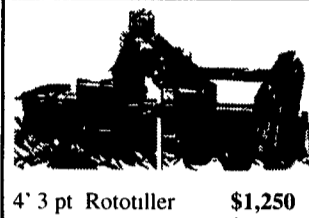
- HEAVY DUTY PALLET FORKS W/FRAME
- ADJUSTABLE FORKS WITH 3 LOCK-IN POSITIONS
- EXCELLENT VISIBILITY THROUGH THE PROTECTIVE RACK
- CONSTRUCTED OF SOLID FORGED ALLOY STEEL
- E-Z LOADING WITH TAPERED TINES

Plus shipping

## Kutz Farm Equipment • 570-345-4882



3 pt. Fertilizer Spreader ..... \$329



4' 3 pt. Rototiller ..... \$1,250  
5' 3 pt. Rototiller ..... \$1,295  
6' 3 pt. Rototiller ..... \$1,395

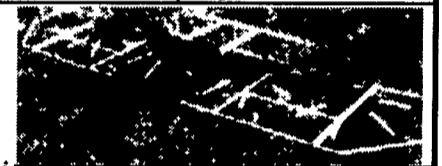


Pull Fertilizer Spreader ..... \$595

9' Pull Hay Tedder ..... \$1,295  
17' Pull Hay Tedder ..... \$2,695



5' 3 pt. Finish Mower (side or rear discharge) ..... \$995  
6' 3 pt. Finish Mower (side or rear discharge) ..... \$1,095  
91" 3 pt. Finish Mower (rear discharge) ..... \$1,395



4' 3 pt. Rotary Mower ..... \$585  
5' 3 pt. Rotary Mower ..... \$595  
6' 3 pt. Rotary Mower ..... \$695

# GUNTHER HEUSSMAN INC.

4801 S. 5TH ST., EMMAUS, PA 18049 610-965-5203

SEE MAP BELOW

Delivery & Financing Available

WE ARE CASH BUYERS FOR CLEAN, LATE MODEL FARM EQUIPMENT

### QUALITY TRACTORS Displayed Inside Building

- JD 4760, Cab, Air, 15 Speed Power Shift, MFD, Triple Remotes, Duals, 3600 1-Owner Hrs., Ex. Cond.
- 1981 JD 4640, Cab, Air, Quad Range, Triple Hyd., 20x38 Tires, 4400 1-Owner Hrs., Ex. Cond.
- 1982 JD 4440, Cab, Air, Quad, 2700 Hrs., Ex. Cond.
- JD 4440, Cab, Air, Quad, 4400 Hrs; Triple Hydraulics, Very Nice
- JD 4440, Cab, Air, Power Shift, 4200 Hrs., 20x38 Rubber.
- JD 4250, Cab, Air, Power Shift, MFD, 3300 Hrs., 20x38 Tires; Very Nice
- JD 4250, Cab, Air, 15 Spd Power Shift, 2WD, 4000 Hrs., Ex. Cond.
- JD 4320, Factory Cab, Air, Dual Hydraulics, Very Nice.
- JD 4320, Heiniker Cab, New 18x38, Dual Hyd., Very Nice.
- 1981 JD 4040, Quad Range, 4 Post. Roll Guard, 3000 1-Owner Hrs., Ex. Cond.
- JD 4000, Dsl., Side Console, WF, Dual Hydraulics, New 18x34, Very Nice
- 1999 JD 6410, Cab, Air, MFD, Power Quad, 1700 Hrs., Factory Warranty Till 2005.
- 1998 JD 6405, Roll Guard Canopy, 2WD, 1700 Hrs., Very Nice.
- 1997 JD 6400, Cab, Air, MFD, Power Quad w/Left Hand Reverser, 640 Self-Leveling Loader.
- 1996 JD 6300, Open Station, MFD, Power Quad, Dual Hydraulic, 1500 Hrs., Ex. Cond.
- 1997 JD 6200, Open Station, MFD, Power Quad. w/Left Hand Reverser, 640 Self-leveling Loader, Very Nice.
- JD 2550, Open Station, Indep. PTO, Dual Hydraulics, Very Nice.
- JD 2640, Dual Hydraulics, Indep. PTO, 4000 Hrs., Very Nice.
- 1992 JD 2355, Open Station, MFD, Hi-Lo, 3500 Hrs., w/QT Loader, Very Nice.
- JD 2355, w/Reverser, & QT Loader, 2800 Hrs., Very Good.
- JD 870, 4x4 w/440 Loader & Backhoe, 25 HP, Very Nice.
- 1981 IH 1086, Cab, Air, 18x38 Tires, Dual Hyd., Ex. Cond.
- IH 1086, Cab, Air, Dual Hydraulics, PTO, 6300 Hrs., Good Condition.
- IH 1066, Black Stripe, Fender, Dual Hydraulics, PTO, Good Condition.
- 1975 IH 1066, Red Cab, 4000 Hrs., Duals, Ex. Condition.
- IH 886, Cab, Air, 4100 Hrs., Ex. Cond.

### MISCELLANEOUS EQUIPMENT

- JD 7200 4RN, Dry Fert., No-Till Coulters, Ex. Cond.
- JD 7200 4RW Dry Fert., No Till Coulters, Ex Cond
- JD 750, 10ft No-Till Drill, Grass Seed & Dolly Wheel, Ex. Cond.
- Brillion 10ft Packer Grass Seeder, Double Box, Very Good
- Axle Mount Duals To Fit IH 856 Thru 1486, JD 4440 & 4450, 4020 & 4320 18-20x38 18-34 Snap On.
- JD 300 Corn Picker, 2RN or 2 RW Head, Ex Cond
- NI 324 & 325 2R Corn Pickers, Good Cond
- NI 323 1R Corn Picker, Very Nice
- Gehl 95 Grinder Mixer, Hyd Drive w/Scales, Ex Cond
- Schultz Rock Picker w/PTO Drive
- Schultz Rock Picker w/Hyd. Drive

### QUALITY HAY EQUIPMENT

- NH 1038 Bale Wagon, 105 Bale Capacity W/Single Bale Unload & Retrive
- NH 1033 Bale Wagon, 105 Bale Capacity, Very Nice
- Agco NI 4845 4x5 Round Baler w/Net Wrap
- JD 446 Round Baler w/Silage Kit, Like New
- JD 456 Round Baler w/Silage Kit & Tucker Wheels, Ex Cond.
- JD 435 Round Baler w/Silage Kit, Very Nice
- JD 335 Round Baler w/Silage Kit, Good Cond.
- JD 430 Round Baler w/Monitor, Very Nice
- Ford NH 570 Baler w/72 Thrower, Very Nice
- JD 338 Baler w/40 Ejector, Very Nice
- Vicon 4 Star Tedder, Good Cond.
- NH 258 Rake W/Dolly Wheel
- Woods 215, 15ft Batwing Mower, Good Cond.
- JD 1518 Batwing Mower
- JD 1508 15' Batwing Mower
- JD 3RN Green Forage Head, Ex. Cond.
- JD 3970 Harvester, Metal Alert, Hyd Tongue, Very Nice
- JD 920 Discbine, Impeller, Good Cond.
- JD 1360 Discbine w/Impellers, Good Cond.
- Ford NH 360N, 3RN Corn Head, Ex. Cond.
- NH 890W Pickup Head, Very Nice
- JD #40 Ejector, Good Cond.

### TILLAGE EQUIPMENT

- IH 720, 6x18 On Land Spring Reset Plow
- IH 720, 7 base Spring Reset On-Land Hitch
- IH 720 4-5-6x18 Spring Reset Plows
- White 588 5x18, Spring Reset Plow
- IH 13T 3pt Chisel Plow
- Krause 1900 21 Ft. Rock Flex Disc, Ex Cond
- JD AW 10ft Disc, Ex Cond.

### QUALITY COMBINES Displayed Inside Building

- 1997 JD 9500 Fully Equipped, 700 Hrs, Ex Cond
- 1991 JD 9400 Fully Equip, 1700 Hrs. Ex Cond
- Gleaner Deutz Allis R52 Cab, Air, Hydro, 1200 Hrs. Ex Cond.
- 1985 MF 850 Cab, Air, Hydro, 2300 Hrs, Ex Cond

### HIGH QUALITY CORN AND GRAIN HEADS 50 Corn Heads & Flex Heads To Choose From

- JD 920, 20 ft Flex, Fore & Aft
- JD 918 Flex Head
- JD 915, 15' Flex
- JD 915, 15' Flex, Side Hi
- JD 215 Flex
- MF 1859 15' Flex Head
- JD 443 4RN, Oil Bath
- JD 443, 4RN Hi Tin
- JD 643 6RN Oil Bath
- JD 643 Low Tin, 6RN
- Case IH 1020, 15 ft. Flex
- Case IH 1063, 6RN
- IH 843, 4RN
- IH 963, 6RN
- MF 1163 6RN
- AC FII, 315 Flex Head

### Trade-In Specials

- JD 1600, 11 Shank Chisel Plow ..... \$900
- NH D100 13 ft Disc ..... \$2,600
- Dagelman Rock Picker ..... \$2,200
- JD 148 Loader W/Bale Spear ..... \$1,200
- MF 1163, 6RN Corn Head ..... \$1,200
- JD 443, 4RN Low Tin Corn Head ..... \$2,500
- Krause 4900, 21ft Rock Flex Disc ..... \$6,600

