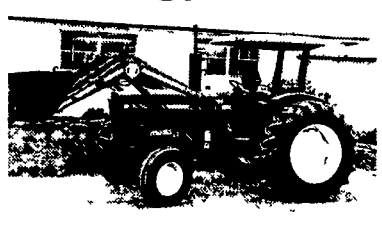


JD 900 HC, w/Wide Axles, Cultivators & Side Dresser, 500 Hrs.



JD 1650, 2WD, Canopy w/Bush Hog Ldr., 2,600 Hrs.

FORD TRACTORS

8670, cab, 4WD, super steer, 18.4x42 duals, 700 hrs.
 TW20, cab, air DP, 23 1x34, 1,200 hrs.
 TW15 II, cab, air, 4WD, 20 8x38, 3,300 hrs.
 TS-110, cab, air, 4WD, 4R34, pwr shift, 400 hrs.
 TS-100, cab, air, 4WD, w/Alo ldr., 1,200 hrs.
 TS-100, cab, 4WD, 16x16 plus creeper, 400 hrs.
 8700, DP, dual remotes, 18.4x38, 4,200 hrs.
 8260, 2WD, rollbar, pwr shift, bar axle, 900 hrs.
 7710 II, cab, air, 18.4R x 34., 800 hrs.
 7710, cab, air, DP, dual remotes, 18.4x34, 2,400 hrs.
 7600, DP, cab, 18.4x34
 6635, cab, air, 18.4x34, 24x12, 1,800 hrs
 5030, 4WD, roll bar, 8x8 shuttle, 1,400 hrs.
 TN 75, 4WD, 18.4x34, 250 hrs.
 4630, 4WD, 8x8 shuttle w/Ford ldr., 1,600 hrs.
 4610 II, canopy, dual remotes w/Woods ldr., 1,900 hrs
 4600 diesel, 8 spd, 16.9x30, 3,700 hrs.
 4000 SU, gas, 8 spd, pwr steering, 3,500 hrs.
 3930, 4WD, shuttle w/Ford Ldr., 450 hrs.
 3910 II, 2WD, 1989, dual remotes, 450 hrs.
 2910 II, ds/w/Ford 7209 ldr., 1,100 hrs.
 3000, gas, 8 spd, pwr steering, 1971, 3,400 hrs.
 16D LGT, hydro, pwr. steering, 48" deck, 300 hrs.
 14D LGT, 14HP, dsl, w/48" deck, 1,700 hrs.
 8N, 1948 model
 Case IH 5240, rollbar, syncro, bar axle, 3,300 hrs.
 Case IH 585, 4WD, rollbar, 8 spd, 3,200 hrs.

JOHN DEERE TRACTORS

2755, 4WD, hi-low, dual remotes, 245 ldr., 4,200 hrs.
 2755, cab, air, 2WD, hi-low, dual remotes, 1,800 hrs
 2755, 2WD, hi-low, dual remotes, 5,200 hrs.
 2755, hi-low, dual remotes, 540/1000, 4,200 hrs.
 2555, hi-low, dual remotes, 18.4x30, 2,500 hrs.
 2150, 2WD, 16.9x38, 2,300 hrs.
 1650, 2WD, canopy w/Bush Hog ldr., 2,600 hrs.
 900 HC, w/wide axles, cultivators & side dresser, 500 hrs.

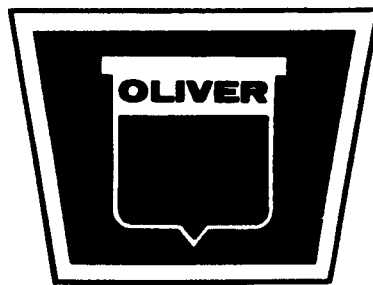
EQUIPMENT

NH LX885, silo loader, 2,500 hrs.
 NH 648, Silage Special, 4,000 bales
 NH 311, baler w/thrower
 NH 28, blower
 NH 824, com head
 Ford 515, sickle bar mower
 NH 52LA, loader fits 35 & TL models
 Ford 7310, loader fits 3930 to 5030
 Ford 7209, loader fits 3930 to 5030, 2WD
 JD 350, sickle bar mower
 NH 451, 3 pt. sickle bar mower
 Woods MS, 3 pt., 5' rotary mower
 Weights to fit most Ford tractors

- ★ All Tractors Tested On Our Farms ★
- ★ Tractors Stored Inside ★
- ★ Lease & Financing Available ★
- ★ Please Call For Appointment ★

Burkholder Bros.

400 Farmersville Rd., Lebanon, PA
 (2 miles from Schaefferstown on Rt. 419 South)
 2 Locations
717-272-2352
 Lloyd Burkholder
 330 Crest Rd., Lebanon, PA
 400 Farmersville Rd., Lebanon, PA
 Fax: 717-272-2352



OLIVER TRACTOR PARTS
NEW or USED

We Are Your Better Source For Oliver Tractor Parts
NOW IN STOCK - 400 OLIVER TRACTORS DISMANTLED
 with The Parts, Cleaned, Inspected, And Ready
 To Ship The Same Day You Order
Try Us- We Can Get You Going
We Will Ship You The Correct Part The First Time



CLUTCH PROBLEMS?

We can get you going with the correct clutch the first time

IN STOCK Over 100 Hy-Capacity Rebuilt Replacement Clutch Discs & Pressure Plates.

For Every OLIVER TRACTOR from 1940-1975 and For Every WHITE TRACTOR from 1975-1990

All HY-CAPACITY Clutch Discs & Pressure Plates Purchased From Farmersville Equipment Have A One Year Warranty.

Clutch Discs & Pressure Plates in Stock for Oliver Super 55, 60, 66, Super 66, 660, 70 Tractors

FARMERSVILLE EQUIPMENT

— INC. —

142 East Farmersville Road, PO Box 638, Ephrata, PA 17522-0638

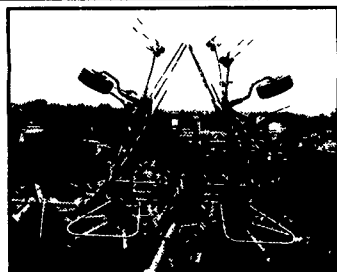
Located In Village of Farmersville, Lancaster County

STORE HOURS: Mon. Thru Fri. 8 AM - 5 PM; Sat. By Appointment Only

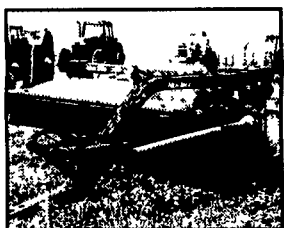
717-354-2150 • Fax 717-355-9909



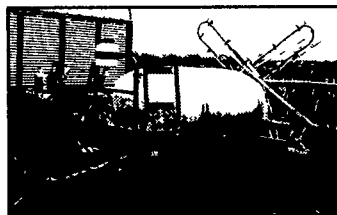
Best Buys in Used Equipment



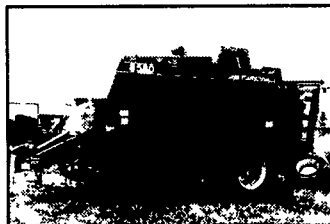
Hesston 3717 Tedder \$3,400



NI 5209, Red, Like New \$8,500



Century 500 Gal Sprayer, Sprayed 30 Acres



CIH 8580 Baler 26,000 Bales \$28,000

TRACTORS

- CIH MX 170 w/loader
- CIH MX110
- CIH 5130 MFD, Cab, Loader
- CIH 8930
- CIH 8940
- CIH 7110 2WD, 1,600 Hrs.
- CIH 5140, MFD
- CIH 3220
- CIH 895, cab
- Case 430 w/loader
- Case 970
- Case 995
- Case 1690
- Case 2670 (Nice)
- Case IH 8920
- IH 574
- IH 784
- IH 966
- IH 986
- IH 1486
- JD 4230
- JD 4250 MFD
- MF 1155
- MF 3090 2WD, Cab
- Oliver 770

HAY EQUIPMENT

- CIH DC515, 15' Disc Mower
- Gehl 2412 Disc Mower
- NI 5209
- Kuhn 16ft. HydroSwing Disc Mower
- CIH 8575 4,000 Bales
- CIH 8580 Big Baler
- Hesston 540 Baler
- IH 440 Baler
- NI 4845 Baler
- CIH 8350 Mower
- JD 1219
- 6 ft. 3 pt. Disc Mower
- Hesston 4-star Tedder

HARVESTING EQUIPMENT

- Miller Pro 16ft. Wagon (Like New)
- NH #8 Wagon 12 Ton Gear
- Gehl 980 Wagon (Like New)
- (2) Gehl 1660 Combo Wagons
- (2) Badger 950 Wagons
- Miller 5200 18ft.
- Gehl 865 Harvester
- NI 2RN Picker
- Gleaner, R62 25' Flex,

6 RN

- NH 782 Harvester
- SKID LOADERS**
- Case 1835C
 - Case 60XT
 - Case 90XT
 - Case 95XT
 - Case 1840
 - Case 1845 (MS) 4,000
 - Case 580L
 - FFC Preperator
 - Rubber Tire Scraper
 - Big Arm Backhoe
- MISCELLANEOUS**
- IH 800 4RN Planter
 - JD 8350 Drill
 - Knight 8040 Spreader
 - NI 3639 Spreader
 - NI 3732 Spreader
 - NI 36 ft. Elevator
 - 30 ft. Elevator
 - Vandale TMR
 - Farmmaster TMR Cart
 - Weaverline 430 Cart
 - WIC 45 Feed Cart
 - Woods Bank Mower
 - 500 Gal. Century Sprayer (New)
 - GVM 2000 Prowler SP Sprayer
 - JD Axle Duals 18.4x38
 - 710-70 R42 Tires



717-933-4114

Visit us on the internet at <http://www.caseih.com>
 Case IH is registered trademark of Case Corporation

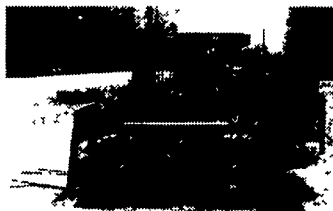


Cleveland Brothers



For more details please visit www.clevelandbrothers.com

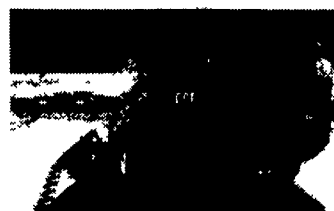
Skid Steers



2000 New Hollaad LS190

Asking Price: **\$26,000**
 SMH: 1327
 ID-Number: ULT6854

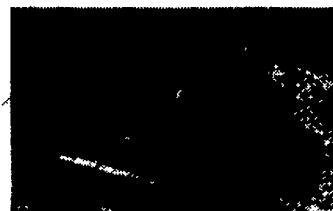
Equipped: EROPS, cab, heated, 2 speed, super boom, plumb to front, 84" bucket, 36" pallet forks, Tires: foam-filled 12-16.5, RF 15%, LF 25%, RR 65%, LR 65%



1999 Caterpillar 246

Asking Price: **\$21,500**
 SMH: 1710
 ID Number: ULT7433

Equipped: ROPS, 2 in. static seat belt, tires: 12X16.5 PR Galaxy



1995 ASV MD70

Asking Price: **\$14,000**
 SMH: 1246
 ID Number: ULT7461

Equipped: Track, Isuzu diesel engine, canopy, 66 in. bucket, radial aux hyd, track @ 90%

1991 New Holland L455
 Asking Price: **\$6,000**
 SMH: 5491
 ID Number: ULT7411

Equipped: ROPS w/plexiglass side window, Kubota engine, 66 in. bucket WOCE, tires: 27X10.5-15 all @ 80%

2000 New Holland LS190
 Asking Price: **\$26,000**
 SMH: 1332
 ID Number: ULT7442

Equipped: 2 cylinder turbo engine, 75 HP, tires: RF 90%, LF 90%, RR 90%, LR 90%, 2842 lbs. oper. capacity

2001 Bobcat 763HF
 Asking Price: **\$17,500**
 SMH: 701
 ID Number: ULT7144

Equipped: ROPS, high flow, plumbed to front, 68 in. GP bucket, 1500 lbs. oper. cap., tires: 10-16.5 @ 20% all

1999 Bobcat 873
 Asking Price: **\$20,200**
 SMH: 952
 ID Number: ULT6934

Equipped: OROPS, Deutz engine, 72" bucket, 40" forks, extra hyd to front, Tires: 12-16.5 @ 50%

1999 Bobcat 863
 Asking Price: **\$15,600**
 SMH: 1881
 ID Number: ULT6903

Equipped: OROPS, beacon light, GP bckt 8 tips weld on, Tires: 12-16.5 all 50%, extra valve to front

Call Bill Yurkovic or Rob Joyce

Phone: 1-717-564-2121, Fax: 1-717-564-6931 or

email: byurkovic@clevelandbrothers.com or rjoyce@clevelandbrothers.com