

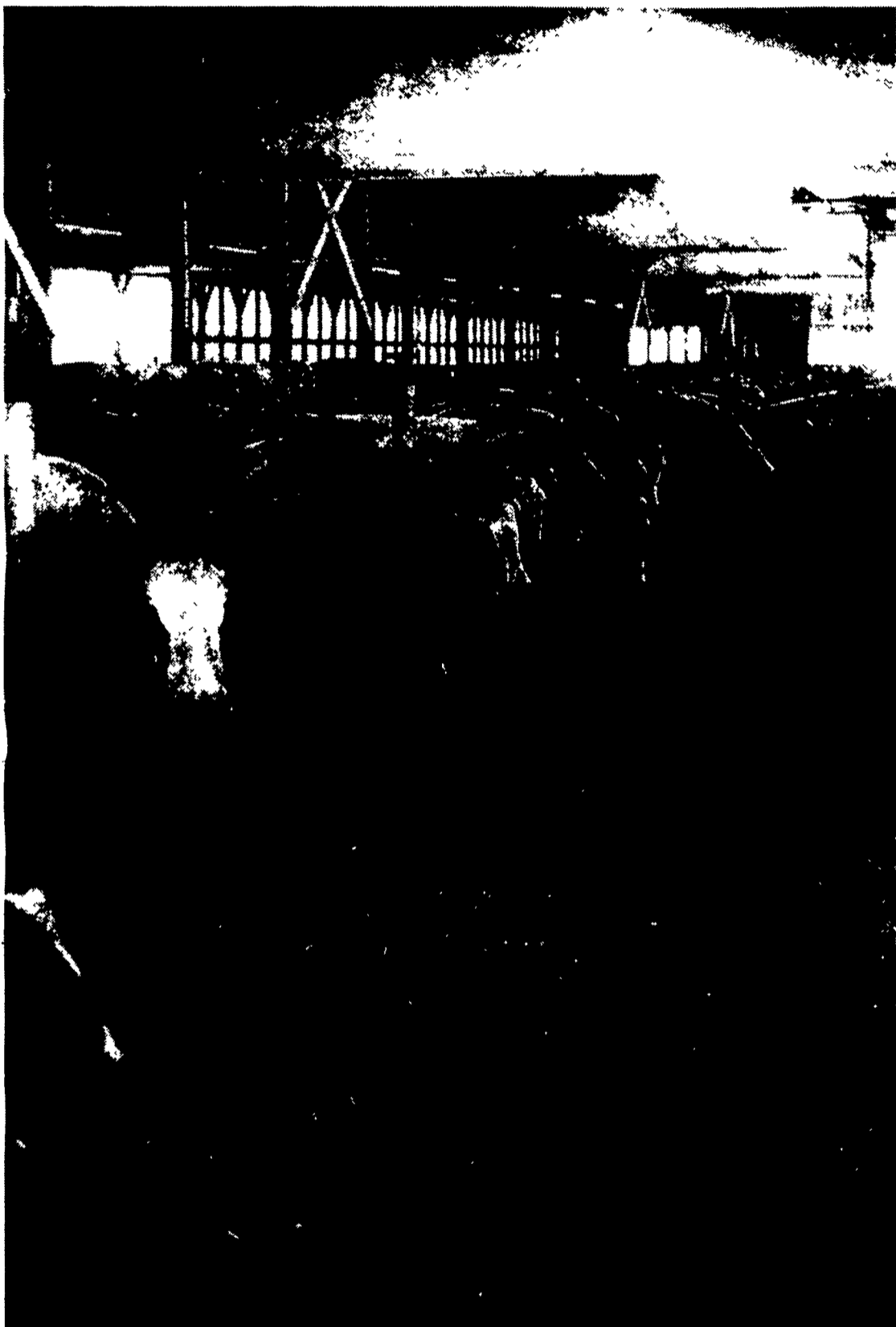


ADM Alliance Nutrition™
Proven Performance from Innovative Nutrition™

DAIRY RESEARCH PROGRAM

• **New Applications**

• **Product Development**



Initial development work is conducted at the Ruminant Intensive Research Unit at the Decatur, IN Research Center. At this facility, with 20 cannulated lactating cows, research emphasizes the development of products and feeding programs that improve rumen function.

From this initial development work, products with commercial applications are evaluated at the Twin Oaks Dairy, a 500-cow dairy unit at Emmitsburg, MD.

The Twin Oaks Dairy field research is a key segment of the successful dairy feed product development program for Alliance Nutrition. At this facility, individual cow identification, daily milk production and weekly measurements of milk components enable us to monitor and evaluate individual cow response to the ingredients, feed products and feeding programs being tested.

This data is used to validate the commercial success of the Alliance Nutrition dairy feeding programs and enhances the confidence of commercial success of these products and programs for our dairy customers.

MIFFLINBURG FARMERS EXCHANGE
 Mifflinburg, PA
 (717) 966-1001

BIG VALLEY FEED & GRAIN
 Belleville, PA
 (717) 935-2163

ADM ALLIANCE NUTRITION PENN YAN
 4090 Rte. 14A
 Penn Yan, NY 14527
 (607) 243-9030
 (888) 680)9030

HOKE MILLS, INC.
 York, PA
 (717) 843-8889
 Abbottstown, PA
 (717) 259-0609

THURMONT COOPERATIVE FARMERS EXCHANGE
 Thurmont, MD
 (301) 271-7321

FARMERS COOPERATIVE ASSN. INC.
 Frederick, MD
 (301) 663-3113

SENENIG'S FEED MILL
 New Holland, PA
 (717) 354-4756

SNIDER'S ELEVATOR
 Lemasters, PA
 (717) 328-2107

Check us out on our Web Site at www.cnlc.com



ADM Alliance Nutrition™
Proven Performance from Innovative Nutrition™