

CENTRAL VIRGINIA: Farms and land available from 5 to 500 acres, reasonable prices, very low taxes, farmer friendly communities, agricultural economy.

State Wide Realty Co.
Farmville, Virginia
434-392-6163
www.vastatewiderealty.com

FARMERS WANTED

LOOKING FOR A FARMER-FRIENDLY COMMUNITY?

Lewis County, New York is farmer-friendly with reasonable land prices and strong local milk markets.

Other reasons to consider Lewis County, NY:
• great quality of life • superior schools

Call 1-800-724-0242 ext. 57 for FREE information or visit www.FarmLewis.com

Bedford County, PA. 2 year old Reproduction Farm House with wrap-around porch on 25.6 acres with a commanding view of Bedford Valley. 4 Bedrooms, 3 Walk-in Closets, Large Great Room, Quality Cherry Cabinets, Dining Room, 2-1/2 Baths, Full Basement. 2-1/2 Car Garage and much, much more. Excellent Hunting and Fishing. 5 Minutes from Interstate 99, 10 minutes from Turnpike, 5 minutes from Airport. (One of a Kind)

Call for appointment or more information.
RURAL AMERICA REALTY GROUP
WES APPELYARD
814-944-1873 - office 814-329-2755 - cell
WLAppleyard@Pennswoods.net

Nippenose Valley
PRICE REDUCED



Lycoming County, Jersey Shore area. 50 acres, 44 tillable, 6 pasture 40 more acres available to rent. House 4/5 bedrooms in very good condition. 40x90 Cow barn with 40 tie stalls. 2 silos, 2 calf barns, heifer & chicken barns. 20x30 road side stand. This is an established business and a profitable income producer. Amish equipped.

Brush Valley
PRICE REDUCED!



Centre County, Miles Township, Rebersburg area. 13.8+/- acres. Nice 3 bedroom 2 bath house. 40x100 pole barn with shop area. 14x20 lawn mower shed, 40x60 bank barn with loafing area. Both barns have water & electric.

Brush Valley
SALE PENDING

Centre County, Miles Township, Rebersburg area. 14.2+/- acres. Vacant Land, 50 feet road frontage ideal for horse farm or build your dream house.

Lebanon County

Anville, Ft. Indiantown Gap, Harrisburg area. Two 44' x 360' two-story chicken houses. Contracted for natural antibiotic-free, hormone-free chickens. This farm provides a high income. Good investment property or build a house and live on the property.

Schuylkill County

South Manheim Twp.,

Schuylkill Haven School District

32.9+/- acres of bare ground, 10-12 acres open land, balance is wooded. Located in the Auburn area, between Reading & Pottsville. Close to Route 61. Make your own horse farm or build your dream house.

Call Hiram Hershey, Broker
Thomas Hershey, Realtor Associate
HERSHEY FARM AGENCY, INC.
1-800-880-3831

Blair Co. PA - 1550 acres adjoining Canoe Creek State Park. 150 acres of fields, balance wooded. Small stream and pond. Borders Juniata River at rear of property. 2 miles of road frontage. Ideal hunting and fishing. Close to Interstate 99 & Blair Co. Airport.

Call for appointment or more information.
RURAL AMERICA REALTY GROUP
WES APPELYARD
814-944-1873 - office 814-329-2755 - cell
WLAppleyard@Pennswoods.net

Koch Homestead Realty

91 Princeton St. Wellsboro, PA 570-724-3500
9 North Main St. Mansfield, PA 570-662-3287
403 E. Main St. Elkland PA 16920 814-258-7117

W106 - Enjoy those lazy days in this 2 bedroom cottage on a full basement. Nice hardwood floors and knotty pine walls make this a cozy retreat. Can't beat the price at **\$47,500. #111729**

W006 - THE BEST OF BOTH WORLDS! Lovely remodeled 1866 home with modern 1,300 sq. ft. rental unit. Plus an 18 hole miniature golf course. All new windows, low maintenance brick exterior. Large home with 3,300 sq. ft. of living space and 3 baths. **\$275,000 #111874**

M030 - REDUCED! This four bedroom, two bath home has a large family room in basement with a summer kitchen for added convenience. Large deck overlooking a 16' x 32' heated, above ground pool and an attached 2 car garage. A great home for a growing family located on a safe, dead end street. This home offers everything you desire! **\$110,900 #111199**

E229 - FROM THE MOMENT you enter the foyer, you know this one is special! The towering entry gives way to a spacious interior featuring formal dining room, office, master bedroom with fireplace, lavish master bath, third floor guest suite, much more. Enjoy the sweeping views of the lake and surrounding hilltops. **\$229,900 #112021**

Visit our web site www.koch-real-estate.com

SANFORD G. LEAMAN, REALTOR/AUCTIONEER

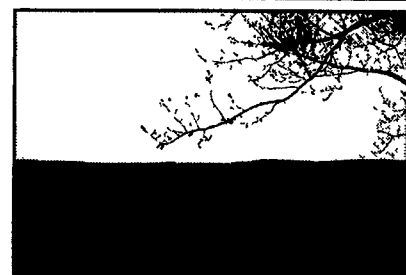
101 White Oak Drive, Lancaster, PA 17601-4842
Phone: (717) 569-4264 - Toll Free: 1-800-836-8113
FAX: (717) 569-8847

Specializing in Farm Real Estate & Equipment
Web: www.lamnauct.com
Email: farmboy@lamnauct.com

Central Northumberland Co. 71 acre Amish equipped dairy farm. The setting is ideal, excellent soils, beautiful 3 bedroom farm house w/modern kitchen, Parquet oak floors and lots of excellent living area. There is a large horse barn, milk stable, implement shed and much more. Let me give you a private tour. You can have settlement now to honor your tax deferred exchange with possession at a later date. I'll handle those details for you. It won't last long - it's priced right.

Bradford Co. Rome area 155+/- acre dairy farm with 54 stanchions on 2" pipeline, 6 Surge milkers, bulk milk tank, silo and a beautifully remodeled 2 1/2 story farm house. There is an implement shed/young stock facility and in an area of good farms. Priced @ \$299,900. It should be sold very quickly at this price.

**NEED A 100 ACRE FARM
NEED NOT BE DAIRY**
in Troy, Canton Bradford Co. Area



20 Acres-Recreational

24'x40' Cabin\$48,900
Septic System Installed
Walk to Sprout State Forest!



13 Acres-Residential

Wooded Seclusion\$39,900
Views!! Great Wildlife!!
Only 3 miles from Lock Haven!!

OTHER PROPERTIES ALSO AVAILABLE!
Call Stern Real Estate NOW!!
570/726-6388
www.palandforsale.com

**CENTRAL PENNSYLVANIA
FARMS, FARMETTES, LAND
AND CABINS**

Our Farm and Land Division currently has many farms, farmettes, land parcels, and cabins available in central Pennsylvania. We would be happy to send you a free farm and farmette list and/or rural land and cabin list.

Call for a complete farm and farmette inventory.

Farm and Land Division

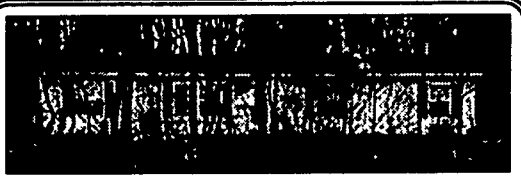
Fred Strouse (814) 364-1705
Mel Rockey (814) 466-6688
George Demchak (814) 625-9151
Tim Lake (814) 364-1327



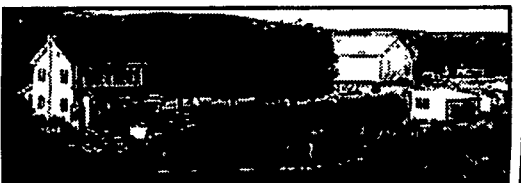
2300 South Atherton
State College, PA 16801
(814) 234-4000
1-800-876-339E

United Country
Missouri Ozarks Realty
Free Real Estate Catalog
417/256-1000

We Buy Land -
Call Greg @
717-464-9060
ext 120



1096 - NEW LISTING HALIFAX - Ranch style home on 6.68 ac nestled back in the woods. Eat-in kit, DR, fam rm w/FP, full basement w/den, office & bth, 30x60 horse barn w/6 stalls. A must see! **\$160,000.**



946 - HALIFAX - Farm w/24.329 ac's. Totally redone house & barn, new kit. & updated bth, 4BR-large FR w/fireplace. Great view from front porch & back deck. A must see!! **\$285,000.**

Century 21 Carl Snyder
Please Call Carl or Carmen 717/896-8808,
or Carl 717/979-8042
www.century21snyder.com

**NEW HORIZONS
REAL ESTATE CO.**

CAMP SITE - 4 1/2 acres. All wooded land in Eagleton Forest. Lot 37. **\$11,900**

10 ACRES PLUS - 2 hunting camps. Can be lived in year round. Small pond. Good hunting. Between Houtzdale & Clearfield. **\$79,000.**

39 ACRES - Mostly cleared & tillable. Off Grange Road, between Houtzdale & Clearfield. Good camp site. **\$44,500.**

18 ACRES off Rt. 144 between Renovo and Moshannon to Beech Creek Mountain Road in Eagleton Forest. Private camp site. **\$28,000.**

(814) 355-8500
www.newhorizonrealestatepa.com



BEDFORD COUNTY, PA - Dairy Farm with 500+/- acres, two houses, bank barn, free stall barn and silos. Also crop land, pasture and woodland and spring fed pond. Call for information, shown by appointment. File #1406.



Coldwell Banker/SKS Realty

3518 Business 220
Bedford, PA 15522

SKS REALTY

800/266-9665 • 814/623-7009



Farm - 400 Acres
Beautiful Home, 2 Story, 1 1/2 Bath
Farm Equipment & Buildings
Good Condition, Located 4 Miles Dushore, Overton Road
570/928-8335



8795 PINEVILLE ROAD, SHIPPENSBURG, PA 17257
Four bedrooms, 3 full baths, bi-level home on 3.5 acres with inground pool deck, patio, shed, 4 stall horse barn 30x50 metal shed, fenced pastures, room for family and entertaining, professionally landscaped. FL4776539, offered at \$350,000. "YOUR HOME IS WAITING - COME AND GET IT!!"



1061 RIDGE ROAD, SHIPPENSBURG, PA 17257
16-room brick mansion on 6.11 acres. Let this one catch your eye! Large brick home, 4200 sq. ft., large stone bank barn, 6.1 acres of land. Room to store materials, equipment, supplies, etc. CB4486610. Priced for you at \$399,000.

In Adams County, an aggressive 10 room Bar & Grill business. Call for more details!!



Kelly Shetter
717/709-4069

Jack Gaughen Realtor ERA
717/264-9600