

# www.kbford.com

Your Internet Connection

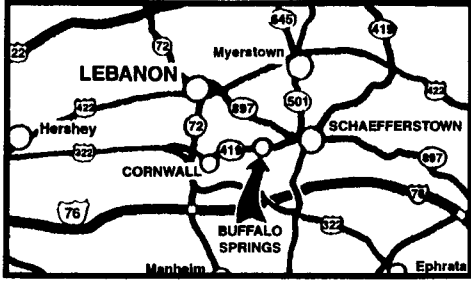
SPECIALIZING IN NEW & USED SUPER DUTY PICKUPS

## KELLER BROS.

(Buffalo Springs) Lebanon, PA

717-949-2000 or 1-800-363-2767

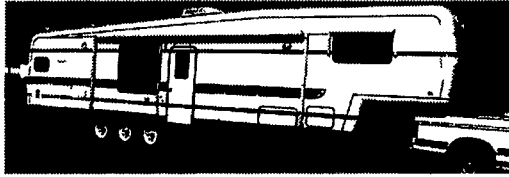
LEBANON COUNTY'S HEAVY DUTY TRUCK HQTRS.



**FAMILY OWNED AND OPERATED FOR OVER 80 YEARS**

Over 100 Clean Pre-Owned Vehicles In Stock At All Times!!

**1989 - 40 ft. Kountry Air 5th Wheel TRAVEL TRAILER**  
2-Slide Outs, Central Air, Gas/Electric, Washer/Dryer Spring Special  
**\$14,875**



**2001 DODGE RAM 1500**  
Quad Cab, 4x4, SLT, V8, AT, A/C  
**\$23,995**



**2002 CHEV. 2500 EXT. CAB LS 4x4**  
6L V8, AT, A/C, PW, PL, P. Seat, Only 12,000 Miles  
**\$29,595**



**2001 FORD SPORT TRAC**  
4x4 4.0 V6, AT, A/C, PW, PL, 48,000 Miles Alloy Wheels  
**\$19,900**



**1999 FORD F250 SUPER CAB XLT 4x4**  
7.3 Turbo Diesel, 6 Spd., A/C, PW, PDL, Very Clean  
**\$21,995**



**2001 FORD ESCAPE**  
XLS, 4x4, 5-Spd., A/C, PW, PL, CD  
Only **\$14,595**



**2002 CHEV. EXPRESS VAN LT**  
5.7 V8, AT, A/C, Quad Capt. Seats, DVD, Leather Spring Special  
**\$20,995**



**2003 FORD E350 SUPER CARGO VAN**  
7.3 Power Stroke Diesel, AT, 5-Passenger, Dual A/C, 9,400 GVW, 4:10 Limited Slip, Cargo Cage, MSRP \$36,010  
**SALE \$29,937**



**2003 FORD F350 CREW CAB**  
V10, AT, Full Power, 4x4 Cab & Chassis Only.  
"SAVE THOUSANDS"



**1998 FORD EXPEDITION 4X4 EDDIE BAUER**  
V8, A/C, Full Power  
**\$15,795**



**2000 FORD F650 BOX TRUCK**  
Cat Diesel, AT, 24 Ft. Box, Hyd. Lift, 26,000 GVW, Air Brakes, Only 9,000 Miles  
**LIKE NEW \$36,775**



**1995 DODGE RAM 1500 SLT 4x4**  
V8, AT, A/C  
Only **\$9,595**



**2001 FORD F150 SUPER CREW KING RANCH EDITION**  
Local Trade 1 Owner  
**\$23,665**



**2003 FORD E550 CUT AWAY CHASSIS**  
7.3L Power Stroke Diesel, AT, A/C, PW, P Seats, Chrome Wheels, MSRP \$37,165  
**NOW \$29,665**  
Save \$7,500



**2000 FORD F350 CREW CAB DUALY**  
XLT, 7.3 Diesel, 6-Spd., A/C, PW, PL, T, C, CD, Ready To Tow Only 9,000 Miles  
**\$34,995**



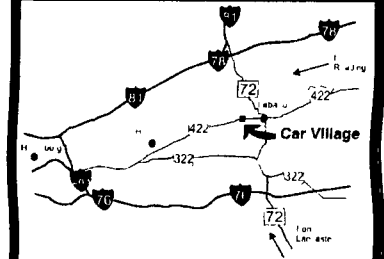
Nicest Trucks In the East • Nicest Trucks In the East • Nicest Trucks In the East • Nicest Trucks In the East • Nicest Trucks In the East • Nicest Trucks In the East

www.useddieseltruck.com

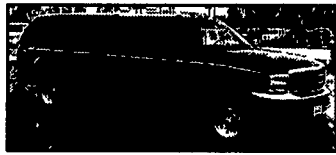
2300 W. CUMBERLAND ST. (Rt. 422)  
LEBANON, PA 17042  
(Across From Lebanon Valley Mall)

# CAR VILLAGE

1-800-650-1420  
717-274-2000



**HEAVY CHEVY • 2000 CHEVY K3500 CREW DUALY, 4 WHEEL DRIVE**  
Hey Chevy Guys. This is The One. Only 28,000 Miles. High Output, 5.5 Turbo Diesel, Auto, All Power Options, Swing Out Mirrors & More



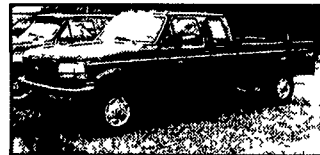
**2000 FORD F250 SUPER CAB 4X4**  
Only 59,000 Miles, Powerstroke Turbo Diesel, Auto, A/C, Loaded XLT, Tow Pkg., Fact. Run Boards, Alloy Wheels. Nice Fiberglass Cap.  
**\$28,900**



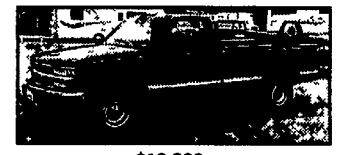
**\$9,900**  
**97 DODGE 2500 4x4**  
Heavy Duty 3/4 Ton 360 V8, Auto, A/C, Limited Slip Axle. Very Clean. Runs Great



**1 TON PICKUP**  
**97 FORD F350**  
Powerstroke Diesel, 4x4, Auto, Loaded XLT, Alloy Wheels, Dual Tanks • **\$13,900**



**\$13,900**  
**97 FORD F250 SUPER CAB 4X4**  
Ready & Waiting for You. Powerstroke Turbo Diesel, Auto, A/C



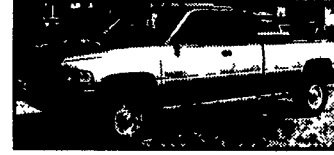
**\$18,900**  
**1999 CHEVY K2500 4X4**  
Only 48,000 Miles, Very Nice Driving Tk, High Output 6.5 Turbo Diesel, AT, A/C, Limited Slip Axle.



**\$17,900**  
**2000 CHEVY 3500 4 DOOR 4X4**  
Vortec 350 V8, Auto., A/C, Tow Pkg., Runs & Drives Super Nice



**2 BLACK SHORTBED**  
**2000 FORD F250 SUPERCAB 4X4**  
Gorgeous - Like New, Only 6,000 Miles, 5.4 Triton V8, Auto, AC, Limited Slip Axle



**CUMMINS DIESEL**  
**98 DODGE 2500 QUAD CAB 4x4**  
24 Valve Cummins Turbo Diesel, Auto, A/C, Laramie SLT Pkg., 48,000 Miles



**6 SPEED SUPERCAB**  
**98 FORD F250 4X4**  
One Of The Nicest Anywhere, Only 53,000 Miles, Powerstroke Turbo Diesel, Auto, A/C, Captain Chairs, Console, Tow Pkg



**DARK BLUE SHORTBED**  
**2001 Dodge 2500 QUAD CAB 4X4.** Short & Sweet, 24 Valve Cummins Turbo Diesel, Auto, AC, Laramie SLT. Only 33,000 Miles, Limited Slip Axle



**2000 DODGE 2500 QUAD CAB 4X4**  
Local 1 Owner Trade, 360 V8, Auto., A/C, Loaded, Laramie SLT, Asking **\$18,900**



**4X4 DUALY • 2001 DODGE 3500 QUAD CAB DUALY 4X4**  
Awesome Truck, 24 Valve Cummins Turbo, Diesel, 5 Spd., A/C, Comfy, Heated Leather Seats, Keyless Entry, CD Player, Tow Pkg., A Beauty, 60,000 Clean Miles • **\$28,900**



**5 SP DIESEL SUPER CAB**  
**4 WHEEL DRIVE • 96 FORD F250**  
Gorgeous Truck Drives New, Powerstroke Diesel, 5 Sp., A/C, Loaded XLT, 8,800 GVW, **\$16,900**



**\$23,900**  
**99 FORD F250 SUPER CAB 4x4**  
Short Bed, Nice to Drive, Loaded XLT, Powerstroke Turbo Diesel, Auto, A/C, Tow Pkg, Alloy Wheels, New Service & Insp

## FLATBEDS, WORK & DUMP TRUCKS



**DIESEL CARGO VAN**  
**2001 FORD E-350 SUPER CARGO VAN**  
Very Clean Inside & Out, Powerstroke, Auto, A/C, Heavy 9,400 GVW, Only 40,000 Miles, Remaining New Tk. Warranty



**98 IH ROLLBACK**  
Like New, Only 9,600 Miles, DT466E, 6 Cyl Diesel, 6 plus Trans. A/C, Power Windows & Locks, Tilt, Cruise 22 Foot Jer Dan Bed, 25,500 GVW. Under CDL.



**17 FOOT CUBE VAN**  
**97 FORD E-450 SUPER DUTY**  
Heavy 14,000 GVW, Rear Lift Gate, Powerstroke Turbo Diesel, Auto, AC, Local Trade, Only 58,000 Actual Miles



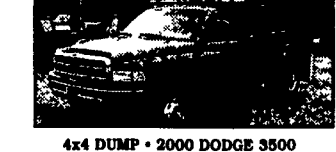
**450 Chassis 4 Wheel Drive**  
**2002 Ford Super Duty**  
Very Nice, Only 10,000 Miles, Remaining New Ford Warranty, Powerstroke Diesel, AT, AC



**16 FOOT BOX**  
**1999 FORD 550 SUPER DUTY**  
THE ONE TO HAVE  
Heavy 19,000 GVW Powerstroke Turbo Diesel, Auto, A/C, Vinyl Bench Seat, New Service & Insp. Will Sell As Chassis.



**DIESEL MOBILE WORKSTATION**  
**99 FORD E-350 HI-TOP CARGO VAN**  
AT, A/C & Roof A/C, Cabinets, Countertop, Electric Outlets, Lights, Generator and More **\$17,900**



**4x4 DUMP • 2000 DODGE 3500**  
Very Nice, Local 1 Owner, Cummins Turbo Diesel, AT, A/C, Tool Box, Tow Pkg, Chrome Wheels, A Real Good Looker, Only 43,000 Miles



**12 FOOT RACK BODY**  
**99 FORD F350 SUPERDUTY**  
Very Clean, 47,000 Miles, Powerstroke, Turbo Diesel, 6 Sp., A/C, Tow Pkg.



**ROLLBACK**  
**95 FORD 450 SUPER DUTY**  
18 Ft. Jer Dan Bed, Powerstroke Turbo Diesel, 5 Spd, A/C, Light Bar, Wheel Lift



**COMING**  
**2001 FORD F350 SUPER CAB WITH EBY FLATBED**  
Powerstroke Turbo Diesel, 6 Sp., A/C, Loaded XLT, Only 30,000 Miles, Great Tow Machine.



**GRAIN BODY**  
**2003 CHEVY 4500**  
12 Foot Body, Solid Sides, 16,000 GVW Duramax Diesel, Allison Auto, Pentil Hitch, Remaining New Tk Warranty Only 2,700 Miles  
**\$33,900**



**350 4 DOOR CHASSIS, 4 WHEEL DRIVE,**  
**2001 FORD XLT**  
Waiting for your Body, Only 19,000 Miles, Powerstroke Auto, A/C, Heavy, 11,500 GVW Dual Ram Wheels



**CREW CAB DUMP TK • 2000 FORD 450**  
Very Nice, Only 10,000 Miles, Powerstroke Turbo Diesel, Auto, A/C, Alloy Wheels, 3 Yd Dump Body



**22 FOOT BOX, REAR LIFTGATE**  
**2000 CHEVY KODIAK**  
Under CDL, 25,900 GVW, 3126 Cat Diesel, Allison Auto, A/C, Side Door.

Nicest Trucks In the East • Nicest Trucks In the East • Nicest Trucks In the East • Nicest Trucks In the East • Nicest Trucks In the East • Nicest Trucks In the East