

# WHEN AGRICULTURE IS YOUR LIFE,



Eby's complete line includes models for every requirement:

## BODIES

**Gooseneck Trailers** - Lengths 14-32', Widths 7', 7'6", 8' and 8'6".

**Bumper Hitch Trailers** - Lengths 12' - 18'

**Grain Bodies** -

Lengths to 24', plus landscape and general

purpose dumps to 12'

**Flatbed Bodies** - Lengths to 32' in 5 widths

**Landscape Bodies** - Lengths to 12'

## GOOSENECKS

## BUMPER HITCHES



Blue Ball, PA  
800-292-4752

For quality equipment and customer service that works as hard as you do, nobody offers more than EBY.

# THE EQUIPMENT CHOICE IS EBY.

24 HOUR  
PARTS &  
SERVICE

MON - 6AM  
SAT - 12 NOON

www.bergeys.com  
Ask For A Commercial  
Sales Specialist!

877-665-9369

# Bergey's

TRUCK EXCELLENCE SINCE 1924

## TRUCK CENTER

ROUTE 113, FRANCONIA, PA

• 3 Miles South from the Souderton Exit of Rt. 309  
• Minutes from Exit 31 of I-476 (N.E. of PA Turnpike)

GMC  
COMMERCIAL

Mack VOLVO

SALES HOURS

M-F 8:30am - 6pm  
Sat 8:30am - 12 noon

CALL TOLL FREE...

1-877-665-9369

CLEAN TRUCK • 1-877-665-9369



1995 HINO WITH 13' MORGAN VAN BODY

#1901A Model FA1415 13 Morgan Van  
Body Diesel 5-Speed Manual 14 050  
GVW New Inspection CLEAN TRUCK! **SALE PRICE \$7,950**

CLEAN TRUCK! • 1-877-665-9369



1994 VOLVO FE42 CAB CHASSIS

#7458 195" WB, 33,000 GVWR,  
Cat Diesel 6 Speed Trans. 433 000 miles,  
CLEAN TRUCK! MUST SEE! **SALE PRICE REDUCED TO \$6,900**

VERY CLEAN! • 1-877-665-9369



2000 GMC C-SERIES CAB CHASSIS

#7595, 3126 CAT-230HP 6-Speed  
33,000 GVW, Air Cond, 187" CA,  
VERY CLEAN! **SALE PRICE! \$23,900**

WORK READY REEFER! • 1-877-665-9369



1999 ISUZU NPR w/ 12' REEFER

#7686 350 C1D V-8 Gas Automatic Trans,  
12 Morgan Insulated Body CLEAN TRUCK! **SALE PRICE \$18,900**

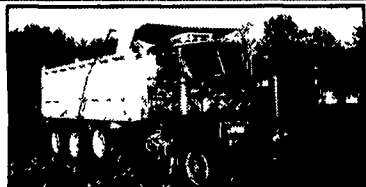
DUAL 100G. FUEL TANKS • 1-877-665-9369



1995 VOLVO WIA64TES

#7432 Volvo VE D12 engine @425 HP 9-Speed Trans  
Air Ride Susp 24 5 Tires Aluminum Wheels **SALE PRICE \$12,900**  
Dual 100 Gal Fuel Tanks VERY CLEAN!

PRICED TO SELL! • 1-877-665-9369



1987 DIAMOND RIO "GIANT"

#7343 NTC 300 Cummins, 10 Speed Trans,  
17'6" Aluminum Dump Body, RUNS GOOD! **MUST SELL! REDUCED TO \$12,900**

READY FOR SUMMER! • 1-877-665-9369



1997 ISUZU NPR w/ 12' REEFER

#7548 350 C1D V-8 Gas Automatic Trans 12 Morgan  
Insulated Body READY FOR SUMMER! **SALE PRICE \$13,900**

PRICED TO SELL! • 1-877-665-9369



1996 GMC C6500 "LO-PRO"

#7459 16 Dry Freight Van Body 200 CAT **SALE PRICE \$13,900**  
HP Diesel 6 Speed Trans 25 950 lb  
GVWR 214 000 miles MUST SELL!

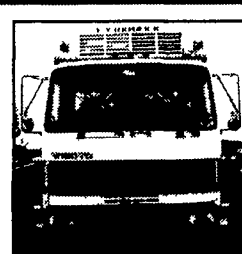
PRICED TO SELL! • 1-877-665-9369



2000 VOLVO VNL660

#7608, Detroit Diesel - 500 HP  
13 Speed Air Ride Jake Brake 215 WB  
Upper & Lower Bunks Extended Chassis  
Fairings 275/80R24 5 Tires **SALE PRICE \$35,900**

26' REEFER BODY • 1-877-665-9369



1996 VOLVO  
FE42

#7590  
26 Reefer Body  
& TK RDII Unit  
33 000 GVWR  
VED7 Engine @  
230HP 6 Speed

**SALE PRICE \$19,850**

22' REEFER BODY • 1-877-665-9369



'98 GMC 22' REEFER

#7596 1998 GMC 22' Reefer Body & TK RDII 50SR Unit  
25 950 GVWR Cat Diesel 6 Speed Trans **SALE PRICE \$32,900**

CAB CHASSIS! • 1-877-665-9369



1999 GMC CHASSIS

#7594 Chassis Will Take 24' Body  
33 000 GVWR 230HP Cat Diesel  
Allison 5 Speed Trans, 202 000 Miles **SALE PRICE REDUCED TO \$22,500**

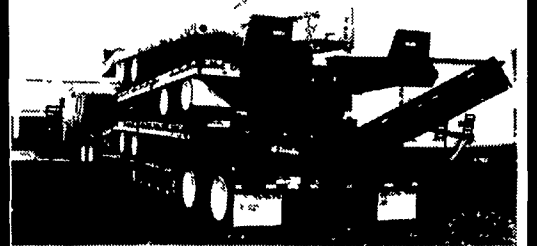
TRY BERGEY'S... "TRUCK SPECIALISTS SINCE 1924!"

PRIOR DEALS EXCLUDED ALL PRICES INCLUDE FREIGHT DEALER PREP ANY APPLICABLE FACTORY REBATES & FACTORY EQUIPMENT DISCOUNT PACKAGE (IF APPLICABLE) ANY COUPONS & BERGEY DISCOUNT TAX LICENSE & DOCUMENT FEES COST EXTRA VEHICLES SHOWN FOR ILLUSTRATION PURPOSES ONLY NOT RESPONSIBLE FOR TYPOGRAPHICAL ERRORS PLEASE PRESENT AD FOR ADVERTISED PRICES PRIOR TO PURCHASE BERGEY'S INC

NOW IS THE TIME TO BUY  
YOUR TRAILER! SEE US  
AT BINKLEY & HURST!

Place Your Order Now and Be Ready  
For Spring - Good Financing Plans!  
Binkley & Hurst Bros. Offers...

Eager Beaver DISCOUNT SALE  
ON  
NEW HIGH TENSILE TRAILERS



Eager  
Beaver

NEWLY IMPROVED TRAILER = GREATER VALUE!

New Upgraded Features  
of the Easy Loader Series



WIRING HARNESS  
• 100% SEALED  
• USA Star PL'US  
POSITIVE LOCK UNDER SEAL



3-LEAF SUSPENSION SYSTEM  
• RATED @ 50,000 LB TANDEM 75,000  
LB TRIPLE  
• STRONGER  
• LONGER LIFE



HUB PILOTED DISC WHEELS  
• HIGHER WHEEL RATING  
• OUTDOOR DRUMS FOR EASIER MAIN  
TENANCE  
• FASTER EASIER MOUNTING  
• ELIMINATE WHEEL WOBBLE



L.E.D. LIGHTS  
• BRIGHTER WITH NO FILAMENT TO  
BURN OUT  
• VIRTUALLY UNLIMITED LIFE  
• SHOCK ABSORBING CASING

EASY LOADER What could be easier?

We've improved our trailers, redesigned to meet your needs. No other trailer company provides more unique standard features than Eager Beaver. Look close, because details make the difference.

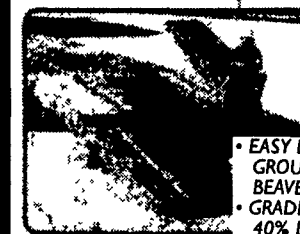
Like our 8-Degree Locking Ramp and optional set of aluminum extension ramps. Power rollers and high center of gravity equipment that allows a 15-degree approach.

So when you are thinking about an investment in your business, think Eager Beaver.



20 Ton

In Stock  
25XPT Easy Loader:  
25 Ton Capacity  
Tri-Axle, 89"  
Loading Angle  
• Capacity 50,000 lbs



LIGHT  
WEIGHT  
WOOD  
RAMPS

• EASY LIFTING FROM THE  
GROUND OR OFF THE  
BEAVERTAIL  
• GRADE 80 HIGH TENSILE STEEL  
40% LIGHTER  
• DOUBLE ACTING SPRINGS

Binkley & Hurst Bros. Inc.  
EAGER BEAVER TRAILERS

10HDB 10 Ton Elec. Brake  
Tag-A-Long ..... **\$7,950.00**  
10HA-PT 10 Ton Air Brake  
Tag-A-Long ..... **\$10,300.00**  
20XPT 20 Ton Air Brake  
Tag-A-Long ..... **\$13,941.00 W/FET**  
25XPT 25 Ton Air Brake  
Tag-A-Long ..... **\$18,433.00 W/FET**

CALL Dean M. Weinhold  
at (800)414-4705

All Trailers In Stock  
Colors: CAT YELLOW, RED, Blue, Black

JUST ARRIVED

35GSL/S4S In Stock  
35 Ton Detachable Gooseneck  
Non-Ground Engaging



• CAPACITY 70 000 Lbs  
• Trailer Weight 15,500 Lbs  
• Overall Width 102", Length 43'  
• Deck Width 102", Length 22", Height 26"  
• Tires Eight 255/70R22 5 (H) Radial

BINKLEY & HURST  
BROS. INC.

133 Rothsville Station Rd.  
P.O. Box 0395, Lititz, PA 17543-0395  
(717) 626-4705 1-800-414-4705 Fax (717) 626-0996