

35

TRUCKS  
AND  
TRAILERS

# DIESEL PERFORMANCE



**Chevy Duramax:** Adjustable Module 30 to 90 HP increase!  
AFE performance air filter assy

**Dodge 24 Valve:** Adjustable Module 40 to 120 HP increase!  
Exhaust & intake upgrades

**Powerstroke:** Performance chips 40, 60, 80 hp.  
Programmed while you wait!!

**SPECIALS:**

- 4" EXHAUST SYSTEM FORD OR DODGE \$575.00
- GMC 6.5L LONG BLOCKS \$2900.00
- Exhaust brakes CALL
- Magnum AFE air filter assy '02 Powerstroke less 10%
- Funnel RAM AFE air filter assy Dodge 94-01 less 10%
- Magnum AFE air filter GMC DURAMAX less 10%
- Digital Pyrometer kit, Boost gauge & gauge pod \$399.00

From The Diesel Specialists For Ove. 45 years

**Penn Diesel Service Co.**  
Interstate 81 Exit 77, Harrisburg, PA  
(800) 535-2913



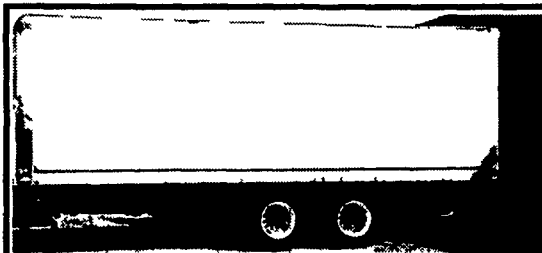
**Roll-Rite** Elmers Garage  
East Berlin PA 717-292-3030  
Sales Installations Parts

the original polished-aluminum and the original direct-drive electric tarp system

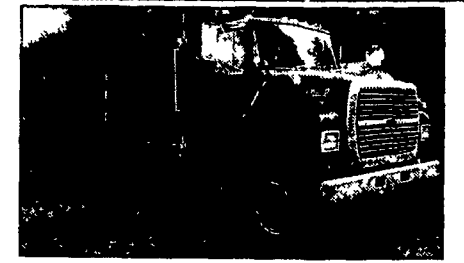
**Automatic & Semi-Automatic Front-to-Back & Side-to-Side**

- \* Farm Dump
- \* Stone Dump
- \* Light Truck
- \* Landscapers
- \* Silage Trucks
- \* Dump Trailers
- \* Walking Floors
- \* Hopper Bottoms
- \* Roll-Offs
- \* On-site Mixers

Call Now For More Info and Prices



**1995 Morgan Box, 26' Overhead Door, Good Condition, \$1,295.**  
717/ 532-6707



**1989 LN9000 FORD**  
L10-300 Cummins 9 Sp., AB, PS, Double framed, 16F 40 R, Walking beam suspension, NO RUST! Not a stretched tractor \$14,500 Do It Yourself Kit Scott 23' Silage & Grain Body w/3000 Hoist & Air Controls, \$9,375

**1988 FRUEHAUF**

All Aluminum Flat Trailer, 44', Air Ride, Spread Axle, Winches & Tie Downs. Good arch! \$4,875 OBO

**1979 PAYSTAR IH**

New Aluminum Cab - 1989, Rebuilt Cummins Jake 9 Sp., Central Hyd, 13' Steel Bed, Runs Good, 58,400 GVW \$7,500 OBO

**1990 CH 612 MACK**

Tractor, Day Cab, Single Axle, 300 E-6 Engine, 5 Spd., Air Brakes, PS. \$3,750

CALL FOR DETAILS!

Scott Distributor

**SUNNY ACRE SALES**

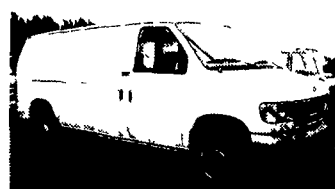
R.D.#2 BOX 266 TYRONE, PA 16686 814/742-8202 814/742-7303

## PINE TREE MOTORS

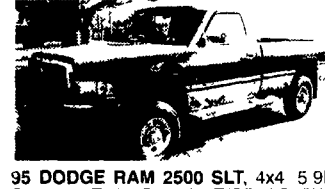
2407 W. Main St., Ephrata 17522

717-738-2242

Over 75 Vehicles To Choose From [www.pinetreemotors.com](http://www.pinetreemotors.com)



**98 FORD E350 CARGO VAN, 7.3L Power Stroke Diesel AT/OD A/C PS PB (ABS) Airbag Delay Wipers, AM/FM Radio Shelves Divider 9500 GVWR Side Sliding Door, Fresh Transmission Service White 64 000 Miles \$12,900**



**95 DODGE RAM 2500 SLT, 4x4 5.9L Cummins Turbo Diesel AT/OD AC PW PDL, Tilt Cruise AM/FM Cass Towing Package, Champagne/Green 118 000 Miles \$12,900**



**01 DODGE RAM 3500 SPORT DUALLY, 5.9L 24 Valve Cummins Turbo Diesel 6 Spd 4x4 Quad Cab PW PDL PWR Mirrors Tilt Cruise Dual Airbags AM/FM Cass & CD Pwr Heated Seats Leather 6 Pass Towing Package Black 61 000 Miles \$28,900**



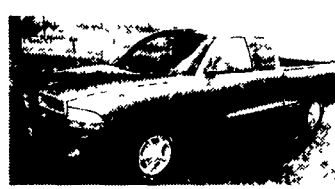
**01 CHRYSLER TOWN & COUNTRY EX 3.8L F1 V6 AT/OD Dual A/C & Heat P/W PDL Keyless Pwr Seat Dual Airbags AM/FM Cass/CD Tilt Cruise Alloy Wheels Twin Sliding Doors Power Hatch Privacy Glass Roof Rack PS PB(ABS) Silver 49 000 Miles \$15,495**



**00 JEEP GRD CHEROKEE LAREDO 4.0L F1 6 Cyl AT/OD 4x4 A/C PW PDL Keyless Tilt Cruise Pwr Mirrors PS PB(ABS) AM/FM Cass Dual Airbags Delay Wipers Rear Defroster Privacy Glass Red 77 000 Miles \$11,995**



**00 CHEV TAHOE LS 5.3L F1 Vortec V8 AT/OD 4x4 Dual A/C PW PDL Keyless Tilt Cruise Dual Airbags AM/FM CD 6 Pass PS PB(ABS), Running Boards Privacy Glass, Roof Rack Alloy Wheels Rear Defroster Power Windows 75 000 Miles \$19,900**



**98 DODGE DAKOTA SPORT EXT CAB, 2WD 3.9L F1 Magnum V6 5 Spd AC Tilt, AM/FM Cass Alloy Wheels Blue, 70 000 Miles \$8,900**



**99 CHEV S10 EXT CAB, 4.3L F1 Vortec V6, AT/OD, 4x4, Dual Airbags, Tinted Glass, Alloy Wheels, AM/FM Cass, PS, PB(ABS), Tilt Cruise, Bed Liner, Pewter, 77,000 Miles \$9,900**



**00 FORD RANGER XLT, 3.0L F1 V6, AT/OD, A/C, 2WD, PS, PB, Dual Airbags, Delay Wipers, AM/FM CD Bed Cover, Sliding Rear Window, Maroon, 87,000 Miles \$6,995**

**FINANCING AVAILABLE**

CARS		TRUCKS	
02 MITSUBISHI GALANT ES, AT, AC	\$11,900	99 FORD E250 CARGO VAN	\$9,800
01 CHEV IMPALA, AT, AC 4DR	\$9,450	99 CHRYSLER TOWN & COUNTRY LX	\$8,900
00 PONTIAC GRAND PRIX GT, AT, AC	\$10,495	99 DODGE CARAVAN	\$5,900
00 CHEV CAVALIER Z24, AT, AC	\$9,900	98 FORD E350 CARGO VAN	\$10,900
00 TOYOTA COROLLA VE, AT, AC	\$8,800	98 FORD E350 CARGO VAN	\$12,900
99 VW JETTA GL, AC, 5 SPD	\$10,495	98 FORD WINDSTAR GL	\$7,995
99 BUICK CENTURY CUSTOM, AT, AC	\$7,495	98 CHEV VENTURE LS	\$8,900
98 FORD MUSTANG GT, V8, AT, AC	\$11,495	98 GMC SAVANA G1500 CARGO	\$8,995
98 HONDA CIVIC 5 SPD, AC	\$7,995	98 CHEV ASTRO CARGO	\$7,995
98 DODGE STRATUS, 4DR, AC	\$6,500	98 FORD E150 CLUB WAGON XLT	\$8,995
98 DODGE NEON, AT, AC	\$5,500	97 OLDS SILHOUETTE GLS EXT	\$9,900
97 VW JETTA GL 5 SPD A/C	\$6,500	96 DODGE B3500 SLT, 15 PASS	\$9,800
97 DODGE INTREPID AT AC	\$5,995	95 FORD E350 EXT CARGO	\$6,900
96 VW GOLF GL 5 SPD AC	\$4,995	94 GMC SAFARI SLE EXT AWD	\$5,995
96 DODGE INTREPID AT AC	\$2,995	94 DODGE B150 8 PASS	\$3,900
95 HONDA ACCORD LX AT AC	\$7,995	94 PLYMOUTH VOYAGER	\$2,500
94 CHEV CORSICA, AT, AC	\$1,995		
93 MITSUBISHI ECLIPSE GS, AT, AC	\$3,900		
90 HONDA ACCORD LX, AT, AC	\$4,800		
90 PONTIAC BONNEVILLE LE AT	\$1,995		
SPORT UTILITIES		TRUCKS	
00 CHEV TAHOE LS, 4X4	\$19,900	01 DODGE RAM 3500 SPORT DUALLY QUAD CAB, 6 SPD 4X4 \$28,900	
00 DODGE DURANGO SLT 4X4 3RD SEAT	\$17,900	01 DODGE RAM 1500 WS, AT AC LOW MILES	\$11,900
00 DODGE DURANGO SLT, 4X4 3RD SEAT	\$15,995	00 DODGE DAKOTA SLT QUAD CAB, AT, AC, 2WD	\$12,800
00 DODGE DURANGO SLT, 4X4, 3RD SEAT	\$11,900	00 DODGE DAKOTA SPORT, 2WD	\$8,900
00 JEEP GRD CHEROKEE LAREDO 4X4	\$11,995	00 FORD RANGER XLT 2WD, AT	\$6,995
00 CHEV 310 BLAZER LS 4X4	\$10,495	99 DODGE RAM 2500 SLT 4X4	\$10,900
99 JEEP GRD CHEROKEE LAREDO 4X4	\$14,995	99 FORD F250 SUPER DUTY XLT, AT, AC	\$12,900
99 JEEP GRD CHEROKEE LAREDO 4X4	\$13,500	99 FORD F250 SUPER DUTY, UTILITY TOPPER, 4X4,	\$12,500
99 MITS MONTERO SPORT XLS 4X4	\$12,900	99 FORD RANGER XLT, 4X4, QUAD CAB	\$10,900
98 DODGE DURANGO SLT, 4X4, 3RD SEAT	\$12,900	99 CHEV S10 LS, AT	\$9,900
97 GMC SUBURBAN SLT, 4X4	\$14,500	99 CHEV C1500 SILVERADO	\$8,995
97 GMC YUKON SLT 4X4	\$13,500	99 FORD F250 SD, 2WD AT AC	\$7,995
97 JEEP CHEROKEE SPORT, 4X4	\$4,995	99 CHEV S10 LS 5 SPD, AC 2WD	\$7,995
96 CHEV TAHOE LS 4X4	\$11,900	99 DODGE RAM 2500 AT AC 2WD	\$7,800
96 GMC JIMMY SLE 4DR 4X4	\$7,995	98 DODGE RAM 1500 SPORT, QUAD CAB 4X4	\$11,900
95 GMC SUBURBAN SLE 4X4	\$11,900	98 DODGE DAKOTA SPORT EXT CAB, 2WD	\$8,900
VANS		TRUCKS	
02 DODGE B3500 PREM DECOR 15 PASS	\$15,900	01 DODGE RAM 3500 SPORT DUALLY QUAD CAB, 6 SPD 4X4 \$28,900	
01 DODGE CHRYSLER TOWN & COUNTRY EX	\$15,495	01 DODGE RAM 1500 WS, AT AC LOW MILES	\$11,900
01 DODGE B3500 PREM DECOR 15 PASS	\$13,900	00 DODGE DAKOTA SLT QUAD CAB, AT, AC, 2WD	\$12,800
00 CHRYSLER TOWN & COUNTRY LX	\$13,900	00 DODGE DAKOTA SPORT, 2WD	\$8,900
00 DODGE GRD CARAVAN SE	\$8,500	00 FORD RANGER XLT 2WD, AT	\$6,995
00 FORD E350 CARGO VAN	\$11,500	99 DODGE RAM 2500 SLT 4X4	\$10,900
00 FORD WINDSTAR LX	\$9,900	99 FORD F250 SUPER DUTY XLT, AT, AC	\$12,900
99 FORD CLUB WAGON EXT	\$10,900	99 FORD F250 SUPER DUTY, UTILITY TOPPER, 4X4,	\$12,500
		99 FORD RANGER XLT, 4X4, QUAD CAB	\$10,900
		99 CHEV S10 LS, AT	\$9,900
		99 CHEV C1500 SILVERADO	\$8,995
		99 FORD F250 SD, 2WD AT AC	\$7,995
		99 CHEV S10 LS 5 SPD, AC 2WD	\$7,995
		99 DODGE RAM 2500 AT AC 2WD	\$7,800
		98 DODGE RAM 1500 SPORT, QUAD CAB 4X4	\$11,900
		98 DODGE DAKOTA SPORT EXT CAB, 2WD	\$8,900
		98 CHEV S10 LS 5 SPD, AC 2WD	\$6,995
		98 DODGE RAM 1500 SLT 4X4 AT, AC	\$11,900
		98 ISUZU NPR 15 BOX AT	\$11,900
		98 DODGE DAKOTA SPORT EXT CAB, 4X4	\$10,900
		97 FORD F350 XLT EXT CAB DUALLY 2WD 5 SP	\$12,900
		97 DODGE DAKOTA SPORT EXT CAB 4X4	\$8,995
		97 DODGE DAKOTA SPORT 2WD 5 SPD	\$4,995
		96 CHEV C2500 SILVERADO EXT CAB UTILITY BODY	\$10,900
		96 DODGE RAM 1500 SLT 2WD	\$8,500
		96 GMC K1500 SLE EXT CAB 4X4 AT AC	\$11,900
		95 DODGE RAM 2500 SLT 4X4 CUMMINS TURBO DIESEL	\$12,900
		95 FORD F350 BOX TRK POWER STROKE DIESEL AT	\$10,900
		94 CHEV C3500 HD UTILITY BUCKET TRUCK AT	\$10,900
		93 CHEV 3500 HD UTILITY BUCKET TRUCK AT	\$10,900
		91 CHEV C3500 HD AT 3/4 BODY/FLAT BED	\$7,995

**TRAILER ENTERPRISES, INC.**

ON SITE - FULL SERVICE HITCH & REPAIR FACILITY.  
MAKING SURE YOU GET THE BEST IN THE INDUSTRY!

- \* MERHOW - EBY - MORITZ
- \* BISON & OTHERS
- \* GOOSENECK FLATBEDS
- \* CARGO TRAILERS
- \* AUTO CARRIERS
- \* LAWN SERVICE & UTILITY
- \* INDUSTRIAL & EQUIPMENT

• HOURS •  
Monday - Friday 8 to 5; Saturday 9 to 12

See us at [www.trailerenterprises.com](http://www.trailerenterprises.com)

MERHOW VERTILE 2-HORSE W/DRESSING ROOM ALL ALUMINUM See Them At [www.merhow.com](http://www.merhow.com)

MORITZ CBS 6' X 13' STOCK TRAILER \$3,690 Check them out at [www.moritzinternational.com](http://www.moritzinternational.com)

BRI-MAR DUMP TRAILERS

20' X 7' MAVERICK MODEL GOOSENECK (SHOWN W/OPT HUB CAPS) \$10,700

"BRI-MAR" - YOU WON'T BUY THEM FOR LESS ANYWHERE! GUARANTEED!

**TRAILERS ARE OUR BUSINESS!**