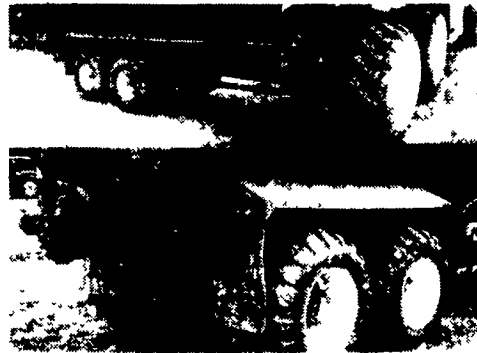


We make trucks work in the field with **ALLIANCE** flotation tires



High-Flotation
#328

High-Traction
Flotation
#331

CUSTOM HEAVY DUTY WHEELS & TIRES FOR SPOKE OR BUDD HUBS. WE CAN MAKE WHAT YOU WANT!

Deller Equipment 800-640-4448

Somerset & Chambersburg, PA 814-629-9893

Stop Spinning Your Wheels, Call Us Today!

LESHER SALES & SERVICE
2700 Cumberland St. Lebanon, Pa. (Route 422 West)

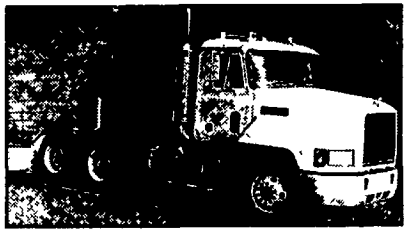


717-273-4535
website: www.leshermack.com

New Trucks

PRE-EPA 02

- (2) 2004 C613 Day Cab, E7-427, 10-Spd., Air Susp., 169 W.B.
- (2) 2004 C613 Sleeper, E7-427, 10 Spd., 70 Midrise, Air Susp., 222 W.B.
- (2) 2003 CV713 Granite, A1-427-Aset, RTO 14908LL, Long Wheel Base: (1) 265", (1) 275"
- (2) 1999 CH613, 210 W.B. E7-427, 10 Spd., 50 inch Flat Top, 417 K Miles, 430 K Miles



Used Trucks

- (1) 1995 CH613, 42 in. Highrise (Sleeper Box can be removed for min. cost.)
- (1) 1995 CH613, Day Cab E7-350, 9 Spd, Air-ride, 4.17 Ratio, 192 in. W.B. 550,000 Miles

Many other Trucks in Stock - Call for Details

Mansfield Truck & Equipment Co., Inc.

4864 W. Roosevelt Hwy. (Rt. 6) Mansfield, PA 16933

Phone (570)723-1834 Fax (570)723-1823

Heavy Truck Parts - Custom Truck Bodies - Snow Control Equipment
Complete Service Department



Case 680 C Backhoe, Runs Good



1992 Chevy Conversion Van, Loaded



International Log Truck w/Prentice 120 Loader, Continuous Rotation Grapple



Lull Forklift



1988 Pete Cat, 425hp, 15 Spd. Trans., Big Bunk, 89,000 On Rebuild



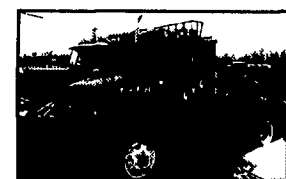
Mack Concrete Mobile



Old White Wrecker, Runs



Mack B-Model Wrecker, Runs



6x6 Army Truck w/International Engine



Mack Toter



Chevy Pole Setting Truck, All Wheel Drive

- 1990 Mack RD 690 long double frame 18,000 lb. front axle, 44,000 lb. rears Mack 250 hp engine 5 speed Mack trans. Prentice 120 Log loader
- (3) Hough Wheel loaders; 1 runs, 1 has backhoe attachment, 1 is a parts machine
- Lima 703 Dragline complete, 3 buckets, 850 Cummings engine
- 1971 Ford Cargo van runs and looks good
- 10 ton roller with gas engine
- Early 70's Dodge 1 ton dump 2 wheel drive, runs and drives
- Early 70's GMC Coal delivery dump truck 5 speed trans, 2 speed rear, good hydraulics, cab rusted, no engine



99 FORD F350 CREW CAB DUALY Power Stroke Diesel, AT, XLT, A/C, Most Options, 56K Miles, White



95 FORD F800 12 FT. DUMP 26K GVW, 370 V8, 5-Spd., 2-Spd. Rear, 35K Miles, Red



1997 FREIGHTLINER FL70, 220 HP 3126 CAT, 6-Spd., Hauler Conversion and Towing Pkg., 2001 HALLMARK 40 ft., 102" wide TRAILER, Alum. Floor, 12 volt 110 Elect., Lots of Cabinets.



94 DODGE RAM 2500 4X4 Reg. Cab, Cummins Turbo Diesel, SLT, AT, A/C Most Options, 137K Miles, Black #D378



97 FORD F350 10 FT. FLATBED 2WD, 5-Spd., 351 V8, A/C, 16K Miles, Red #F2076



99 FORD F350 CREW CAB 4x4 Power Stroke Diesel, AT, A/C, XL Trim, 74K Miles, White, #F2063



99 DODGE 2500 QUAD CAB 4X4 Cummins Diesel, SLT, AT, 33K Miles, Green #D384 2 In Stock



97 GMC TOPKICK 6500 CAT Diesel, Allison Automatic, 26,900 GVW, Rear Sofa Bed and Sleeper Conversion, Both Hitches, Ready to Tow. COME & GET IT!! #G235



2000 CHEVY 3500 HD 15000 GVW, Contractor Dump, 5 Spd., 454, 37,000 Mi.



95 FORD F800 16 FT. STAKEBODY W/LIFTGATE 5 9-230HP Diesel, 7-Spd., Only 33K Miles, 30K GVW, White



96 FORD F350 CREW CAB DUALY-POWER STROKE DIESEL 2 WD, XLT, AT, A/C, Most Options, 94K Miles, Red

Bobby Gerhart's Truck World
2400 E. Cumberland St. Rt. 422 Lebanon, PA 17042
717-273-7995
Mon - Fri 9-5, Sat 9-3



01 DODGE 2500 4X4 Cummins Diesel HD, 6-Spd., A/C, SLT, Most Options, 38K Miles, Red



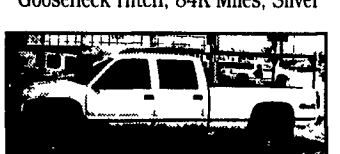
97 GMC TOPKICK 6500 CAT Diesel, Allison Automatic, 26,900 GVW, Rear Sofa Bed and Sleeper Conversion, Both Hitches, Ready to Tow. COME & GET IT!! #G235



2000 GMC 2500 SLE UTILITY BODY 2 WD, 350 V8, AT, A/C, Most Options, Gold, 32K Miles #G241



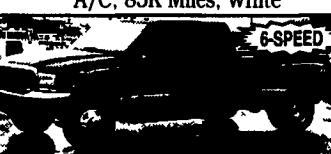
99 FORD F350 4X4 XLT 9 FT STAKE BODY Pwr Stroke Diesel, 6-Spd., A/C, Most Opt Gooseneck Hitch, 84K Miles, Silver



2000 CHEV. 3500 CREW CAB 4x4 AT, 350 V8, A/C, Cass, 44,000 Miles, Ladder Rack, White, #C641



95 DODGE 3500 4X4 12 Ft. Stake Body Dump Pwr. Angle Plow, 360 V8, 5-Spd., A/C, 85K Miles, White



2000 FORD F350 CREW CAB DUALY 4x4, Power Stroke Diesel, 6-Spd., XLT, A/C, Most Options, 55K Miles, #F2064



00 FORD F250 QUAD CAB 4x4 AT, XLT, Power Stroke Diesel, CD Player, Alloy Wheels 67K Miles, White #F2070



00 FORD F350 4X4 XLT Power Stroke Diesel, AT, A/C, Most Options, 42K Miles, White #F2079



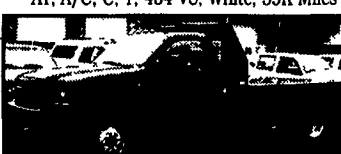
96 INTERNATIONAL 4700 CAB/CHASSIS LoPro T444E Diesel, 4 Spd, Allison AT, 145 WB, 84 CA, 21,000 GVW, A/C, 72K Miles, 2- To Choose From



1995 CHEV TOPKICK DUMP Allison AT, V8, 21,000 GVW, White, Low Miles



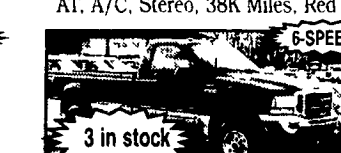
00 CHEV 3500 WALK-IN UTILITY BODY AT, A/C, C, T, 454 V8, White, 59K Miles



99 FORD F450 10 FT. FLATBED DUMP 2WD, Power Stroke Diesel, AT, A/C, 75K Miles, Red #F2075



00 FORD F350 4X4 Power Stroke Diesel, Power Angle Plow, AT, A/C, Stereo, 38K Miles, Red



2000 FORD F250 4x4 XLT 6- Spd, Power Stroke Diesel, 93K Miles, Blue & Silver, Most Options #F2069



99 GMC 3500 CREWCAB DUALY 9 FT. FLATBED w/Both Hitches, 454, AT, PS, PB, A/C, 29,000 Miles, White, Perfect Condition! #G233