

Belknap Livestock

Belknap, Pa.

Report Supplied By USDA

May 7, 2003

CATTLE 161...(PDA).

STEERS: few Low Choice 1-3 1114-1260 lbs 73.25-76.75, few Select 1-2 68.50-73.00.

HOLSTEIN STEERS: few Choice 2-3 1108-1142 lbs 68.50-71.00.

HEIFERS: few Choice 1-3 62.00-69.50, few Standard 1-2 52.00-59.00.

COWS: Breakers 75-80% lean 40.00-46.00, Boners 80-85% lean 37.25-41.00, Lean 85-90% lean 34.00-38.25. Shells 33.75 and down.

BULLS: few Yield Grade 1 1340-1472 lbs 48.00-48.25, Yield Grade 2 1212-2470 lbs 41.50-45.25, one 37.50.

FEEDER CATTLE: STEERS: few Medium 1 530-670 lbs 76.50-80.50; HEIFERS: Medium 1-2 300-500 lbs 64.00-76.00, 500-700 lbs 57.50-69.50, few 700-800 lbs 51.00-64.50; BULLS: few Medium 1 330-680 lbs 59.00-61.00, few Medium and Large 2 470-610 lbs 51.00-55.00.

CALVES 71...VEALERS: few Choice 270-275 lbs 104.00-107.00, one Good 254

lbs 68.00, Standard and Good 70-110 lbs 27.00-45.00, few Utility 50-80 lbs 20.00-28.00. FARM CALVES: No 1 Holstein bulls 95-130 lbs 120.00-150.00, No 2 80-135 lbs 65.00-110.00; couple No 2 Holstein heifers 98 & 112 lbs 275.00 & 280.00.

Few beef cross bulls and heifers 80-95 lbs 115.00-120.00.

HOGS 37...BARROWS AND GILTS: few 45-50% lean 228-277 lbs 35.00-40.00, 40-45% lean 213-294 lbs 33.00-34.50.

SOWS: 1-3 335-540 lbs 21.00-27.50.

BOARS: couple 692 & 702 lbs 6.00 & 7.00, couple 264 & 266 lbs 10.00 & 22.00.

FEEDER PIGS 46...1-3 45-70 lbs 33.00-42.00, 30-40 lbs 29.00-40.00 per cwt.

SHEEP 28...SLAUGHTER LAMBS: Choice 40-75 lbs 117.50-135.00, small lot Good and Choice 55 lbs 102.50. Slaughter Sheep: few 11.00-22.00, few Yearlings 35.00-36.00.

GOATS 19...(All goats sold by the head with weights estimated). Kids: Selection 2 few 20-40 lbs 20.00-37.00, few 40-60 lbs 41.00. Nannies: 50-100 lbs 14.00-33.00. Billies: one 80 lbs 41.00.

Four States Livestock Monday Sale

Hagerstown, Md.

Report Supplied By Auction Monday, May 5, 2003

SLAUGHTER COWS: 38 HEAD, ACTIVE BIDDING. BREAKERS 41.00-44.00, 1 YOUNG AT 49.00, BONE-RS 39.00-43.00, LEAN 36.00-40.00. THIN AND LIGHT 36.00 DOWN.

BULLS: YG+N2 1276 LBS. AT 49.75. FED STEERS: 35 HEAD, BETTER QUALITY OFFERED. HIGH CHOICE TO PRIME 1300-1400 LBS. 80.50-83.00, 4 HEAD 1500-1600 LBS. 76.00-79.00, CHOICE 2-3 1200-1450 LBS. 78.00-81.75, SELECT 1322 LBS. AT 70.00, SELECT TO LOW CHOICE HOLSTEINS 1100-1600 LBS. 54.00-60.00.

FED HEIFERS: 1 PRIME 1360 LBS. AT 81.50, LOW DRESSING CHOICE 1388 LBS. 75.50, HOLSTEIN HEIFER-RETES 1200-1650 LBS. 50.00-54.25.

CALVES: 100 HEAD, GOOD SLAUGHTER. 80-100 LBS. 35.00-43.00; HOLSTEIN BULLS RETURNING TO FARM, STEADY. +N1 95-120 LBS. 130.00-150.00, 82-94 LBS. 122.00-135.00; +N2 95-120 LBS. 100.00-130.00, 80-94 LBS. 70.00-120.00; HOLSTEIN HEIFERS NO +N1S OFFERED. +N2

80-100 LBS. 200.00-250.00, 60-80 LBS. 100.00-125.00; BEEF X BULLS AND HEIFERS 60-100 LBS. 95.00-117.00.

BUTCHER HOGS: +N1 AND 2 220-250 LBS. 34.50-36.50, +N1 AND 3 270 LBS. AT 22.00.

SOWS: 450 LBS. AT 22.00.

STOCK CATTLE: 40 HEAD. STEERS, FEW OFFERED. 200-400 LBS. TO 91.00, 1 HEREFORD AT 62.00.

HEIFERS: SCARCE.

BULLS: 200-400 LBS. 77.00-80.00, 500-700 LBS. 67.00-73.00.

LAMBS: GOOD TO CHOICE 40-70 LBS. 115.00-120.00, WOOLED 150 LBS. TO 66.00.

GOATS: 14 HEAD. MEDIUM 30.00-55.00, SMALL KIDS 10.00-25.00, FEW TO 36.00.

PIGS AND SHOATS: CULLS AND BOARS BY THE HEAD 60 LBS. TO 11.00, 80-100 LBS. 30.00; BY THE LB. 110-160 LB. BOARS 10.00-18.00, FEMALES 21.00-26.00.

Northeast Eggs

Atlanta, Georgia

Report Supplied by USDA

May 8, 2003

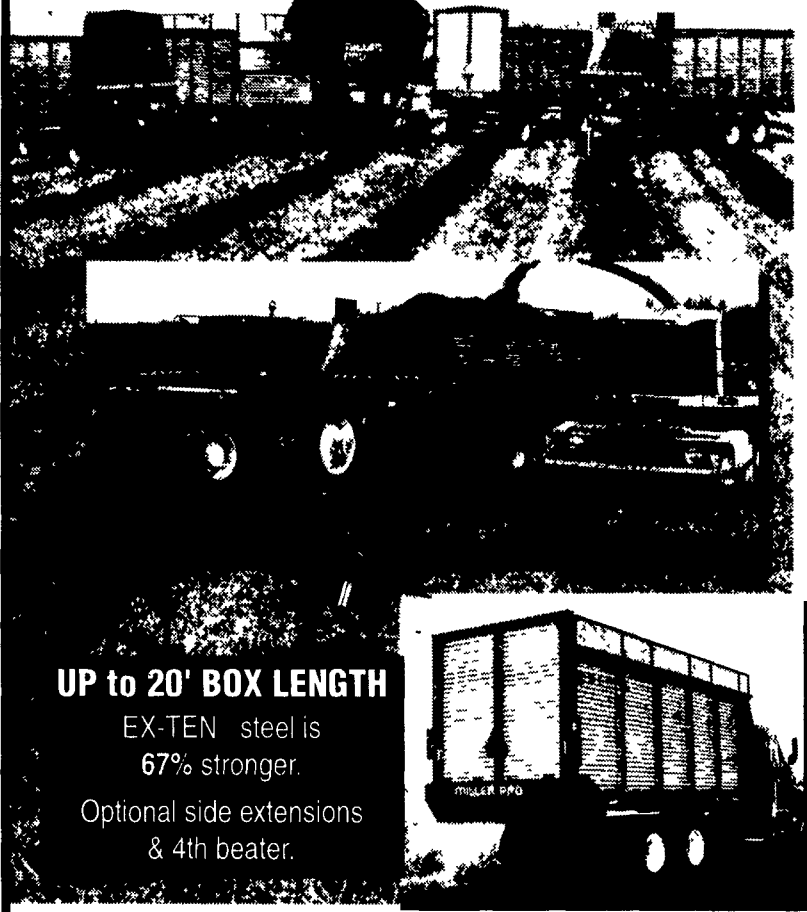
Prices remained unchanged on all sides. The market tone was generally steady and continued to test at current market values. Demand was mostly light to moderate. Supplies were adequate to available for immediate trade needs. Breaking stock offerings were adequate for the fair demand. Light type fowl were fully sufficient.

PRICES TO RETAILERS, SALES TO VOLUME BUYERS, USDA GRADE A AND GRADE A, WHITE EGGS IN CARTONS, WAREHOUSE, CENTS PER DOZEN. RANGE: MOSTLY EXTRA LARGE 56-69, 58-62; LARGE 51-66, 56-60; MEDIUM 48-63, 53-55

NORTHEAST AREA: CT, DC, DE, MA, MD, ME, NH, eastern NJ, eastern NY, PA, RI, Northern VA, and VT

MILLER PRO

More models. New configurations. More capacity.



UP to 20' BOX LENGTH
EX-TEN steel is 67% stronger.
Optional side extensions & 4th beater.

NEW 5300 SERIES

High capacity forage handling...

A field full of choices, all designed to match your need for speed, capacity and convenience.



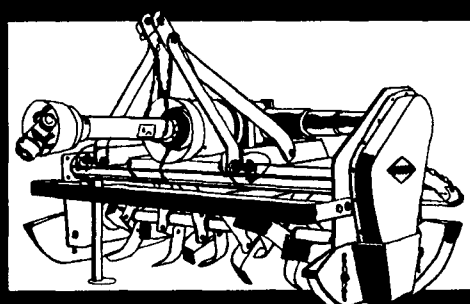
...and a blower that can put it all away!

NEW! Series II Forage Blower:
Unique Power Paddle design maximizes velocity and capacity. Fills 100' silos.

get more for your money www.millerprofarm.com

- ALLEN FARM EQUIPMENT CO., INC.
Schaghticoke, NY
518-682-7275
- CLUGTOWN AG & TURF, INC.
Chambersburg, PA
717-263-4103
- FOSTERDALE EQUIPMENT CORP.
Cochecton, NY
845-932-8611
- LONGENECKER'S INC.
Williamsburg, PA
814-793-3731
- MESSICK FARM EQUIPMENT
Abbottstown, PA
717-256-0517
- Elizabethtown, PA
717-367-1319
- STANLEY'S FARM SERVICE
Klingerstown, PA
570-848-2068
- ZIMMERMAN FARM SERVICE
Bethel, PA
717-933-4114

Want more than a garden variety tiller?



Try the Kuhn Economically-Priced EL 32 Power-Tiller.

- ◆ Three sizes to choose from, 42", 50", & 58"
- ◆ 30 HP rating (continuous)
- ◆ Easily offset up to 17"
- ◆ Kuhn offers 39 models of tillers from 30 to 200 HP.

(717) 354-4191
(800) 346-8319
110 South Railroad Ave
New Holland, PA 17557
Monday Thru Friday 7:30-5:00; Saturday 7:30-Noon
Other Times Available By Appointment
e-mail abcgroff@abcgroff.com

MANU-RX

...A microbial manure treatment. Have This...



Not This...!!!



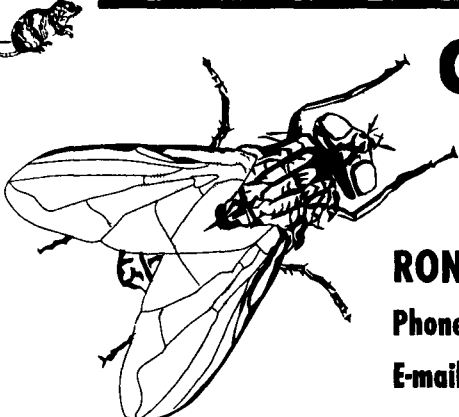
Directions for Use: 50 Cow Herd
Dilute 16 oz Manu-Rx in 10 gallons of clear water. Pour into gutters. Repeat this application on a monthly basis.
Aaron Groff & Son LLC
103 Clearview Drive
Ephrata, Pa 17522
1-800-468-4909

C&M Farm Services Inc.

Elizabethtown • Pennsylvania

"Unique Farm Services"

RONI CLARK • Licensed & Insured
Phone: 717.361.6065 • Fax: 717.361.0867
E-mail: cnoflies@paonline.com



We offer the following services for the most complete pest control possible. Whether your need is to control pests, eliminate harmful bacteria, or encourage beneficial insects, we have the tools to help you.

NEW FLY CONTROL
Water-based liquid
3% Pyrethrins \$87/gallon

FLY PARASITES
15,000 Colony \$15.00
25,000 Colony \$20.00
Shipping is Additional.

Flies and beetles are susceptible to many naturally occurring diseases. Applied twice a week, BALANCE (a naturally occurring fungus) works to reduce the adult fly & beetle population

BALANCE
Controls adult flies
Call for pricing

KWIK BAIT
\$120/40 lb. pail

PLUS complete supplies for the do-it-yourselfer
..... **SAVE TIME**
we can do it for you!