

## ◆ EQUINE CALENDAR ◆

To submit a date of an event for your organization, e-mail [farming@lancasterfarming.com](mailto:farming@lancasterfarming.com).

**Thursday, May 29**  
Regional Horsemanship Skills Clinic, Clinton County Fairgrounds.

**Saturday, May 31**  
Spring Fling Horse Show and Tack Swap, Linglestown Rd., Harrisburg, Jim Theurer, (717) 469-0658.

**Wednesday, June 4**  
Regional Reining/Basic Skills Clinic with Mr. Clifffors Reed, Bedford County Fairgrounds.

**June 6-7**  
Pa. Special Olympics Equestrian Event, Ag Arena, Penn State.

**Saturday, June 7**  
Hunter "C" Show, Halcyon Farm, Ltd, Dillsburg, (717) 432-1367.

**Sunday, June 8**  
Upperville Horse Show, Upperville, Va., (540) 592-3288.

**Thursday, June 12**  
Regional Horsemanship Skills Clinic, Clearfield County, Sykesville Fairgrounds.

**Saturday, June 14**  
Helen Friedrichs 2003 Show Series, Bridge Acres Stable, Lancaster, PA, (717) 393-2702.

**Monday, June 16**  
Somerset County, Reels Corner Equestrian Center.

**June 16-19**  
Regional Driving Clinics with Lore Homer.

**Tuesday, June 17**  
Armstrong County, Crooked Creek Horse Park.

**Wednesday, June 18**  
Bradford County, Troy Fairgrounds.

**Thursday, June 19**  
Montgomery County, Montgomery Co. 4-H Center.

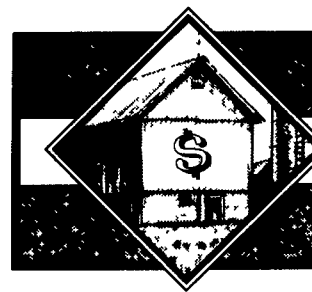
Regional Reining/Basic Skills Clinic with Mr. Richard Fisher, Wyoming County, Lithia Acres, Factoryville.

**Saturday, June 21**  
Linden Hall 2003 Show Series, Linden Hall, Lititz, (717) 626-0089.

Benefit Driving Show, Twin Brooks Horse Show Association, Linglestown Rd., Harrisburg, Jim Theurer, (717) 469-0658.

**Saturday, July 5**  
Linden Hall 2003 Show Series, Linden Hall, Lititz, PA, (717) 626-0089.

**Sunday, September 21**  
Twin Brooks Horse Show Association Fall Show, Jim Theurer, (717) 469-0658.

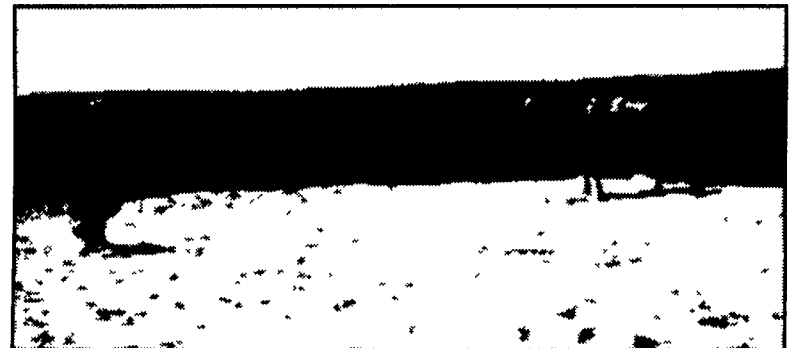


## ◆ BUSINESS BARN ◆

### Tapered - Sheeted Round Pen Offered

CIMARRON, Ks. — This tapered-sheeted round pen is safe for both the trainer and the horse during early training sessions. The pen is constructed of 6 foot tall panels with 5 foot solid sheeting. The sheet metal and tubing are 14 gauge with an 11 gauge bot-

tom rail. It is complete with an eight-footwide by nine-footwide T ride through gate. The pen is available from 30 inches to 60 inches diameter. Call (620) 855-2385 for more information or e-mail at [blatner@ucom.net](mailto:blatner@ucom.net).



The pen is constructed of six-foot tall panels with five-foot solid sheeting.



### OVER 20 YEARS OF BUILDING EXPERIENCE

Famer Boy Ag Systems offers innovative housing design, supported by personalized service, providing everything you need for an unbeatable competitive advantage. We can also supply you with a full line of live-stock equipment.

Call or visit our experienced sales staff

**1-800-845-3374**



## FARMER BOY AG Systems INC.

TURN-KEY ANIMAL PRODUCTION SYSTEMS



- Horse Stalls
- Corrals
- Waterers
- Tanks
- Fence Supplies
- Chargers
- Feeders
- Window Grills
- Windows
- Doors
- Cupolas
- Horse Trainers
- Reitbahnplaner
- Aluteam Hurdles

Browse our secure web site for all your equipment and replacement parts 24 hrs/day or call for a free catalog.

[www.farmerboyag.com](http://www.farmerboyag.com)

