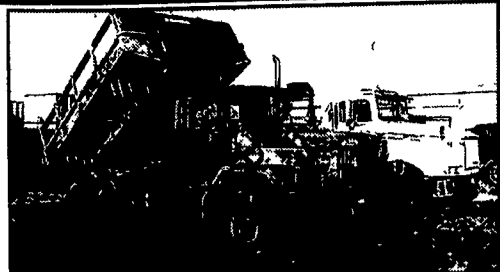
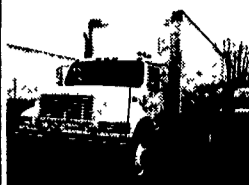


**32' Altec Manlift**  
400 Hrs., For 1 Ton Truck  
Or Larger. New \$20,000  
**\$8,500 Or Best Offer**  
Outriggers Available  
**610-593-2753**

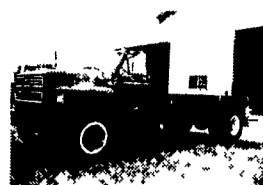


**MILITARY DUMP TRUCKS**  
10 wheel drive, turbo diesel, 5 speed, No CDL  
required, 17 ton hoist - PTO driven  
Starting at \$7950  
Stocking Military 5th Wheel Tractors, Wreckers,  
Cargos, Blazers, Pickups  
Offering Complete Repair Service for All Military Vehicles  
Pictures/Prices/Descriptions  
[WWW.EASTERNSURPLUS.NET](http://WWW.EASTERNSURPLUS.NET)  
(215) 598-8227

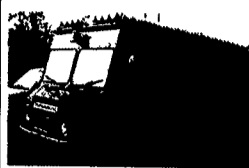
**LEED TRUCK CENTER**  
402 South Chiques Rd.  
Salunga Exit, Route 283 **717-898-1200**



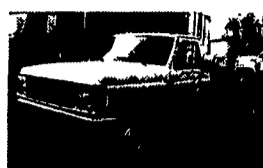
1996 INC 4900, DT466, Turbo Diesel, 5 Spd, P/S, A/B, 24' Van Body With L/G & CSD, 33,000 GVW Insp, Very Clean Only \$10,500



1989 FORD F800, 7.8 Liter Turbo Diesel, 5 & 2 Spd, P/S, 33,000 GVW, 18' Platform Body, Insp Clean Only \$4,800



1990 CHEVROLET 16' GRUMMAN ALUM. STEP VAN, V6, A/T, P/S, P/B, Roll-up Door, Dual Wheel, 10,000 GVW, Insp, Clean



1988 FORD F350, 7.3 Liter Diesel, 5 Spd, P/S, P/B, 12' C&C, 10,000 GVW, Dual Wheel, New Paint, Clean

Priced To Sell

Priced To Sell

**35 TRUCKS AND TRAILERS**

Pequea Way 16 ft flat bed trailer, w/metal sides, ramps, elec brakes, 6000lb GVW, \$1,650/obo. 717-399-0201

Buy a pre-owned car or truck for auction net + 7% (Manheim online). Eagles Nest Auto Buyers' Agent, Duncannon, PA. Toll-free 877/801-2230

'98 Chevy Cheyenne 3500, 2WD, 6.5 turbo diesel, auto, PS, PB, air, AM/FM, 9000 GVW, 49,000 one-owner miles, dark blue, \$10,900. 717-733-2873

'00 GMC SL 1500, 4x4, 4.8 V8, auto, PS, PB, PL, cruise, tilt, air, Am-Fm cass., 71,000 one-owner miles, charcoal, \$11,900. 717-733-2873

'02 Dodge 1500, 8 pass, short whl base, 318 auto, PS, PB, air, Am-Fm cass, 19,000 miles, dark green, \$13,500. 717-733-2873

'99 Dodge 2500, 12 pass, 318 auto, PS, PB, dual air, AM-FM cass, 13,000 original miles, dark green, excellent, \$13,500. 717-733-2873

'99 Dodge 3500, 15 pass, 360 auto, PS, PB, cruise, tilt, dual air, privacy glass, white, 65,000 miles, \$11,900. 717-733-2873

'97 GMC SL 1500 Suburban, 2WD, 350 auto, PS, PB, cruise, tilt, air, Am-Fm cass, towing package, 78,000 miles, ex. condition, \$9,900. 717-733-2873

'97 Chevy Cheyenne 1500, 4x4, 305 Vortec, auto, PS, PB, cruise, tilt, air, AM-FM cass., 68,000 one owner miles, new radials, \$9,900. 717-733-2873

'97 Chevy Cheyenne 2500, 2WD, ex. cab, 350 auto, PS, PB, cruise, tilt, air, Am-Fm cass, 8600 GVW, towing package, \$9,900. 717-733-2873

**Four Way Auto Sales**  
VANS, TRUCKS, ALL MAKES, ALL MODELS



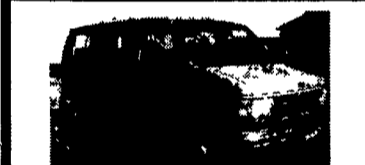
02 FORD E-350 XLT  
15 Passenger, 6.8 V10, Dual A/C & Heat, Privacy Glass, PW, PL, CD, P Seat, P Mirrors, Keyless, Tow Package, Black, 32,000 Mi., #4536



02 FORD E-350 SUPER CLUB WAGON XLT  
15 Passenger, 5.4 V8, Dual A/C & Heat, Privacy Glass, PW, PL, Tilt, Cruise, Cassette, CD, Keyless, Tow Package, Blue 27,000 Mi #4421



99 FORD E-350 SUPER CLUB WAGON XLT  
Dual A/C & Heat, Privacy Glass, PW, PL, Tilt, Cruise, Cassette, Silver, 79,300 Mi #4549



02 FORD E-350 CLUB WAGON XLT  
12 Pass., 5.4 V8, Dual A/C & heat, PW, PL, Tilt, Cruise, Cassette, CD, Tan, 14,600 Mi., #4545



00 FORD E-350 CLUB WAGON XL  
12 Passenger, 5.4 V8, Dual A/C & Heat, Privacy Glass, Silver, 55,000 Mi., #4476



98 FORD E-150 CLUB WAGON XLT  
8 Passenger, 4.6 V8, Dual A/C & Heat, Privacy Glass, PW, PL, Tilt, Cruise, Cassette, Blue, 34,300 Mi., #4558



01 E-150 CLUB WAGON TRAVELLER  
7 Pass, 5.4 V8, Dual A/C & Heat, Privacy Glass, PW, PL, Tilt, Cruise, Cass, CD, Keyless, Leather Quad Captains, Video entertain syst., Green/gray, 10,500 Mi., #4554



00 FORD E-150 CLUB WAGON CHATEAU  
7 Pass, 5.4 V8, Dual A/C & Heat, Privacy Glass, PW, PL, Tilt, Cruise, Cass, CD, Keyless, Tow Package, Red/Silver, 78,300 Mi., #4537

**Additional Inventory**  
**7 Passenger**

- 00 Ford Windstar LX, 7 Pass, 3.8 V6, Black, 34,000 Mi
- 02 Ford E-150 Club Wagon, Chateau 7 Pass, 5.4 V8, Blue/Silver, 28,200 Mi
- 01 Ford E-150 Chateau, 7 Pass, 4.6 V8, Green/Silver, 46,000 Mi
- 00 Ford Windstar SE, 7 Pass, 3.8 V6, Black, 37,500 Mi

**8 Passenger**

- 00 Chevy Astro LS, 8 Pass, 4.3 V6, Blue/Silver, 39,800 Mi
- 02 Chevy G1500 Express LS, 8 Pass., 5.7 V8, Dk Green, 27,900 Mi
- 01 GMC G1500 Savana SLE, 8 Pass., 5.0 V8, Green, 6,900 Mi
- 02 Chevy G1500 Express LS, 8 Pass., 5.7 V8, Dk Blue, 21,800 Mi
- 02 Ford E-150 Club Wagon XLT, 8 Pass., 5.4 V8, Silver, 25,900 Mi
- 02 Chevy G1500 Express LS, 8 Pass., 5.7 V8, Tan, 28,300 Mi
- 02 Chevy G1500 Express LS, 5.7 V8, Victory Red, 20,800 Mi.
- 01 Chevy G1500 Express LS 8 Pass., 5.0 V8, Pewter, 26,900 Mi

**12 Passenger**

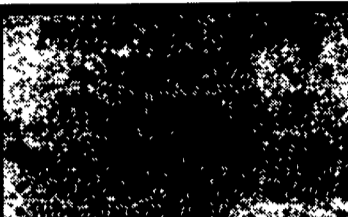
- 00 Ford E-350 Club Wagon XL 12 Pass., 5.4 V8, Silver, 55,000 Mi

**15 Passenger**

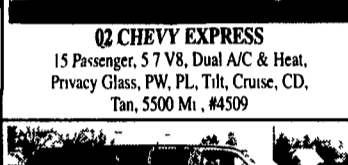
- 00 Ford E-350 Super Club Wagon XLT, 15 Pass., 5.4 V8, Tan, 52,100 Mi
- 99 Ford E-350 Super Club Wagon XLT, 15 Pass., 5.4 V8, Green 62,700 Mi
- 01 Ford E-150 Super Club Wagon XL, 15 Pass., 6.8 V10, Tan, 29,800 Mi
- 02 Dodge B3500 Maxi Ram Wagon 15 Passenger, White, 29,600 Mi
- 00 Ford E-350 Super Club Wagon XLT 5.4 V8, Red, 46,200 Mi
- 00 Chevy G3500 Extended Express 15 Pass., 5.7 V8, White, 55,000 Mi.

**Cargo & Misc.**

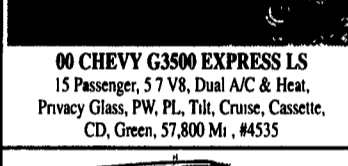
- 03 Ford E-350 Econoline Cargo, 9,500 GVW, 7.3 Powerstroke Diesel, White, 6,300 Mi.
- 00 Ford E-350 Econoline Cargo, 5.4 V8, 9,500 GVW, White, 65,100 Mi.
- 99 Ford E-150 Econoline Cargo, 4.2 V6, White, 43,000 Mi
- 02 Ford E-350 DRW, 14 ft Supreme Box, 5.4 V8, 11,500 GVW, White, 11,900 Mi
- 00 Isuzu NPR Tymo Street Sweeper Del 210, 3.9 Diesel, 12,000 GVW, 41,000 Mi, Like New
- 97 Ford E-450 Super Duty Turtle Top Bus w/Wheelchair Lift, 21 Pass., 7.3 Power Stroke Diesel, 66,500 Mi
- 99 Ford F-550 4x4 XLT Krystal Bus Body 25 Pass., 43,600 Mi, 7.3 Powerstroke Diesel



02 CHEVY EXPRESS  
15 Passenger, 5.7 V8, Dual A/C & Heat, Privacy Glass, PW, PL, Tilt, Cruise, CD, Tan, 5500 Mi., #4509



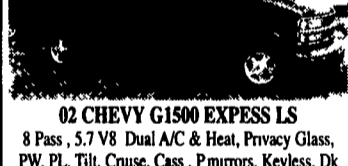
00 CHEVY G3500 EXPRESS LS  
15 Passenger, 5.7 V8, Dual A/C & Heat, Privacy Glass, PW, PL, Tilt, Cruise, Cassette, CD, Green, 57,800 Mi., #4535



02 CHEVY G2500 EXPRESS LS  
12 Passenger, 6.5 Turbo Diesel, Dual A/C & Heat, Privacy Glass, PW, PL, Tilt, Cruise, Cassette, CD, Keyless, Tow Package, Dk Blue, Diesel, 8800 Mi #4540



02 CHEVY G1500 EXPRESS LS  
8 Pass., 5.7 V8, Dual A/C & Heat, Privacy Glass, PW, PL, Tilt, Cruise, Cass., Pmirrors, Keyless, Dk Green, 30,000 Mi #4542



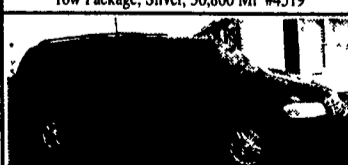
02 CHEVY G1500 EXPRESS LS  
8 Passenger, 5.7 V8, Dual A/C & Heat, Privacy Glass, PW, PL, Tilt, Cruise, CD, Dk Gray, 22,300 Mi., #4519



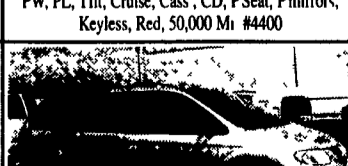
00 CHEVY ASTRO AWD LT  
8 Pass., 4.3 V6, Dual A/C & Heat, Privacy Glass, PW, PL, Tilt, Cruise, Cass., CD, Pseat, Keyless, Tow Package, Silver, 56,800 Mi #4519



00 CHEVY VENTURE EXTENDED LS  
7 Pass., 3.4 V6, Dual A/C & Heat, Privacy Glass, PW, PL, Tilt, Cruise, Cass., CD, PSeat, Pmirrors, Keyless, Red, 50,000 Mi #4400



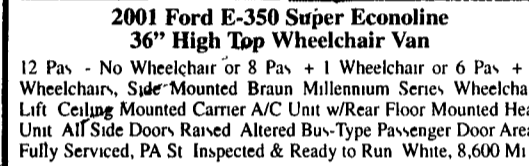
01 DODGE GRAND CARAVAN SPORT  
7 Pass., 3.3 V6, Dual A/C & Heat, Privacy Glass, PW, PL, Tilt, Cruise, Cass., Tan, 23,000 Mi #4268



01 CHEVY G3500 EXPRESS CARGO  
5.7 V8 A/C Tiv Package Inside Shelving Side & Rear Door Glass 9570 GVW, White 57,200 Mi., #4539

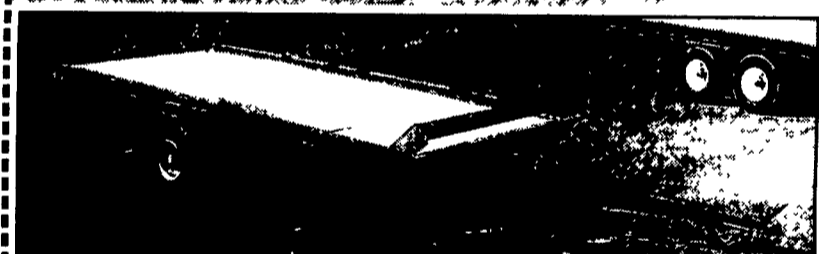


**Immaculate**  
2001 Ford E-350 Super Econoline  
36" High Top Wheelchair Van  
12 Pas - No Wheelchair or 8 Pas + 1 Wheelchair or 6 Pas + 2 Wheelchair, Side Mounted Braun Millennium Series Wheelchair Lift Ceiling Mounted Carrier A/C Unit w/Rear Floor Mounted Heat Unit All Side Doors Raised Altered Bus-Type Passenger Door Area Fully Serviced, PA St Inspected & Ready to Run White, 8,600 Mi



**Four Way Auto Sales**  
Rt 23  
New Holland, PA  
Toll Free  
1-877-999-8267

**Special**



Model 52120 (4' x 10') \$559  
Also available,  
Model 60144 (5' x 12') \$815  
Heavy duty utility trailer Offer good until May 15th, 2003

**LAWN CARE OF PENNSYLVANIA**  
311 Willow Street - Terre Hill, PA 17581 717-445-8431

**F.M.I.** Your Full Line For  
**FEEDMOBILE, INC**  
717-626-2680 Lititz, PA  
**TRUCK BODIES & HOISTS**  
**MULTI PURPOSE BULK MATERIAL**  
Dump Body 12'-24' Lengths  
PULL TARP AVAILABLE  
**CHIPPER BODY**  
• 56" Sides  
• 30" 2 pc Endgates  
• Aluminum top or optional tarp  
• Available in 8'-12' lengths with wood or aluminum floors  
**DROP HINGE HOISTS**  
Class B - 9' to 12'  
Class D - 12' to 16'  
Class E - 12' to 16'  
Class F - 12' to 18'