

1A CONSTRUCTION EQUIPMENT

100 E IH track loader, G cond, \$11,000. 717-776-7735

Hoe, 98 JD 310E, 2WD, open, 1450hr, \$22,500. 302-998-1788, finance

Wood chipper, 4WD hoe, stumpgrinder, dsl welder, 15' scissorlift. 302-998-1788

Industrial steel roll-up overhead door, electric or chain, 12'x12'. 717-382-4599

9000 Ford trac., single axle, inspected, good truck. 717-382-4599

General 3-axle lobby trailer, new tires, inspected, good shape, 22,600 gvw; Centerville gooseneck trailer, 30,000 gvw, inspected. 717-382-4599

'95 IR DD24, dbl drum roller, ex cond, \$14,600. 570-753-3391

'91 Blaw Knox PF115 paver, 8ft Omni, 1A Screed, 2.5 extension, JD dsl, ex cond, \$33,000. 570-753-3391

Wanted: Backhoe for farm use, 4wd or others. 717-258-8161, 717-369-2890

Liebert 911 excavator, good cond, runs good, w/thumb, \$10,500. 570-759-2433

Ford 555 backhoe, cab, 2900hrs, rebuilt engine, G cond, 570-253-1578

Farmhand tub grinder, Ex for grinding bark mulch, \$8,500. 814-466-7074

Dayton generator, 80 surge for sale, 40KW continuous. 610-286-5409

Rockhound-mechanical rock picker mdl 72, attaches to skid loader, Like New, \$4,500. 610-316-8562

Cat 941B 80H3516, 374 hrs on eng, new trac & carriage, 717-543-0906 eve

Stationary cement mixer, rotating paddle unit, 5x7', top fill, side unloading, hand clutch, heavy unit. 585-554-3545

WANT: Ingersoll Rand air compressor 100 model. 732-329-6555.

NH LS170 skid loader, 150 hrs, heated cab, \$17,000. 717-284-5038

Silent Hoist 10,000lb fork-lift, 6' hyd. adj. forks, good condition, \$4200. 610-932-5576

Sullair 185 air compressor, JD dsl, good condition, \$1500. 610-932-5576

AC HD7G crawler loader, \$5000 obo. JD 8875 skid steer, good cond, \$13,500. 570-289-4117

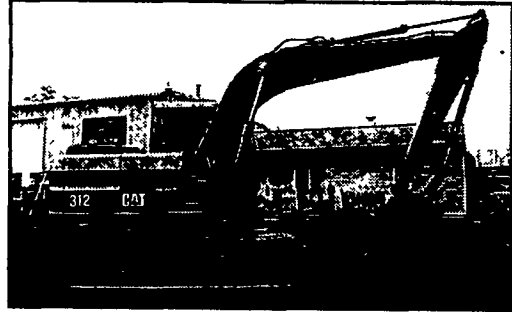
Approx 100 pallets or 4 trailer loads of heavy duty gas fittings, valves, connections, etc. Jack @ 717-529-5597 aft 6pm

JD 450C crawler loader, 4n1 bucket, winch, log arch, good cond, \$15,500. JD 450E, 6 way blade, lever steer, \$20,500. 302-492-3453.

JD 570 grader, good shape, lo hrs, must see, asking \$15,000. 570-682-3184.

'72 Ford tandem dump truck, good shape, 80K mi on new 3208 eng, asking \$10,000. 570-682-3184.

FORKLIFTS Must Sell, many makes. 215/680-6786

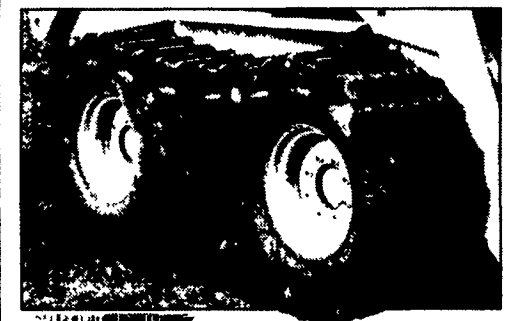


1995 CAT 312 Excavator \$35,000

Heavy Equipment Loader Parts

Rt.22 Grantville, PA (717) 469-0039 help10070.com

GROUSER PRODUCTS TRACKS for Skid-Steers



- Improve traction
- Reduce ground pressure
- Run-loose design
- Built-in length adjustment
- Install in 30 min., remove in 10 min.

Tracks In Stock

Call for Sizes and Prices

ABC GROFF
The Name You Can Trust Since 1890

110 South Railroad Ave
New Holland, PA 17350
800-346-8319

Visit our website: abcgroff.com
Monday thru Friday: 7:30-5:00; Saturday 7:30-Noon
Other Times By Appointment

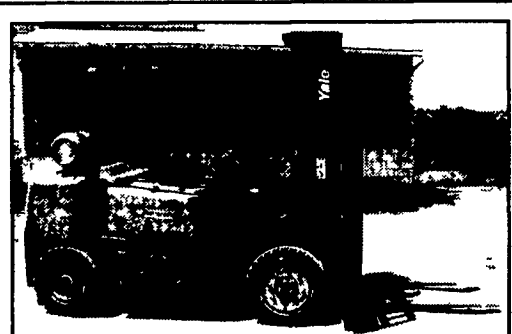
Sam's MECHANICAL SERVICES

Fork Lifts
Sales - New & Reconditioned
Rental
Leasing

Specializing
In Fork Lifts
Skid Loaders
Repairs



Allis Chalmers 700
21 Ft. Tractor Lift, Motor Rebuilt, LP Gas, Steel or Rubber Wheels Available. A-1 Condition.



1991 Cat, Diesel, 8,000 lb., 5,000 hrs., full cab, air tires, 48" forks, 4-way hydraulics

- 1996 Hyster 15,500 lb. Pneumatic Tire, diesel
- 1991 Hyster 7000 lb., Pneumatic Tire, Diesel **\$7,950**
- 1996 Hyster 12,000 lb., Cushion Tire, LP Gas **\$9,550**
- 1992 Crown Order Picker, 240 in. Reach . . **\$6,950**

• Used fork lift mast for back of tractors
• Heavy duty fork extensions

Don't throw out or trade that old engine! Have it overhauled for a fraction of the cost of new! All work is guaranteed.

~ Skid Loaders & Fork Lift Rentals ~
5917 Plank Road, Narvon, PA 17555
Call for Sales & On-Site Service
717-442-9334

1A CONSTRUCTION EQUIPMENT



1997 DAEWOO Pneumatic 5000 lb. capacity side shift power steering triple mast, 83 down 188 up LPG new tires excellent condition

C. Betz Fork Lift Sales 717-485-0410



Trommel 616 Screen Machine w/Two 40' Hyd. Stacking Conveyors
\$48,500
814-329-2783



1973 580 B Case Backhoe, good working condition, 4 rebuilt cylns., some new hoses. (610) 286-0606

\$6,800

- #8844 Case 580K Loader Backhoe, 1990, 4 WD, Cab, Ext. Hoe \$19,900
- #8825 John Deere 310A Loader Backhoe, 1977, 2WD, Std. Hoe, Partial Cab \$8,900
- #8570 Case 580SL Loader Backhoe, 1998, 4WD, Cab AC, Stereo, Ex, 3500 Hrs . . . \$36,900
- #8484 Case 580SE Loader Backhoe, 1986, 4WD, Cab, Ext. Hoe \$17,900
- #7870 Case 570LXT Tractor/Loader, 1996, 4 WD, Canopy, 3 Point Hitch, Filled Tires, 2550 Hrs. \$24,900

Vernon E. Stup Co.
5859 Urbana Pike, Frederick, MD 21701
301/663-3185

MIKE ZYNDORF LLC
609/625-8660
609/641-3342 (Evenings)
FAX 609/625-8664
6481 Harding Hwy (Rt. 40) Mays Landing, NJ 08330
Visit us at www.mzequipment.com for our complete inventory



85 Mack R686 Truck Tractor, 38 rears, D F, wet line, 300 - 6 sp, P/S & AC Call for info



1996 - Komatsu PC60-7, Rubber tracks, cab & blade . . . \$26,900



92 Cat 307SSR Cab AC, Rubber tracks, backfill blade, and offset boom . . \$20,500
94 Cat 307 Cab, Backfill Blade, Rubber Tracks . . . \$24,900



95 Cat 312 Excavator, 20" pads, cab with AC \$34,900



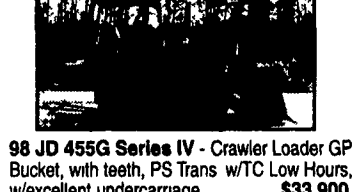
97 Case 580 SL, 4x4, cab, extend a hoe, new tires, excellent cond . . . \$34,500



87 Cat 215BLC, 28" Shoes, 5200 hours, Exc Cond . . . \$24,500



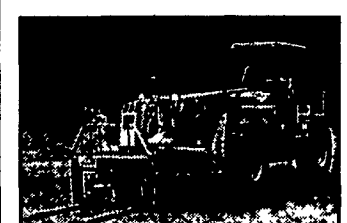
Sky Trak Telescopic Forklift, 9000 lb capacity, Call for info
96 Master Craft, 6000lb capacity, 21' 3 stage mast diesel . . . \$15,000
97 American Eagle, 6000lb. capacity, 21' 3 stage mast diesel . . . \$15,900



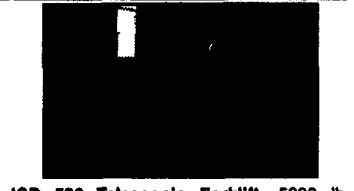
98 JD 455G Series IV - Crawler Loader GP Bucket, with teeth, PS Trans w/TC Low Hours, w/excellent undercarriage . . . \$33,900



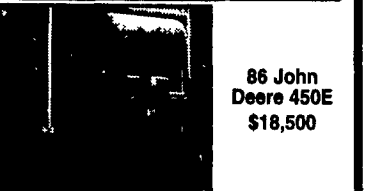
(2) JCB 930 Straight Mast Forklifts 6000 lb capacity - (1) 2 wheel drive (1) 4 wheel drive 2wh \$16,900, 4wh \$22,900



96 Cat TH63 Telescopic Forklift 4x4, 4 wh steer, 6000 lb. capacity, stabilizers, low hrs \$34,500



JCB 520 Telescopic Forklift, 5000 lb. capacity . . . Call for info



86 John Deere 450E \$18,500

- 94 Komatsu PC20-7 Canopy, Rubber Tracks, Blade \$10,500
- 1996 Vibromaxi Roller, Model 253-104 hours. \$11,900
- '94 Simon Manlift MP60, 60' reach, 4x4, diesel. \$14,900
- '95 Case Model 570 XLT Loader Landscape Tractor w/Gannon grater box, 1400 hrs (2) 1997 Specialty Light Plants model BTK6-4MH, Kubota diesel, 4-1000 watt bulbs \$16,500
- (1) 1994 Amida Light Plant model SL4060D-4MH, Kubota diesel, 4-1000 watt bulbs
- 96 Manitou Rough Terrain Straight Mast 4x4 5000 lb capacity, 21' 3 stage mast, Ford diesel power \$16,900
- (2) 1999 & 1995 Case Model 360 Trenchers \$15,900 & \$12,500
- Thomas Pro Tough Screen 400 Screen Plant \$20,500

Eager Beaver Trailers



South Jersey New Full Line Eager Beaver Dealer

Various new excavators, grapples and thumbs
Delivery
Financing

