

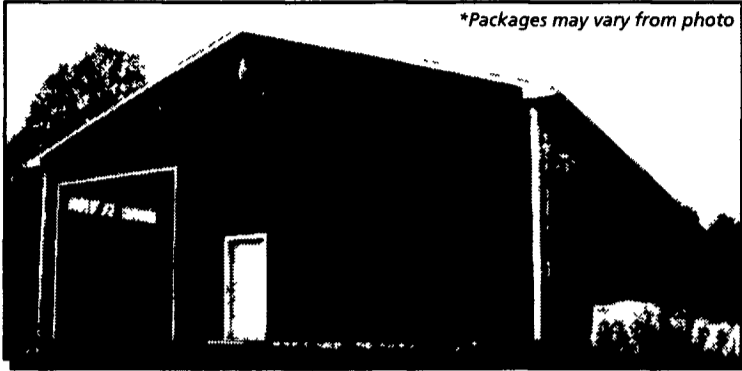
CARTER **THE** Lumber **YARD**

#2 YELLOW PINE

◆ Tongue & Groove ◆ Barn flooring ◆ Horse stall walls ◆ 2" x 6"

10'	\$6 ⁹⁹
12'	\$8 ⁴⁹
14'	\$9 ⁹⁹
16'	\$11 ⁹⁹

Pole Barns & Garages



*Packages may vary from photo

Painted Steel Siding w/ sliding door	8' HIGH 24' x 24'	10' HIGH 30' x 40'	12' HIGH 40' x 64'
25 yr. Painted steel roof	\$2,704	\$4,763	\$10,146

* Also available in T1-11 and vinyl - customize your pole building

FREE COMPUTER DESIGN

Any size, any style, any design - check your local Carter Lumber store or carterlumber.com for an estimate

STANDARD FEATURES

- 24', 30', 40' widths x any length
- Treated posts & skirt boards
- 25 yr. O.C. Fiberglas® shingles or Fabral® metal roofing
- 2" x 4" girts & purlins
- Metal, Vinyl or T1-11 siding
- Prefabricated trusses w/ 1' eave overhang
- Sliding or overhead door w/hardware
- Nails, trim, soffit & plans
- Optional 3' steel passage door
- * Vinyl siding available in 24' & 30' wide buildings
- * 40' barns available 14' high

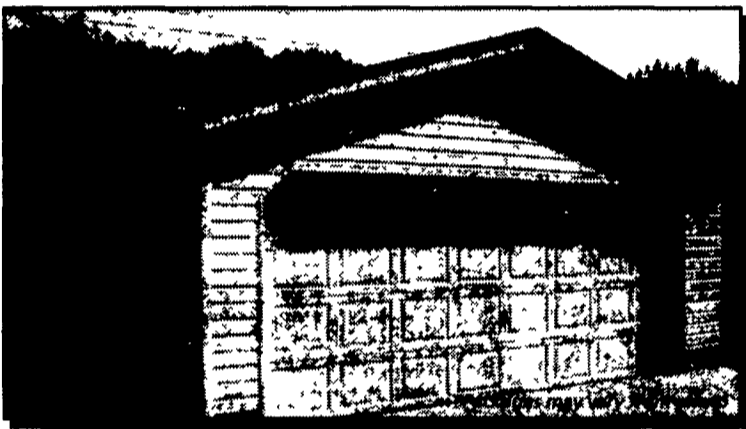
Metal Roofing



PAINTED GRANDRIB 3

◆ Custom lengths available ◆ White in stock ◆ 19 colors to choose from ◆ 36" actual coverage ◆ Stock sizes

per 10' sheet	\$16 ⁰³
per 12' sheet	\$19 ²³
per 14' sheet	\$22 ⁴⁴
per 16' sheet	\$25 ⁶⁵



	1 CAR	2 CAR	
Standard	18' x 24'	22' x 22'	26' x 24'
VINYL SIDING	\$2,657	\$2,978	\$3,307

* Available in promotional & deluxe packages & many other sizes

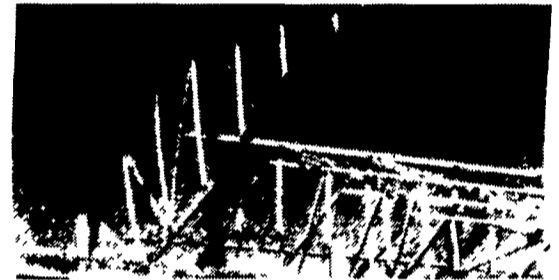
FREE COMPUTER DESIGN

Any size, any style, any design - check your local Carter Lumber store or carterlumber.com for an estimate

STANDARD FEATURES

- 16" O.C. wall framing w/treated bottom plates
- Trusses
- 25 yr. O.C. Fiberglas® shingles with 7/16" OSB roof sheathing, roof vents & siding
- Roofing felt and drip edge
- 3' passage door, 1' eave overhangs & soffit
- 9100 series garage door (insulated)
- Includes all nails, hardware, plans & instructions
- Also available in T1-11 siding.

Trusses



24' SUPER TRUSS

◆ 4/12 pitch with 1' overhang ◆ Good for 4' on center at 30 lb. live load. Check local listing codes (15575)

\$32⁹⁹

Dimension Lumber

◆ We stock quality lumber in large quantities ◆ Contact your local Carter Lumber for available species ◆ Hem Fir or Doug Fir available in 22', 24' and 26'

	10'	12'	14'	16'	18'	20'
SPF 2" x 4"	\$2 ⁴⁰	\$2 ⁸⁰	\$3 ³¹	\$3 ⁸⁹	\$4 ⁷⁴	\$5 ²⁷
SPF 2" x 6"	\$3 ⁹⁰	\$4 ²⁶	\$4 ⁹⁷	\$6 ³²	\$7 ⁶⁵	\$8 ⁵⁰
SPF 2" x 8"	\$4 ⁸⁰	\$6 ⁴⁰	\$6 ⁷²	\$7 ⁸⁹	\$9 ⁴⁸	\$10 ⁸⁰
SPI 2" x 10"	\$6 ⁹²	\$9 ⁸⁰	\$11 ⁴³	\$12 ²⁴	\$13 ²⁰	\$14 ⁹³
SPF 2" x 12"	\$9 ²⁰	\$11 ⁰⁴	\$12 ³²	\$16 ⁰⁰	\$19 ⁴⁴	\$21 ⁶⁰

Treated Lumber

◆ All of our treated lumber is quality grade stamped and carries a limited lifetime warranty against rot & decay ◆ Southern Yellow Pine

	8'	10'	12'	14'	16'
#2 2" x 4"	\$2 ⁴⁹	\$3 ⁴⁹	\$4 ⁰⁹	\$4 ⁹⁹	\$5 ⁷⁹
#2 2" x 6"	\$3 ⁴⁹	\$5 ¹⁹	\$6 ³⁹	\$7 ⁰⁹	\$8 ⁹⁹
#2 2" x 8"	\$5 ⁰⁹	\$6 ⁵⁹	\$8 ³⁹	\$9 ⁴⁹	\$11 ⁴⁹
Standard 5/4" x 6"	\$4 ⁰⁹	\$5 ⁰⁹	\$6 ⁰⁹	\$7 ⁰⁹	\$8 ⁹⁹
4" x 4"	\$4 ⁹⁹	\$7 ⁰⁹	\$8 ³⁹	\$9 ⁰⁹	\$11 ⁴⁹

HOURS: Mon. thru Fri. 7:30-6:00 • Sat. 7:30-4:00 • Sun. 9:00-3:00

Good 5/10 thru 5/17/03

LANCASTER
LBR. (717) 397-4829 / FAX (717) 397-4865
(Closed Sunday)

ELIZABETHTOWN
LBR. (717) 367-1886 / FAX (717) 367-3858
PEH. (717) 367-7707
(Closed Sunday)

CARLISLE
LBR. (717) 245-0404 / FAX (717) 245-9361
PEH. (717) 245-2486 / FAX (717) 245-0295

CHAMBERSBURG
LBR. (717) 263-0822 / FAX (717) 263-7077

NORTHUMBERLAND
LBR. (570) 473-8311 / FAX (570) 473-7149



Visit us online at carterlumber.com