

Direct Slaughter Cattle Daily Market Review

St. Joseph, Mo.
April 30, 2003

Report Supplied By USDA
National Slaughter Cattle Review as of 2:00 p.m. Wednesday — Trade activity was slow but buyer inquiry has increased.

There were not enough sales reported to establish an adequate market trend. Sales last week were mostly 78.00 live and mostly 124.00 to 125.00 on a dressed basis.

NEGOTIATED SALES: Confirmed: 12,698; week ago: 6,192; year ago: 2,790. Week to date: 22,133; week ago: 11,956;

year ago: 9,542.

NEGOTIATED PRICES PAID for Domestic Slaughter Steers and Heifers (Information derived from the 5 area weighted average report.):

STEERS: LIVE BASIS: Over 80% 78.00-79.00, avg 78.28; 65-80% Choice 77.00-79.50, avg 77.99; 35-65% Choice 77.00-78.00, avg 77.85; under 35% Choice no quote. DRESSED BASIS: Over 80% Choice no quote; 65-80% Choice 127.00-127.00, avg 127.00; 35-65% Choice 123.00-126.00, avg 125.33; under 35% Choice no quote. Total all grades 123.00-127.00, avg 125.60.

HEIFERS: LIVE BASIS: Over 80% Choice no quote; 65-80% Choice 77.50-78.50, avg 78.12; 35-65% Choice no quote. Total all grades: 77.00-78.50, avg 77.79. DRESSED BASIS: Over 80% no quote; 65-80% Choice 123.00-125.00, avg. 124.03; 35-65% Choice 123.00-126.00, avg 124.13; under 35% Choice none. Total all grades 123.00-126.00, avg 124.11.

FORMULA PURCHASES: Prices established so far today for previously slaughtered cattle: Beef Type: Domestic: Head count priced today - 12,900; weighted avg weight - 749 lbs; weighted avg net price - 126.39.

Covers transactions reported at 2:00 p.m. today. Comments and market conditions may include information gathered from voluntary sources. All prices, weights and head counts are only those gathered through the mandatory reporting system.

East Coast and North Central Veal Report

Des Moines, Iowa
April 30, 2003
Supplied By USDA

CARLOT VEAL CARCASS REPORT: Northeast and North Central Basis, Apr. 28: Compared to trading last week: Northeast special fed veal generally steady on light to moderate demand and offerings. North Central special fed veal hide-off steady to weak and hide-on not tested on light to moderate demand and offerings.

VEAL CARCASS, SPECIAL FED, HOT BASIS, FOB PRODUCTION POINTS: Hide-On, 240-300 lbs: North Central 390 head, 164.00-172.00. Hide-Off, 215-275 lbs: Northeast 1,000 head. 185.00-188.00.

CONTRACT INFORMATION: Hot Basis, Hide-Off — (As of April 30, 2003) — Contract calves slaughtered this week: 185.00-197.00, Packers base market 180.00-187.00. Future contracts offered: Firm Bottom 183.00-190.00, Firm Top 200.00-210.00. Firm Bottom, 184.00, Split Half Top 204.00.

Fixed 187.00, 189.00 and 190.00.
•North Central - OH, IN, IL, MI & WI.
•Northeast - MA, MD, PA, NY, NJ, DE, CT & VT.

WEEKLY DISTRIBUTIVE, LESS THAN CARLOT, EAST COAST AREA VEAL CUTS TRADE, SPECIAL FED: Market for Tuesday, Apr. 29 — Compared to last week: Distributive special fed cuts inside rounds and stew meat weak to lower; chuck steady to weak and other cuts generally steady. Offerings are moderate on light to moderate demand. This past week sales have picked up after the slow pre-Easter holiday weeks trading.

Prices per CWT: Carcass, hide off 200-250 lb 220-235.00; Foresaddles 85-110 lb 170-180.00; Kosher Foresaddles 90-110 lb 195-205.00; Hindsaddles 85-115 lb 275-285.00; Loins, regular 17-25 lb 235-270.00; Loins, 4x4 trmd 12-18 lb 375-475.00; Hotel Racks, 8 rib 15-21 lb 385-430.00, 7 rib 14-20 lb 410-470.00, 6 rib 13-17 lb 475-525.00; Chuck, square cut 36-47 lb 95-115.00; Shoulder, full 14-20 lb 140-170.00; Legs, double 70-90 lb 270-295.00, TBS 3-piece 24-32 lb 550-615.00, BHS heel-out 27-35 lb 325-400.00; Top Round, trmd, cap-off 8-10 lb 600-725.00; Breast 10-12 lb 70-80.00; Necks, bone-in 24-28 lb 100-125.00; Stew Meat, regular 190-225.00; Boneless Trimmings 75-80% lean 63-70.00; Heavy Nature Green Hides, per piece 39-41.00.

Eastern Cornbelt Direct Feeder Cattle Weekly

Springfield, Ill.
April 25, 2003

Report Supplied By USDA
Eastern Cornbelt Direct Feeder Cattle Summary — Illinois, Indiana, Michigan, and Ohio: Feeder cattle prices were unevenly steady. Demand was light to moderate. Trading activity was slow to moderate. Reported sales consisted of about 51% beef steers, 49% heifers and 0% Holstein steers. Approximately 77% of the cattle marketed this week weighed over 600 lbs. Confirmed sales 900 this week, 525 last week and 750 last year.

FEEDER STEERS: Medium and Large 1-2: 500-525 lbs 98.50; 600-700 lbs 84.50-89.00; 700-800 lbs 82.00-85.00.

HOLSTEIN STEERS: No test.
FEEDER HEIFERS: Medium and Large 1-2: 475-675 lbs 86.00-89.00; 675-700 lbs 79.00-82.00; 700-725 lbs 76.00-77.00.

Prices are based FOB the farm unless otherwise indicated. Delivered prices include freight, commissions, and other expenses.

March Pig Crop 3 Percent Below Year Ago Number

Washington, D. C.
April 25, 2003

Report Supplied By USDA/NASS
WASHINGTON, D.C. — The March 2003 U.S. pig crop at 8.32 million head, was 3 percent below the previous year, according to the National Agricultural Statistics Service (NASS).

Sows farrowing during this period totaled 940 thousand head, 4 percent below last year. The average pigs per litter for March increased to 8.85, compared to 8.80 last year.

The U.S. inventory of sows and gilts on April 1, 2003, was 5.80 million head, down 3 percent from April 1, 2002.

U.S. sows and gilts bred during March totaled 1.15 million head, down 3 percent from the previous year.

Mid-Atlantic Names CEO

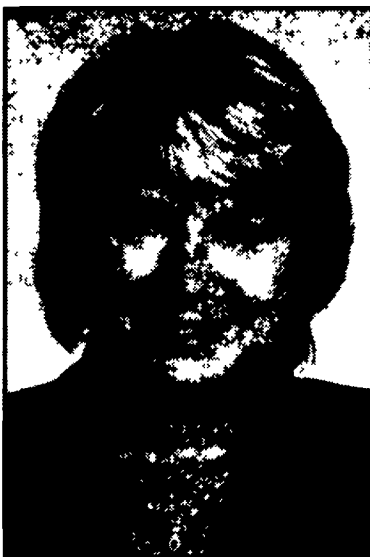
PHILADELPHIA — Patricia S. Purcell has been appointed CEO of Mid-Atlantic Dairy Association.

Purcell, a 14-year veteran of the dairy promotion industry, most recently served as director of advertising and retail promotions for Mid-Atlantic Dairy Association. She replaces Bret H. Rigby, who served as CEO for about five years before resigning recently to pursue other interests.

As CEO, Purcell will oversee the local implementation of national advertising, communications, health professional, nutrition education, school marketing and industry relations programs. She will serve as the liaison between Mid-Atlantic Dairy Association and Dairy Management Inc., which manages the national dairy checkoff program.

Purcell joined the Middle Atlantic Milk Marketing Association (MAMMA) as communications director in 1989. She served as interim general manager from 1996 to 1998 until MAMMA merged with the Philadelphia and Washington, D.C., Dairy Councils to form Mid-Atlantic Dairy Association.

Purcell grew up on a small



Patricia Purcell

dairy farm in southern Chester County. She was graduated in 1986 with a bachelor's degree in English from the University of Delaware, where she minored in journalism with a specialty in agricultural journalism. She also completed courses in advertising and marketing at the University of Maryland. Following graduation, she served as dairy writer with *Lancaster Farming* newspaper.

Tenn. Graded Board Holstein Feeder Sale

Nashville, Tenn.

April 25, 2003

Report Supplied By USDA
ATHENS SPECIAL HOLSTEIN STEER SALE, Apr. 24 — 246 head. Prices per hundredweight.

STEERS: Large 2: 300-400 lb 83.00; 400-500 lb 75.00; 500-600 lb 76.00; 600-700 lb 68.00; 700-800 lb 64.50. Large 3: 300-400 lb 80.50; 400-500 lb 83.00; 500-600 lb 77.00; 600-700 lb 66.00; 700-800 lb 64.00.



AG-BAG

25 Years of Research & Development

Best for Your Farm

Complete Parts & Service

AG-BAG INTERNATIONAL

Agri-Service LLC

Rental & Custom Services

14137 Pennsylvania Ave
Hagerstown, MD 21742

AG-BAG Dealer

(301) 665-9333
or
(877) 412-4224

...Bottom Line