

**2000 Isuzu NPR**  
3.9 Turbo Diesel, AT O,  
12,000 GVW, 41,000 Mi.,  
w/Tymco Street Sweeper,  
Model 210

**2002 Ford E350**  
DRW 14' Supreme Box Truck  
5.4L V8, 11500 GVW, A/C,  
Low Dock Height,  
11,200 Miles, #4548

**Four Way**  
*Auto Sales*

Rt. 23, New Holland, PA  
717-354-3199  
Toll Free 1-877-999-8267



**1989 Mack American LaFrance**  
**1500 GPM Pumper Truck**  
Auto Trans., Mack Diesel, Good Cond.,  
Will Refurbish to your Specs,  
**\$9,500**



**Curry Supply Co.**  
Curryville, PA  
814-329-2783

**GM Goodwrench Engines**

feel the confidence



THE FEELING IS GENUINE



- 12 Month Minimum Warranty
- Limited 36 Month Warranty
- Shipped As Shown

86 and prior carbureted 4 bolt main....\$1,370  
87-95 TBI, Truck, 2 bolt main.....\$1,799  
87-96 TBI, 3/4 Truck, 4 bolt main.....\$1,899

**Pro-built Custom Engines**



MORE THAN JUST POWER.

**470 HP-355CI Street / Strip**

Carb to pan pkg. Includes Fuel Pump,  
Distributor, Wires, Demon Carburetor,  
Victor Jr. Intake and Dyno Sheet

Only \$4,500

**355CI TBI Upgrade**

325 HP 400FT-LBS. Dyno Proven HP 87-95  
Trucks With Dyno Sheet

Only \$2,995



**Jones Parts Warehouse**  
A Division of Jones Family of Dealerships

Prices are subject to change. Prices do not include shipping.  
Please call for the best possible shipping prices for you

1-800-827-0129

**LESHER SALES & SERVICE**  
2700 Cumberland St.  
Lebanon, Pa.  
(Route 422 West)



**717-273-4535**  
website:www.leshermacksales.com

**New Trucks**

PRE-EPA 02

(1) 2003 CH613 Day Cab,  
E7-427, 10-Spd., Air  
Susp., 169 W.B.

(1) 2003 CH613 Day Cab,  
E7-427, 10 Spd.,  
Air Susp., 163 W.B.

(2) 2003 CV713 Granite,  
A1-427-Aset, RTO  
14908LL, Long Wheel  
Base: (1) 265", (1) 275"

(1) 1999 CH613, Day Cab  
E7-427, 10 Spd., Air Ride,  
169 W.B., 227,540 Miles



**Used Trucks**

(1) 1995 CH613, 42 in.

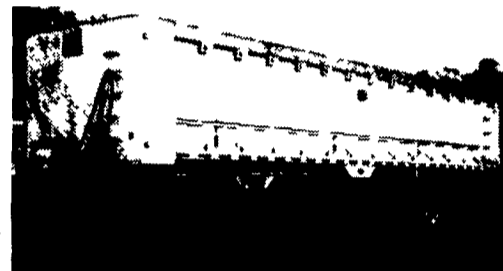
Highrise (Sleeper Box can  
be removed for min. cost.)

(1) 1995 CH613, Day Cab  
E7-350, 9 Spd, Air-ride,  
4.17 Ratio, 192 in. W.B.  
550,000 Miles

Many other Trucks in Stock - Call for Details



89 Ford Tri Axle Dump, 400 H.P. Cummins,  
8 Spd. LL trans. 18' Steel Dump, 46,000 Rears, 18,000  
FA, AC, Dual 6" Exhaust, Nice Shape. Asking \$22,900



96 Mac Frameless Alum. Dump Tri, 40"x102"x72" Alum.  
Wheels, 24.5 Tires, Extra Light Sealed 2-Way Gate,  
Coal Chute, Air Ride Susp., Individual Dump Valves,  
Extra Lights and Vibrator Asking \$24,900

CALL: 717-361-0145

**JONES QUALITY PRE-OWNED BEST BUYS!**

PONTIAC • HONDA • GMC TRUCK • ACURA • USED CAR CENTER  
1335 Manheim Pike • Lancaster, PA  
**717 394-0711**  
**QUALITY PRE-OWNED BEST BUYS!**



Prices based on straight sale. Tax and tags extra. Trades accepted at actual cash value. Must present this ad at time of purchase for sale price.



**NEW 2003 GMC C4500 DUMP BODY**  
Duramax Diesel, Allison Automatic & Much More!  
#41252, MSRP \$44,916  
SALE **\$40,400\***



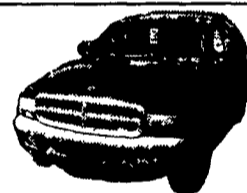
**NEW 2003 GMC 12 SUPREME CUTAWAY VAN**  
AT, Air, V8, #42144  
Was \$30,834  
SALE **\$24,900\***



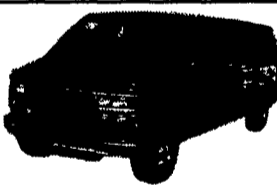
**2003 GMC DENALI XL 4x4**  
Auto, Air, 6000 V8, DVD Player, Dark Carbon Color  
Was \$52,318  
SALE **\$43,788**



**NEW 2003 GMC 3500 SAVANA PRO VAN**  
AT, Air, V8, & MUCH MORE  
#42486, Was \$28,974  
SALE **\$25,900\***



**2002 DODGE DURANGO SLT 4X4**  
AT, Air, V8, #7245  
Was \$25,900  
SALE **\$21,900**



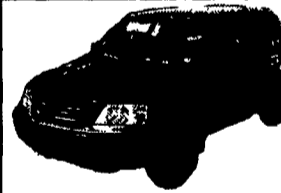
**2001 GMC SAVANA 15 PASSENGER VAN**  
6.5 Turbo Diesel, AT, Air, Nice  
7258, Was \$20,700  
SALE **\$17,700**



**2001 ACURA MDX 4x4**  
AT, Air, V6, Black  
#7212 Was \$34,800  
SALE **\$31,900**



**2001 CHEVY TAHOE 4x4**  
LS, AT, Air, V8, 4 Dr.  
#7141, Was \$28,800  
SALE **\$25,800**



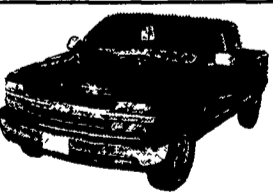
**2001 HONDA CRV 4X4**  
EX, 5 Spd., Air, 33K Miles,  
Black, #7227, Was \$20,700  
SALE **\$18,100**



**2001 DODGE RAM 2500 XCAB 4x4**  
SLT, AT, Air, V8, 35K Miles  
#7180, Was \$24,900  
SALE **\$22,000**



**2000 CHEV. SUBURBAN 4X4**  
AT, Air, LT, V8, Black  
#7222, Was \$26,800  
SALE **\$24,400**



**2000 CHEV K1500 XCAB 4X4**  
LT, AT, Air, V8, Black  
#7221, Was \$23,800  
SALE **\$21,400**



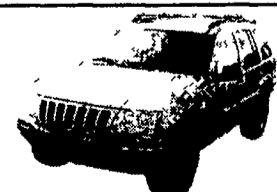
**1999 ISUZU RODEO 4x4**  
AT, Air, V6, 65K Miles, Black, #7159  
Was \$13,900  
SALE **\$11,500**



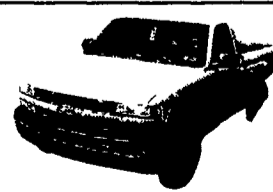
**1999 CHEV. K1500 4X4**  
AT, Air, V8, LS, #7228,  
Was \$16,900  
SALE **\$13,900**



**1999 CHEV TAHOE 2 DOOR 4x4**  
AT, Air, LS, V8, #7178  
Was \$19,200  
SALE **\$16,100**



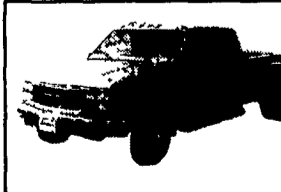
**1999 JEEP GRAND CHEROKEE 4x4**  
AT, Air, Limited, 6 Cyl., 24K  
Miles #7155, Was \$21,000  
SALE **\$17,700**



**1999 CHEV K2500 4X4**  
Auto, Air, 6.0 V8, #7244,  
Was \$16,700  
SALE **\$13,800**



**1998 FORD EXPEDITION 4x4**  
AT, Air, V8, XLT  
#7127 Was \$17,700  
SALE **\$14,700**



**1997 GMC K3500 XCAB 4x4 DIESEL**  
6.5 Turbo Diesel, AT, Air, SLE,  
Nice, #7260, Was \$20,900  
SALE **\$17,500**



**1990 CHEV K1500 4x4**  
Air, 5 Spd., V8, Scottsdale  
#7238 Was \$6,900  
SALE **\$4,800**

\*All New Vehicles Include GM Rebates