

35 TRUCKS AND TRAILERS

7511 Allentown Blvd.
Harrisburg, PA 17112

AFFORDABLE CARS AND TRUCKS, INC.

717-652-1925
FAX 717-652-4888
www.autotrader.com/view/affordable car and truck

75 TRUCKS IN STOCK

"You Gotta Believe!!"

New Exit #72A, Rt. 81 N; Rt. 22 East of Harrisburg; 3 Miles North of Hershey Park

93 FORD F250 XLT 4x4 EXT CAB

Longbed, 7.3 Internal Turbo DSL, 5-Sp, AC, PW, PDL, Tilt, Cruise, Real Clean & Straight Truck 100,000 Mi
\$9,995



94 DODGE RAM 2500 4X4 LARAMIE SLT

Cummins Turbo DSL, AT, AC, PW, PDL, Tilt, Cruise, Very Clean Truck New PA Inspection Just As Nice As Can Be! 100,000 mi
\$10,500



93 CHEV 2500 SILVERADO SUBURBAN
4x4 350V8, 3/4 Ton, AT, AC, Dual AC + Heater, 3rd Seat, Tailgate 8600 GVW with Tow Package Rebuilt Trans with 3 Year Warranty 106K, Clean Vehicle
\$8,995



96 DODGE RAM 2500 4X4 LARAMIE SLT
AT, AC, PW, PDL, Tilt, Cruise, P Seat, Only 80,000 Miles. This Truck is Showroom Cond Looks Like It Was Never Driven!
\$13,995



96 FORD F250 XL 4x4
7.3 Powerstroke DSL 8600 GVW, 5 Speed, Air, Real Nice Truck, I'd Say Even Showroom Condition, 100,000 Mi
\$12,995



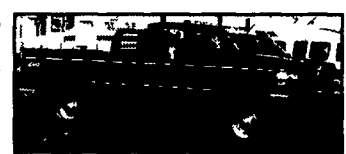
98 DODGE RAM 2500 4X4 LARAMIE SLT SPORT
Quad Door, Short Box, Cummins Turbo, AT, AC, PW, PDL, Tilt, Cruise, Black/Black Leather Interior Real Sharp! 100,000 mi
\$17,995



99 FORD F250 XLT 4x4 SUPER DUTY QUAD CAB
Longbed 7.3 Powerstroke, AT, AC, PW, PDL, Side Steps + Rhino Liner Mint Showroom Condition, 112K
\$19,500



85 CHEV 20 H.D. 2WD PU 3/4 TON
8600 GVW, 6.2 Diesel, Only 70,000 Miles Previously State Truck (You Know How They Maintain These) This is a Real Good Truck, Starts Right Up, Drives Good & Inspected Sale Priced to the 1st Cash Buyer
\$1,000



97 FORD F250 XLT 4x4
7.3 Powerstroke DSL, AT, AC, PW, PDL, Tilt, Cruise, Nice Straight Truck, 120K
\$13,995



96 FORD F250 XLT 4x4 H.D.
8600 GVW, 460 V8, AT, AC, PW, Pdl, Cruise, Tilt, All Black & Sharp, Like New Cond! 100,000 mi
\$8,995



95 FORD F350 XLT 4x4
Crew Cab, Longbed, H D 7.3 Powerstroke Dsl., AT, AC, PW, PDL, Cruise, Tilt, & More Fully Dealer Maintained + Like New Throughout! 170K
\$13,995



95 FORD F350 XLT
4x4 1-Ton DSL 7.3 Powerstroke, AT, AC, PW, PDL, Tilt Cruise Plus More, Dk Green Color, 140K
\$11,995



96 DODGE RAM 2500 4x4 SLT LARAMIE EXT.
Longbed, Cummins Turbo Dsl, 5-Sp, AC, PW, PDL, Cruise, Tilt, + More 200K All Dealer Maintained + Super Tight Condition, Looks New As Well!!!
\$13,995



95 TOYOTA 4-RUNNER 4X4 LIMITED
V6, All Black, Sunroof, Leather & All Options, 100,000 Mi.
\$8,995



95 FORD F250 XLT 4x4
Longbed, 5.8 V8 351, 5 Sp., 8800 GVW, Only 90K, AC, PW, PDL, Cruise + Tilt, Showroom Looking Condition
\$10,995



96 DODGE CARAVAN CUSTOM TRAVEL VAN
3.0 V6, AT, Dual AC, TV, VCR, 100,000 mi Extra Nice Van, Ready to Travel!
\$5,995



88 CHEV S10 4x4 Ext CAB
2.8 V6, AT, AC and Fully Loaded, Nice Clean Truck and Good Running As Well. 100,000 Miles, PA Inspected and Ready To Work Today.
SPECIAL \$1,595



92 FORD RANGER
4.0 V6, AT, AC, + Full Power All Black & Looks Like New! 100,000 mi Great Truck to Work Around the Farm For a Great Wholesale Price 1st Come First Served
\$2,000



96 DODGE RAM 2500 4x4 SLT LARAMIE EXT.
Longbed, Cummins Turbo DSL, 5-Sp, AC, PW, PDL, Tilt, Cruise, + More Low Miles, Only 90,000 Showroom Condition
\$17,995



99 DODGE RAM 3500 4x4 LARAMIE SLT QUAD CAB,
Longbed, Cummins Turbo Dsl 5-Spd, AC, PW, PDL, Cruise, Tilt, P Seat, Stereo and More 140k All Black and Showroom Condition Well Cared For PA 1-Owner
Firm \$19,995



97 FORD F250 XLT 4x4 EXT LONGBED
7.3 Powerstroke DSL, AT, AC, PW, PDL, Tilt, Cruise, All 100% Black and Super Clean 100,000 Mi, 1-owner!
\$15,995



95 FORD F250 XLT 4x4 EXT CAB
Longbed, Dually, 7.3 Powerstroke DSL, 5-Speed, AC, + All Power Options Nice Clean Truck, Ready to Pull Your Trailer! 150K
\$11,995



98 FORD F350 SUPREME
18' Box Truck 11,500 GVW's, Rollup Door, Plank, New Tires, Brakes, & Insp, AT, AC, Stereo, 5.4 Triton, 100,000 Mi, Superb, Sharp We Used Truck All Year! **\$8,999**

Disclaimer Mileage listed for your convenience only, it is approximate, not to be relied on as exact Sorry for any inconvenience



1999 International Model 4900,
Engine OT 466E, 230 H P, Trans (6+1) 7-Speed, Susp Springs, Mileage 149,000, GVW 33,000, Color White, AC, 11R22.5 Tires, Very clean, Body Supreme 22 ft Van Body, No side door, No lift gate, Translusion Roof, E Track
Price \$25,900
Without Body \$24,400



1997 International Model 4700,
Engine Dt 466, 190 H P, Trans (6+1) 7-Speed, Susp Spring, AC, Hyd Brakes, Bench Seat, GVW 25,500, Mileage 163,000, Cab White, Box White, Body Supreme, 22 ft Van Body, No Side Door, No Lift Gate, Translusion Roof, E Track, Lined with Plywood Inside
Price \$21,000
Without Body, \$19,500



1996 Freightliner FL-70,
Cummins 8.3, 250 H P, 6-Speed, Spring Susp, AC, 140,261 Miles, 33,000 GVW
\$21,700

CAT W CUMMINS
RIFE MOTOR CO., INC.
768 N. Franklin St., Chambersburg, PA 17201
Fax: (717) 263-4293
Phone: (717) 263-8518
Ask For Steve Bender

Woodcrest Motors

SPECIALIZING IN TRUCKS & VANS
1200 North Reading Rd., (Rt. 272) Stevens, (Lancaster Co.) PA 17578
717-336-3130



99 PONTIAC MONTANA
4 Dr., V6, AT, A/C, Most Options, Blue, 65,000 Miles
\$11,300



96 DODGE RAM 2500 SLT,
8 Pass, V8, AT, Dual A/C, Most Opt., Blue, 86,000 Miles
\$8,900



01 DODGE RAM 2500 CARGO VAN
V8, AT, A/C, PW, PL, T. C. Cass, 25,000 Miles Grey
\$10,995



01 HONDA ODYSSEY LX
V6, AT, Dual A/C, Most Opt., 7 Pass, Dk. Green, 69,000 Miles
\$16,995



99 CHEV ASTRO LS
AWD, V6, AT, Dual A/C, Most Options, Dk Blue, 64,000 Miles
\$10,800



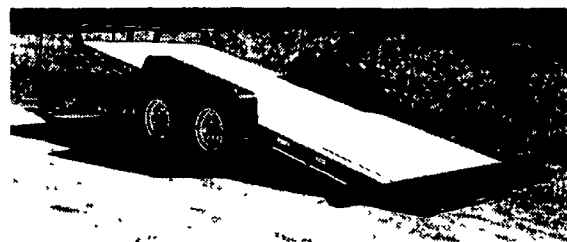
01 CHEV 1500 EXPRESS LS
V8, AT, Dual A/C, 8 Pass, Most Options, White, 61,000 Miles
\$13,500

6 Ton 14' Lo Profile Hydraulic Dump w/Ramps & Tie Downs

\$6,000



6 Ton 'AgriKing' Gooseneck \$4,850
16500# GVWR Available in Pintle Hitch



5 Ton Capacity Tilt Bed 13500# GVWR \$4,350

KEYSTONE TRAILERS Inc.

• SALES • PARTS • SERVICE • HITCHES
1657 Rohrerstown Rd. • Lancaster, PA 17601
Phone 717-581-9020 • Fax 717-581-9055
www.keystonetrailers.com
Leasing & Financing Available
Mon.-Wed.-Fri. 8:00 a.m. to 6:00 p.m.
Tues.-Thurs. 8:00 a.m. to 5:00 p.m.
Sat. 8:00 a.m.-12:00 noon

90 DAYS SAME AS CASH AVAILABLE

Motorcycle - ATV - Snowmobile
Utility - Landscape - Cargo
Car Haulers - Race Trailers
Hydraulic Dumps - Concession
Construction - Equipment Haulers
1500# to 12 Ton Capacity
8' to 48' Length
Replacement Parts - Accessories
Lighting - Wiring Hitches & Towing
Accessories - Brake Control - Ramps -
Tie Downs - Tool Boxes - Motorcycle
Carriers - Cargo Carriers - Wheels &
Tires - Bicycle Racks - Load Control
Straps & Equipment
On Site Tag, Title & Registration