

**35 TRUCKS AND TRAILERS**

Buy a pre-owned car or truck for auction net + 7% (Manheim online). Eagles Nest Auto Buyers' Agent, Duncannon, PA. Toll-free 877/801-2230

1967 Autocar DC99, cab & chassi, less motor 5 & 4 trans. 58 Rockwell restore or parts VG cond. Trojan 4x4, rubber tire loader w/cab, runs & works, needs motor repair, Fair cond, \$2,350/obo. 973-992-8759

'98 Chevy Cheyenne 3500, 2WD, 6.5 turbo diesel, auto, PS, PB, air, AM/FM, 9000 GVW, 49,000 one-owner miles, dark blue, \$10,900. 717-733-2873

'00 GMC SL 1500, 4x4, 4.8 V8, auto, PS, PB, PL, cruise, tilt, air, Am-Fm cass., 71,000 one-owner miles, charcoal, \$11,900. 717-733-2873

1987 Mack tri-axle, 300 6v, dynatard, 18ft alum box, elec tarp, both drive rears rebuilt, new tail gate, level 4 Int. \$23,700. 215-723-7575

1984 Ford F750 truck w/ 16' Morgan thermoking refig body, 133K mi, \$4,500 obo. 717-484-0595.

73 Int., complete rebuilt motor w/less than 1000 miles, new front brakes, air brakes, pintel & ball hitch, air lines for trailer, new dump floor, 26,000 gvw (no CDL), solid & ready for work. 610/678-7782

1986 Mack triaxle dump truck, alum body, exc cond. 610-279-0134, 610-656-6905

1999 Mack CL713 triaxle dump truck, exc shape, 100K mi. 610-279-0134 or 610-656-6905.

1995 IH 9400 series, tri-axle dump, road ready. \$25,000. 717-292-4615

**1999 MACK, MODEL 9266B**  
6x6 - E7350 E. Tech Engine - 2926 hrs., 48 x 3100-20NHS 12 ply tires with New Leader L7020 spreader body (new cost \$147,000) will sell for \$75,650/M.O.  
Call Woodhue @ 609/723-6211, Mike or Joe

•1971 Ford LN700, 26,000 GVW, 16' grain body dump, \$2,200 obo.  
•1984 Ford 250 pickup truck, \$500 obo.  
**(717) 647-9492**



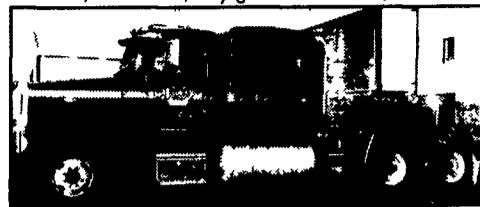
'94 FLD 120, 48" Flat Top, 430 DD, JAKE, 9 Speed O/D, Rockwell 4.11 Rears, New Brakes, New Tires, Excellent Condition, Well Maintained \$8,995  
**(717)-432-3348 (717)-319-4527**



72 Diamond Reo - S/A Dump Tk. DD Diesel - 10 Spd. Road Ranger - 30,000 GVW - Good Tires - 222,752 miles - Not Insp. Dependable. \$3,500 - 717-225-5542



93 Peterbilt 378, 63" flat top, 60 series, 430 Detroit, 18 spd trans, 693k miles, very good cond • \$11,900 obo



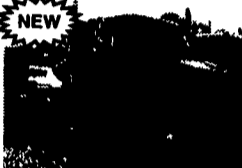
95 Ford F450 Super Duty, 5 spd trans, flatbed dually, 212k miles • \$3,500 obo  
98 Trailer 25 ft Moritz gooseneck, tandem axle, 7000# axle, 5 ft Dovetail w/ramps • \$3,200 obo  
Call 717-776-7806 • Cell 717-226-5418 Keith

**RIVER'S TRUCK CENTER, INC.**

2975 Cape Horn Road  
Red Lion, PA 17356

**(717) 244-4003**

2000 River Central PA Sterling & Wabco Spd Dealer



**2000 STERLING L7501**  
205 Cummins Diesel, 5+2 Speed 26,000 GVW



**(2) 1987 DIAMOND REO GIANT**  
L-10 300HP, 8LL, Jake Hendrickson, 17 1/2 Steel Traxle Dump



**86 FORD LT 9000**  
Tri-Axle, NTC 350, 8LL Trans, 17% Steel Body



**78 FORD 10' DUMP w/PLOW**  
Gas, Air Brakes, 39,000 GVW, 88,000 Miles \$5,400

**Diesel Owners!**  
Get HP & Fuel Mileage

We Have Performance Chips For The Following:

- Dodge Cummins 40-120 HP + 175 Ft. lbs. More Torque
- Chevy Duramax 70-210 more HP up to over 400 lbs. of Torque
- Ford Powerstroke 60 - 80 - 120 add more HP up to 200 lbs. of Torque
- VW TD 35 more HP add up to 35 + 45 lbs. of Torque

Free Installation 2003 Performance Chips & Exhaust are here & in stock

We carry complete line 4" exhaust systems for..... \$550  
\*Torque Converters \*Valve Bodies \*Exhaust Brakes \*Gauges \*K&N Air Filters

You Get More Horsepower & Torque

We Carry The Best Stuff For Your Truck  
Propane For Diesel - Nitrus For Diesel

**(717) 249-2255 Call Now!!! Ask for Shawn**

**LOVE'S AUTO SALES INC.**

1970 Spring Road, Carlisle, PA 17013

Sales, Service & Inspection

Call About Our Gas Chips

Better Fuel Mileage



**99 FORD F350 CREW CAB DUALY**  
Power Stroke Diesel, AT, XLT, A/C, Most Options, 56K Miles, White



**99 FORD F450 10 FT. FLATBED DUMP**  
2WD, Power Stroke Diesel, AT, A/C, 75K Miles, Red #F2075



**00 CHEV 3500 WALK-IN UTILITY BODY**  
AT, A/C, C. T, 454 V8, White, 59K Miles



**2000 FORD F250 4x4 XLT**  
6- Spd., Power Stroke Diesel, 93K Miles, Blue & Silver, Most Options #F2069



**99 DODGE 2500 QUAD CAB 4x4**  
Cummins Diesel, SLT, AT, 33K Miles, Green #D384  
2 In Stock



**99 FORD F350 CREW CAB 4x4**  
Power Stroke Diesel, AT, A/C, XL Trim 74K Miles White #F2063

**Truck World**  
2400 E. Cumberland St. Rt. 422 Lebanon, PA 17042  
**717-273-7995**



**97 FORD F350 10 FT. FLATBED**  
2WD, 5-Spd., 351 V8, A/C, 16K Miles, Red #F2076



**00 FORD F250 QUAD CAB 4x4**  
AT, XLT, Power Stroke Diesel, CD Player, Alloy Wheels, 67K Miles, White #F2070



**2000 CHEVY 3500 HD**  
15000 GVW, Contractor Dump, 5 Spd., 454, 37,000 Mi.



**97 GMC TOPKICK 6500**  
CAT Diesel, Allison Automatic, 26,900 GVW Rear Sofa Bed and Sleeper Conversion, Both Hitches, Ready to Tow COME & GET IT!!! #G235



**96 INTERNATIONAL 4700 CAB/CHASSIS**  
LoPro T444E Diesel 4 Spd Allison AT 145 WB 84 CA 21,000 GVW A/C 72K Miles 2 To Choose From



**2000 FORD F350 CREW CAB DUALY 4x4**  
Power Stroke Diesel, 6-Spd., XLT, A/C, Most Options, 55K Miles, #F2064



**95 FORD F800 16 FT. STAKEBODY W/LIFTGATE**  
5.9-230HP Diesel, 7-Spd., Only 33K Miles, 30K GVW, White



**00 FORD F350 4x4 XLT**  
Power Stroke Diesel, AT, A/C, Most Options, 42K Miles, White #F2079



**96 FORD F450 SUPER DUTY**  
Chassis & Cab w/Long Wheel Base, Power Stroke Diesel, 5 Spd, A/C, Most Options, White #F2058



**00 FORD F350 4x4**  
Power Stroke Diesel, Power Angle Plow AT A/C, Stereo, 38K Miles Red



**95 DODGE 3500 4x4 12 Ft. Stake Body Dump**  
Pwr. Angle Plow, 360 V8, 5-Spd., A/C, 85K Miles, White



**01 DODGE 2500 4x4**  
Cummins Diesel HD, 6-Spd., A/C, SLT, Most Options, 38K Miles, Red



**96 FORD F350 CREW CAB DUALY-POWER STROKE DIESEL**  
2 WD, XLT, AT, A/C, Most Options, 94K Miles, Red



**2000 GMC 2500 SLE UTILITY BODY**  
2 WD, 350 V8, AT, A/C, Most Options, Gold, 32K Miles #G241



**99 FORD F250 QUAD CAB 4x4**  
XLT Power Stroke Diesel AT A/C Most Options 151K Miles White Absolutely Beautiful \$18,995



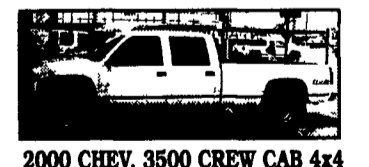
**1999 DODGE 3500 QUAD CAB DUALY 4x4**  
Cummins Diesel, 5 Spd., SLT, Red



**CARGO VANS,**  
1998 - 2000 - 5 In Stock 3/4 Ton & 1 Ton, 1-Diesel, Call For Information



**95 FORD F800 12 FT. DUMP**  
26K GVW, 370 V8, 5-Spd., 2-Spd. Rear, 35K Miles, Red



**2000 CHEV. 3500 CREW CAB 4x4**  
AT, 350 V8, A/C, Cass., 44,000 Miles, Ladder Rack, White, #C641



**94 DODGE RAM 2500 4x4**  
Reg Cab, Cummins Turbo Diesel, SLT, AT, A/C, Most Options, 137K Miles Black #D378 \$12,995



**99 GMC 3500 CREW CAB DUALY 9 FT. FLATBED**  
w/Both Hitches 454 AT PS PB A/C 29 000 Miles White Perfect Condition! #G233