

### Top Dollar Paid

for  
Wide Attic Flooring,

Barn Grainery Boards, Wide Roof Boards, Unpainted Barn Siding, Big Barn Beams 7"x9" and bigger in Heart Pine, White Oak, Yellow Pine, White Pine Take Chestnut in any size and boards from, too! Interior salvage of early Brick and Stone Houses, hand hewn House joists and rafters. Old loghouse & logcrib Barn removal. Also early mills and factories.

**610-857-1002** 6:30 AM to 9 AM  
Chester County, PA 8:00 PM to 11 PM

Pay the most — also paying more for materials brought to me Also selling materials!!!

### Reclaimed Building Materials

Baummer Sawmill, 599 Fame Ave., Hanover, Pa. has the following for sale. Weather Barn Siding, Red & White Oak Character Grade Flooring, Chestnut Beams, Weathered Chestnut Boards UP To 18" Wide. Resawed Chestnut Lumber. Chestnut Flooring, Red Sand Stone and Cut Corner Stone. Barn Foundation Stone. Buying Log Bank Barns & Log Homes. Also Buying Tracts of Timber.



Inventory changes daily, If You Need It We'll Find It.

Please call days **717-637-6879** or **717-229-2781** evenings.

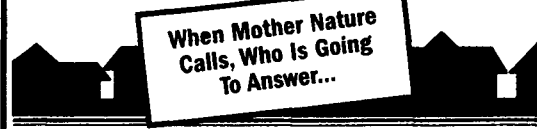
**BUILDINGS AND SUPPLIES**

### TOP \$ PAID

Attic Flooring Grainery Boards, All In Pine.

Also... 3" Pine Boards 12" or Wider

**570-383-6300**



### ACR METAL ROOFING & SIDING DISTRIBUTORS

Agricultural • Commercial • Residential  
Specializing in Standing Seam

- Energy Efficient
- All Trims & Accessories
- Steel Building Packages
- Call For Free Literature
- Many Colors & Profiles Available
- CGI - Silvercote Insulation

**WE DELIVER**

**800-325-1247**  
Fax: **610-670-6530**

### \$ WHOLESALE \$

1/2" to 8" PIPE 1/2" to 8"

Prime, secondary, structure pipe Farmers, Manufacturers, Fabrication — Will Cut To Your Size Needs —

#### STEEL TUBING

1 1/2" Sq.	3 1/2" Sq.	2"x2" Sq	2"x4" Rect
2 1/2" Sq	4"x4" Sq.	3"x3" Sq.	3"x2" Rect

20' to 24' Lengths 1/4" to 1/2" Thick

### BRICKER'S PIPE YARD

1970 Frank Road  
**717-261-0095** Chambersburg, PA 17201

### Hico Concrete Forms

100 - 2' x 4' Forms with accessories

**\$6,000**

**717/432-8403**

### SYMONS Concrete Forms

380 Panels 2' x 8'

1000 Universal Forms

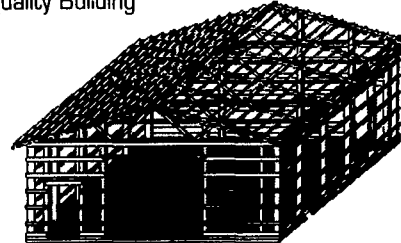
350 - 2'x4' Lots of Fittings

**717-423-6974**

## Pole Buildings

Toll Free **1-877-937-5324**

Plans available or custom design your own Purchase a building kit or let Lech Bros build you a quality Building



Computer Aided Design

**Free Estimates**

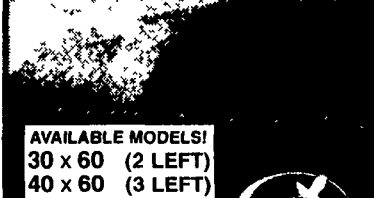
QUALITY BUILDINGS AT AFFORDABLE PRICES

CONTRACTING

UP TO **60% OFF!!**  
**STEEL BUILDINGS**



EQUIPMENT STORAGE WORKSHOPS



AVAILABLE MODELS!  
30 x 60 (2 LEFT)  
40 x 60 (3 LEFT)  
40 x 80 (2 LEFT)  
50 x 120 (2 LEFT)  
50 x 150 (3 LEFT)



MAINTENANCE-FREE EASY TO ERECT

Limited time offer  
**800/825-5059**

### EXTENDED SPRING SALE



The Hayden  
2,240 sq ft  
\$58,999  
Garage Optional

22x26 2 Story Room Addition \$16,200



Buy Direct from the factory and SAVE!!



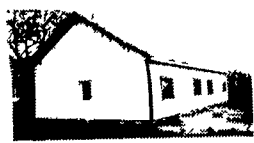
\$2225  
1,669 sq ft \$56,700  
Call for a FREE brochure!

We CUSTOM build any home, any plan Design services at no extra charge!!!  
Prices include Installation

**STURDY-BUILT**  
800-722-0466  
www.sturdybuilt.com 100% Owner/Builder financing available

Special!  
24x40x10 - (1) Walk-in Door,  
(1) 10x10 Slider  
Special Price \$6,895

### WAGLER BUILDERS



### Post Frame Specialists

Custom Built Pole Buildings - Garages - Horse Barns - Machine Sheds  
Also Specializing In: Reroofing Barns - Garages - Siding Barns  
Satisfaction Guaranteed!

Stephen Wagler  
516 Windy Tor Road  
Bird-In-Hand, PA 17505

(717) 656-0138  
Fax (717) 656-7914

- 30x50x12
- 2-10'w x 10'h garage doors
- 1-3' entry door

**\$13,250**

- 40x60x12
- 1-12'w x 12'h sliding door
- 1-10'w x 10'h garage door
- 1-3' entry door

**\$16,500**

- 40x80x12
- 1-12' x 12'h sliding door
- 1-10'w x 10'h garage door
- 1-3' entry door

**\$21,400**

- 50x96x14
- 1-14'w x 14'h sliding door
- 1-12'w x 12'h garage door
- 1-3' entry door

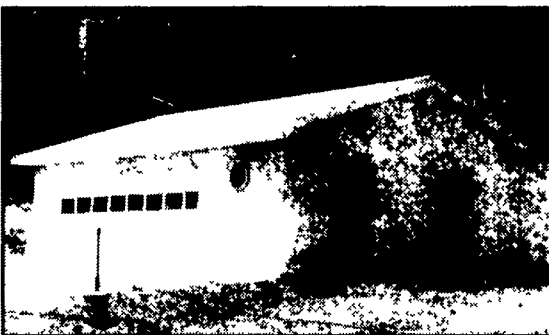
**\$28,400**

- 40# per sq. ft. snow load on trusses
- Financing Available
- Call for free literature or see us at [www.pioneerpolebuildings.com](http://www.pioneerpolebuildings.com)



### PPB, Inc.

Can We Build One For You!



### Stock Buildings

- 24x24x8
- 2-9'w x 7'h garage doors
- 1-3' entry door

**\$5,750**

- 24x40x10
- 2-9'w x 8'h garage doors
- 1-3' entry door

**\$8,400**

- 30x32x10
- 2-9'w x 8'h garage doors
- 1-3' entry door

**\$8,400**

- 30x40x10
- 2-9'w x 8'h garage doors
- 1-3' entry door

**\$9,250**

- 30x64x10
- 2-10'w x 10' sliding doors
- 1-3' entry door

**\$13,250**

Prices included tax, delivery materials, and labor for construction.

## Pioneer Pole Buildings, Inc.

716 South Rt. 183, Schuylkill Haven, PA 17972

Toll Free 1-888-448-2505 Fax 1-888-448-2515

[www.pioneerpolebuildings.com](http://www.pioneerpolebuildings.com)

- 30 year warranty Everlast painted steel (your choice of color on roof, sides, trim).
- Steel is G 100 painted and heat roll formed by Everlast Inc., the best known roofing made.

