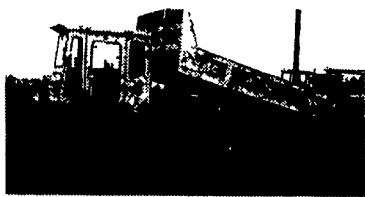


**1A CONSTRUCTION EQUIPMENT**

Cat 941B 80H3516, 374 hrs on eng, new trac & carriage, 717-543-0906 eve  
 Cat 955K track loader, runs good, good UC, \$7500; Liebert 911 excavator, good condition, runs good, w/thumb, \$10,500. 570-759-2433

MF off terrain fork truck, 6000 lb capacity w/21ft 3 stage lift, Perkins 4 cyl gas eng, in chassis rebuilt, \$13,000. 610-323-3910  
 325L Trackhoe, 955K loader, FD5 dozer 6-way blade. MF dsl tractor + attachments. 908-755-4431  
 Cat D9G dozer, cab, ripper, U-blade, good runner, job completed, \$14,500. 814-442-5614.

Telescopic forklift, 1998 JCB 550, 10,000lb capacity, 44' reach, 2200 hrs, exc. cond. 717-626-4860  
 Woodmizer LT40G Super Hyd. Sawmill, w/remote work station, computerized set work, debarker, board return & trailer pkg. 1400 hrs, well maint. v.g. cond. but my accountant says it's time to upgrade \$24,000. Call Pat 570-546-5317.



**Morooka MST-2500 Crawler Dump**  
 rubber tracks, rebuilt engine, good U/C **CALL**



**84 Cat 973**  
 Excellent UC OROPS **\$36,500**



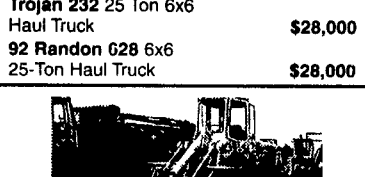
**95 JD 744E Log Forks w/Grapple**  
 New Rubber, Ride Control, AC **\$42,500**



**92 Terex Haul Truck 3066**, Cummins Diesel Good Condition **\$36,000**  
**Trojan 232 25 Ton 6x6 Haul Truck** **\$28,000**  
**92 Randon 628 6x6 25-Ton Haul Truck** **\$28,000**



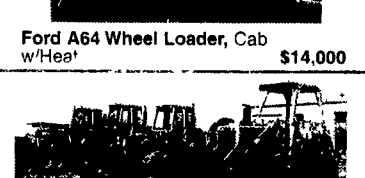
**(2) 99 Case 95XT, 7100 Hrs** **\$13,500**  
**Case 1840** **\$8,000**



**Ford A64 Wheel Loader, Cab w/Heat** **\$14,000**



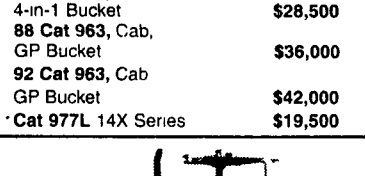
**Cat 955H Crawler Loader, Good Condition** **\$10,000**



**88 Cat 963, OROPS 4-in-1 Bucket** **\$28,500**  
**88 Cat 963, Cab, GP Bucket** **\$36,000**  
**92 Cat 963, Cab, GP Bucket** **\$42,000**  
**\*Cat 977L 14X Series** **\$19,500**



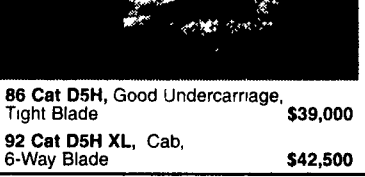
**92 Komatsu WA-600 Wheel Loader, 435hp, 7 1/2 yd Bucket, Ready to Work** **\$35,000**



**86 Cat D5H, Good Undercarriage, Tight Blade** **\$39,000**  
**92 Cat D5H XL, Cab, 6-Way Blade** **\$42,500**



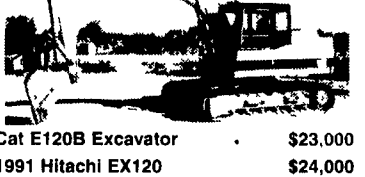
**92 Cat 312 Excavator** **\$30,000**



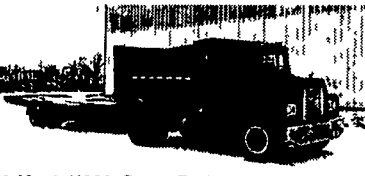
**Cat E120B Excavator** **\$23,000**  
**1991 Hitachi EX120** **\$24,000**



**88 JD 450G, Good U/C, 6 Way Blade, Rebuilt Engine** **\$19,000**



**94 Lull 644 Highlander II, 6000 Lb Capacity, 34' Reach JD Diesel, 48" Pallet Forks w/Tilt** **\$27,000**  
**92 Lull 844B, JD Diesel** **\$26,000**  
**94 Gehl 663, Forks & Bucket, JD Diesel** **\$25,000**



**73 Mack U600, Dump Bed Good Rubber 18' Tandem Axle Tilt Bed Tag-Along Air Brakes** **\$6,000**  
**\$3,500**

**EQUIPMENT**

**JD 555 Crawler Loader** **\$14,000**  
**Cat 980B Wheel Loader w/Forks** **\$18,500**  
**94 Cat 416B 4x4, Ext. Hoe** **\$25,500**

**PAVING EQUIPMENT**

**Hyster 350C Roller** **\$5,000**  
**Case 252 Tandem Vibratory Roller** **\$6,500**  
**95 Ingersol Rand BA30 Tandem Vibratory Roller** **\$6,500**  
**Stone Wolfpack 2500 double drum asphalt roller** **\$2,500**

**Weaver's Equipment Sales**  
 RD#1, Box 418, Milton, Pa. 17847  
 Phone: 570-523-9598

**For Rent or Sale**  
**94 Hitachi EX120-3, 5550 Hrs 28 Shoes w/Hammer** **\$35,000**

**75 JD 555, 5880 Hrs 90% UC, 4-in-1 Bucket, w/Backhoe Attach** **\$15,500**

**88 Cat D4H, Canopy, 7320 Hrs, 80% UC** **\$29,000**

**98 Stone SD54 Vibratory Compactor 118 Hrs, 54" Drum Drive Excellent Condition** **\$22,500**  
**88 Bomag BW 213D, 5664 Hrs 82" Drum Drive** **\$23,000**

**NEW ADDITIONS**  
**96 Cat 973 OROPS New UC** **\$35,000**  
**96 Cat 943, Cab, 10,600 Hrs 80% UC** **\$28,000**  
**90 Cat 963, Cab 4400 Hrs, New UC, New Cutting Edge & Teeth** **\$42,500**  
**2000 Positrak 4810 614 Hrs, 105 Hp** **\$29,000**  
**Volvo 825B Articulated Truck, 6x6** **\$36,000**  
**96 Komatsu PC75UU Cab 3475 Hrs, Road Line Shoes w/Blade New Paint** **\$20,000**  
**95 Komatsu PC75UU Cab, 4000 Hrs, Rubber Tracks w/Blade New Paint** **\$20,000**  
**95 Bomag BW172, Cab 3500 Hrs 66" Drum Drive** **\$25,000**

**90 Case 888, 5350 Hrs, 24" Shoes, Leveling Kit, Mechanical Thumb** **\$19,500**  
**98 Kobelco SK150LC IV, 7780 Hrs, 24" Shoes** **\$36,000**

**97 Terex SS636, 1855 Hrs, 6000 lb Lift** **\$27,000**

**94 Komatsu PC400LC5, 6170 Hrs 36" Shoes 12" Wide, 98,000 Lbs** **\$35,000**  
**94 Komatsu PC400LC, 6170 Hrs 36" shoes, 12" Wide** **Call**

**95 Komatsu PC20-7, Canopy, 2360 Hrs, Rubber Tracks w/Blade** **\$10,500**

**99 Bobcat 763, 1015 Hrs w/Forks** **\$10,500**  
**98 Case 1840, 2830 Hrs 50% Tires** **\$8,900**  
**98 Gehl 5635, 1105 Hrs 40% tires** **\$11,000**  
**96 Bobcat 853, 2140 Hrs** **\$8,500**

**96 Cat 307SSR, 1574 Hrs Rubber Tracks w/Blade, Side Shift Boom** **\$25,500**  
**92 Cat 307SSR, Cab 4850 Hrs Rubber Tracks, w/Blade** **\$17,500**

**JD 450C Crawler Loader, 3837 Hrs Good UC, New Paint** **\$12,500**  
**84 JD 350C, 4450 Hrs, 80% UC Rebuilt Engine** **\$12,000**

**96 Cat 311B 3300 Hrs 20" Shoes** **\$36,500**  
**97 Cat 312B, AC, 4580 Hrs** **\$39,500**

**98 Komatsu PC38UUM, 2220 Hrs Road Liner Shoes, Canopy** **\$14,000**  
**98 Komatsu PC38UUM, 2290 Hrs, Road Liner Shoes, w/Blade** **\$13,500**  
**93 Komatsu PC38UU, 2600 Hrs Rubber Tracks** **\$12,000**

**89 Dresser A450E Motor Grader, Cab, Scarifier 14' Moldboard** **\$24,000**  
**88 JD770BH, Cab 14' Moldboard** **\$28,000**  
**90 Champion 720A 6x6, 14' Moldboard Cab** **\$29,000**  
**77 Champion 715 Motor Grader, 12' Moldboard, Scarifier, 10' Snowplow, Good Tires** **\$13,000**

**93 Cat E70B, Cab 3100 Hrs, Rubber Tracks Good Paint** **Call**

**93 Komatsu PC28UU, 3028 Hrs, Rubber Tracks, w/Blade** **\$9,500**

**89 Dresser A450E Motor Grader, Cab, Scarifier 14' Moldboard** **\$24,000**  
**88 JD770BH, Cab 14' Moldboard** **\$28,000**  
**90 Champion 720A 6x6, 14' Moldboard Cab** **\$29,000**  
**77 Champion 715 Motor Grader, 12' Moldboard, Scarifier, 10' Snowplow, Good Tires** **\$13,000**

**88 Ingersol Rand SD40D, 2275 Hrs 54" Drum, Drum Drive w/Shell Kit & Knockdown Blade** **\$19,500**

**95 Case 580 SL, Cab, 4980 Hrs, 4x4, Ext. Hoe, New Tires** **\$27,500**  
**91 Case 590, Cab, 8600 Hrs, 4x4, Ext. Hoe 50% Tires** **\$19,500**  
**95 Chevy 3500 Service Truck, 6 5 Dsl** **\$8,900**  
**88 Ford F350 Dually Mechanics Body, Crane, Electric Lift Gate, New Motor, New Tires** **\$6,900**

**93 Komatsu PC50UU, 3900 Hrs** **\$11,000**  
**93 Komatsu PC50UU, 3700 Hrs** **\$12,500**

**92 Komatsu PC75UU, Cab, 4200 Hrs Rubber Tracks w/Blade** **\$15,500**  
**94 Komatsu PC75UU 4900 Hrs** **\$19,000**  
**93 Komatsu PC75UU, Canopy 3600 Hrs Rubber Tracks w/Blade** **\$16,500**  
**94 Komatsu PC75UU, 3800 Hrs Rubber Tracks w/Blade** **\$17,000**

**Too Ugly to Picture**  
**1995 Komatsu PC 200, 16,000 Hrs Grapple** **\$18,500**

**86 JD 410C, Cab, 4800 Hrs 4x4, Standard Hoe** **\$17,000**

**92 Komatsu PC75UU, Cab, 4200 Hrs Rubber Tracks w/Blade** **\$15,500**  
**94 Komatsu PC75UU 4900 Hrs** **\$19,000**  
**93 Komatsu PC75UU, Canopy 3600 Hrs Rubber Tracks w/Blade** **\$16,500**  
**94 Komatsu PC75UU, 3800 Hrs Rubber Tracks w/Blade** **\$17,000**

**95 Case 580 SL, Cab, 4980 Hrs, 4x4, Ext. Hoe, New Tires** **\$27,500**  
**91 Case 590, Cab, 8600 Hrs, 4x4, Ext. Hoe 50% Tires** **\$19,500**  
**95 Chevy 3500 Service Truck, 6 5 Dsl** **\$8,900**  
**88 Ford F350 Dually Mechanics Body, Crane, Electric Lift Gate, New Motor, New Tires** **\$6,900**

**86 JD 410C, Cab, 4800 Hrs 4x4, Standard Hoe** **\$17,000**

**92 Komatsu PC75UU, Cab, 4200 Hrs Rubber Tracks w/Blade** **\$15,500**  
**94 Komatsu PC75UU 4900 Hrs** **\$19,000**  
**93 Komatsu PC75UU, Canopy 3600 Hrs Rubber Tracks w/Blade** **\$16,500**  
**94 Komatsu PC75UU, 3800 Hrs Rubber Tracks w/Blade** **\$17,000**

**90 CAT 953, Cab, 50% UC** **\$37,000**  
**'94 CAT 953B Cab 8360 Hrs 90% U/C, New Paint** **\$65,000**  
**88 Cat 953, OROPS 3750 Hrs 50% UC New Paint** **\$35,000**  
**86 Cat 953 Industrial Cab, 8740 Hrs 90% UC 4-in-1 Bucket** **\$32,000**  
**82 Cat 953, OROPS, 8 990 Hrs 50% UC** **\$27,500**

**87 JD 750B, OROPS 6-Way Blade, New Paint** **\$22,000**

**98 Komatsu PC40MR, 3790 Hrs Steel Tracks, New Paint** **\$18,000**  
**96 Komatsu PC40R, 3200 Hrs** **\$15,000**  
**94 Komatsu PC40, 3150 Hrs** **\$13,000**  
**93 Komatsu PC40, 3480 Hrs** **\$12,500**  
**92 Komatsu PC40, 4400 Hrs** **\$13,000**

**95 Hitachi EX120-3 5700 Hrs AC** **\$27,500**  
**88 JD 455G, Cab** **\$19,500**  
**79 Cat 955L, 13X Series** **\$19,500**  
**Cat 951B, Very Good UC, No Rops** **\$9,500**  
**95 Mec 1948HT Electric Manlift** **\$2,900**  
**Komatsu 30 Forklift, 6 600 lb Lift, Gas Eng** **\$7,000**

**2000 Komatsu PC120-6, 1100 Hrs, AC, 8'2" Wide** **\$53,000**  
**99 Komatsu PC120-6, 1670 Hrs, AC, 8'2" Wide** **\$49,500**

**JCB 1550, Cab 2WD Std Hoe** **\$8,500**  
**Available 99 Tramac 1000 lb Hammer** **\$4,500**  
**Ford 655A Backhoe OROPS 2WD** **\$8,900**  
**73 Cat 930, Cab, Good Tires** **\$18,500**  
**79 JD 850, OROPS Angle Blade** **\$17,000**  
**88 JD 655B, Cab Heat & Air 8615 Hrs** **\$18,000**

**95 Hitachi EX120-3 5700 Hrs AC** **\$27,500**  
**88 JD 455G, Cab** **\$19,500**  
**79 Cat 955L, 13X Series** **\$19,500**  
**Cat 951B, Very Good UC, No Rops** **\$9,500**  
**95 Mec 1948HT Electric Manlift** **\$2,900**  
**Komatsu 30 Forklift, 6 600 lb Lift, Gas Eng** **\$7,000**

**96 Cat 312, AC, 5230 Hrs, New Paint** **\$32,500**  
**93 Cat 312, 5670 Hrs** **\$28,000**  
**93 Cat 312, 5700 Hrs, AC, New Paint** **\$29,000**

**2000 Hitachi EX200-5, 2900 Hrs** **\$69,000**

**95 Hitachi EX120-3 5700 Hrs AC** **\$27,500**  
**88 JD 455G, Cab** **\$19,500**  
**79 Cat 955L, 13X Series** **\$19,500**  
**Cat 951B, Very Good UC, No Rops** **\$9,500**  
**95 Mec 1948HT Electric Manlift** **\$2,900**  
**Komatsu 30 Forklift, 6 600 lb Lift, Gas Eng** **\$7,000**

**96 Cat 312, AC, 5230 Hrs, New Paint** **\$32,500**  
**93 Cat 312, 5670 Hrs** **\$28,000**  
**93 Cat 312, 5700 Hrs, AC, New Paint** **\$29,000**

**Weaco Equipment**  
 4009 Conrad Weiser Parkway, Womelsdorf, PA 19567  
 New Location 4 Miles East Of Myerstown on Rt 422  
**610/589-5555 Toll Free 877/529-9328**  
 Rentals Available Day, Week, or Month  
 Financing and Lease Purchase Available No Sunday Calls