

## Public Auction Register

Closing Date Monday 5:00 P.M.  
of each week's publication

Internet Sale Register will be updated  
by Friday at 12 Noon

ATTENTION AUCTIONEERS  
All sales register info needs complete address,  
street, town, county & state.

**THURS. MAY 8 - 10AM** Potter (Yates Co.) New York, Mr. and Mrs. Earl Horst Farm Machinery Dispersal by Pirrung Auct. Inc. 585-728-2520.

**THURS. MAY 8 - 1PM** Farm Equip., Primitives, Tools, Antiques & Collectibles, 170 Rebers Bridge Rd., Berks Co., PA, Horst Auct., AU438L, 717-859-1331.

**THURS. MAY 8 - 3PM** Sealed Bid Sale of Surplus Items including Truck Bodies, Trailers, Golf Carts, Forklifts, Floor Sweepers, Shop Equip., Tools, etc., Surplus Asset Sales Co., Inc., 201 Progress Dr., Montgomeryville, PA, 215-661-9780.

**THUR. MAY 8 - 4PM** Real estate brick rancher on 4 acres at 1910 W. Rt. 897, Denver, corner Rt 897 & Forest Rd) by Randal V. Kline, Roy E. Good Jr., Keith Snyder Auct. 717-733-1006

**THURS., MAY 8 - 4PM** Tools & snow blower at 126 Main St., Denver, PA, by Art Pannebecker Auct. AU001476-L 717-336-6983.

**THURS. MAY 8 - 6PM** 2 building lots west end of Bartville Rd., Colerain Twp, Kirkwood, PA, 2.01 acres, 1.29 acres, by Whyte's Auctions AU2608-L, 717-786-7666

**FRI., MAY 9 - 11AM** Monthly dairy sale at Middleburg Area Market & Auct., Middleburg, PA, 570-837-2222

**FRI. MAY 9 - 1PM** State Graded Feeder Pig Sales Carlisle Livestock Market, Inc. 548 Alexander Spring Rd., Carlisle. Market phone: 717-249-4511; Buyer's phone: 717-249-0396; Fax: 717-249-5507; Jim DeGaetano - Home: 717-249-2359.

**FRI. MAY 9 - 4PM** 1.5 sty brick dwl. on 8/10 acre lot in Farmersville, W. Earl Twp., PA by Kline, Kreider & Good, 717-733-1006. Open House 4/19 & 19, & 5/3.

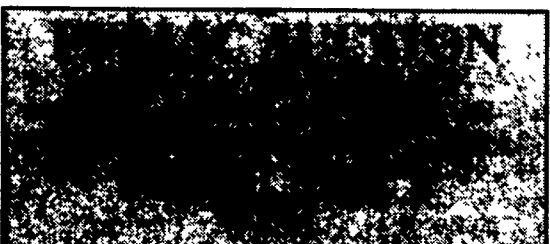
**FRI. & SAT. MAY 9 & 10 - 5:30AM Fri. & 9AM Sat.** The Paul M. Byers Estate Auction at the CV Antique Engine and Machinery Association Grounds. Cochran Auct. 301-739-0538.

**FRI. MAY 9 - 6:30PM** 25 acres of woodland with 2 ponds in Caernarvon Twp, Lanc. Co., insp. 4/19 & 26, and May 3, 1-3PM, by Tracey L. Jones Auct. AU3607-L, call 610-286-7834.

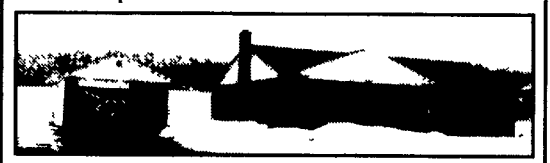
**SAT. MAY 10 - 8AM** Lg. equip. auction of Tractors & combines, lawn & garden, antiques at Kingsdale on Rt. 194 between Taneytown, MD, & Littlestown, PA, by Dennis Wolgemuth AU#2357 717-428-0922.

**SAT. MAY 10 - 8AM** Farm machinery, tractors, trailers & vehicles. Kingsdale, Located on Rt 194 between Taneytown MD & Littlestown, PA Auct. Dennis Wolgemuth AU#2357, 717-428-0922.

**SAT. MAY 10 - 8:30AM** Wood working tools, antique & mod., AC G tractor & equip., L & G equip., guns, at 621 Old York Rd., Fairview Twp., York Co., PA, by Rentzels Auct AU-761-L/AU-3269L 717-764-6412



**LOCATION:** 1910 W. Rt. 897, Denver (Cocalico area). Take Rt. 897 N. from Reinholds through Blansport toward Cocalico to property on right (Corner Rt. 897 & Forest Rd.) W. Cocalico Twp



"One owner" all brick & siding ranch style house w/1,432 sq ft Country eat-in kitchen, dining area, living rm., 3 bdrms., full bath & large 1st floor laundry/mud rm. Full bsmt. Plaster walls & stained trim throughout. All on large, level 4 ACRE tract 300'x621' w/frontage along Rt. 897 & Forest Rd. Zoned Ag

**NOTE:** Inspection by appointment or Open House Sat., April 26 & May 3 from 1 to 4 PM. For color brochure, land plotting, or financing call Auctioneers 717-733-1006

**DORA E. HORNING**  
Jay L. Horning, P.O.A.  
314-5679 OR 336-2655

Randal V. Kline, Roy E. Good Jr  
Keith Snyder Auctioneers  
Lic #499, 2116, #3433  
717-733-1006  
www.klinekreidergood.com

## Restaurant Equipment Auction

### Mon., April 28, 2003 9:00 AM

#### Rentzels Auction Gallery

**DIR:** North of York in Manchester, Pa. I-83 to Emigsville Exit 24, Proceed East on Rt. 238 for 3/4 mile to Rt.181 (N. George St., Extd.). Left onto Rt. 181 N for 3 1/2 miles. Turn right at Rentzel's Auction Sign & white rock.

**Very clean modern equip. from the York Red Lobster due to remodeling, and complete liquidation of a local Deli.**



C44 Hobart complete dishwashing system w/ hood system 10 years old, Victory 4 Door Refrigeration System, 2 Door Victory Cooler, 1 Door Victory Cooler, Salad bar w/ 2 unit refrigerator, S.S. Under the counter refrigerator, S.S. serving station, S.S. work tables, some w/ sinks, S.S. work table w/ freezer, (2) food warmers, (2) Commercial microwaves, Ardent 6' Deli Case Euro style, Taylor soft serve ice cream machine, water cooled, Flavor Burst (8 Flavor) computerized, 5' salad bar, 4' sandwich maker, SS meat slicer, 3 bay sink, 4' counter top deli case, counter top pizza deck oven, 2 burner cooktop, 4 bin Jet Spray, 5' dry bakers case, SS: condiment set, cone & cup holders, pans, SS shelving, topping bar, hot fudge warmer, trash cans, containers, utensils, salad bar access., tables & chairs for 36 people, large wooden tables & chairs & more.

Approximately 2 hour auction be on time.  
Auction held inside plenty of parking.  
Items need to be removed by May 5, 2003.  
Terms: cash or good check

All announcements day of auction take precedence over printed material.

**Auction Conducted by:**  
**Rentzel's Auction Service**  
Blaine N. Rentzel AU 761-L  
Dave Conley AU 3269-L  
Emigsville, Pa 717-764-6412

## PUBLIC AUCTION

### SAT., MAY 10, 2003

#### 12:00 P.M.

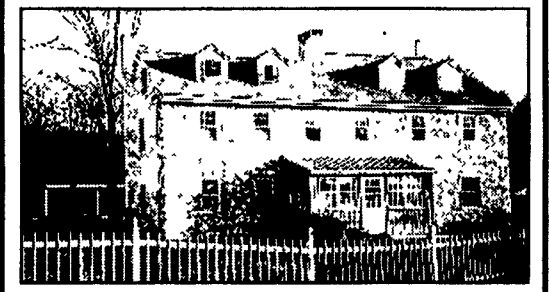
### 4 ACRE FARMETTE IN BERKS COUNTY

#### Beautiful 4 Bedroom Stone Farm House w/Orchard

Approx. 1 mile from French Creek  
1402 Park Road, Elverson, PA 19520

**AUCTION HELD FOR:  
PHIL & ANNETTE HERTZLER**

**Direction:** Follow Route 23 East out of Morgantown to Twin Valley Road - left, follow to stop sign - right, approximately 100 yards to left at "Y" (Hopewell Road) Follow several miles to home on left (Hopewell Road Changes to Park Road.)



4+ acre farmette in Berks County, Daniel Boone School District, Union Township, Pennsylvania. Nicely landscaped property within 1 mile of French Creek State Park and other state game lands, large orchard and vegetable garden, fenced front yard. Improvements consist of a 3 story, 4 bedroom, stone farm house (circa 1796). Half of third floor is a bedroom area with 2 skylights and 2 dormers, other side used for storage space, both areas have their own stairway; Second floor has 3 bedrooms and full bath, with closets in hallway; First floor has a large kitchen/dining/living area with a working fireplace, exposed beams, lots of oak cabinets, new windows, and track lighting - renovated in 1995, also a nice size office area on first floor with shelving and cabinet space. Basement has washer and dryer hook-up and storage space. Improvements also include a 24x24 run-in shed, fenced in pasture area, a 12x20 workshop with built-in shelving space, a newly renovated barn with overhang and large second floor, 1 car garage.

**SPECIAL FEATURES OF PROPERTY:** Orchard and vegetable garden; near French Creek State Park; On-site well and a completely new sandmound sewage system; House has deep window sills, updated 200 amp electric service; central vacuum; some very old original doors; Hot water baseboard heat, oil furnace; built-in corner cupboard.

**TERMS:** 10% down day of sale, settlement in 60 days, announcements sale day take precedence over ad.

**OPEN HOUSE DATES:** April 19, April 26 (12-3), May 2 (4-6).

**BROKER PARTICIPATION INVITED:** a 1% commission will be paid at settlement if your client purchases this property. For information on how to qualify call Petersheim Auctioneers @ 717-575-4263.

Attorney, Linda Kling  
**PETERSHEIM AUCTIONEERS**  
717-575-4263  
AU-003806-L

## PUBLIC AUCTION

### OF VALUABLE REAL ESTATE, HOUSEHOLD GOODS, ANTIQUES & J.D. RIDING MOWER

### SAT., MAY 17, 2003

Sale at 9:00 A.M.  
Real Estate at 2:00 P.M.



**LOT - 130' FRONTAGE, 185' IN DEPTH  
ALONG CLEARFIELD DR.  
APPROX. 1/2 ACRE**

Located at 111 Crestview Ave., New Holland, Earl Twp., Lanc. Co., PA. Turn off Rt. 23 (New Holland Pk.) near J.B. Zimmerman Hardware Store, north on Crestview to sale.

2 Story brick & frame w/vinyl siding dwelling w/replacement windows, two car garage attached w/elect door opener & closet, laundry w/built-in cabinets, full bath & closet, eat-in kitchen w/Quality raised panel cherry cabinets, pantry cupboard, elect. stove, dishwasher, family room w/brick fireplace, sliding glass doors to wooden deck, living room, foyer w/two closets, office. Second floor has three bedrooms w/closets, one w/hot tub, master bedroom has large walk-in closet w/cedar closet, bathroom w/linen closet Full basement, rec-family room w/built-in corner cupboard, storage room, furnace room, oil fired hot air heat, elect. water heater, central air, 200 AMP service w/generator hookup system, public water & sewer, storage shed in rear lawn, PVC fence.

**Auctioneer's Note:** Home in excellent condition & ready to move into. Nice landscaping, mature shade, horseshoe drive. Open for inspection Sat., April 26 & May 3 from 2:00 to 4:00 p.m. or for appointment call 354-8871. 10% down day of sale, balance on or before July 1, 2003

Terms by:  
**Martin H. & Vera B. Weaver**

Lunch Available No Out-of-State Check

Aucts  
Robert E., Jeffrey R & Michael L. Martin, 717-656-7770  
AU000580L  
Randall L. Ranck  
Douglass Good, Atty  
www.remartinauctions.com

## RETIREMENT FARM AUCTION

### FOR MR. AND MRS. EARL W. HORST

#### Crawlers - Farm Machinery - Tractors - Tools - Household

### THURS. MAY 8, 10:00 AM

#### Potter (Yates Co.) New York

From State Route 364 (Penn Yan to Potter Road) 5 miles west of Penn Yan or 4 miles east of Potter, turn north onto Wilkins Road to first farm on right Retiring from farming selling will be:

**Cat D5 agricultural crawler** with 34 in. wide tracks, 3 pt hitch, 2 hyd. out. lets and cab. **Cat D6-B crawler**, 28 in. wide tracks, 2 hyd. outlets, rear mount ripper unit; **Case 1845** diesel skid steer loader on steel, selling with materials bucket, pallet forks sell separately; **IH 1086** diesel tractor, open station, on steel, 2 p.t.o.'s, 2 hyd. outlets; **Ford 8000** diesel tractor, open station, on steel, Genesis III engine, 2 remotes; **Ford 5000** diesel tractor, open station, on steel, single remote, **JD 6600** diesel combine on steel with 12 ft. grain head; **MF 510** Perkins diesel combine on tracks, 4 row narrow corn head, 13 ft. grain head, **IH 510** grain drill, 18 disc, with grass seeder; **JD 7000** 4-row 30 in planter with dry fert.; **Brillion Shure** Stand seeder (app. 12 ft.); **NH 353** grinder/mixer with hyd. auger; **NH 320** baler with belt thrower; **NH 116** hydroswing 14 ft. haybine; older **NH 479** haybine; Two (2) steel rack bale kicker wagons, **Beaudoin** self propelled bale tuber with Honda engine; **Harsh 190** "Haymogenizer" mixer wagon with Butler digital scale; **NH 56B** rake; Hedlund Martin p.t.o. lagoon pump; **NH 892** chopper, 2-row 822 narrow corn head, grass pickup head; **NH 28** blower; **Miller Pro** (3 yr. old) model 4100 3 beater self unloading box with roof, front left unload, on tandem gear; **NI 3** beater s.u. wagon on single gear; **2 Killbro** gravity box wagons; **Homebuilt** high moisture corn grinder/blower; Two (2) **Patz** single chain feed conveyors; **White 448** (18 in. x 6 b.) trailer plow with spring reset, **JD 24** ft. field cultivator with spring shanks, hyd. fold wings, rare tine attachment; **IH 4-row** 3 pt. cultivator; **Demco** 4-row applicator unit with drive wheel; **NH 680** tandem axle manure spreader with gate; Tandem axle wagon running gear, 9 ft. hyd. dump box on tow along tandem axle gear; Old pull behind road grader; Two (2) flat rack wagons; Old 8 ft. x 20 ft. tandem axle livestock trailer, 5th wheel or bumper tow, suitable for on farm use; **Oliver** p.t.o. unit (1000-540) for Cat D5 or 6; **Industrial** 18 ft. x 24 in. belt conveyor; 40 ft. cargo box for storage; Boom type trailer sprayer with 400 gal. poly tank; etc.!

**Shop Items:** (right after household): **Miller M295** AC welder, **Franklin** engine hoist (cherry picker); shop press; **Lincoln 225** welder; power hack saw; Torches and gauges; Bolt index and inventory; skid tank with hand pump; couple hundred gallon air tank; Morter mixer; etc.-etc !

**Household:** (First at 10:00 a.m.): Real neat self contained wood fired cooker unit all stainless steel with 40 gal Kettle with cover over wood burning box (used for heating water, canning, butchering, etc.); Kitchen Queen wood burning kitchen stove with oven, real nice!; King wood burning room heater; Enterprise small size food grinder with elect. Motor; 1 gal glass jar elect. butter churn; Empire serpentine front chest of drawers in mahogany; Double bed, complete, 3 drawer chest with mirror; sideboard; couple nice quilts; bookcase and books; hand turn noodle maker; carpet runners; 8 ft. bench with bootjack ends; lawn rockers; swing set; box lots and more! A good sale here! Machinery at about 11:15 a.m. Plan to attend the Horst retirement sale May 8th at 10:00 a.m. Lunch and comfort facility on site!

**Owned by  
Earl W. and Mary R. Horst  
585-554-3545 (please no Sunday calls)**

**Terms:** Cash or honorable check from known persons in good standing with Auction Company Nothing to be removed until settled for in full. Acceptable ID for bidder card.

Auction Conducted by  
**James P. Pirrung and Associates**  
**PIRRUNG AUCTIONEERS, INC.**  
P.O. Box 607 Wayland, New York  
Phone: 585-728-2520 Fax: 585-728-3378