

**COMPLETE AUCTIONEERING SERVICE
PUBLIC AUCTION**

Wednesday, April 30, 2003 @ 1:00 pm

Selling antiques & collectibles from the Former Home of Eleanor Burdett, Freeburg PA, & Others. To be held at the Freeburg Community Building, Freeburg PA
Directions: From Harrisburg take Rts 11 & 15 north to the Rt. 35 exit to Selinsgrove, PA. Proceed through the intersection and travel south on Rt 35 to the town of Freeburg. In Freeburg turn right onto Freeburg Road and travel one block to auction on the left at the former Freeburg-Washington Community Center. Signs posted
Antiques & Collectibles: Salt glazed hanging salt container; (2) large Tramp art frames; Redwing pitcher #547; Redwing bowl; (3) sections of Wrought iron fencing; Spongeware bowl; Transferware compote; Ironstone teapot; Austrian portrait bowl; RS Prussia two handled platter; Belek boat dish, lg. granite coffee pot; great bronze bird signed Gesswhite? #2365; 75+ pieces of Hall autumn leaf; old hardware; Stanley #239 plane, levels; lanterns; spoke shave; Ritter dentist's chair; moisture tester in wooden case; foot sizer, punch bowl sets; drying fingers, (5) Hitchcock chairs; (2) pair of leather riding boots; Pioneer brand tobacco tin, food grinder; early toaster; scales, crocks & jugs, mantle clock; Glen Lock round paragon milk bottle; Homestead, Mill Hall sq. Paragon milk bottle; Sealtest crate; early spatulas, ladles, strainers, & fork; Jadeite mugs; (2) oak machinist's tool boxes; Ironstone tea leaf teapot (lid damaged); 1971 Hummel plate; Stemware; pressed glasses; salt dips; Moyer Bros. Bloomsburg bottle; granite muffin tin; Labelle Hen & Tom plates; drop leaf tea cart, Hall teapot, several pieces of Nippon, misc. Depression glass; cups & saucers; (15+) Longaberger baskets; silver plated dishes; brass candleholders; lots of Irvin's tinware; glass basket; glass washboard; milk glass including Fenton; 40 Fostoria glasses; pocket watches including Progress w/sterling case; stoneware mixing bowls; lots of modern Oriental style rugs; gilded frame w/jewelry tree; chest of drawers; sprinkle can; cast iron Dauschund boot cleaner; Brass gong; rocking chair; plank chairs; drop leaf table w/drawer, brass spittoon, dye Ken John peel Wedgewood 1829 pitcher; Staffordshire Hunt scene fine bone china; Weatherby England bowl; England hunting scene plates; Grimm kids books; wooden Chinese checker board; piano stool, no back; Coins: Large one cents, 1851, 53, 54, 55; 1788 Massachusetts coin; V-nickels; 1871 three cent; Indian head pennies; book ends; corner base cabinet; sewing machine; sad irons; #320-1 china head doll; Heubach Koppelsdorf; German china head doll; A3M, 390 Armand Marcelle; variety of doll clothing; 7 day bonnet girl postcards; Girl Pioneers of America manual, 1918; John Wannamaker organ ad, 1917; silk Japanese flag, poor; bracket lamp from Freeburg Mansion; Set of Measuring tins, (3) ship models; ext & int. Freeburg church photos; church pen & ink, D. Allen, Modern & old quilts; hand tied canopy; mahogany desk; Stereo-Optic cards & viewer; postcards, German Cherub figurines; friction tin car; tin litho kazoo, Ironstone pitcher & bowl, Oriental rug 3x6, vintage clothing; English Christmas bells; Madam Alexander dolls, cedar chest.
Household Items: Sofa & recliner; wing back chair; Duncan Phyfe coffee table, double reclining love seat; (3) TV sets; lots of sewing goods; Scooter. Craftsman elec. lawn mower; hand tools, garden tools; elec Craftsman blower; lawn furniture, ladder, wheelbarrow, stacking lockers; vacuum cleaner; outdoor glider, Bird bath, concrete planter, Craftsman band saw, Delta band saw, Shop Vacs, Pfaltzgraff dishes; Corningware.

KENNETH E. HASSINGER
 RR 02, Box 985
 McClure, PA 17841
 (570) 658-3536
 AU-001532-L



NEIL A. COURTNEY
 R.D. #1 Box 239
 Richfield, PA 17086
 (570) 539-8791
 AU-002651-L

Antique Detective Questions And Answers

This bronze vase with raised, color enamel Chinese motifs has been in our family for some years. It has no markings. Does it have other than sentimental value?

D.E. - Bonita Springs, FL



You appear to have a 19th century Chinese bronze vase probably made for export. It could sell in a shop for around \$1,200.

I purchased this desk for \$25 a few years ago. It is mahogany and has a paper sticker that says "Hepplewhite" and a brass plate with the number 134. I would like to know what it is worth for selling purposes.

P.F. - Staten Island, N.Y.

Your Hepplewhite (Federal style) tambour writing desk is a revival style made from 1876 to the 1920s. Similar examples sell in shops for around \$500/600.

I have four color prints published by Currier and Ives. They represent American Homestead, winter, spring, autumn and summer. The way, Published by Currier and Ives entered according to Act of Congress in the year 1868 by Currier and Ives in the District Court of the U.S. for the Southern District of New York, 152 Nassau St., NY. are they worth anything?

H.P.F. - Middlesex, N.J.

If they are indeed the original prints and not restrikes, they could sell at auction for \$700 and up.

Can you tell me what this tall (46") metal stand was used for and when, as well as value? At the top is what appears to be a drop box, like a mail box, that says "Offerings For The Poor" At the bottom is a key lock for removal.

C.C. - Garden City, Mo.

In the late 19th century some cities and churches placed these charity boxes in various places to collect money for the poor. It could sell at a specialty auction house, such as Red Baron, 6450 Roswell Road, Atlanta, GA 30328. It could sell for several thousand dollars.

After my grandmother's death we found around 100 pieces of pottery called Roseville. How would I go about selling them? Enclosed is a photo of a vase that you could give me an idea of the value.

A.L.F. - Homosassa, FL

Since a wide variety of types of Roseville American art pottery were made from 1892 to 1954 you should take good photos of each

(Turn to Page B28)

**Steam-O-Rama
Spring Fling Weekend
8th Annual Consignment Auction
Yard Sale and Fun Tractor Pull
Tractors, Antiques, Literature, Collectibles
Auction - Friday May 2, 5:00 P.M.,
Saturday May 3, 8:30 A.M.**

Held at Steam-O-Rama showgrounds, 1673 Manor Road, Windsor PA, from 183 New Exit #18, take Rte 124 east 7 miles to Manor Rd., Right on Manor 1.3 miles to showgrounds on right.

Accepting consignments - Collectibles, literature, toys for Friday evening, tractors, gas engines, farm equipment, lawn and garden, tools for Saturday.
FRIDAY 5:00 - Literature and Collectibles: JD & other equip. advertising and sales lit.; collectibles and memorabilia.

Modern Farm Toys - '70s and '80s JD toys, JD airplanes, combine, toys added all week.

Small items - toolboxes, wrenches with cast names; old wooden benches; odd jars.

SATURDAY, 8:30 A.M. - Beginning with wagon loads of tools and small items. Garden Tools. Gas powered tools;

Gas engines from the collection of Austin Lint, York New Salem, Hummer 1 3/4 HP on cart, Arico 2 HP on cart, 2 Domestic 1 HP on cart, Witte 2 Hp on cart, Waterloo 13/4 HP, JD type E 1 1/2 HP on cart, Foos Type J 11/2 Hp on cart, Fairbanks Z 2 HP, New Holland 2 Hp Type W Engine, IH gas or kero 3 HP, IHC 3-5 HP, 2 new engine carts, lots of engine parts and accessories.

Tractors - 1956 Economy and snow blade for economy; E-3 Co-Op (original); JD 730 diesel; Oliver 70 parts tractors. Ford 2000 w/loader (gas).

Farm related items - JD 20/30 series front and rear weights; JD A-B-G rear wheel weights; JD Clam Shell fenders w. brackets; JD 45 loader and manure bucket, snow bucket for 45 loader; Misc. rear wheel weights; Lg selection JD parts; assorted farm equipment, farm related tires.

Miscellaneous: New Holland grinder/plate mill; New Holland sm buck or cir. saw; Some household goods and furniture; lawn and garden tools and equipment; machinist tools including 2 vice drill presses, height gauges, taps and dies, pin gauges .061 to .750, index head, 2 and 4 flute set end mills 3/16 to 3/4, drill bits and counter sinks, air hoses, many more items arriving daily from April 28 thru week, consignments welcome, info below.

Terms: Cash or good check, all items must be settled day of sale. PA State sales tax will be charged on all applicable items. Sales tax numbers must be on file day of sale to receive exemption. Additional items accepted through Friday May 2 at 3:00 for evening sale and 8:00 P.M. for Saturday sale. Loading ramps and special equipment available. Call 717-244-2912 or 717-755-8312 for additional information or 717-246-3782 week of sale.

Other Events - Yard sale, Friday, Saturday and Sunday from 8:00 a.m. to 4 p.m. Spaces available by calling 717-235-1353 before April 28, 717-246-3782 after.

Fun Tractor Pull - Sunday May 4, beginning at 10:00 A.M. Tractors 1960 or older, open to anyone, small hookup fee. Good Food daily. Plenty of off road parking.

Volunteer Auctioneers: Dave Conley AU-3267-L, Blaine Rentzel #761, and others as available. To view gas engine pictures go to www.rentzelsauctionservice.com

**S PUBLIC AUCTION
OF VALUABLE TOOLS;
HUMMEL FIGURINES;
ANTIQUES
CAST IRON BANKS;
FURNITURE;
LONGEBERGER BASKETS
SATURDAY, MAY 17, 2003
AUCTION TIME: 8:30 A.M.**

AUCT. NOTE: An exceptional collection of good early carpenter tools, antiques, collectibles, and furniture. Come early we will be selling at two locations beginning at 9:30 a.m.

Auction schedule

8:30 a.m. Auction begins with collectibles
 9:30 a.m. Tools
 12:00 noon Hummels & Paper Mache' Santas
 2:00 p.m. Furniture

Auction For:

Harold W. & Nancy L. Diffenderfer

Auction conducted by
John D. Stauffer Auctioneers
 John - AU-1509-L John Jr. AA-1887-L
 Phone: 717-665-5099
 Manheim, PA

**KK Estate Auction KK
ANTIQUES • TOYS
& DOLLS • MAJOLICA
10 AM Wed. April 30th, 2003**

at the Ridge Fire Co along Rt 23 between Route 100 and Phoenixville, PA

Antiques: Oak Morris chair, dressing table, chests of drawers, deer hoof mirror, Victorian M T table, side chairs, stands, Mah. secretary desk, glass door bookcase, cherry BR set w/4 poster bed, Eastlake fire screens, one quite fancy Edison player w/oak horn Victrola Civil War bugle & lithos Old baskets & finger lamps Slag glass dome lamp. Enterprise counter top scales Blue dec stoneware Mini collection Bennington pottery.

35+ pieces of **Etruscan Majolica** Bamboo tea pots, various compotes and bowls Butter dishes Minton ironstone, bamboo & fan dinner service 50 pcs Fiesta Depression, Carnival, Fostoria & Candlewick glass. China bisque & porcelain. Collection of B&G & Royal Copenhagen plates

Tapestries & beaded bags. Diamond Victorian jewelry
Railroadiana: Lanterns, china, uniform, rules/regs, ephemera from Rdg Co., PRR & B&O

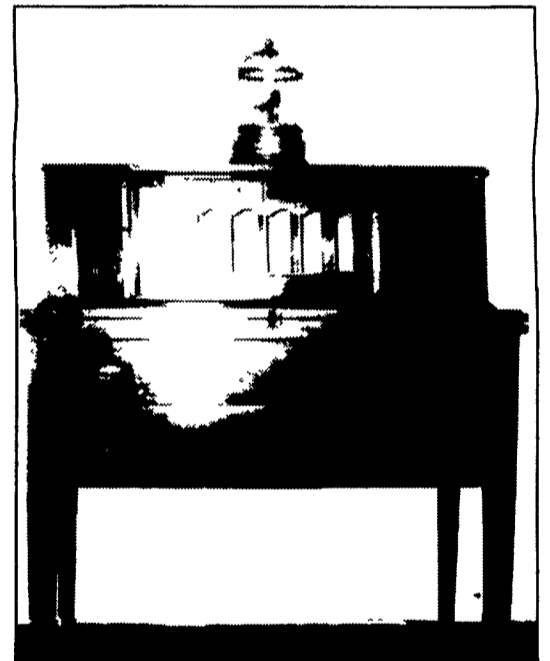
Boy Scout Collectibles: A collection from the 1950's Handbooks, patches, badges, uniform, Jubilee neckerchiefs

Toys Toys Toys: Some time around 2 PM we will sell 250 lots of Antique Toys Bisque character and baby dolls and accessories Hertz Schaub, Kley & Hawn #158, S&H, 370 AM, penny dolls of good quality

Toys: Bing Model T sedan, coupe & touring Tootsie Toy 348 Andy Gump cars & police car Key wind toys Cast iron trucks and tractors by Hubley, Arcade & Champion Cast iron still & mech banks Horse drawn toys Dozens of tin litho toys by Marx, Lehmann, Wolverine, Strauss Antique paper mache Halloween and other holiday decorations and candy containers

Preview: 8 AM - 10 AM Day of sale
Terms: Cash or good PA check 10% Buyer's Premium

**M&W MAURER & WILSON M&W
AUCTIONEERS
610-970-7588**
 Kathy Maurer, Gemologist, AU003006-L
 Curt Wilson, Auctioneer AU002827-L



**PUBLIC SALE OF
ANTIQUES AND PERSONAL
PROPERTY**

**MON. APRIL 28, 2003
SALE AT 2:00 P.M.**

To be held at 2152 N. Reading Rd. Rt. 272, Denver. At the German Trading Post, near Exit 21 of Pa. Turnpike.

Empire chest of drawers; grandfather's clock; Victor Victrola; Prizer Painter cook stove; Singer treadle sewing machine; rocker; child's desk; roll top desk; china closet; bedroom suite; cedar chest; dining room suite; sofa; recliner; Sharp T.V.; Kenmore dishwasher.

Watt bowls; milk white; Nippon; tea set; glass basket; occupied Japan; Lionel train; dolls; Disney collectibles; Beanie Babies; Golden Books; Howard Miller clock; wild turkey bottle; cookware; old cabbage cutter; tins.

Cub Cadet 7 HP snowblower with tracks like new; lawn mower; table saw; reciprocating saw; Craftsman drill press; bench grinder; shop vac; hand and garden tools; metal shelves; stepladders; fishing equipment and many other items too numerous to mention.

**Art Pannebecker
Auction Service**
 #AU001476L
www.artsauctionservice.com

717-336-6983
 717-336-2933 (Fax)
 Auction House
 717-336-2131