

HFA HORNING
FARM AGENCY, INC.
REALTORS • AUCTIONEERS • APPRAISERS

Morgantown, PA (610) 286-5183

- >> Courteous Real Estate Services
- >> Professional Auctioneers
- >> State Certified Appraisers
- >> Specializing in Farms and Land

SANFORD G. LEAMAN,
REALTOR/AUCTIONEER

101 White Oak Drive, Lancaster, PA 17601-4842
Phone: (717) 569-4264 - Toll Free: 1-800-836-8113
FAX: (717) 569-8847

Specializing in Farm Real Estate & Equipment
Web: www.lamnauct.com
Email: farmboy@lamnauct.com

Settled Last Week
Lycoming Co. 96 Acre Farm

Central Northumberland Co. 71 acre Amish equipped dairy farm. The setting is ideal, excellent soils, beautiful 3 bedroom farm house w/modern kitchen, Parquet oak floors and lots of excellent living area. There is a large horse barn, milk stable, implement shed and much more. Let me give you a private tour. You can have settlement now to honor your tax deferred exchange with possession at a later date. I'll handle those details for you. It won't last long - it's priced right.

Bradford Co. Rome area 155+/- acre dairy farm with 54 stanchions on 2" pipeline, 6 Surge milkers, bulk milk tank, silo and a beautifully remodeled 2 1/2 story farm house. There is an implement shed/young stock facility and in an area of good farms. Priced @ \$299,900 It should be sold very quickly at this price

Snyder Co. Is a dairy farm which has 38 stanchions, 17 free stalls and 2 implement sheds. This one has nice level to gentle slope fields and it is a go for this spring. There is a 2 1/2 story frame farm house with vinyl siding. Call now to buy this one.

Centre Co. 238 acres along Jacksonville Road, Bellefonte. Could be 2 farms if you want to have 2 smaller farms for brothers or family members. Call for details.

**NEED A 100 ACRE FARM
NEED NOT BE DAIRY**
in Troy, Canton Bradford Co. Area

**SUNDAY APRIL 27 1-4 PM
OPEN HOUSE
TWO LEB. CO. FARMETTES**

4.8 acre spacious newly remodeled 4 bedroom, 2 bath, 30x48 3 car garage, 1 acre pond, \$234,900
Dir: From Leb. 72N to 22W, Left on Harrison School Rd., Rt. on Jonestown Rd. to first property on left.

3 acre remodeled 3 bedroom farm house, pine plank floors, attached summer house w/gas fireplace, freshly painted out buildings - bring your horses or hobbies. \$195,000
Dir: From Leb. 72N to 22E, Left on Airport Rd. (At Countryside Family Rest.) to property on left.

Call Restoration Connection
For More Information
(717) 861-7770

**ENDLESS MOUNTAIN
REAL ESTATE COMPANY**

570-659-5684 Covington, PA

BRADFORD & TIOGA COUNTY

Income Opportunity! 2 sty. dwelling w/1920 total sq. ft., 3 BR/1 bath apartment on 1st flr. 2 BR/1 bath unit on 2nd flr., wrap-around porch. 1995 updates include electric, windows, & vinyl siding, over-sized 1 car det. garage, 0.61+/- acre lot bordering wetlands, low vacancy rates. Lots of potential!
\$59,900 (#1016)

All Wooded Parcel just waiting for your new home, 2.857+/- acres, survey complete, perk approved for conventional in-ground septic system. **\$19,900 (#1019)**

Immaculate Ranch-Style Home, "Like New", 2240 sq. ft. of living, 3 BRs, 2 baths, NG/FHA heat, central air, garden tub & separate shower unit in Master Bath, comfortable flr. plan, sunroom, deck, above ground pool, 2 car det garage w/lot siding, 1.37+/- acres, fantastic views. **\$129,500 (#1020)**

Nice Country Setting for this comfortable 2 sty. home, 4 BRs, 1 1/2 baths, NG/HWBB heat, spacious LR, 2 BRs & 1/2 bath on 1st flr., updated electric, open breezeway, 1 car garage, 1+/- acre, nice level yard, check it out!
\$79,900 (#1021)

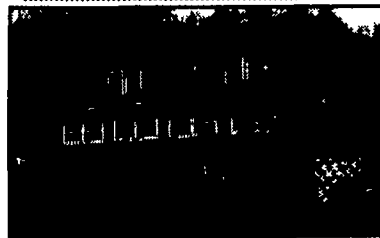
www.endlesstrealte.com E-mail: end@epix.net



Davis Real Estate, Inc.

121 W. Church St., Lock Haven, PA
570-748-8550

www.davisrealestateinc.com



COUNTRY AT ITS BEST!

Opportunity to live in the mountains with guest quarters. This is a rare property to find in Clinton County. Situated on **2.6 acres** with natural beauty that can't be duplicated. Call Patty Davis for details. **\$179,900**

OUTDOOR DELIGHT!

Located in Brown Twp., Lycoming County. Groomed trails for snowmobiling Skiing and hiking trails in area. Hunting on **State Land** within walking distance. Rails to trails within 7 miles or just relax on elevated enclosed porch and watch wildlife. **MLS#37291. \$125,000.**



Public Real Estate Auction

May 9, 1 PM

**West Marlborough Twp.,
Chester County, PA**

- 84 beautiful acres of brown gold
- Historic Brandywine Valley where dreams come true
- Adjoining New Bolton Research Center
- Located off U.S. Route 1
- Easy access to Philadelphia, Wilmington, Washington D.C.

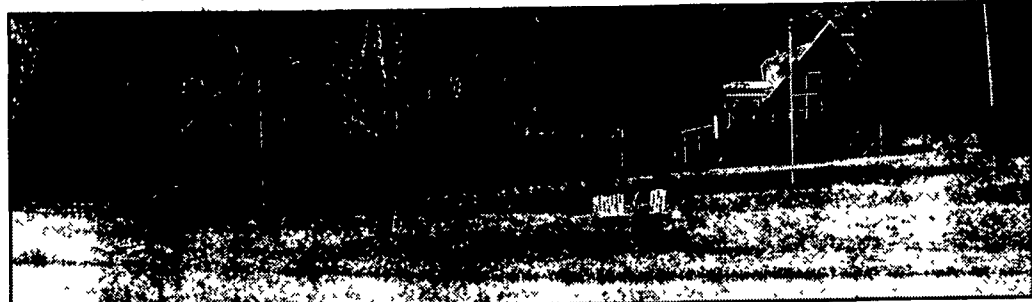
Special preview and pre-registration,
Saturday, April 26 12 to 2PM

**Call Max Spann Auction Co.
for details 888-299-1438**

Vernon Martin Associates Auctioneers #AU000582L



**If You Have A Special
Property You Need To Sell
"Talk to Paul or Diana"
(877) 327-0910 Direct Line**



HUNTINGDON - Wonderful 4-bedroom custom A-frame on 37 acres. 4 acres open. Large living room w/fireplace, hardwood floors & sunroom. Perfect for hunting, hiking, birdwatching, riding on powerline trails. Fish in trout stream. spring fed stocked pond! Secluded, but close to conveniences. Call today! **\$275,000 (HU4474346)**

ADAMS - 28+ Acres - Historic East Berlin. Tudor home with views all around 5-acre stocked pond w/dock and picnic area. Home w/1st flr master suite, large family room w/fireplace, custom kitchen, formal living & dining rooms. Office, game room and fireplace in finished basement. 2-car garage, tennis court & underground dog fence. Wonderful custom tongue & groove center aisle 6-stall bank barn w/plenty of hay & bedding storage. Stall mats, auto fly spray, electric & hot water. Wash stall & tack room, plus a large 17x27 garage. Bath rough-in. Nice 72x100 blue stone ring. Board and high tensile fence. Level area 200x300 clear for indoor. This home has all the trimmings (AD 2300477P9) **\$625,000**

ADAMS - Historic Gettysburg Complete horse facility on 40 ac. Move your horse business right in! Center aisle barn w/tack rm, stall mats, wash stall & more! 2nd barn w/stalls, hay storage & paddocks. Exercise track. New 62x130 "Cover All" indoor, round pen & hot walker. Custom built 42x60 equip. bldg. Completely fenced, pond and views! Beautiful stone/frame rancher w/new in-law suite. Lots of amenities. Don't miss this one! **\$749,000 (AD 2207721)**

FRANKLIN - Large custom home on 5.7 ac with view of Michaux State Forest. Includes pool with cabana. Center-aisle barn has 2 garages, hay storage, tack room, grooming area and Dutch doors to paddocks. Hot walker, board fence and blacktop drive. Convenient location. Call Diana now! (FL4483182) **\$315,000**

Schedule a FREE market consultation with Paul and Diana

FULTON - Farmette sized lots close to the MD line. 12-20 acres with views! In "Clean & Green". 1 hour from Frederick, MD. Call Today! **From \$69,900 - \$195,000 (FU3532136)**

YORK - Working Farm - Beautiful location in Dover, PA. 150.20 acres "Clean & Green" turnkey cattle operation ready for occupancy. 25x26, office + plus 16x20, Pole barn with dirt/gravel floor and additional uncovered feed lot. **\$900,000 (YK2205656)**

YORK - Wonderful large country home on 35+ gently rolling acres. Privately located colonial home w/big family room, custom kitchen w/tile floor, breakfast room, bay window, 1st floor master suite and guest quarters. Many desirable amenities! Large cattle barn, other equipment buildings. Easy use for horses, sheep or llamas. Completely fenced. Conewago Creek frontage. Owners motivated to sell! **\$495,000 (YK2107538)**



**Paul Gunder
Jack Gaughen Realtor ERA
717-762-7114 Ext. 116**

We're selling farms! See why at.....
www.penmarproperty.com
Member of PA Farm Bureau



DEMERE REALTY

171 N. Gardiner Rd.
Little Falls, NY 13365
Phone (315) 823-0288
George Demeree, Broker



#502 - (COBLESKILL AREA) Dairy farm w/270 acres - 125 tillable - 36x160 & 36x100 ft. milking barn for total of 120 cows & 38 heifers - fully equipped w/2" pipelines & B.T.'s - 2 lg. silos w/unloaders - two 20x80 ft. bunk silos w/6 ft. walls - 20x60 ft. heifer barn & out bldgs. - 3 B.R. home - 3 wells & lg pond - **\$370,000. Could be split into 2 separate farms.**

#809 - 530 A. dairy farm w/300 tillable - lg. free stall barn for 140 head, 2-story barn w/64 stalls, 160x43' one story barn, also dry cow barn, lg. parlor & holding area, 120x24' covered feeder w/concrete floor, 9 mos manure lagoon, 4 bay comm. shed, 2 lg. mach. sheds, horse barn & shop - also 3 lg silos w/unloaders, 400 ton grain drying bin & 19 rm. 2 fam home, lg 3 B.R. ranch plus 2 B.R. apartments - also featuring 100x230 lighted horse arena & stands - **\$850,000.**

B-150 - Attractive well kept dairy farm w/237 areas - 170 tillable - fields are lg. & mostly flat - Exceptionally nice 2 story 100+ yr. 4 BR home with several upgrades - 67 tie stall cow barn has tunnel ventilation, 40 head heifer barn, nice mach. storage bldg. - all on same side of road - **\$265,000.**

H-103 - 160 A. Dairy farm w/70 tillable & 80 pasture, 130x40 two story barn with 64 stanchions. Very nice 90x40 tool shed and good water supply. Excellent 2 story home with 8 rooms, enclosed porch, and attached oversized garage - **\$192,000.**

W-107 - Very well kept 320 A. dairy farm w/130 tillable - less than 10 yr. old tie stall 2 story barn for 126 cows has 23 ties for heifers - 2" pipeline, 100 gal. B.T. - 3 lg. silos w/unloaders - 40x60 ft machine shed w/shop - V.G. 13 rm. 2 story home w/hardwood floors & nice kitchen - also 1 trailer - **\$275,000.**

#348 - Attractive 250 A. dairy farm w/235 tillable - 2 milking barns - 2" pipeline, B.T., TMR mixer, 2 Harvestores w/unloaders, 54x90' Morton bldg. also V.G. 8 rm. home w/4 B.R.s & 2 baths - 1 pond & 1 creek - **\$330,000.**