

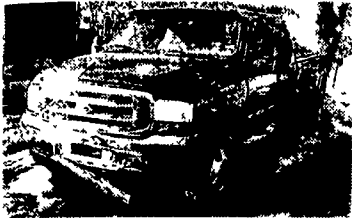
**THOMPSON MOTORS INC.**

Main Street & 412, Springtown, PA 610/346-8588  
5 Miles East of Route 78 (Exit 69)

9-9 Daily

9-8 Saturday

**REPAIRABLE DIESEL 4X4's**



'01 F350 CREW DUALY LARIAT, Black/Tan, 50K, A/T Fr. & Underside Damage . . . . . \$16,500



'99 F250 X/CAB 541C, A/T, Pickup Bed w/Utility Drawers. Needs Nose . . . . . \$12,500



'00 F250 REG. CAB XL, Stick, 35K. Front Mt. Over Frame . . . \$10,500



'97 CHEV. X/CAB, A/T, Silverado Trim, 100K, 6.5 Turbo Diesel. Left Front Damage . . . . . \$5,900

**ADDITIONAL TRUCKS IN STOCK:**

- 02 F450 Dually Diesel w/Landscape Dump . . . . . \$19,500
- '00 F150 X/C 4x4, Water Damage, Drives . . . . . \$12,500
- '95 Dodge Diesel 4x4 Reg. Cab, L. Front Dam . . . . . \$5,900
- '00 F350 X/Cab 4x4, Diesel, Needs Nose . . . . . \$9,900

Call 888/755-1041 for our 'Fax on Demand' Inventory List. We have new trucks coming in weekly. 150 Units in stock

'97 GMC SL 1500 Suburban, 2WD, 350 auto, PS, PB, cruise, tilt, air, Am-Fm cass., towing package, 78,000 miles, ex. condition, \$8,975. 717-733-2873  
'02 Dodge 1500, 8 pass, short whl base, 318 auto, PS, PB, air, Am-Fm cass, 19,000 miles, dark green, \$13,500. 717-733-2873

83 Chevy 50 ft. bucket truck w/chipper box, 91,968 mi., \$8,000.

83 Chevy w/750 caller hydro seeder, \$3,000.

Ditch witch 6510 trencher w/hoe & plow, 1,684 hrs., ex. cond., \$9,000 (trailer avail).

Call 301-791-3500

*Call For The Lowest Prices Around On Our Enclosed Trailers*

<p>23-ft Long 18-ft Deck &amp; 5-ft Dove Tail, Dual Tandem, Adjustable Pintle Plate, Oil Bath Axles, Spring Assist Ramps, Break Away Kit</p>	<p>7 X 14 Enclosed 7000# GVW Side Door, Stoneguard, 2 Interior Lights &amp; 1 Wall Mount Switch Roof Vent, Rear Stabilizer Jacks 6-inches Extra Height Barn Doors Ramp Door</p>
<p>7 x 12 Gooseneck Dumper, 10,000 GVW, Self Contained, Deep Cycle Marine Battery, Brakes on both Axles, Steel Bed Adjustable Coupler Stake Pockets, Rub Rails</p>	<p>16-ft Equipment Trailer 10 000 GVW, Wood Deck, 79-in Between the Fenders, Drop Axle Stand Up Ramps Channel Fenders Chain Basket</p>
<p>16-ft with Self Storing Ramps, Diamond Plate, Electric Brakes on both Axles, 2-3,500 lb Axles, Break Away Kit, Safety Chain Full 82-in Wide Between the Fenders with Dove Tail</p>	<p>24-ft Gooseneck w/20-ft Deck &amp; 4-ft Dove Tail Electric Brakes on 6,000 lb Axles, Gross GVW 12,000 lbs, Stake Pockets, Rub Rail Self-Storing Ramps, Adjustable Coupler</p>

**Appalachian Manufacturing, Inc.**  
Phone 330-222-2468 www.appalachianmfg.com Fax 330-222-2283

**East Coast Trailers**  
Honesdale, PA • 570-729-8870

Pop Up Dove Tail Optional

28' 25,500 lb. gooseneck, 102 wide, standup ramp, dove tail . . . . . \$5,750  
24' 14,000 lb. gooseneck, standup ramp, dove tail . . . . . \$3,700  
100 Trailers - All Sizes in Stock

**IN STOCK AT BINKLEY & HURST BROS. INC.!**  
**A TRAILER THAT DOES IT ALL!**

**PEQUEA**  
Traditlon In Progress

Deck Overs w/Flip Tail Hay Hauler Special  
Optional Slide In Ramps  
Skid Loader Models  
82" Inside Fender Width  
Deck Overs  
Also Miscellaneous Truck Bodies

**Call Binkley & Hurst Bros. Inc.**  
**For Trailer & Parts Accessories**

2,000-22,500 Lb Axles & Suspensions  
Metal Trailer Components  
Lights & Electrical Supplies  
Brakes, Tires and Wheels  
Jacks, Couplers & Hitches  
Hardwood Accessories & Much More  
*Check Our Prices On Receiver Hitches!*  
Buy Where The Quality is #1 At The Right Price

**Pre-Owned Trailers**  
**Choose One Now!**

UM5267 Econoline 12 Ton Electric Brake Trailer (Nice) . . . . . \$5,500  
UM5311 15 Ton General E.B. Air Brake  
UM5318 3 Axle Form Trailer  
Come & See, Heavy Duty . . . . . \$750

**BINKLEY-HURST BROS. INC.**

133 Rothsville Station Rd.  
P.O. Box 0395, Lititz, PA 17543-0395  
(717) 626-4705 1-800-414-4705 Fax (717) 626-0996

**24 HOUR PARTS & SERVICE**  
MON - 6AM TO SAT - 12 NOON

www.bergeys.com  
Ask For A Commercial Sales Specialist!  
**877-665-9369**

**Bergey's**  
TRUCK EXCELLENCE SINCE 1924

**TRUCK CENTER**

**ROUTE 113, FRANCONIA, PA**  
• 3 Miles South from the Souderton Exit of Rt. 309  
• Minutes from Exit 31 of I-476 (N.E. of PA Turnpike)

**GMC COMMERCIAL**  
"WE ARE PROFESSIONAL GRADE"  
SALES HOURS  
M-F 8:30am - 6pm  
Sat 8:30am - 12 noon  
CALL TOLL FREE...  
**1-877-665-9369**

**GMC COMMERCIAL**  
"WE ARE PROFESSIONAL GRADE"  
SALES HOURS  
M-F 8:30am - 6pm  
Sat 8:30am - 12 noon  
CALL TOLL FREE...  
**1-877-665-9369**

<p>CHOOSE 0% FOR UP TO 5 YEARS OR REBATE</p> <p><b>2003 GMC K3500 DUMP - 4WD</b> #65216, Vortec 6000 V8, Auto, Air Cond, Locking Diff, Plow Prep Pkg, 8' Heil Marauder 2-3 Yard Dump Body &amp; Pintle/Ball Combo Hitch SALE PRICE <b>\$28,900</b> PRICE INCLUDES \$3000 REBATE &amp; \$600 UPFIT ALLOWANCE</p>	<p>CHOOSE 0% FOR UP TO 5 YEARS OR REBATE</p> <p><b>2003 GMC 2500 HD w/ 8' UTILITY BODY</b> #65312, 9200 LBS GVW Vortec 6000 V8, Auto, Air Cond, Locking Differential, Reading 8' Utility Body w/Ladder Rack SALE PRICE <b>\$23,900</b> PRICE INCLUDES \$3000 REBATE &amp; \$600 UPFIT ALLOWANCE</p>	<p>CHOOSE 0% FOR UP TO 5 YEARS OR REBATE</p> <p><b>2003 GMC 3500HD w/ 9' UTILITY BODY</b> #65382, 11,400 Lb GVW, Dual Rear Whls, Vortec 6000 V8, Auto, Air Cond, Locking Differential, Reading 9' Utility Body SALE PRICE <b>\$25,900</b> PRICE INCLUDES \$3000 REBATE &amp; \$600 UPFIT ALLOWANCE</p>	<p>CHOOSE 0% FOR UP TO 5 YEARS OR REBATE</p> <p><b>'03 GMC SAVANA w/BINS-DOORS-BOTH SIDES</b> #64768, G3500 1-TON, 9600 Lbs GVW, LH and RH SWING-OUT SIDE CARGO DOORS, Vortec 6000 V8, Auto, Air Cond, Adnan Steel Bin Pkg! SALE PRICE <b>\$20,993</b> PRICE INCLUDES \$3000 REBATE &amp; FREE BIN PKG</p>
<p>CHOOSE 0% FOR UP TO 5 YEARS OR REBATE</p> <p><b>2003 GMC SAVANA "PRO" G3500 1 TON</b> #65124, 9600 Lbs GVW, Vortec 6000 V8, Auto Air Cond Locking Diff Tilt Whl/Cruise, Chrome Appearance Pkg Savana "PRO" Pkg Incl 3 Side Access Panels w/ Remote Release Entry Adnan Steel Bin Pkg at NIC SALE PRICE <b>\$23,900</b> PRICE INCLUDES \$3000 REBATE &amp; FREE BIN PKG.</p>	<p>CHOOSE 0% FOR UP TO 5 YEARS OR REBATE</p> <p><b>2003 GMC SAVANA w/ 10' SERVICE BODY</b> #65274, G3500 1-TON, 9600 Lbs GVW, Vortec 6000 V8, Auto, Air Cond, Supreme Spartan 10' Body w/ Side Compartments, Translucent Roof, Step Bumper SALE PRICE <b>\$24,900</b> PRICE INCLUDES \$3000 REBATE &amp; \$900 UPFIT ALLOWANCE</p>	<p>CHOOSE 0% FOR UP TO 5 YEARS OR REBATE</p> <p><b>2003 GMC SAVANA 10' HIGH CUBE VAN</b> #65283, G3500 1-TON, 9600 Lbs GVW Vortec 6000 V8 Auto Air Cond Supreme 10' Van Body w/ Roll-Up Rear Door, Plywood Lining R Step Bumper SALE PRICE <b>\$22,500</b> PRICE INCLUDES \$3000 REBATE &amp; \$900 UPFIT ALLOWANCE</p>	<p>CHOOSE 0% FOR UP TO 5 YEARS OR REBATE</p> <p><b>2003 GMC SAVANA w/ 14' VAN BODY</b> #65381, G3500 1-TON 12 000 Lbs GVW Vortec 6000 V8, Auto A/C Supreme 14' High Cube Van w/ Roll Up Rear Door Translucent Roof Panels Rear Step Bpr, More! SALE PRICE <b>\$23,800</b> PRICE INCLUDES \$3000 REBATE &amp; \$900 UPFIT ALLOWANCE</p>
<p>CHOOSE 0% FOR UP TO 5 YEARS OR REBATE</p> <p><b>2002 LEFTOVER w/ 12' VAN</b> #02CON G3500 1 Ton 12 000 Lbs GVW Vortec 5700 V8 Auto Air Cond 12' Supreme Spartan Van Body w/ Roll-Up Rear Door &amp; Roof Farnig SPECIAL SALE PRICE! <b>\$22,900</b></p>	<p>CHOOSE 0% FOR UP TO 5 YEARS OR REBATE</p> <p><b>10' RUGBY DUMP!</b> • 1-877-665-9369</p>	<p>CHOOSE 0% FOR UP TO 5 YEARS OR REBATE</p> <p><b>2003 GMC C4500 DUMP</b> #64249 16 000 Lbs GVW 300 HP Duramax Diesel Allison Automatic Air Cond 10' Rugby Dump Body w/Tarp, Tailgate Chute, Trailer Hitch &amp; Tool Box SALE PRICE <b>\$35,972</b> PRICE INCLUDES \$3000 REBATE &amp; \$1000 UPFIT ALLOWANCE</p>	<p><b>TRY BERGEY'S... "TRUCK SPECIALISTS SINCE 1924!"</b></p> <p><small>PRIOR DEALS EXCLUDED ALL PRICES INCLUDE FREIGHT, DEALER PREP, ANY APPLICABLE FACTORY REBATES &amp; FACTORY EQUIPMENT DISCOUNT PACKAGE (IF APPLICABLE), ANY COUPONS &amp; BERGEY DISCOUNT TAX, LICENSE &amp; DOCUMENT FEES COST EXTRA VEHICLES SHOWN FOR ILLUSTRATION PURPOSES ONLY NOT RESPONSIBLE FOR TYPOGRAPHICAL ERRORS PLEASE PRESENT AD FOR ADVERTISED PRICES PRIOR TO PURCHASE ©BERGEY'S INC</small></p>