



• **1997 Freightliner, Series 60 Detroit 435-470 HP,** 10 Speed Road Ranger, Air Ride, 437,000 Miles, **\$29,500 OBO**

• **Also, 1994 Utility Reefer 48'x96",** Air Ride Spread, \$6,500 Spent on Carrier Unit, New Compressor, Drive Coupling, Belts, Oil Changes, Less Than 100 Hours Ago, **\$16,500 OBO.... Will Split Up.**

Pichel's Farm Market, 3131 Linden St., Bethlehem, PA 18017 • (610) 867-8610



89 Ford Tri Axle Dump, 400 H.P. Cummins, 8 Spd. LL trans. 18' Steel Dump, 46,000 Rears, 18,000 FA, AC, Dual 6" Exhaust, Nice Shape. **Asking \$22,900**



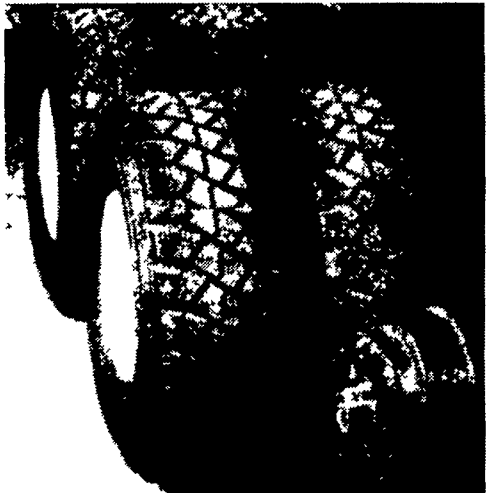
96 Mac Frameless Alum. Dump Tri, 40'x102"x72" Alum. Wheels, 24.5 Tires, Extra Light Sealed 2-Way Gate, Coal Chute, Air Ride Susp., Individual Dump Valves, Extra Lights and Vibrator **Asking \$24,900**

CALL: 717-361-0145

Call Binkley & Hurst Bros. Inc. And Ask For Allen If You Need Flotation

Introducing The New DURA-FLOAT WHEEL SYSTEM

Specializing in high flotation wheel systems for liquid or dry fertilizer application.



Dura-Float wheel systems:

- ✓ Fit on any 20" spoke hub.
- ✓ Use standard tire sizes.
 - ✓ 425 / 65 / R225
 - ✓ 445 / 65 / R225
- ✓ Utilize heavy rims for increased durability.
- ✓ Thick 5/8" steel mounting shields for added strength.
- ✓ Practical truck width while maintaining high flotation.
 - ✓ Inner tire mounts close to truck frame.
 - ✓ Decreased inner and outer tire gap.
- ✓ No speed restrictions — no heat build-up.
- ✓ Greatly increased tire life.
- ✓ Factory direct shipping.

BINKLEY-HURST BROS. INC.
 133 Rothsville Station Rd.
 P.O. Box 0395, Lititz, PA 17543-0395
 (717) 626-4705 1-800-414-4705 Fax (717) 626-0996

USED TRUCKS



1997 DODGE RAM 2500 CLUB CAB 4X4 SLT LARAMIE, Cummins Turbo Diesel, 5-Spd., A/C, Most Options, 8 Ft Bed, 94K Miles, Met Green & Silver **\$18,900**



1999 FORD F250 QUAD CAB 4x4 XLT, Powerstroke Diesel, AT, A/C, Most Options, 129K Miles, Silver **\$19,900**

2001 DODGE DAKOTA CREW CAB SLT, V6, AT, A/C, Most Options, 83K Miles, Maroon **\$13,500**

2000 CHEV 1500 4x4, 8 Ft. Bed, AT, A/C, C, 38K Miles, Black **\$13,900**

1998 DODGE RAM 2500, SLT/Laramie, 4x4, Quad Cab, Cummins Turbo Diesel, AT, A/C, Most Options, 8 Ft. Steel Flatbed w/Header, 68K Miles, White **\$19,900**

1998 DODGE RAM 2500 4x4, Club Cab, 12 Valve Diesel, AT, A/C, C, 93K Miles, Red **\$17,900**

1998 FORD E350 MAXI-VAN, Powerstroke Diesel, AT, Dual A/C, XL Trim, PS, PB, 16K Miles, White **\$15,500**

1996 DODGE 2500 SLT 4x4, Cummins Turbo Diesel, 5-Spd., A/C, Most Options, 410 Rear, 54K Miles, Green **\$15,900**

1995 FORD F150 XL, 5-Spd., 2WD, 6 Cyl., 135K Miles, Red **\$3,500**

1994 OLDSMOBILE 88 4 Door Sedan, AT, A/C, Most Options, Leather, Traction Control, 70K Miles, Black **\$5,500**

SCHAEFFERTOWN AUTO & TRUCK SALES
 RT. 501, 1-1/2 miles South of Schaefferstown
 717-949-2812



KENWORTH OF PENNSYLVANIA

Used Trucks Sales - Carlisle - 800-692-7324

"WE BUY USED TRUCKS" (717) 766-8000



1987 Ford Tri-Axle 17' Alum. Dump w/11' Valk Snowplow & Spreader, 315 Cummins, C-Brake, 8LL Trans, Hendrickson Susp. **\$19,900**



1997 KW W900L 74" Studio, 525 Cummins, Jake, 13 Speed, Very Clean **\$34,900**



Used Thermo Kings

Super II 30 MAX Factory Reman Engine and Compressor, 2 yr. warranty **\$9,500**

MD I 30 Running and Cooling **\$2,500**

MD II 30 R134a 300 hrs Running and Cooling **\$7,500**



New 2003 KW T800B 62" Aerocab Flat-top, 435/500 Cat, Jake, FRO-10 Speed, Air-ride Cab & Slpr.

Bergey's Dodge WORK TRUCK SALE!

Over 10 Cummins Diesels In Stock:



All new Dodge trucks come with 7-year or 70,000 mile powertrain warranty in addition to 3-year or 36,000 mile bumper to bumper factory warranty! Cummins diesel engines come with 100,000 mile warranty!



2003 DODGE SPRINTER VANS

THEY ARE HERE!

TONS OF ROOM! Diesel, Automatic Call for info & availability Feature higher payloads, best fuel economy in class, low maintenance costs, lots of storage space for tools, etc!

CALL US FOR MORE INFO!

2003 DODGE RAM 2500 QUAD CAB 4X4

HEMI V8 POWER! Stk# D5701, 5.7L Hemi V8, Auto, A/C, AM/FM St CD Player, Anti-Spin Differential, Snow Plow Prep & Tow Packages, And Much More! Only 5,300 Miles!

SALE PRICE! \$26,900

5.7L HEMI V8!

2003 DODGE RAM 1500 CARGO VAN

15 VANS IN STOCK!

SAVE \$5,352 Stk# L3836, 3.9L V6, Auto, A/C, Cassette Side & Rear Door Glass, Cloth Seats, More! Sale Price Includes Bergey's Discount & Rebate MSRP \$21,195

SALE PRICE! \$15,843

2003 DODGE RAM 3500 QUAD CAB 4X4

SAVE \$5,210! Stk# L3681, 5.9L Cummins HO Diesel, 6-Spd, SLT, PW, PL, PS, PM, Anti-Spin Diff, A/C, Cass & CD, Fog Lamps, Tow Package, Dualie, And Much More! MSRP \$42,075

SALE PRICE! \$36,865

DUAL REAR WHLS

2003 DODGE RAM 2500 PICKUP 4X4

OVER 10 DIESELS IN STOCK!

SAVE \$4,057! Stk# L3708, 5.9L Cummins Diesel, Auto, A/C, Anti-Spin Diff, Snow Plow Prep & Tow Pkgs Cassette Cloth! Price Includes Bergey's Discount & Rebate MSRP \$33,345

SALE PRICE! \$29,288

1999 FORD F-250 SUPER-DUTY 4X4

POWERSTROKE DIESEL! Stk# D5682, 7.3L Powerstroke Diesel, Auto, Supercab XLT, A/C, PW, PL, PM, St Cassette, 8 Bed, Tow Package, Bedliner, Running Boards, Bug Deflector, And Much More! 42,000 Miles

SALE PRICE! \$24,995

7.3L DIESEL POWER

ALL PRICES INCLUDE FREIGHT DEALER PREP ANY APPLICABLE FACTORY REBATE'S & FACTORY EQUIPMENT DISCOUNT PACKAGES (IF APPLICABLE). COUPONS AND BERGEY'S DISCOUNT TAX LICENSE & DOCUMENT FEES COST EXTRA SEE BERGEY'S FOR COPY OF LIMITED POWERTRAIN WARRANTY. PRIOR DEALS EXCLUDED VEHICLES SHOWN FOR ILLUSTRATION PURPOSES ONLY. NOT RESPONSIBLE FOR TYPOGRAPHICAL ERRORS. SEE BERGEY'S FOR DETAILS.

HURRY, LIMITED TIME OFFER!

Bergey's AUTOMOTIVE EXCELLENCE SINCE 1924

FIVE STAR BUSINESSLINK

www.bergeys.com
 dodgemail@bergeys.com

1201 N. BROAD ST. LANSDALE, PA 19446
 Ask For Carl or Jim When You Call!

CALL US TOLL FREE 1-888-709-9803

HOURS: M-F (9A - 9P) SAT (9A - 4P)
 Just off Fort Washington Exit 26 of PA Turnpike (I-276) Follow Rt 309 North to Colmar Turn left at traffic light onto N Broad St Yum-Yum Bakery and Bergey's Used Cars & Trucks located on corners at traffic light