

35 TRUCKS AND TRAILERS

WANTED 16 ft steel dump bed. 717-665-5373.

Flotation manure truck, 1985 KW w/Diller 3600 gal tank, AC, specked heavy, e.x. 540-833-6385, 540-810-4560

1999 F550 dsl, 4x4, 6 spd, AC, 67,500 miles, 9ft flat bed, excellent, asking \$23,500. 814-398-8451

86 Int. 1600S 7.3L diesel, 14' steel floor dump bed & hoist, new tires, new inspection, lots of new parts, needs engine work. Best offer. 717/899-6628

1985 GMC 7000 series, 366, 5+2 spd, 19ft alum grain body, \$8500 obo. Will sell grain body separate. 1981 Ford F350, 6 cyl, 4 spd, 8ft flat bed, \$1500 obo. 410-692-2553

78 GMC 6000 SA 13' flat-bed dump, 350 V8 gas, 4+2, rough, \$1600 OBO. 410/692-5105

88 F600 370 gas, 5plus 2, 9ft flat bed, goose neck & reese hitch, 24,000mi, Ex cond, \$7,900/obo. 410-592-6516

99 Merrit cattle pot, 50ft x 102", air ride, alum wheels, Ex cond, 717-359-9355

2 outside Alcoa alum wheels for steering axle; 2 inside & outside wheels, all 11-24-5; 2 Budd wheel steering axle hubs & hub-caps; 2 10-hole SS rear hats; set cab air lines; rear truck SS light box; 2 steps for any truck. 717/933-4038

1974 Int. single axle dump truck w/11' snow plow, 28,040 gvw, gas eng, 10-sp trans, \$4500 OBO. 717/896-8918

1995 Dodge diesel 5-spd, new injectors, w/cap, \$14,500 firm. 717-367-2623

1966 International 4x4 dump truck, G cond, many new replacements done, \$3,500/obo. 717-294-3587

Stock trailer for sale, bumper pull. Lv message, 410-838-1282.

1978 Budd walking floor trailer, 45x96 roll tarp, air ride, good cond. Call 717-535-5711.

Dodge 2001, new, 3500 diesel, club cab SLT, heavy towing pkg, dual wheels, bed liner, hard fold-up cover, heavy duty winch 3/8 cable mounted front frame, elec. trailer brake, 6-spd, 4WD, only 7500 miles. 856-785-2579

'92 Peterbilt 425 Cat, 13 spd, 48" flat, 238" WB, \$19,500. 717-484-4136

Volvo single axle tractor, 671TA, DD 10 speed, good brakes & tires, 410,000 mi, \$2000. Truck conveyor base pivots, up/down, used for small crane, etc. \$500. Call 717-292-9794

'79 GMC refrigerator truck, 10ft body, GVW 10,000#, box in v.g. cond, \$1800 obo. 717-733-8921

Marysville body on 3/4 ton Chev chassis, no eng, \$450. 215-886-5000.

1995 IH 9400 series, tri-axle dump, road ready. \$25,000. 717-292-4615

97 cf 7000 chassis & cab, 26,000 gvw, ca 196, 6 spd trans, air brakes, air ride, a/c, radio, 68,000 mi, \$16,500. 215-533-1234

LEED TRUCK CENTER
402 South Chiques Rd. Salunga Exit, Route 283 **717-898-1200**



1996 FORD E-350, 15 Pass Window Van, 5.8 Liter, A/T, P/S, P/L, P/W, A/C Front & Rear, Only 28,000 Mi., Insp Very Clean

Priced To Sell



1989 FORD F-800, 7.8 Liter Turbo Diesel, 5 & 2 Spd., P/S, A/B, 33,000 GVW, 18' Platform Body, New Insp, Clean

ONLY \$4,900⁰⁰



1986 PETERBILT CONV., Cummins Turbo diesel, P/S, 9 Spd., A/C, A/B, 50,000 GVW, 22' Stair Platform Body with (4) 550 Gal Snyder Tanks, Plus Hose & Meter System, Air Ride Susp

Priced To Sell

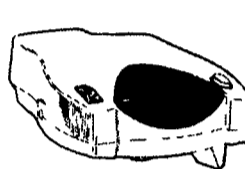
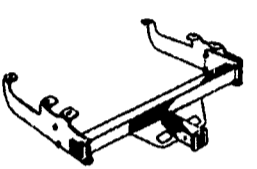


1984 VOLVO WG, 250 Hp, Turbo Diesel, 8 Spd., P/S, A/B, A/C, 22' Platform Dump & Hi-Lift, 56,000 GVW, Low Miles, New Insp Very Clean

Call For Details

Weaver Distributing Warehouse Direct To Your Door!

Trailer Hitches Class 1 thru 5 \$49 - \$125



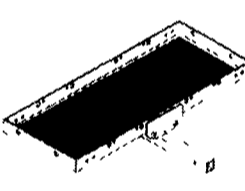
Pintle Hooks and Accessories



Triple Tow Mounts Black or Chrome balls



Cargo Carriers \$56-\$95



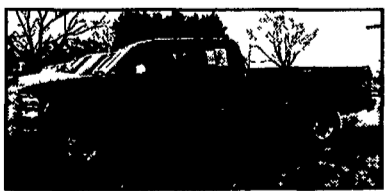
Quic Goose Gooseneck Hitch \$299



Adjustable Ballmounts \$39.95 & up



Free shipping for most orders
Call For a Free Catalog 1-800-932-8373
1-800-WEAVER-D
Weaver Distributing
125 Blue Mountain Road
Fredericksburg PA 17026



2001 Chev. 2500 HD, LS
Ext. Cab, 4x4, Longbed, 6.0 Vortec Eng., AT, AC, Pwds., Pdis., Cruise, Tilt, CD, 4 Drs., 9200 GVW, 4.10 Rear, Clean Truck, 55,000 Miles, Grey
\$21,900



1997 Ford F-250 XLT Super Cab 4x4
7.3 Powerstroke Diesel, 5 Sp., A/C, PW, PDL, Cruise, Tilt, CD, Longbed, 8,800 GVW, 3.55 Ltd. Slip Rear Very Clean Truck. 143,000 Mi., Maroon
\$16,500

MARTIN'S AUTO SALES
1025 W. Main St., New Holland, PA 17557
(717) 656-6621

35 TRUCKS AND TRAILERS

7511 Allentown Blvd. Harrisburg, PA 17112 **717-652-1925**
FAX 717-652-4888
www.autotrader.com/view/affordable car and truck

AFFORDABLE CARS AND TRUCKS, INC.
"You Gotta Believe!"
New Exit #72A, Rt. 81 N; Rt. 22 East of Harrisburg; 3 Miles North of Hershey Park

75 TRUCKS IN STOCK

93 FORD F250 XLT 4x4 EXT CAB
Longbed, 7.3 Internal Turbo DSL, 5-Sp., AC, PW, PDL, Tilt, Cruise, Real Clean & Straight Truck. 100,000 Mi.
\$9,995

96 FORD F250 XLT 4x4
H D Ext Cab Longbed, 7.3 Powerstroke with 5-Speed, AC, PW, PDL, Cruise & Tilt Only 88K Very Rare Truck in Prime Condition, Farmers & Pullers This is What You've Been Waiting For!
\$15,995

93 CHEV 2500 SILVERADO SUBURBAN
4x4 350V8, 3/4 Ton, AT, AC, Dual AC + Heater, 3rd Seat, Tailgate 8600 GVW with Tow Package. Rebuilt Trans with 3 Year Warranty 106K, Clean vehicle
\$8,995

98 DODGE RAM ST 2500 4x4
Cummins Turbo DSL, 5 Sp., AC, Cloth Seat, Nice, Clean Truck. 100,000 Mi Rare 5-Speed, Guys!! 104K
\$16,995

96 FORD F250 XL 4x4
7.3 Powerstroke DSL 8600 GVW, 5 Speed, Air, Real Nice Truck, I'd Say Even Showroom Condition, 100,000 Mi.
\$12,995

96 DODGE RAM 1500 LARAMIE SLT 4x4
V8, Gas, Ext Shortbox, AT, AC, PW, PDL, Tilt, Cruise, Real Sharp Truck 100,000 Mi.
\$8,995

99 FORD F250 XLT 4x4 SUPER DUTY QUAD CAB
Longbed 7.3 Powerstroke, AT, AC, PW, PDL, Side Steps + Rhino Liner Mint Showroom Condition, 112K
\$19,500

89 FORD F250 XLT 4x4 EXT.
Longbed, 5-Speed, 7.3 International DSL, Nice Clean Truck, 80,000 Miles You Will Really Like This Old Trade In!
\$7,495

97 FORD F250 XLT 4x4
7.3 Powerstroke DSL, AT, AC, PW, PDL, Tilt, Cruise, Nice Straight Truck, 120K
\$13,995

96 FORD F250 XLT 4x4 H.D.
8600 GVW, 460 V8, AT, AC, PW, Pdl, Cruise, Tilt, All Black & Sharp, Like New Cond! 100,000 mi
\$8,995

95 FORD F350 XLT
Crew Cab, Longbed, H D 7.3 Powerstroke Dsl., AT, AC, PW, PDL, Cruise, Tilt, & More Fully Dealer Maintained + Like New Throughout! 170K
\$13,995

95 FORD F350 XLT
4x4 1-Ton DSL 7.3 Powerstroke, AT, AC, PW, PDL, Tilt Cruise Plus More, Dk Green Color, 140K
\$11,995

96 DODGE RAM 2500 4x4 SLT LARAMIE EXT.
Longbed, Cummins Turbo Dsl., 5-Sp, AC, PW, PDL, Cruise, Tilt, + More. 200K All Dealer Maintained + Super Tight Condition; Looks New As Well!!!
\$13,995

97 FORD F150 4x4 LARIAT EXT CAB
Longbed, 3rd Door, 5.4 Triton V8, AT, AC, PW, PDL, Cruise, Tilt, Stereo, + Leather Extra Nice Truck 100,000 Mi
\$10,995

95 FORD F250 XLT 4x4
Longbed, 5.8 V8 351, 5 Sp., 8800 GVW, Only 90K, AC, PW, PDL, Cruise + Tilt, Showroom Looking Condition
\$10,995

96 FORD F250 XLT 4x4 EXT.
Longbed, 7.3 Powerstroke Dsl., AT, AC, PW, PDL, Tilt, Cruise & More, Black/Silver, Nice, Clean Well Kept Tk., 160K
\$11,995

88 CHEV S10 4x4 Ext CAB
2.8 V6, AT, AC and Fully Loaded, Nice Clean Truck and Good Running As Well 100,000 Miles, PA Inspected and Ready To Work Today
SPECIAL \$1,595

01 FORD F350 XLT
4x4, Super Duty, Quad Cab, Longbed, Only 50,000 mi., All Black, 7.3 Powerstroke DSL, Plus Its 6-Speed. This Like New Beauty HAS IT ALL!! Original Cost \$38,000 My Price On This Showpiece Firm **\$24,999**

96 DODGE RAM 2500 4x4 SLT LARAMIE EXT.
Longbed, Cummins Turbo DSL, 5-Sp., AC, PW, PDL, Tilt, Cruise, + More Low Miles, Only 90,000 Showroom Condition
\$17,995

99 DODGE RAM 3500 4x4 LARAMIE SLT QUAD CAB.
Longbed Cummins Turbo Dsl 5-Spd, AC, PW, PDL, Cruise, Tilt, P Seat, Stereo and More 140k All Black and Showroom Condition Well Cared For PA 1-Owner
Firm \$19,995

97 FORD F250 XLT 4x4 EXT LONGBED
7.3 Powerstroke DSL, AT, AC, PW, PDL, Tilt, Cruise, All 100% Black and Super Clean 100,000 Mi 1-owner!
\$15,995

95 FORD F250 XLT 4x4 EXT CAB
Longbed, Dually, 7.3 Powerstroke DSL, 5-Speed, AC, + All Power Options Nice Clean Truck, Ready to Pull Your Trailer! 150K
\$11,995

98 FORD F350 SUPREME
18' Box Truck 11,500 GVW's, Rollup Door, Plank, New Tires, Brakes, & Insp., AT, AC, Stereo, 5.4 Triton, 100,000 Mi., Superb, Sharp We Used Truck All Year!
\$8,999

Disclaimer Mileage listed for your convenience only, it is approximate, not to be relied on as exact Sorry for any inconvenience