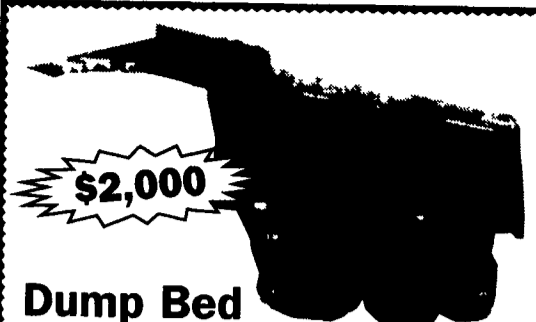
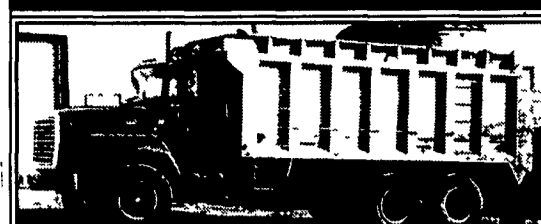


1993 Dorsey Walking Floor Trailer
\$20,000 Make Offer! 717-438-3354



\$2,000
Dump Bed
Air Tailgate with Cylinder
8' wide x 17'6" long x 4' deep
717/432-8403



1973 Ford F-9000 19 ft.
Alum. Bed, 290 Cummins
\$7,900
717-423-6188

35 TRUCKS AND TRAILERS

'89 24ft Freightliner roll back, 3406V Cat motor, 5t inspected, low mileage, good truck, \$18,000 obo. '89 Int Eagle tractor, 60" bunk, rebuilt motor, v.g cond, \$12,000 obo. 717-529-2529

Ford 87 F150 4x4, best offer. 717/336-4643

'90 LN9000 Ford dump truck, 300 Cat, 9 spd, pintle, A/C, custom cab, 35,000GVW, \$12,000. 717-862-3019.



1988 Mack 350, 9 speed air ride cab, 2 air seats, Jake brakes, lifter axle, 18' bed, 18 ton hoist, 4' alum. sides and tailgate.
(717) 445-6203



1991 White GMC 60 Series
60 Series Detroit 11.1, 9 spd., Fuller trans., 32,900 GVW, 3 yr. old Scott bed w/fold down sides, 25,937 original miles, w/1996 Kodiak trailer, 20,000 GVW, 22' deck, air over hyd. brakes.
\$20,500 will separate*
610/589-5555



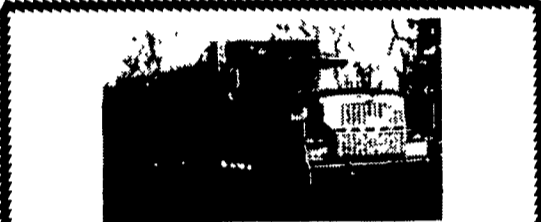
1999 Dodge 3500 Dually
Quad Cab 4x4, SLT Package, Cummins Turbo Diesel, 5 Speed, Bedliner, Good Cond., 92K, \$18,900
814-329-2795

BRENNER *Only At Your BIG Dodge Dealer!*

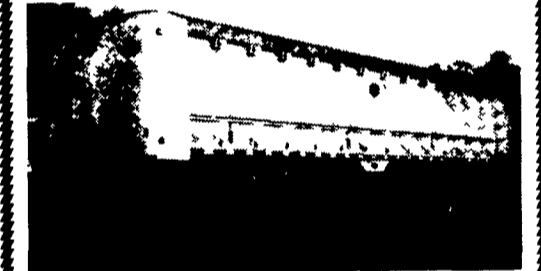
BUSINESSLINK | FIND THE VEHICLE THAT BEST FITS YOUR BUSINESS'S NEEDS!
Contact Our Business Link Account Manager, George Adams..

1998 GMC 1500 X-CAB 4X2	2001 DODGE DAKOTA 4X4	2002 DODGE RAM VANS	PRE-OWNED TRUCKS & SUVs
 #5294, Auto, Air, Only 43k Miles! \$12,995	 #5356P, Auto, Air, Only 23k Miles! \$13,995	 3 Are 2002 Leftovers, All With Air! 1500's, 2500's, 3500's & Maxi's! Starting At \$16,765	2000 OLDSMOBILE BRAVADA #5488 Only 63k Miles! \$10,995 1998 TOYOTA TACOMA #5313P, X-Cab, Auto, Air, Only 51k Miles! \$12,595 1999 FORD F-150 4X4 #5502, Auto, Air, X-Cab, Only 64k Miles! \$12,995 1998 DODGE DURANGO #3336P, 7 Pass, Auto, Air, Only 53k Miles! \$13,995 2000 FORD EXPLORER 2 Available One Is A XLS & The Other A XLT! \$13,995 1999 HONDA CRV #5308P, Auto, Air, Only 28k Miles! \$13,995 2001 NISSAN FORRESTER #5289 Only 28k Miles! \$15,995 2000 NISSAN PATHFINDER #5270P Only 35k Miles! \$16,995 2002 TOYOTA RAV 4 #5303, Like New! Only 5k Miles! \$17,995
2000 DODGE RAM 1500 X-CAB 4X4 #5447P, Auto, Air, Only 44k Miles! \$18,995	2001 DODGE RAM 2500 X-CAB 4X4 #5409X, Auto, Air, Only 36k Miles! \$19,995	2001 DODGE RAM 2500 QUAD 4X4 #5115 Auto, Diesel & More! \$26,995	

1812 PAXTON STREET · HARRISBURG PA / www.brennermotors.com / 800-445-2222
Tax & tags extra Prices/incentives expire one week from publication. See dealer for more details



89 Ford Tri Axle Dump, 400 H.P. Cummins, 8 Spd. LL trans. 18' Steel Dump, 46,000 Rears, 18,000 FA, AC, Dual 6" Exhaust, Nice Shape. Asking \$22,900



96 Mac Frameless Alum. Dump Tri, 40'x102"x72" Alum. Wheels, 24.5 Tires, Extra Light Sealed 2-Way Gate, Coal Chute, Air Ride Susp., Individual Dump Valves, Extra Lights and Vibrator Asking \$24,900
CALL: 717-361-0145

1991 INTERNATIONAL VAN, 20' Box with Lift Gate, DT466 - 5&2 Transmission, GVW 25,000 under CDL, Excellent Condition, Air Brakes **\$12,500**

1988 GMC TANKER, Aluminum Tank 3 Compartment, 2500 Gallons, Pump, Meter, Hose Reel, Nozzle, Ready to Run, Cat 3208 Diesel **\$14,500**

1987 INTERNATIONAL VAN TANKER, 24' Van Body with two 500 Gallon Tanks, Pump, Meter, Hose Reel, PTO Driven, Can Be Used for Diesel or Lube Oils, DT 466 Engine, 5&2 Transmission, Lift Gate, Great Lube Truck, 33,000 GVW **\$9,500**

1989 INTERNATIONAL VAN, DT 466 Engine, Lift Gate, 5&2 Transmission, 28,000 GVW, Disc Brakes **\$8,500**

STORAGE TRAILERS:
(2) - 35 Foot Single Axle, Roll Up Doors . . \$650 Each
42 Foot Dual Axle **\$1,100**

EQUIPMENT FOR SALE:
(4) 3 Phase 1 1/2" Pumps (10) 2000 Gallon Tanks
(1) 3 Phase 3" Pump (2) 5000 Gallon Tanks
(1) Single Phase 1 1/2" Pump (30) 3" Brass Gate Valves

GREASE SALE
120 Lb EP #1 w/Moly **\$80**
Track Lube 400 lb Drum **\$150**
5" Wheel Lube Packs 50 Box **\$25**

LUBECO INC.
1266 SANS SOUCI PARKWAY
HANOVER TOWNSHIP, PA 18706
800-222-1838 — 570-824-5724

FLATBED BODIES

Lengths to 32', choice of 5 widths.

GRAIN BODIES

Lengths to 24', landscape and general purpose dumps to 12'

LANDSCAPE BODIES

Lengths to 12' We'll build to your specs!

Eby is the leading manufacturer of aluminum bodies and trailers for agri-transportation. Our products are designed for superior strength, reduced weight for greater payload capacity, minimum maintenance and higher resale value. In addition to premium standard features, we offer full custom options built to your specs.

EBY IN ALUMINUM BODIES **EBY BUILDS IT** Blue Ball, PA 800-292-4752

92 GMC 4x4 ext cab, sht bed super clean, new inspection, runs good

96 Dodge 4x4 ext cab, sht bed all the extras, 120k \$7900

(717) 838-9043 or 926-3645