

**BLACK BEAR TRUSS CORP.**

852 Upper Powys Road  
Conan Station, PA 17228  
www.BLACKBEARTRUSS.com  
"Our Trusses Bear Up"

**CRANE SET W/DELIVERY CALL FOR DETAILS**

ASK ABOUT OUR 1/2 PRICE CRANES  
PHONE: 570-998-2391  
FAX: 570-998-9875  
TOLL FREE 1-800-326-9689

**\$ WHOLESALE \$**

**1/2" to 8" PIPE 1/2" to 8"**  
Prime, secondary, structure pipe  
Farmers, Manufacturers, Fabrication  
— Will Cut To Your Size Needs —

**STEEL TUBING**  
1 1/2" Sq 3 1/2" Sq 2"x2" Sq. 2"x4" Rect  
2 1/2" Sq 4"x4" Sq 3"x3" Sq. 3"x2" Rect.  
20' to 24' Lengths 5/16" to 1/2" Thick

**BRICKER'S PIPE YARD**  
1970 Frank Road  
717-261-0095 Chambersburg, PA 17201

**Berks County Barn Builders**  
610-473-7118

Put your barn back in the work force with  
Siding, Roofing, Restoration, Repair  
Additions, Stabling, Conversions

Architectural Service Available  
**SERVING THE ENTIRE DELAWARE VALLEY**  
We are professional carpenters  
who can do your job right!

**BND BUILDERS LLC**  
Let Us Design Your Next  
Post-Frame Building!

**Specializing In Custom Built:**  
✓ Post-Frame Buildings  
✓ Commercial Agricultural  
and Equestrian Buildings  
✓ Residential Garages  
✓ Equipment Sheds

128 Mentzer Rd., New Holland, PA 17557  
Call: 717-278-4127  
Fax: 717-351-0586

**Timberline POLE BUILDINGS**

- Horse Barns & Arenas
- Mini Storage Buildings
- Machinery Storage • Garages
- Livestock Containment
- Commercial Buildings

Producers of Quality Buildings for over  
30 years  
Many sizes & options available

**Free Estimates**  
800/842-0276

**Country Slicker**

**Centurydrain™ roofing and siding from Wheeling Corrugating: slick looking, tough, economical.**

- High tensile galvanized steel for strength, durability.
- Drain channel and tight laps for snug, dry interiors.
- Wide selection of bright, baked-on contemporary colors.
- Slick looking, cost efficient, extra durable Centurydrain.

**MARTIN'S ROOFING & SIDING**  
258 Walnut Bottom Rd., Exit 29  
Shippensburg, PA 17257  
(717) 532-3460

**CALL THE SPOUTING SPECIALISTS**  
For

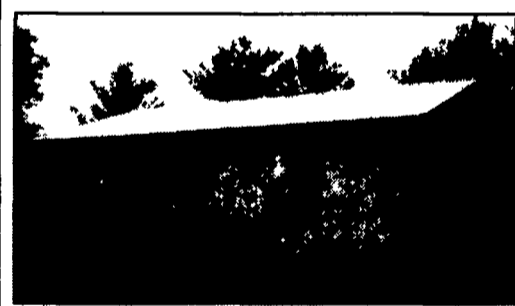
- 5", 6" & 7" Seamless Gutters in 32 Colors
- Half Round Gutters
- Gutter Protec™
- Windows & Doors • Tubular Skylights

**SENENIG'S SPOUTING**  
Call Today For A Free Estimate  
265 E. Meadow Valley Rd., Lititz, PA 17543  
717-733-7160 - 1-800-247-2107 - 717-627-6886  
Financing Available

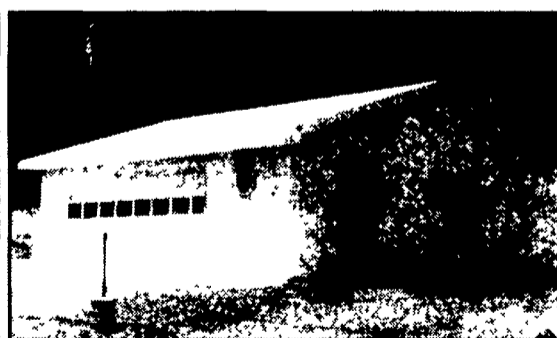
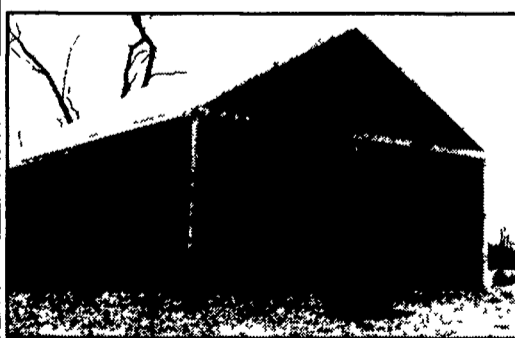
**Room Additions, Sun Rooms, Decks, Garages, Etc.**

**MILLWAY HOME IMPROVEMENTS LLC**  
Call Today For A Free Estimate  
265 E. Meadow Valley Rd., Lititz, PA 17543  
717-733-7160 - 1-800-247-2107 - 717-627-6886  
Financing Available

- 30x50x12  
• 2-10'w x 10'h garage doors  
• 1-3' entry door  
**\$13,250**
  - 40x60x12  
• 1-12'w x 12'h sliding door  
• 1-10'w x 10'h garage door  
• 1-3' entry door  
**\$16,500**
  - 40x80x12  
• 1-12' x 12'h sliding door  
• 1-10'w x 10'h garage door  
• 1-3' entry door  
**\$21,400**
  - 50x96x14  
• 1-14'w x 14'h sliding door  
• 1-12'w x 12'h garage door  
• 1-3' entry door  
**\$28,400**
- 40# per sq. ft. snow load on trusses
  - Financing Available
  - Call for free literature or see us at  
www.pioneerpolebuildings.com



- Stock Buildings**
- 24x24x8  
• 2-9'w x 7'h garage doors  
• 1-3' entry door  
**\$5,750**
  - 24x40x10  
• 2-9'w x 8'h garage doors  
• 1-3' entry door  
**\$8,400**
  - 30x32x10  
• 2-9'w x 8'h garage doors  
• 1-3' entry door  
**\$8,400**
  - 30x40x10  
• 2-9'w x 8'h garage doors  
• 1-3' entry door  
**\$9,250**
  - 30x64x10  
• 2-10'w x 10' sliding doors  
• 1-3' entry door  
**\$13,250**



**PPB, Inc.**  
Can We Build One For You!

Prices included tax, delivery materials, and labor for construction.

MEMBER  
**NEBA**  
NATIONAL EQUESTRIAN BUILDING ASSOCIATION

**PPB**

**Pioneer Pole Buildings, Inc.**  
716 South Rt. 183, Schuylkill Haven, PA 17972  
Toll Free 1-888-448-2505 Fax 1-888-448-2515  
www.pioneerpolebuildings.com

- 30 year warranty Everlast painted steel (your choice of color on roof, sides, trim).
- Steel is G 100 painted and heat roll formed by Everlast Inc., the best known roofing manufacturer.