

35

**TRUCKS
AND
TRAILERS**

7511 Allentown Blvd.
Harrisburg, PA 17112

**75 TRUCKS
IN STOCK**

**AFFORDABLE
CARS AND TRUCKS, INC.**

"You Gotta Believe!!"

New Exit #72A, Rt. 81 N; Rt. 22 East of Harrisburg; 3 Miles North of Hershey Park

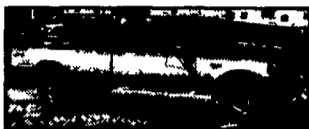
717-652-1925

FAX 717-652-4888

www.autotrader.com/view/
affordable car and truck

93 FORD F250 XLT 4x4 EXT CAB

Longbed, 7.3
Internal Turbo DSL,
5-Sp., AC, PW,
PDL, Tilt, Cruise,
Real Clean &
Straight Truck
100,000 Mi
\$9,995



96 FORD F250 XLT 4x4

H D Ext Cab Longbed, 7.3
Powerstroke with 5-Speed,
AC, PW, PDL, Cruise & Tilt
Only 88K Very Rare Truck
in Prime Condition Farmers
& Pullers This is What
You've Been Waiting For!



\$16,500



**96 FORD F250 XLT
4x4 EXT. CAB**

7.3 Powerstroke, DSL, Longbed, AT,
AC, PW, PDL, Tilt, Cruise,
Black/Silver. Only 60,000 Mi New
Condition.
\$16,995



**98 DODGE RAM ST
2500 4x4**

Cummins Turbo DSL, 5 Sp., AC, Cloth
Seat, Nice, Clean Truck 100,000 Mi.
Rare 5-Speed, Guys!! 104K
\$16,995



00 FORD EXCURSION LIMITED,
4x4, 7.3 Powerstroke dsl, 1-owner, 90,000
miles, 3rd seat, all highway, barn door, leather,
dual Heat & air + every other option, Black,
King of the SUV's + 24 MPG's
\$22,995



**96 DODGE RAM 1500
LARAMIE SLT 4x4,**

V8, Gas, Ext Shortbox, AT, AC, PW,
PDL, Tilt, Cruise, Real Sharp Truck
100,000 Mi.
\$8,995



**97 FORD F350 XLT 4x4 SUPER
DUTY CREW CAB LONGBED**

AT Powerstroke AC, PW, PDL, Cruise,
Real Nice Truck, 114K Must See!
\$17,500



89 FORD F250 XLT 4x4 EXT.,
Longbed, 5-Speed, 7.3 International
DSL, nice clean truck, 80,000 miles.
You will really like this old trade in!
\$7,495



97 FORD F250 XLT 4x4

7.3 Powerstroke DSL, AT, AC, PW,
PDL, Tilt, Cruise, Nice Straight
Truck, 120K
\$13,995



96 FORD F250 XLT 4x4 H.D.

8600 GVW, 460 V8, AT, AC, PW,
Pdl, Cruise, Tilt, All Black & Sharp,
Like New Cond! 100,000 mi
\$9,500



95 FORD F350 XLT 4x4

Crew Cab, Longbed, H.D.
7.3 Powerstroke Dsl., AT, AC, PW, PDL,
Cruise, Tilt, & More. Fully Dealer
Maintained + Like New Throughout! 170K
\$13,995



97 CHEV TAHOE LS 4x4,

Vortec 350, AT, AC, PW, Rear AC +
heat, CD, Delco, combo stereo,
100,000 Miles, Mint condition.
\$8,995



**96 DODGE RAM 2500 4x4
SLT LARAMIE EXT.**

Longbed, Cummins Turbo Dsl, 5-Sp.,
AC, PW, PDL, Cruise, Tilt, + More
200K All Dealer Maintained + Super
Tight Condition, Looks New As Well!!!
\$13,995



**97 FORD F150 4x4
LARIAT EXT CAB**

Longbed, 3rd Door, 5.4 Triton V8, AT,
AC, PW, PDL, Cruise, Tilt, Stereo, +
Leather. Extra Nice Truck. 100,000 Mi.
\$10,995



95 FORD F250 XLT 4x4

Longbed, 5.8 V8 351, 5 Sp, 8800
GVW, Only 90K, AC, PW, PDL,
Cruise + Tilt, Showroom
Looking Condition
\$10,995



96 FORD F250 XLT 4x4 EXT.

Longbed, 7.3 Powerstroke Dsl, AT,
AC, PW, PDL, Tilt, Cruise & More,
Black/Silver, Nice, Clean Well Kept
Tk, 160K
\$11,995



**95 FORD F250
XLT 4x4**

8600 GVW, 5.8 V8, GAS 351, AT, AC,
PW, PDL, Cruise & Tilt, Like New In
Every Way! 98K
\$8,995



01 FORD F350 XLT,

4x4, Super Duty, Quad Cab,
Longbed, only 50,000 mi, All Black,
7.3 Powerstroke DSL, plus its 6-
Speed. This like new beauty HAS IT
ALL!! Original Cost \$38,000 My
price on this Showpiece
Firm \$24,999



**96 DODGE RAM 2500 4x4
SLT LARAMIE EXT.**

Longbed, Cummins Turbo Dsl.,
5-Sp., AC, PW, PDL, Tilt, Cruise, +
More. Low Miles, Only 90,000.
Showroom Condition.
\$17,995



**99 DODGE RAM 3500 4x4
LARAMIE SLT QUAD CAB,**

Longbed, Cummins Turbo Dsl 5-Spd, AC,
PW, PDL, Cruise, Tilt, P Seat, Stereo and
more 140k All black and showroom condi-
tion Well cared for PA 1-owner.
Firm \$19,995



**01 FORD F-350 XLT 4x4
CREW CAB DUALY,**

Super Duty LongBed, 7.3 Powerstroke,
AT AC PW, PDL, Cruise, Tilt, Alloys,
Black Truck, Like New! 120K All
Highway, Fully Serviced
Firm \$22,995



**95 FORD F250 XLT 4x4
EXT CAB**

Longbed, Dually, 7.3 Powerstroke
DSL, 5-Speed, AC, + All Power
Options Nice clean Truck, Ready to
Pull Your Trailer! 150K
\$11,995



98 FORD F350 SUPREME

18' Box Truck 11,500 GVW's, Rollup
Door, Plank, New Tires, Brakes, &
Insp, AT, AC, Stereo, 5.4 Triton,
100,000 Mi, Superb, Sharp
We used truck all year! **\$8,999**

Disclaimer Mileage listed for your convenience only, it is approximate, not to be relied on as exact Sorry for any inconvenience

Deckover Trailer
102" x 20' w/Level Deck
\$3,995.00

Gooseneck Trailer
102" x 20' w/Level Deck
\$4,625.00

**Full Service Facility • State Inspection
Aluminum Welding & Fabrication**

*We stock a full line of trailer parts & accessories
Same day shipping on all in stock items
We now carry truck accessories too

LanChester Trailer Supply, LLC
3220 East Gordon Rd
Gordonville, PA
717-768-0663
www.lanchestertrailer.com
6 15 AM - 5 00 PM M-F
8 00 AM - 1 PM Sat

**A LESSON
WELL
LEARNED...
LANCASTER
FARMING'S
CLASSIFIED
ADS
GET RESULTS!**

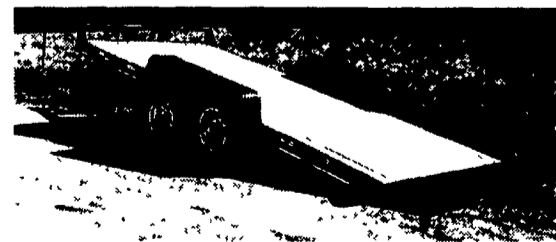
**6 Ton 14' Lo
Profile
Hydraulic
Dump
w/Ramps & Tie
Downs**

\$6,400



6 Ton 'AgriKing' Gooseneck
Available in Pintle Hitch

\$4,850



**5 Ton
Capacity
Tilt Bed**

\$4,650

KEYSTONE TRAILERS Inc.

• SALES • PARTS • SERVICE • HITCHES
1657 Rohrerstown Rd. • Lancaster, PA 17601
Phone 717-581-9020 • Fax 717-581-9055
www.keystonetrailers.com
Leasing & Financing Available
Mon.-Wed.-Fri. 8:00 a.m. to 6:00 p.m.
Tues.-Thurs. 8:00 a.m. to 5:00 p.m.
Sat. 8:00 a.m.-12:00 noon

**90 DAYS SAME AS
CASH AVAILABLE**

Motorcycle - ATV - Snowmobile
Utility - Landscape - Cargo
Car Haulers - Race Trailers
Hydraulic Dumps - Concession
Construction - Equipment Haulers
1500# to 12 Ton Capacity
8' to 48' Length
Replacement Parts - Accessories
Lighting - Wiring Hitches & Towing
Accessories - Brake Control - Ramps -
Tie Downs - Tool Boxes - Motorcycle
Carriers - Cargo Carriers - Wheels &
Tires - Bicycle Racks - Load Control
Straps & Equipment
On Site Tag, Title & Registration