

www.kbford.com

Your Internet Connection

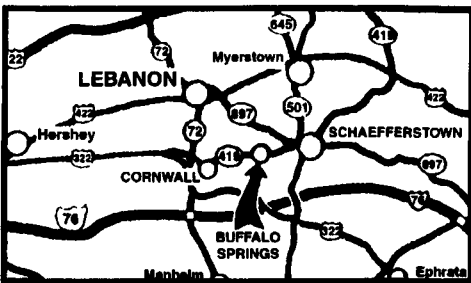
SPECIALIZING IN NEW & USED SUPER DUTY PICKUPS

KELLER BROS.

(Buffalo Springs) Lebanon, PA

717-949-2000 or 1-800-363-2767

LEBANON COUNTY'S HEAVY DUTY TRUCK HQTRS.



FAMILY OWNED AND OPERATED FOR OVER 80 YEARS

Over 100 Clean Pre-Owned Vehicles In Stock At All Times!!

2002 CHEV K2500 CREW CAB LT
4x4, Shortbed, 6.6 Turbo Diesel, Allison Trans., One Owner, Very Clean
\$35,995



2001 DODGE RAM 1500
Quad Cab, 4x4, SLT, V8, AT, A/C
\$23,995



2003 100 ANNIV. F150 SUPER CREW
Harley Davidson Edition 2 Tone Leather, 20" Rims, Super Charged



2002 CHEV. 2500 EXT. CAB LS 4x4
6L V8, AT, A/C, PW, PL, P. Seat, Only 12,000 Miles
\$29,595



2001 FORD SPORT TRAC
4x4 4.0 V6, AT, A/C, PW, PL, 48,000 Miles Alloy Wheels
\$19,900



2001 FORD RANGER
Super Cab XLT 4x4 V6, AT, Flare Side
\$16,995



2001 FORD ESCAPE
4x4, V6, AT, A/C, PW, PL Moonroof
\$17,595



2002 CHEV. EXPRESS VAN LT
5.7 V8, AT, A/C, Quad Capt. Seats, DVD, Leather Spring Special
\$20,995



1998 MAZDA B3000
V6, 5-Spd., A/C, 4x4, Very Clean
\$9,895



2003 FORD F350 CREW CAB
V10, AT, Full Power, 4x4 Cab & Chassis Only.
"SAVE THOUSANDS"



1998 FORD EXPEDITION 4X4 EDDIE BAUER
V8, A/C, Full Power
\$15,795



1995 CHEV S10 BLAZER
4x4, 4 Door, 4.3 Vortex V6, AT, A/C, PW, PL, 68,000 Miles
\$8,995



1995 DODGE RAM 1500 SLT 4x4
V8, AT, A/C
Only **\$9,595**



2001 FORD F150 SUPER CREW KING RANCH EDITION
Local Trade 1 Owner
\$23,665



1997 FORD F150 SUPER CAB 4X4 XLT
4.6 V8, AT, A/C, PW, PL
\$15,534



2000 FORD F150 Reg. Cab, 4x4
4.6 V8, XLT, AT, PW, PL, 1-Owner
\$16,996



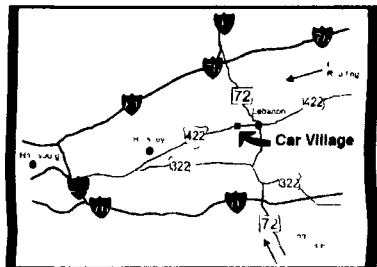
Nicest Trucks In the East • Nicest Trucks In the East • Nicest Trucks In the East • Nicest Trucks In the East • Nicest Trucks In the East • Nicest Trucks In the East

Business Hours:
Mon.-Fri. 9 to 9:
Sat. 9-4

2300 W. CUMBERLAND ST. (Rt. 422)
LEBANON, PA 17042
(Across From Lebanon Valley Mall)

CAR VILLAGE

1-800-650-1420
717-274-2000



HEAVY CHEVY • 2000 CHEVY K3500 CREW DUALY, 4 WHEEL DRIVE
Hey Chevy Guys. This is The One. Only 28,000 Miles High Output, 6.5 Turbo Diesel, Auto, All Power Options, Swing Out Mirrors & More



6 WHEEL DRIVE 1999 FORD F350 SUPER CAB DUALY
Very Strong, Powerstroke Turbo, 6 Sp Trans, Loaded XLT, Tow Pkg, Alloy Wheels, A Real Good Looker



\$10,900 97 DODGE 2500 4X4
Fuel Inj. 360 V8 Auto., A/C, Heavy Duty 3/4 Ton Cloth Seat, Vinyl Floor, Alloy Wheels. Very Solid Truck.



\$14,900 95 FORD F-250 SUPER CAB 4X4
Very Clean Loaded XLT, 40/20/40 Seat Powerstroke Turbo Diesel, Auto, A/C, Alloy Wheels



WHY BUY NEW SAVE \$\$\$ 2003 Dodge Ram 3500 HD
Like New Only 5,700 Miles, 24 Valve Cummins Turbo Diesel, Auto, A/C, Power Drive, CD Player, List \$40,400 **\$34,900**



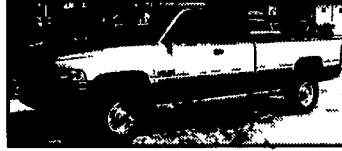
\$19,900 2001 DODGE 2500 4x4. Heavy Duty 3/4 Ton, 24 Valve Cummins Turbo Diesel, Auto, A/C, Tow Package, New Insp, Serviced, Ready to Go



PERFECT • ONLY 15,000 MILES. 2000 FORD F250 SUPERCAB 4X4. Be Sure To Check This One, Powerstroke Auto, A/C, Loaded XLT, Alloy Wheels, Tow Pkg, Needs Nothing. Except for you!



2 BLACK SHORTBED 2000 FORD F250 SUPERCAB 4X4
Gorgeous - Like New, Only 8,000 Miles, 5.4 Triton V8, Auto, A/C, Limited Slip Axle



CUMMINS DIESEL 96 DODGE 2500 QUAD CAB 4x4
24 Valve Cummins Turbo Diesel, Auto, A/C, Laramie SLT Pkg, 46,000 Miles



GSP POWERSTROKE 99 FORD F250 SUPERCAB 4x4
8 Foot Bed, Fact Tow Pkg, Capt. Chairs, Console, Limited Slip Axle 53,000 Actual Miles



DARK BLUE SHORTBED 2001 Dodge 2500 QUAD CAB 4X4. Short & Sweet, 24 Valve Cummins Turbo Diesel, Auto, AC, Laramie SLT. Only 33,000 Miles, Limited Slip Axle



4x4 Quad Cab 2001 Dodge 2500 Laramie SLT
Perfect Only 25,000 Mi Remainder New Dodge warranty Cummins Turbo Diesel, Auto, A/C & Plenty More



6 Sp. 4x4 Crew Cab Dually 99 Ford F350
Hard To Find & A Nice One To Have Powerstroke Turbo Diesel, 6 Sp, A/C, Tow Pkg, Alloy Wheels, Capt. Chairs, Console, Running Boards, Only 65,000 Miles



5 SP Diesel Super Cab 4 Wheel Drive 98 Ford F250
Gorgeous Truck Drives New, Powerstroke Diesel, 5 Sp., A/C, Loaded XLT, 8,800 GVW, \$16,900



Black Beauty 2001 Ford F350, Crew Cab 4x4
Gorgeous XLT Powerstroke Turbo Diesel, Auto, A/C - Comfortable 40/20/40 Seat Ford Warranty Only 38,000 Miles

FLATBEDS, WORK & DUMP TRUCKS



2001 Ford 350 Supercab Chassis 4 Wheel Drive
Powerstroke Turbo Diesel 6 Sp., A/C, Loaded XLT, Alloy Wheels



Big 4 Door Dump 2000 Ford F650
Crew Cab, 12 Ft Flatbed Dump, Only 24,000 Miles, Diesel Power, 6 Sp. Trans, A/C, 26,000 GVW, NO C.D.L. License



17 Foot Cube Van 97 Ford E-450 Super Duty
Heavy 14,000 GVW, Rear Lift Gate, Powerstroke Turbo Diesel, Auto, AC, Local Trade, Only 68,000 Actual Miles



450 Chassis 4 Wheel Drive 2002 Ford Super Duty
Only 5,000 Miles, Remaining New Ford Warranty, Powerstroke Diesel, AT, AC



1996 IH 4700 Rollback
22 Foot Jerr Dan Bus, Turbo Diesel, 210 H P, A/C Cruise, Power Windows, Chrome Wheel Simulations, Unser CDI, 25,500 GVW Only 9,600 Miles Like New



LANDMASTER DUMP 98 GMC HD 3500
A Nice Truck Only 64,000 Clean Miles High Output 6.5 Turbo Diesel, Auto, A/C, Tow Package Now \$18,900



L-PAK DUMP 95 DODGE 3500
Cummins Turbo Diesel, AT, A/C, only 59,000 Miles, Tow Pkg Limited Slip Axle, \$18,900



4x4 FLATBED • 2000 FORD F350
Ready & Waiting for You, Powerstroke Turbo Diesel, 6 Sp, A/C, Sht 137 WB 94" C A Ford Warranty



550 Super Duty 2000 Ford XL
5th Wheel Setup Powerstroke Turbo Diesel, 6 Sp, A/C, Heavy, 17,500 GVW



12 Foot Flatbed 99 Ford F350
2 Available Gas & Diesel Low Miles Real Clean They Run Great



DIESEL MOBILE WORKSTATION 99 FORD E-350 HI-TOP CARGO VAN
AT, A/C & Roof A/C, Cabinets, Countertop, Electric Outlets, Lights, Generator and More \$17,900



16,000 GVW 2003 CHEVY DUMP C 4500
12 ft Body - Grain sides Duramax Diesel Allison Auto, Pentil Hitch, Only 2,700 Miles, Like New



2000 FORD 450 CREW CAB MECHANIC'S TRUCK
Very Nice, Clean, 25,000 Miles, Powerstroke Diesel, 6 Sp., A/C, 9 Foot Body, Tow Pkg



CREW CAB DUMP TR. • 2000 FORD 450
Very Nice, Only 10,000 Miles, Powerstroke Turbo Diesel, Auto, A/C, Alloy Wheels, 3 Yd Dump Body



22 FOOT BOX, REAR LIFTGATE 2000 CHEVY KODIAK
Under CDL, 25,900 GVW, 3125 Cat Diesel, Allison Auto, A/C, Side Door

Nicest Trucks In the East • Nicest Trucks In the East • Nicest Trucks In the East • Nicest Trucks In the East • Nicest Trucks In the East • Nicest Trucks In the East