

Creek Hill Welding

50 Mill Street
Christiana, PA 17509
PH#610-593-8188
Web: www.creekhillwelding.com

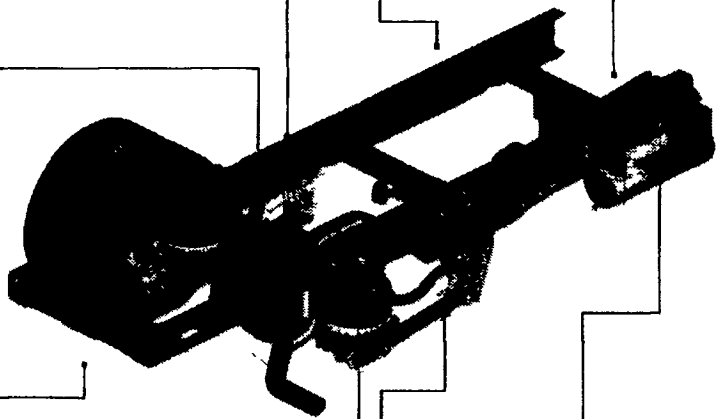
Air Ride For Pick-Up Trucks
UltraRide Chassis Air Suspension
Fords: 250, 350, 450, 550
Chevy: 4500, 5500

Tuned shock absorbers for maximum comfort and stability

Lateral control device assures alignment and tracking, enhancing driving stability

Optional kneeling function allows the rear of the truck to be lowered for easier connection or detachment of your trailer

Parallelogram design allows for improved drive line angle throughout the range of travel



Uses existing frame holes and there are no exhaust modifications

Rate tailored air spring with internal stop, provides best ride and eliminates harsh shocks

Dual height control valves for system stability
• Maintains optimal ride height, loaded or unloaded
• Spec'd for system

Unitized air control system offers protection from weather and road grime, providing longer life, and easier serviceability

USED TRUCKS



1997 DODGE RAM 2500 CLUB CAB 4x4 SLT LARAMIE, Cummins Turbo Diesel, 5 Spd., A/C, Most Options, 8 Ft. Bed, 94K Miles, Met Green & Silver
\$18,900



1999 FORD F250 QUAD CAB 4x4 XLT, Powerstroke Diesel, AT, A/C Most Options, 129K Miles, Silver
\$19,900

2001 OLDSMOBILE SILHOUETTE, 6cyl., AT, A/C, most options, 24K Miles, Black **\$15,900**

2001 DODGE DAKOTA CREW CAB SLT, V6, AT, A/C, Most Options, 83K Miles, Maroon **\$13,500**

2000 CHEV 1500 4x4, 8 Ft. Bed, AT, A/C, C, 38K Miles, Black **\$13,900**

1998 DODGE RAM 2500, SLT/Laramie, 4x4, Quad Cab, Cummins Turbo Diesel, AT, A/C, Most Options, 8 Ft. Steel Flatbed w/Header, 68K Miles, White **\$19,900**

1998 DODGE RAM 2500 4x4, Club Cab, 12 Valve Diesel, AT, A/C, C, 93K Miles, Red **\$17,900**

1998 FORD E350 MAXI-VAN, Powerstroke Diesel, AT, Dual A/C, XL Trim, PS, PB, 16K Miles, White **\$15,500**

1996 DODGE 2500 SLT 4x4, Cummins Turbo Diesel, 5-Spd., A/C, Most Options, 410 Rear, 54K Miles, Green **\$15,900**

1995 FORD F150 XL, 5-Spd., 2WD, 6 Cyl., 135K Miles, Red **\$3,500**

1994 OLDSMOBILE 88 4 Door Sedan, AT, A/C, Most Options, Leather, Traction Control, 70K Miles, Black **\$5,500**

1989 CHEVY ASTRO VAN, 8-Pass, V6, AT, A/C, PS, PB, C, 134K Mi., Black **\$2,000**

SCHAEFFERSTOWN AUTO & TRUCK SALES

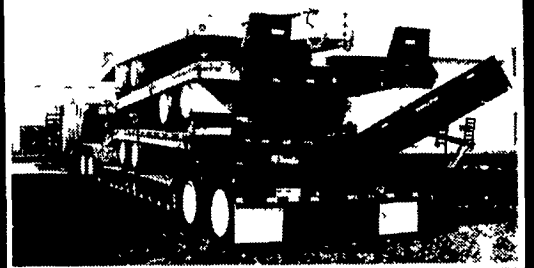
RT. 501, 1-1/2 miles South of Schaefferstown
717-949-2812

NOW IS THE TIME TO BUY YOUR TRAILER! SEE US AT BINKLEY & HURST!

Place Your Order Now and Be Ready For Spring - Good Financing Plans!

Binkley & Hurst Bros. Offers....

EAGER BEAVER... DISCOUNT SALE ON NEW HIGH TENSILE TRAILERS



Eager Beaver

NEWLY IMPROVED TRAILER=GREATER VALUE!

New Upgraded Features of the Easy Loader Series



WIRING HARNESS
• 100% SEALED
• USA Star PL"US POSITIVE LOCK UNDER SEAL)



3-LEAF SUSPENSION SYSTEM
• RATED @ 50,000 LB TANDEM 75,000 LB TRIPLE
• STRONGER
• LONGER LIFE



HUB PILOTED DISC WHEELS
• HIGHER WHEEL RATING
• OUTDOOR DRUMS FOR EASIER MAINTENANCE
• FASTER EASIER MOUNTING
• ELIMINATE WHEEL WOBBLE



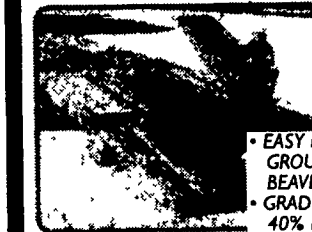
L.E.D. LIGHTS
• BRIGHTER WITH NO FILAMENT TO BURN OUT
• VIRTUALLY UNLIMITED LIFE
• SHOCK ABSORBING CASING

TASYZ... What could be easier?
We've improved our trailers, redesigned to meet your needs. No other trailer company offers the standard features that Eager Beaver trailers have. These details make the difference.
Like our 8-Degree Ramp and our 8-Degree Ramp extension ramps. Plus, our 8-Degree Ramp and 8-Degree Ramp gravity equipment.
So when you are thinking about a trailer, think Eager Beaver.



20 Ton

In Stock
25XPT Easy Loader
25 Ton Capacity
Tri-Axle, 89" Loading Angle
• Capacity 50,000 lbs



LIGHT WEIGHT WOOD RAMPS

• EASY LIFTING FROM THE GROUND OR OFF THE BEAVERTAIL
• GRADE 80 HIGH TENSILE STEEL
• 40% LIGHTER
• DOUBLE ACTING SPRINGS

Binkley & Hurst Bros. Inc. EAGER BEAVER TRAILERS

10HDB 10 Ton Elec. Brake Tag-A-Long ***7,950.00**
10HA-PT 10 Ton Air Brake Tag-A-Long ***10,300.00**
20XPT 20 Ton Air Brake Tag-A-Long ***13,941.00 W/FET**
25XPT 25 Ton Air Brake Tag-A-Long ***18,433.00 W/FET**

CALL Dean M. Weinhold at (800)414-4705

All Trailers In Stock
Colors: CAT YELLOW, RED, Blue, Black

JUST ARRIVED

35GSL/S4S In Stock
35 Ton Detachable Gooseneck Non-Ground Engaging

• CAPACITY 70,000 Lbs • Deck Width 102", Length 22', Height 26"
• Trailer Weight 15,500 Lbs • Overall Width 102", Length 43'
• Tires Eight 255/70R22 5 (H) Radial

BINKLEY & HURST BROS. INC.

133 Rothsville Station Rd.
P.O. Box 0395, Lititz, PA 17543-0395
(717) 626-4705 1-800-414-4705 Fax (717) 626-0996

WILLIAM H. WESSELS USED CARS

811 Route 15 Dillsburg, PA
1-800-440-4433 1-717-432-2918
Notary Public - Temporary Tags



1999 TOYOTA SIENNA V-6, Auto, Dual AC, 18,170 Miles **\$16,900**



1999 FORD E250 EXT. CARGO V-8, Auto, AC, 43,365 Miles **\$13,900**



2000 DODGE GRAND CARAVAN V-6, Auto, 63,000 Miles **\$8,990**



2000 DODGE QUAD CAB 4x2 LARAMIE SLT V-8 Magnum, 34,000 Miles **\$15,900**



99 DODGE RAM 1500 CLUB CAB, 4x4, V-8, Auto., AC, Only 15,358 Miles **\$20,900**



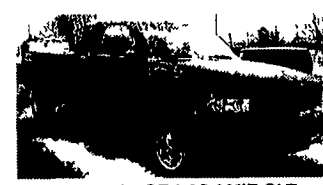
2000 DODGE LARAMIE SLT QUAD CAB Long Bed, V-8, Auto, AC, 63,000 Miles **\$17,900**



2001 CHEVY TAHOE LS Leather, 4x4, Only 1,800 Miles **\$29,900**



01 DODGE RAM 1500 3.9 V-6, Auto, AC, 39,040 Miles **\$11,900**



2000 CHEVY ASTRO AWD Cargo Van, V-8, Auto, AC, 56,310 Miles **\$10,900**



1999 DODGE DAKOTA CLUB CAB 4x4, V-8, Auto., AC, 35,000 Miles **\$16,900**



1999 DODGE RAM 2500 CARGO VAN V-8, Auto, AC, 30,000 Miles **\$12,900**



2000 GMC 3500 EXT. CARGO VAN Turbo Diesel, Auto, AC, 75,214 Miles **\$14,900**



96 FORD F250 4x2, XL, 4.9L 6 Cyl., Auto, AC, 62,000 Miles **\$8,990**



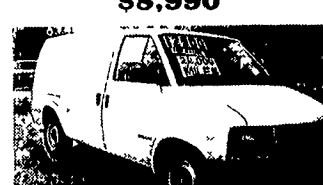
1997 FORD F350 UTILITY TRUCK, 4x4, 460 V-8, Auto, AC, 91,000 Miles **\$14,900**



01 DODGE B1500 Ext. Cargo Van V-6, Auto., AC, 35,000 Miles **\$14,900**



1996 FORD F150 XL 4x4 4.9L, 6 Cyl., 5 Speed, AC, 105,000 Miles **\$6,990**



2000 CHEVY ASTRO CARGO VAN V-6, Auto, AC, 22,270 Miles **\$12,900**



94 DODGE CARGO VAN, V-6, Auto, 120,000 Miles **\$2,990**



1997 DODGE LARAMIE SL, V-8, Auto, AC, Ex Cab, 4x4, Only 20,000 Miles **\$16,900**



1998 CHEVY 3500 CREW CAB UTILITY 350 V-8, Auto, AC, Dual Wheels, 79,810 Miles **\$12,900**



99 CHEVY TAHOE LS 350 V-8, Auto., AC, 80,000 Miles **\$14,900**



1997 DODGE RAM 2500 4x4, V-8, Auto, AC, 80,000 Miles **\$14,900**



1997 DODGE RAM 2500 4x4, V-8, Auto, AC, 80,000 Miles **\$14,900**



1998 CHEVY 3500 CREW CAB UTILITY 350 V-8, Auto, AC, Dual Wheels, 79,810 Miles **\$12,900**