

**34 AUTOS**

'85 Jeep Cherokee V6, 5 spd, good cond, \$2000. 215-679-6347

'55 Chevy Bel Air, 4-dr, turquoise, 32,600 org mi, \$15,000. 717-484-4471, 717-445-6609 eves.

**33 RECREATIONAL VEHICLES**

'98 Fleetwood Mallard trlr, 26ft, like new SL, PS, 6, \$9000. 570-675-3548

17' canoe, 3 yrs old, shed kept, \$600 obo. No Sunday calls. 570-345-2823.

**35 TRUCKS AND TRAILERS**

'89 Ford F350, 7.3D eng, remanufactured motor in 2001, 44,000 approx miles, trans can go along, new clutch, take whole truck wrecked or we will deliver motor, \$1400 obo. 717-656-2213

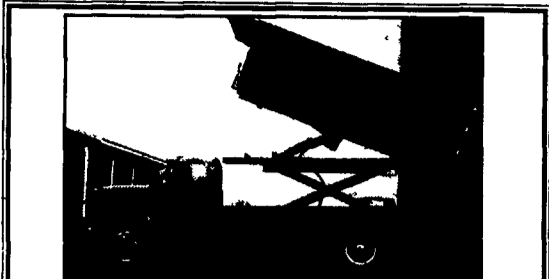
Chevy Suburban Silverado, 1988, fully loaded, sun roof, Cap't chairs, black, \$4800. Enclosed snow mobile trailer, carries 2, \$2300. 717-336-3110

'97 Isuzu NPR box, 16', dsl, auto, A/C, side dr, 119K mi, \$14,900. 717-545-5408.

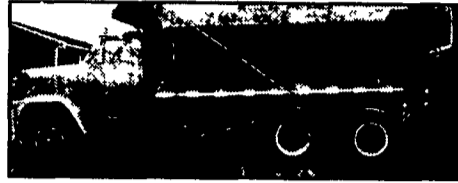
1987 Chevy C70 w/12' flatbed, 366 gas, 5+2, \$3,500. 1989 Hillsboro gooseneck trailer, 28' deck w/4' dove tail, 20,000 GVW, \$4,500. 410-374-9612.

95 KW T600 Aero cab, 450 hp, Series 60, 10 spd, 3.70 Rears, 60 in bunk, \$145,000/obo; 95 Tiltite dump trailer, 40' w/roll tarp \$14,000/obo 1965 Smithco detachable low-boy \$4,000/obo 215-651-2029.

1999 Chevy crew cab dually, 7.4 auto, 4x4, runs exc, 1 owner, well maint, 115K mi, \$12,500 obo. Steuben Co, 607-525-6152.



1978 C70 CHEVY, No Rust, No Dents, Clean In & Out, Alum Tailgate, 14 Ft. Long, 10 Ton Legal, Garage Kept, Titled, 37,000 GVW, Brakes & Tires Ex, New Exhaust, Good Coal - Const - Farm, 5x2 Transmissions, Tilt Hood, 427 Gas, 140,000 Mi



1981 GMC BRIGADIER DUMP TRUCK, Licensed, 58,500, 19 Ton Legal, Bed 5 Yrs Old 15'5" Long, Great Condition, Inspected, Garage Kept, Clean, 238 Detroit, 300 Hp, 9LL Speed, 300,000 Miles

Call After 6:30  
570/966-0883



95 Chevy 3500 Utility Body, 6.5 Diesel, 75,000 Original Miles \$9,500



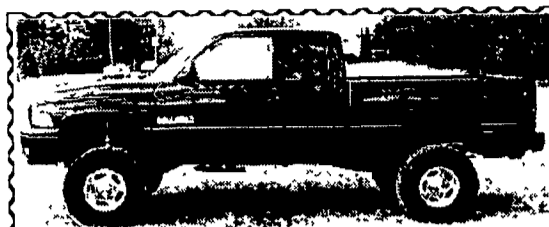
99 Dynaweld Mechanical Detach Trailer 35 Ton, Air Ride, 28' Well \$18,000



85 Ford 9000 Tandem Axle, 22' Flatbed w/Hyd. Boom w/Forks \$9,500

Weaver's Truck & Equipment  
570/523-9598

**•1971 Ford LN700, 26,000 GVW, 16' grain body dump, \$2,200 obo.**  
**•1984 Ford 250 pickup truck, \$500**  
**(717) 647-9492**



**2001 Dodge 2500**  
Cummins 24V, 5 Spd., 4x4, SLT, Posi, R. Slider, Sport, Tow Pkg., Lift, Blk., 29,000 mi.  
**Asking \$27,500**  
**732-580-3674**

Anthony L.  
**LANDIS**  
EPHRATA AUTO SALES  
1589 Division Hwy., Ephrata, PA 17522  
Rt. 322, 1 mi. east of Rt. 222 (717) 355-0644



**1999 Chevy S10 LS, 3 Dr. 4x4**  
V6, 5-Spd., A/C, PW, PDL, 86,000 Mi., Black  
**\$8,900**



**1986 Dodge Dakota Sport 4x4**  
V6, 5-Spd., A/C, Tilt, Cruise, Cas, 92,000 Mi., Red  
**\$5,900**

**35 TRUCKS AND TRAILERS**

**Meadowbrook Auto Sales**  
875 Abbottstown Pike, Hanover, PA  
**717-632-9600 717-633-5789**



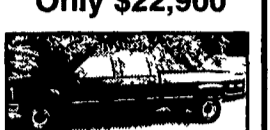
**1998 Dodge Ram 3500 Laramie SLT Dually**  
5.9 Cummins Turbo Diesel, 5 Speed, PS, PB, Air Cond, PW, PDL, Tilt Wheel, Cruise Control, 144,000 Miles  
**Only \$14,900**



**1999 Dodge Ram 3500 Ext Cab 4x4 Dually,**  
Cummins Diesel, A T, PS, PB, Air Cond, Cruise Control, Tilt Wheel, PW, PDL, 82,000 Miles, Super Nice Condition  
**Only \$22,900**



**2002 Chevrolet G-15 Cargo Van**  
4.3 V-6, Automatic, Air Cond, PS, PB, 17,000 Miles  
**Only \$15,900**



**1999 GMC Crew Cab**  
4x4, V-8, 350 A T, PS, PB, A/C, Tilt, Cruise Control, 78,000 Miles  
**Only \$17,900**



**1999 Ford F-350 Lariat Supercab 4x4,**  
7.3 Powerstroke Diesel, A T, PS, PB, Air Cond, PW, PDL, Tilt Wheel, Cruise Control, 129,000 Miles  
**Only \$17,900**



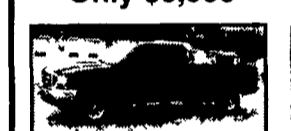
**1989 Ford F-250 4x4,**  
6.9 Diesel, A T, PS, PB, Air Cond, Tilt Wheel, Cruise Control, Great Work Truck  
**Only \$6,900**



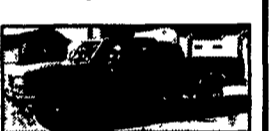
**1992 Ford F-250 Utility Truck**  
351, V-8, 5-Speed, PS, PB, Air Cond, Great Condition, 93,000 Miles  
**Only \$6,900**



**1999 Chevrolet C-3500 Utility Truck**  
6.5 Diesel, Automatic, PS, PB, Air Cond, Dual Rear Wheels, Super Nice Truck, 103,000 Miles  
**Only \$14,900**



**2000 Ford F-350 XLT Ext Cab 4x4,**  
7.3 Powerstroke Diesel, A T, PS, PB, Air Cond, PW, PDL, Tilt Wheel, Cruise Control, Super Super Nice, 114,000 Miles  
**Only \$22,900**



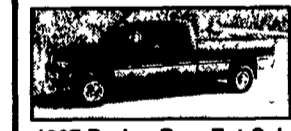
**1994 Ford F-250 Ext. Cab**  
7.3 Turbo Diesel, Automatic, PS, PB, Air Cond, Cruise Control, Tilt Wheel, PW, PDL, 126,000 Miles  
**Only \$9,900**



**1997 Ford F-250**  
351 V-8, Automatic, PS, PB, Air Cond, E-Z Dump Bed, 106,000 Miles  
**Only \$9,500**



**1986 Ford F-250 Ext cab,**  
6.9 Diesel, A T, PS, PB, Air Cond, Tilt Wheel, Cruise Control, PW, PDL, 179K,  
**Only \$5,900**

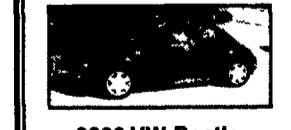


**1997 Dodge Ram Ext Cab 2500 Laramie SLT 4x4**  
5.9 Cummins, A T, PS, PB, Air Cond, PW, PDL, Tilt Wheel, Cruise Control, Leather Interior, 46,000 Miles NONE NICER  
**Only \$21,900**



**1995 Dodge 3500 Dump Truck**  
5.9 Cummins Diesel, 5 Speed, PS, PB, Air Cond, Dual Rear Wheels, 8 Ft Dump Bed, 60,000 Miles  
**Only \$17,900**

**VW-TDI DIESELS, 45+ MPG**



**2000 VW Beetle TDI Diesel**  
5 Spd, PS, PB, A/C, P.W., PDL, Tilt, CC, AM-FM Cass, 45+ MPG, 45,000 Mi  
**Only \$12,900**



**2000 VW Jetta GLS TDI Turbo Diesel**  
4 Cyl., Automatic, PS, PB, Air Cond., Sunroof, P.W., PDL., Tilt Wheel, Cruise Control, 86,000 Miles  
**Only \$11,900**



**1999 VW Jetta GL Turbo Diesel**  
5 Speed, PS, PB, Air Cond, Cruise Control, Tilt Wheel, PDL, 70,000 Miles, 45+ MPG  
**Only \$11,900**



**1998 VW Jetta TDI**  
5 Speed, PS, PB, Air Cond, Cruise Control, Tilt Wheel, PS, PB, Sunroof, 99,000 Miles  
**Only \$8,900**

[www.meadowbrookauto.com](http://www.meadowbrookauto.com)

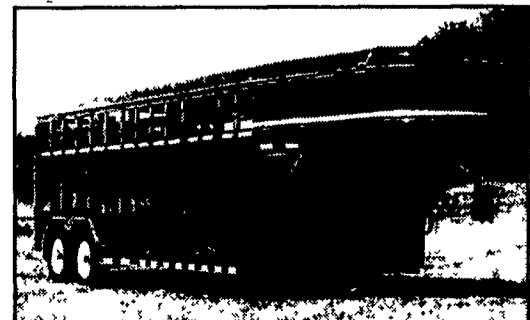
**H.R. Collins & Company Trailer Sales**

5139 Perry Rd., Mt. Airy, MD 21771  
**1-800-784-4584**  
hrcollins.com

Adam 20 Ft. Heavy Duty  
7 Ft. Interior Height  
3 Horse Slant  
All Alum.



Corn Pro & Top Brand Gooseneck & Pintle Hook Types



Corn Pro 20 ft. Stock Gooseneck 7 Ft. Interior Height

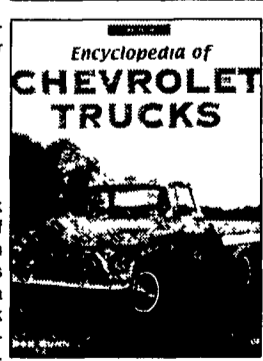
**Crestline Truck Books**

**100 YEARS OF SEMI TRUCKS**

By Ronald Adams This bevy of semi trucks throughout the 20th Century highlights major manufacturers such as Ford, Freightliner, GMC, International, Mack, and Peterbilt, Kenworth & White minor manufacturers like Chase, Sterling, Autocar, Federal, Diamond T This lavishly illustrated volume is arranged chronologically and contains detailed captions about each featured vehicle Also identifies trailer manufacturers 525 b&w and 75 color photographs 320 pgs Hrdcvr Reg. \$44.95 for \$29.95

**ENCYCLOPEDIA OF CHEVROLET TRUCKS**

By Don Bunn This book chronicles the history of Chevrolet truck magnification with complete specifications on every model This book is a must for your personal truck reference library This comprehensive photographic reference delivers the history of every Chevrolet truck manufactured Covers every light, medium & heavy-duty model Chevy ever built from 1918 up through 1999 1000 b&w ill 320 pgs. Hrdcvr Reg \$44 95 for \$29.95



[www.diamondfarm.com](http://www.diamondfarm.com)

DIAMOND FARM BOOK PUBLISHERS • DEPT. LF3,  
P.O. BOX 537, ALEXANDRIA BAY, NY 13607  
We Accept Mastercard, VISA, Check, C.O.D  
ADD \$4.95 Shipping on Books & Videos

**1-800-481-1353**  
**FAX: 1-800-305-5138**