

**BUY,  
SELL,  
TRADE  
OR  
RENT  
THROUGH  
THE  
CLASSIFIED  
ADS  
IN  
Lancaster  
Farming**

**PHONE:  
717-626-1164  
OR  
717-394-3047  
FAX:  
717-733-6058  
Mon., Tues.,  
Wed., Fri.  
8 AM to 5 PM  
Thurs.  
7 AM to 5 PM**

**4 BUILDINGS  
AND  
SUPPLIES**

BARN FLOORING; new,  
kiln dried, T&G, Y-pine  
2x8's for floors and stalls.  
Noah Shirk Sawmill,  
717-354-0192.

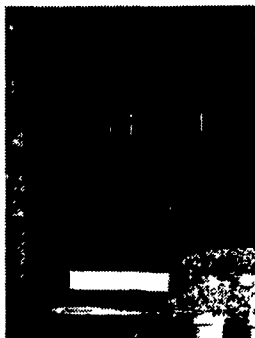


**We specialize  
in construction of  
agricultural buildings**

Dairy Facilities • Pole Barns • Renovations  
Concrete Work • Reroofing • Horse Barns

**WHITE HORSE CONSTRUCTION**  
**1-888-385-2360**  
1-610-593-5559  
*Call us before starting your next project!*

**ENTRY DOORS  
FROM**




**PRECISION  
entry**

Traditionally better doors




**Fiberglass or  
Stainable Steel**  
- the look of  
wood, the  
strength of steel

- Polyurethane core has R-value 13-15
- Heavy duty construction has lots of safety features
- Decorative glass and many other options



**MILLWAY HOME  
IMPROVEMENTS LLC**

265 E. Meadow Valley Rd., Lititz, PA 17543  
**717-733-7160 • 717-627-6886**  
**1-800-247-2107**

  Financing Available 

**Vinyl Windows**

- Popular sizes in stock
- Custom made to fit most any size
- Replacement or new construction
- Bow windows and casement windows available

**Reasonable Price**

**Stoltzfus Vinyl Windows**  
838 White Oak Rd., Christiana, PA 17509  
610-593-2047 7-7:30 AM or leave message

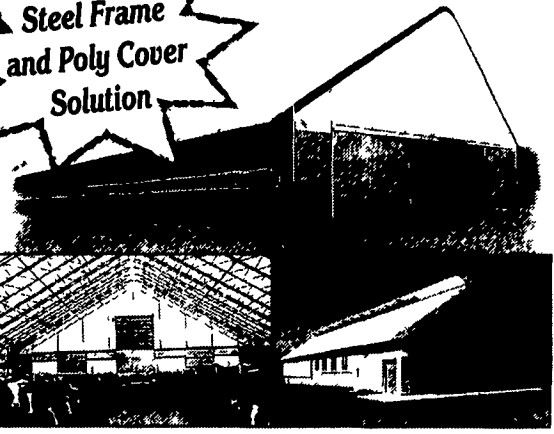


45x64 Oak Barn Frame  
45x54 HH Chestnut Barn Frame  
Late 1700's Oak Log House  
14x22 Post & Beam Shed  
32x38 Oak Bank Barn  
1" WP Barn Siding w/Red Paint  
Barn Stone Foundation (Brown & Tan colors)

WP & Oak House Flooring  
WP Attic Flooring  
1 1/2" x 12" WP Flooring  
Sets of Rafters (50) 4" x 4" x 12"  
(4) Kalamazoo Cook Stoves  
6x6 Oak Beams  
Lots More

**717-528-8831**  
**www.restorationwoods.biz**

**Regal Series Buildings**

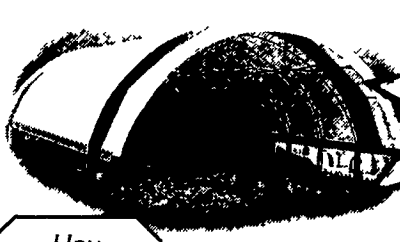


**Steel Frame and Poly Cover Solution**

- Any Width from 30' to 240'
- Professionally Engineered Steel Truss with Poly Cover
- Hot-dipped Galvanized Trusses
- Sectional Roof Covering for Economical Maintenance
- Ratchet Wheels are Used to Keep Each Section Tight
- Open Ridge Vent or Covered by an Overshot
- Overhang
- Many More Options

*Helping you **STRETCH** into the Future with Tomorrow's Buildings at Today's Prices!*

**Sabre Series Shelters**



**Super SALE!**  
38' x 80' \$6567  
38' x 100' \$8208

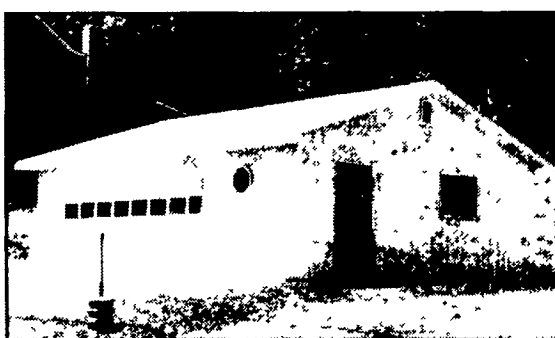
Hay Cattle Machinery Hogs, etc.

- 30' 38' 42' 50' and 65' wide
- 12.5 oz. Durable Poly Cover
- Square Tube Truss Design
- Powder Coated for Longer Life

**We Cover**  
BUILDING SYSTEMS, LLC  
**John E. Weaver**  
1-888-672-2213 • 1-570-672-2213

**"Cover It Up for Profit"**

- 30x50x12
  - 2-10'w x 10'h garage doors
  - 1-3' entry door **\$13,250**
  - 40x60x12
  - 1-12'w x 12'h sliding door
  - 1-10'w x 10'h garage door
  - 1-3' entry door **\$16,500**
  - 40x80x12
  - 1-12" x 12'h sliding door
  - 1-10'w x 10'h garage door
  - 1-3' entry door **\$21,400**
  - 50x96x14
  - 1-14'w x 14'h sliding door
  - 1-12'w x 12'h garage door
  - 1-3' entry door **\$28,400**
- 40# per sq. ft. snow load on trusses  
• Financing Available  
• Call for free literature or see us at [www.pioneerpolebuildings.com](http://www.pioneerpolebuildings.com)



**P.P.B., Inc.**  
*Can We Build One For You!*

- Stock Buildings**
- 24x24x8
  - 2-9'w x 7'h garage doors
  - 1-3' entry door **\$5,750**
  - 24x40x10
  - 2-9'w x 8'h garage doors
  - 1-3' entry door **\$8,400**
  - 30x32x10
  - 2-9'w x 8'h garage doors
  - 1-3' entry door **\$8,400**
  - 30x40x10
  - 2-9'w x 8'h garage doors
  - 1-3' entry door **\$9,250**
  - 30x64x10
  - 2-10'w x 10' sliding doors
  - 1-3' entry door **\$13,250**

Prices included tax, delivery materials, and labor for construction.

**Pioneer Pole Buildings, Inc.**  
716 South Rt. 183, Schuylkill Haven, PA 17972  
Toll Free 1-888-448-2505 Fax 1-888-448-2515  
[www.pioneerpolebuildings.com](http://www.pioneerpolebuildings.com)





- 30 year warranty Everlast painted steel (your choice of color on roof, sides, trim).
- Steel is G 100 painted and heat roll formed by Everlast Inc., the best known roofing made.