

1A CONSTRUCTION EQUIPMENT

Case 584CK fork lift, hydrostatic, 28ft mast, low hrs, nice, \$8400. 717-734-3139

01 Thomas skid steer, 87 hp, only 73 hrs, \$15,900 obo. 484-645-3680.

Wanted: Backhoe for farm use, 4wd or others. 717-258-8161, 717-369-2890

J D EQUIPMENT

Pennsburg, PA 18073 • 215-679-5958

New Thomas Skid Steer Loaders

JD 450G, 6-way dozer \$21,900

JD 555G LoaderCALL

JD 450 Loader \$7,900

JD 310D, 4x4 loader backhoe . . . \$26,500

Repairs • Sales • Service www.jdequip.com

3 SILOS AND UNLOADERS

Martin's Silo of NY,
new & used block silos, shotcrete, relining, fill pipe, distributors, roofs, chutes, replacement doors, general repair.
(585) 526-6575

RELINE SILOS WITH SHOTCRETE

Tear Down/Rebuild Silos • All Kinds of Silo Work
Manure Pits & Walls • Also Concrete Pumping

610/273-9211

S & N Pumping
2440 Beaver Dam Road
Honey Brook, PA 19344

New Van Dale Silo Unloaders

12' thru 24' in stock
Full Stock of Parts

Sale — Service & Installation

Silo Distributors, Fill Pipes, Roofs & Doors

New & Used Silos **VAN DALE**

Selling Van Dale Silo Unloaders since 1959

Will Deliver & Install - Also Feed Bins

McMillen Bros. Inc.

R R 1, Box 134, Loysville, Pa 17047

(717) 789-3961

MAY-CO PLASTIC SILO LINERS

To have mold free haylage, corn silage and hi-moisture grains. Install a May-Co Liner in silos with or without unloaders. Easy to install. Special system for grass silage if requested.

MAY-CO SUPPLY CO., INC.

551 Cobblestone Lane, Lancaster PA 17601

Shop - (717) 399-8232

717-834-3471

Authorized Quality

Stahl Mfg., Inc.

Lee Baker

Parts Dealer

Duncannon, PA

SPRING MAINTENANCE CHECK LIST FOR YOUR HARVESTORE®

- Unloader serviced before first cutting.
- Floor & floor plates checked.
- Breather Bags & Gaskets checked.
- Installed Lancaster Level-Flo 12' Gooseneck.
- We now have stainless steel cutter & conveyor chains.

Not affiliated with A O Smith
Harvestore® Products Inc

ADAM'S SUPPLY

Kelly Ryan Center Line Baggers

Kelly Ryan Vertical Mixers

Kelly Ryan Parts

Versa Baggers

Silage Bags

Bale Tubes

Flex Tubes

Trench Covers

Two Used Baggers: 8 Ft. and 12 Ft.

717-393-9282

REPLACEMENT SILO DOORS

Many Kinds In Stock

• Marietta

• Ficks

• Madison

• Terre Hill

• Lancaster

• Ribstone

Silo Door Hardware

• Butterfly Hinges

• Latches

• Steps

• Ladders

*Silo Doors Made To Order
Bring Pattern Of Old Door*

Willow Road Silo Doors

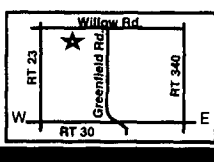
Daniel M King

634 Willow Rd.

Lancaster, PA 17601

Formerly Samuel S Zook

717-394-1004



Lancaster Farming, Saturday, April 19, 2003-D7

ED HIBERLI

New & Used Concrete Stave Silos

Shotcrete Available

Silomatic & Badger Unloaders

Pipes - Distributors - Roofs -

Doors & All General Repair

200 Mt. Rock Rd

Newville, PA 17241

(Office) 717-776-4661

leave message

NOBODY DOES FEED LIKE

VALMETAL

- Silo Unloaders
- Stationary Mixers
- Portable Mixers
- Big Bale Choppers
- Small Bale Choppers
- Feed Carts
- Conveyors
- Hammer Mills
- Roller Mills
- Bale Elevators
- Augers

Lewis N. Martin
(315) 536-3994

8AM to 9PM Mon. - Sat.

J & J SILO CO.

Gordonville, PA 17529

717-661-8251

Harvestore® Silos With or Without Chute



Hammermills



Harvestore®
Replacement Parts



Advanced
lubrication systems

Inventory in Stock

- 25x90 (4) Goliath 74
- 25x60 Unloaders
- (3) 20x80 Goliath 70
- 20x70 Unloaders
- (5) 20x60 Power Sweep
- 20x50 Unloaders
- (2) 20x40 Spartan Unloader
- (2) 20x30 Automatic 200 Roller Mill

Wanted: Your Used Harvestores®

For All Your Unloader Needs

Call ROVENDALE



We service all makes & models of silo unloaders

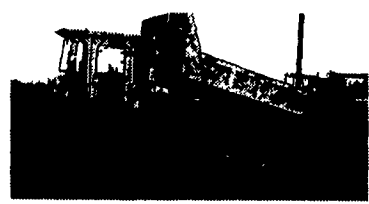
Sales & Service ROVENDALE AG & BARN EQUIP.

WATSONTOWN, PA 17777

570-538-9564 OR 570-742-4226

Exit 31, I-80 to -180 Watsonstown Exit

Hours: Mon.-Fri. 8 to 5; Sat. 8 to 12



Morooka MST-2500 Crawler Dump
rubber tracks, rebuilt engine,
good U/C

CALL



84 Cat 973
Excellent UC, OROPS \$36,500



95 JD 744E Log Forks w/Grapple
New Rubber, Ride Control, AC \$42,500



92 Terex Haul Truck 3066, Cummins
Diesel, Good Condition \$36,000

Trojan 232 25 Ton 6x6
Haul Truck \$28,000

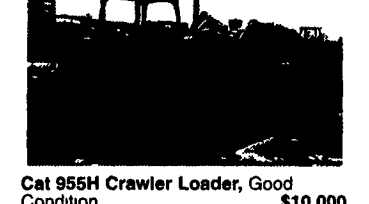
92 Randon 628 6x6
25-Ton Haul Truck \$28,000



(2) 99 Case 95XT, 7100 Hrs \$13,500
Case 1840 \$8,000



Ford A64 Wheel Loader, Cab
w/Heat \$14,000



Cat 955H Crawler Loader, Good
Condition \$10,000

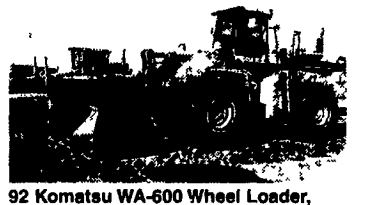


88 Cat 963, OROPS, \$28,500

88 Cat 963, Cab, GP Bucket \$36,000

92 Cat 963, Cab, GP Bucket \$42,000

Cat 977L 14X Series \$19,500



92 Komatsu WA-600 Wheel Loader,
435hp, 7 1/2 yd Bucket,
Ready to Work \$35,000

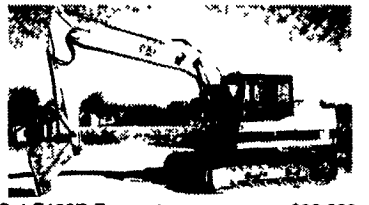


86 Cat D5H, Good Undercarriage,
Tight Blade \$39,000

92 Cat D5H XL, Cab, 6-Way Blade \$42,500



92 Cat 312 Excavator \$30,000

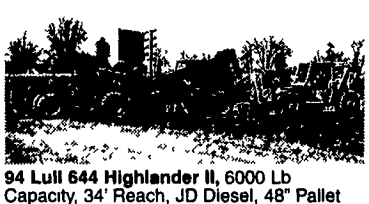


Cat E120B Excavator \$23,000

1991 Hitachi EX120 \$24,000



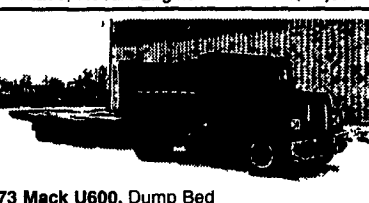
88 JD 450G, Good U/C, 6 Way
Blade, Rebuilt Engine \$19,000



94 Lull 644 Highlander II, 6000 Lb
Capacity, 34' Reach, JD Diesel, 48' Pallet
Forks w/Tilt \$27,000

92 Lull 844B, JD Diesel \$26,000

94 Gehl 663, Forks & Bucket, JD Diesel \$25,000



73 Mack U600, Dump Bed
Good Rubber \$6,000

18' Tandem Axle Tilt Bed Tag-Along
Air Brakes \$3,500

EQUIPMENT

JD 555 Crawler Loader \$14,000

Cat 980B Wheel Loader w/Forks \$18,500

94 Cat 416B 4x4, Ext. Hoe \$25,500

PAVING EQUIPMENT

Hyster 350C Roller \$5,000

Case 252 Tandem Vibratory Roller \$6,500

95 Ingersol Rand BA30 Tandem Vibratory Roller \$6,500

Stone Wolfpack 2500 double drum asphalt roller \$2,500

Weaver's Equipment Sales

RD#1, Box 418, Milton, Pa. 17847

Phone: 570-523-9598