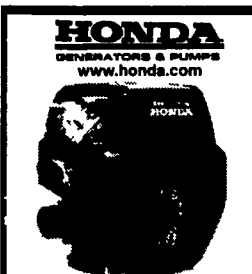


FARM EQUIPMENT



Keeping it going smoothly and quietly

APRIL SPECIALS

Honda Engines Special

GXH50	2.5 HP	\$239
GX100	3 HP	\$256
GC160	5 HP	\$210
GX120	4 HP	\$285
GX160	5.5 HP	\$299
GX200	6.5 HP	\$345
GX240	8 HP	\$485
GX270	9 HP	\$490
GX340	11 HP	\$555
GX390	13 HP	\$580

Elec Start Engines

GX160	5.5 HP	\$435
GX270	9 HP	\$615
GX340	11 HP	\$675
GX390	13 HP	\$695
GX610	18 HP	\$935
GX620	20 HP	\$965
GX670	24 HP	\$1,195

Mufflers for 18 - 20 - 24 HP Engines \$135

UPS Daily Shipping Rates

2.5 HP	thru	6.5 HP	\$10
8 HP	thru	13 HP	\$25
18 HP	thru	24 HP	\$45

Blue Mt. Small Engine Service

1490 Three Sq. Hollow Rd.
Newburg, PA 17240
717-423-5358

USED EQUIPMENT

TRACTORS

Case IH 5230, MFW
Case IH 685, 60hp, 2WD
IH 5288, 2WD, Cab
JD 4620 ~~SOLD~~ wheels
Kubota 2900 GST, 1996
Farmall Super C w/ Cultivator & Disc
MF 3120, ~~SOLD~~ Cab 2000 hrs

COMBINES

(2) Case IH 1640 w/Head
(2) IH 863 Corn Head

HAY EQUIPMENT

NH 56, 8' Rake (W)
NH 718 Forage Harvester (W)
Case IH 8450 Round Baler (W)
JD 336 Baler (W)
NH 488 Haybine (W)
NH 479 Haybine (W)
Ag Wrap Bale Wrapper (W)
Massey 9 Ft Rake (W)

IRRIGATION EQUIP.

Long 1100' Hard Hose
Bauer 125-3400T, Hard Hose,
4"x918" Hose, Turbine Drive
JD 6414T Power Unit
w/Clutch, H-125 H.P.,
1800 RPM
Hobbs 1375 Hard Hose,
3 6"x1100' Turbine Drive

LAWN EQUIPMENT

Grasshopper 411R w/42" deck
Woods 1855, 52" Deck,
0-Turn
Cub Cadet 2185, 46" Deck
Cub Cadet 1860 w/46" Deck

MISC. EQUIPMENT

White 508 16" 4B Plow
(2) 18 4x38 rear Tires Rims & Disc
(2) 14 9x24' Tires Rims & Disc
Buster Bar For 5B Plow
Unverferth Rolling Harrow II,
28ft
Unverferth ~~SOLD~~ Perfecto II
harrow
Hardi An Blast Sprayer,
50 gal
Case IH 5100 Grain Drill w/
Grass Seed Attach 24x6
Troybilt tiller, horse model
Rears an blast sprayer,
3 pt 125 gal

Farm-Rite Inc.
122 Old Cohansay Road
Shiloh, NJ 08353
800-752-6373
856-451-1368
Woodstown, NJ
800-848-5051

SALE APRIL 26th
Doors Open @ 8 A.M. Close @ Noon
FREE Construction Trailer & Other Cheap Used Building Components!!
Doors, Windows, Hardware, Fixtures, and Lots More!

NO LUMBER
Dolan Construction, Inc.
401 S. 13th Street
Reading, PA 17602
610-372-4664 Matt



6000 lb. Forklift, DSL, all terrain, on rubber belted steel wheels, have rubber tires & chains, enclosed cab, 14 ft. lift, 48" forks, side shift, 4 spd forward & reverse trans., diff. lock, work lights front & rear, complete new wiring, g. cond., too big for my shop.

Aaron's Welding, 717-529-0918 lv msg Lanc. Co., PA



4x4 Ford - 68,613 Miles
3 Section Boom - 14,000 Lbs.
\$5,000 Or Best Offer
(570) 992-7047



1997 Case 586E 4x4, rough terrain forklift,
21ft. see thru mast, side shift, 6000 lb. lift,
1651 hrs., new tires
\$22,500 856-769-0787



TOYOTA 2DSK8 DIESEL SKID LOADER
SOLID TIRES \$6,000

Heavy Equipment Loader Parts
Rt. 22 Grantville, Pa
(717) 469-0039 help10070.com



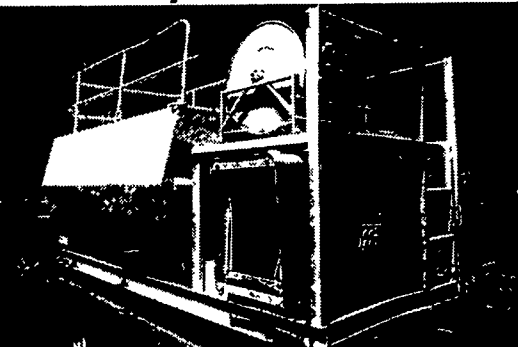
1971 CAT 941 Track Loader, under 100 hrs. on motor & trans., 50% undercarriage \$7,500 firm 609/561-6510 eve. S Jersey



\$23,000

Case 850C Crawler Loader
Backhoe, Rear PTO, GP Bucket,
Just Serviced, Good Condition,
717-586-0399

"Hydro Seeder"



1988 Reinc 1500 gallon Hydro Seeder,
skid mounted, John Deere diesel, engine runs good, hydro seeder unit needs minor repairs, call for details. **\$3,990**
Call Ray 856-424-6300

Jonestown Ag Repair & Supply Store

170 Old Rt 22, Jonestown, PA 17038
Darvin Weaver
717-865-0135 fax 717-865-0233



Large selection of Interstate Batteries

Mystik Luricants * Roller chains
* Custom made hydraulic hoses
* Napa Belts & Filters
* Hardware Skid loader attachments available
* Galaxy Skid loader ties & other brands

Complete Skid Loader Repairs Our Specialty
Our store replaces Skirksville Farm Supply

INDUSTRIAL EQUIPMENT INC.

215 South Washington Street, Boyertown, PA 19512

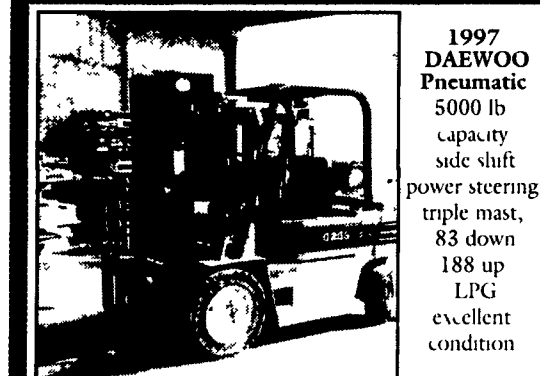
FORKLIFTS
SALES * SERVICE * RENTALS
NEW KOMATSU FORKLIFTS
ALL BRANDS USED/RECONDITIONED
GAS * LP * DIESEL * ELECTRIC
PARTS & SERVICE FOR ALL BRANDS
AERIAL & SCISSOR LIFTS FOR SALE & RENT
LEASING AVAILABLE

SPECIAL - NEW 27 x 48 PALLET JACKS \$350.00

MasterCard VISA
PHONE (610) 369-9778 FAX (610) 369-9858

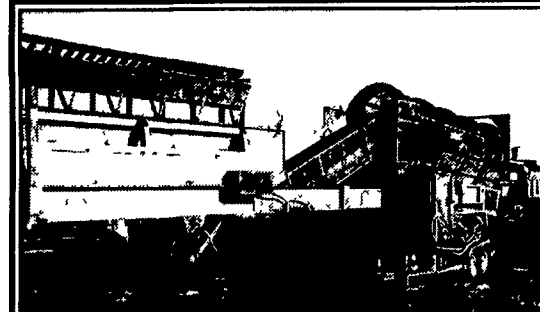


Case-580-C - Cab, 2wd, Ext. Hoe
1983 - 6080 Allis Chalmers w/460 Loader, w/Duals (4x4), (3650 Hrs) . . . \$17,000
1990 - Bo-Mag - 150 AD,
Dbl Drum Roller . . . \$4,800
Case-450 Loader, 1980 - (79 Hrs),
New Motor . . . \$9,500
14 Ton - Kruger Trailer, 4 New Axles,
Model/D7000 . . . \$6,000
1977 - GMC 6500 Truck, w/5 ton Pittman Pole
Cat Crane, Model PM 50,
w/20' Jib. \$5,500
860 Bush Hog, 3 pth, Backhoe. \$2,800
443-553-1262



1997 **DAEWOO**
Pneumatic
5000 lb
capacity
side shift
power steering
triple mast,
83 down
188 up
LPG
excellent
condition

C. Betz Fork Lift Sales 717-485-0410



Trommel 616 Screen Machine
\$42,500
814-329-2783



1973 580 B Case Backhoe, good working condition, 4 rebuilt cyls., some new hoses.
(610) 286-0606

\$6,800



SALE OR RENT

Cat 941/951 CRL Loader
8 Crawler Loaders To Choose From

Heavy Equipment Loader Parts, Inc.
10070 Allentown Blvd, Grantville, PA 17028
No Sunday Calls **(717) 469-0039**



1989 Case 621, Wheel Loader, 4x4, Cab, 4-in-1 Bucket, 80% Tires, Formerly Municipality Owner, 8400 hrs, Ex Cond. . . . \$25,500



1988 JCB 525B Boom Lift, 22 ft Reach, 5500 Lb. Lift, 4x4, New Tires, 4400 Hrs . . . \$12,000



1991 Case 580K 4x4 Sims Cab Ex-hoe JD Controls, Tires @65%, 5058 Hrs, Clean \$17,500



1986 Case 580 Super E 4x4 Cab, Ex-hoe, 6079 Hrs, Tires @ 60% . . . \$15,500

Dull Equipment Co., Inc.
1002 Rte. 501 S., Newmanstown, PA 17073
Sales, Service and Rent • Financing Available
717-949-3451 • 717-629-7463
FOR MORE INVENTORY, PLEASE VISIT OUR NEW WEBSITE: www.dullequipment.com