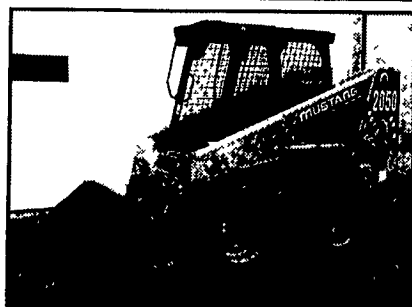


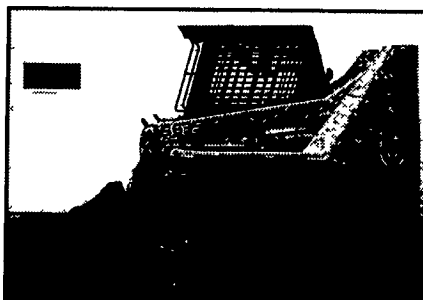
JD 5520, 4wd, 90 hrs., w/541 loader, 3 pt., 2 remotes, cab, heat, air. **\$39,900**  
717-432-5160 lv. msg. No Sunday Calls.

- Super C Farmall tractor with 7HP sicklebar mower, good condition. \$1800
- 3 pt. hitch Kubota FS1270 rototiller, as new. \$900
- 3 pt. hitch Kuhn 5' sicklebar mower, excellent condition. \$450
- 3 pt. hitch Woods rotary mower, 3 blades. \$800

610/593-7290 Evenings



2000 Mustang 2050, 580 Hrs., T-Bar, Excellent Condition **\$11,900**



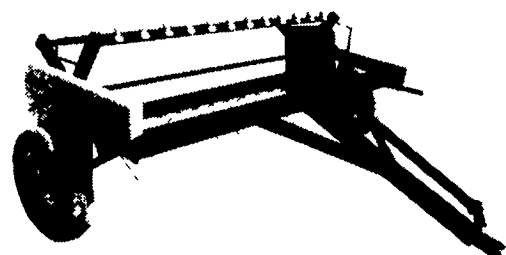
98 Gehl 5635, 1105 Hrs., 40% Tires **\$11,500**

- 96 Bobcat 853, 2140 hours. . . . . \$8,500
- 98 Case 1840, 2830 Hrs., 50% Tires. . . . . \$9,000
- New Pallet Forks . . . . . \$495
- 72" Root Grapples. . . . . \$2,200

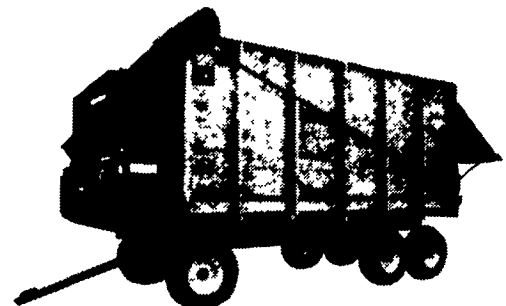
**Weaco Equipment**

4009 Conrad Weiser Parkway Womelsdorf, PA 19367 **610/589-5555**

**NOW AVAILABLE**



Heavy Duty Hay Tedder

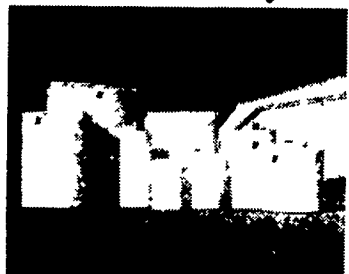


Hydraulic Heavy Duty Forage Box

**STOLTZFUS** 76 S. Vintage Rd. Paradise, PA 17562 **717-442-9148**  
Welding & Repair

Formerly manufactured by Zimmerman Mfg. **DEALERS WANTED**

**POLY TANKS**



Best UV Protection  
Best Life  
Best Value



AVAILABLE AT: **RISSEY GRAIN**

RED LION GRAIN CENTER HOLTWOOD, PA.  
(717) 244-6909 SEED & FERTILIZER (717) 284-4628 (717) 284-3362



Ball Valves  
Quick Couplers  
Pumps  
Filters



**SPRING SUPER SAVERS**



**GT20 Garden Tractor**  
20 HP Kawasaki Liquid Cooled with Hydrostatic Trans. and 52" Deck

Suggested Retail **\$8,760**  
Spring Super Saver **\$5,995**



**TC21D Boomer Compact Tractor**  
21 HP, 4 Wheel Drive with Hydrostatic Trans. and Turf Tires

Suggested Retail **\$14,142**  
Spring Super Saver **\$10,550**



**MC28 Commercial Mower**  
28 HP Diesel, 4 Wheel Drive with Hydrostatic Transmission and 72" Rear Discharge Deck

Suggested Retail **\$20,250**  
Spring Super Saver **\$16,500**



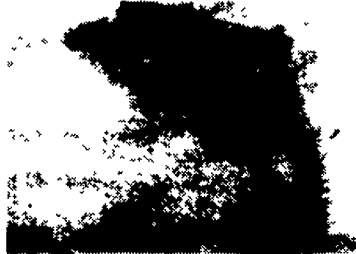
**B27P Standard Duty Bale Wrapper**  
Wraps Bale Sizes Up To 48" Wide x 60" Diameter With/Bale Loader and Rear Unload 2001 Leftover

Suggested Retail **\$12,464**  
Spring Super Saver **\$10,250**



**Lightweight Header Plus Deluxe Features Model 1465 Haybine, 9' Cut**

Suggested Retail **\$14,067**  
Spring Super Saver **\$10,550**



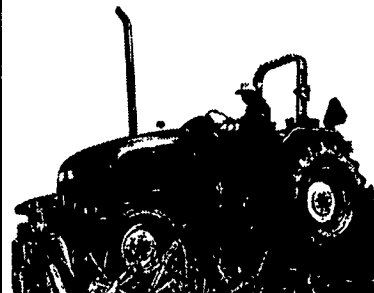
**Model 1411 10 ft. 4 in. Cut Diskbine with Roll Conditioner**

Suggested Retail **\$20,633**  
Spring Super Saver **\$15,600**



**The All New TB Series Tractors**  
"Performance Upgrades and New Features"  
TB100 80 HP 2 Wheel Drive Tractor with 16x4 Dual Command Transmission

Suggested Retail **\$28,950**  
Spring Super Saver **\$23,350**

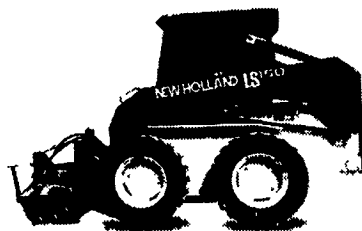


**TL90 76 HP 2 Wheel Drive Tractor with 12x12 Syncro Command Trans.**

Suggested Retail **\$28,485**  
Spring Super Saver **\$22,350**

On the farm, in the field or on the jobsite.

See us for great deals on Skid Loaders.



Cash Rebates up to \$1,000  
0% APR Financing for up to 24 Months

**NH Hay, Forage, Skid Steer Parts**

Dismantling the following equipment:

- Balers 567, 315, 283, 66, 68, 268, 269, 270, 276, 281, 310, 311, 320, 273
- Thrower 54, 70, 75
- Haybines 469, 479, 488, 489, 499, 1495, 411 Discbine
- 463 Disc Mower
- Forage Harvester, 717, 718, 770, 880, 890, 892, 900, 1880, 1890, 1895 Field Queen STD-SP
- Skid Steers L35, L775, L555, L781, L785, 778

We Purchase NH Eq. For Salvage!!

AG Industrial Inc. Rising Sun, MD 1-800-442-5043 Ask for Terry or Rick in Service

**USED TRACTORS**

- Ford 8N, 600 1710
- NH TC25 w/loader & Hoe
- NH 3415
- TN65 w/Loader
- MF 50 ind T/L
- MF 3090 4WD Cab
- MF 165 w/Loader
- 185 Cub Lowboy
- Farmall C w/cultivators

**HAY EQUIPMENT**

- Hesston Mower - Conditioner

**SKID STEER LOADERS**

- NH L553, LX665, LX885, LS180
- Bobcat 763H

**MISC. EQUIPMENT**

- Brillion Chisel Plow
- Kawasaki 2WD & 4WD Mules
- Yamaha Moto 4
- Ford 4' Finish Mower
- Woods Front Deck Mow'n Machine



**NEW HOLLAND**

LESLIE G. FOGG, INC  
563 Stow Creek Rd  
Bridgeton, NJ 08302  
Phone 856-451-2727  
856-935-5145  
Fax: 856-451-3029

Prices on Advertised Equipment Good through 4/30/03 and Subject to Prior sale.

(717) 354-4191 (800) 346-8319

110 South Railroad Ave., New Holland, PA 17557  
Monday thru Friday 7:30-5:00; Saturday 7:30-Noon. Other times by appointment.  
Visit our Web Site: www.abcgroff.com

Dedicated To Quality, Driven To Keep You Satisfied

