

335 High School Students To Compete In Penn State Envirothon

BEDFORD (Bedford Co.) — The 20th Pennsylvania State Envirothon will take place at Penn State Mont Alto, near Chambersburg, Franklin County, Monday and Tuesday, May 19 and 20.

Approximately 335 high school students will compete in the areas of aquatics, forestry, soil and land use, wildlife, and current environmental issues. The environmental issue for this year's event is Farmland Preservation and Conservation.

County conservation districts from 67 of Pennsylvania's 67 counties are expected to sponsor teams to this year's competition. The county representatives will qualify for the statewide event by winning local Envirothon events involving over 15,000 youth from nearly 500 high schools across the Commonwealth.

Monday, May 19, teams will have the opportunity to participate in an Oral Component event as part of the Pennsylvania State Envirothon. At this time the oral component is voluntary; therefore, scores from this segment of the event will not be included in the team's overall score. Separate awards will be given to the top ten oral component teams. The station tests will take place on Tuesday, May 20.

The Pennsylvania Envirothon along with its partners — The USDA Natural Resources Conservation Service, Pa. Fish and Boat Commission, Pa. Game Commission, Pa. DCNR Bureau of Forestry and State Parks, the Pa. Department of Environmental Protection, and the Pa. Department of Agriculture — assure the continued success of the program. These committed partners provide educational reference materials for over 700 participating high school teams as well as technical expertise, knowledge, and manpower at not only the state event but also at 66 county events.

Pennsylvania's sixty-six county conservation districts, the State Conservation Commission and the Pennsylvania Association of Conservation Districts sponsor the Envirothon program.

Special project funding from the State Conservation Commission enabled the program to become established statewide in 1984. Corporate sponsorship continues to allow the Pa. Envirothon Board of Directors to ensure a quality event for all those who participate. The program's first corporate sponsor was the Hershey Foods Corporation from 1992-1997.

In 1997 the program secured corporate sponsorship from Air Products and Chemicals Inc. and the Pennsylvania Outdoor Writers Association. In 1999, the Pennsylvania Power and Light (PPL) Company became a sponsor. This year, the Nestle Water North America Inc. has joined the Envirothon as a corporate sponsor.

Pennsylvania's Growing Greener grant program has enabled the Envirothon to upgrade its website, develop and purchase education and outreach resources and tools as well as sustain the program.

Sponsors and partners of the program will present awards to the top ten teams. Station awards are also presented to the teams with the highest score in a specific area.

The winning team will represent Pennsylvania at the 2003 Canon Envirothon, which will take place in Emmitsburg, Md., on July 26-Aug. 1, on the campus of Mt. Saint Mary's College. The Pennsylvania Fish & Boat Commission and the Pennsylvania Game Commission provide grant funding to cover transportation and lodging for the five-member team and its advisors.

Pennsylvania Farm Bureau Asks PMMB for Premium Hearing

CAMP HILL (Cumberland Co.) — The Pennsylvania Farm Bureau (PFB) has petitioned the Pennsylvania Milk Marketing Board (PMMB) to conduct a hearing regarding the continuation of the over-order premium for Class I (fluid) milk.

Currently, the over-order premium is set at \$1.55 per hundred pounds of milk. This represents a \$1.40 premium, along with an extra 15 cents fuel adjustment. The premium is set to expire on June 30.

"We hope the board will schedule a hearing date in the near future, which would allow them sufficient time to consider and act upon the pricing issue before June 30," said PFB President Guy F. Donaldson.

"We know farmers continue to experience historically low prices and we would expect the board to consider continuing the premium at some level for the remainder of 2003," said Donaldson.

Since 1988, PMMB has mandated an over-order premium be added to federal order prices for Class I (fluid) milk produced, processed and sold within Pennsylvania's borders.

Weekly Dairy Market Outlook

(Continued from Page A16)

caution that most of the variation in Class III prices over the last 10 years was as a result of big swings in milk production levels. Demand steadily increased because of strong growth in the U.S. economy. That is not the case now, because the economy is much weaker. Hence my conservative estimates.

What the market is looking for is some response in the milk supply to low milk prices. This would be a leveling off or reduction in the number of cows on farms. I have a number of contacts in the West who tell me that the month-after-month growth in cow numbers in the western half of the U.S. will begin to slow. Most have maxed out their cow facilities and milk production per cow. Others are facing steep losses, and financing for further expansions just may not be there.

Another factor that could really help is for the economy to show signs of improvement. The recent Coalition successes in Iraq will go a long way to improve

consumer confidence, eradicate some of the terrorist threats that many would-be travelers face, and help Wall Street get back on its feet. Hopefully consumers will feel better about their lives and begin to spend more. A stronger economy will very likely translate into stronger spending on dairy products.

So, as you tear open your milk checks and look at the bottom line, remember, things will be improving. It's just a matter of how much milk prices will strengthen by the fall. My estimate of a Class

III price peak of \$11-\$12 per CWT will be achievable if we have some reduction in cow numbers and a slight improvement in the economic outlook.

Next week I'll be reporting to you from Moldova, a tiny country sandwiched between Romania and Ukraine. I'll be doing some volunteer work there with a small dairy cooperative through the Citizen's Network for Foreign Affairs. If the technology works, I should be able to update my Website from the capitol city of Moldova.

Here's something *Lancaster Farming* subscribers have been waiting for: the 2003 *Lancaster Farming Fair Guide* booklet, scheduled to premier May 24. Thousands of our readers count on *Lancaster Farming* to provide them with the latest fair news during the summer and fall season. You can look toward the fairs with this extensive directory, covering an eight-state region. Planned is a list of fairs and fair association news. Will photos of your family turn up in the book from fairs around the region? Check it out!

DPHYFIELDUSEN



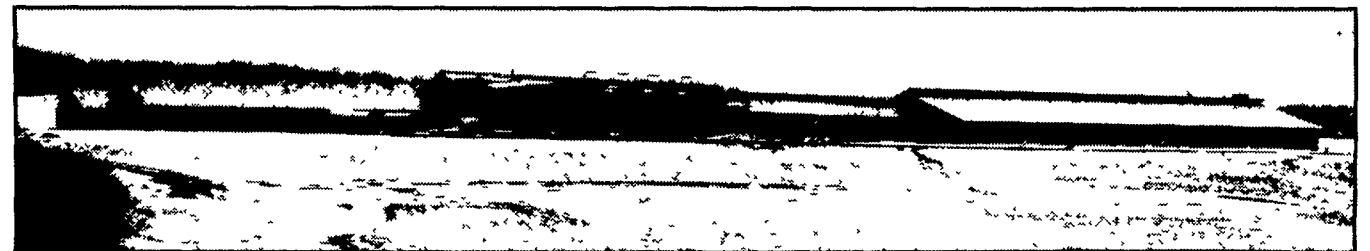
From Left: Kirk, Scott, Joel, Betty & Roy Hetrick

HETRICKDALE FARMS

Berks County, Bernville, PA

Tuesday, April 29, 2003

11:00 AM - 3:00 PM
900 head Dairy Facility
expanded to 1200 head



Designed and Constructed by **Triple H Construction**, Ephrata, PA

Directions: Take Route 422 to Route 419. Turn north on 419 to the second road on the right which is Bernville/Christmas Village Road. Go the Host Church Road. Go 1/2 mile to the first road right, which is Hetrick Road. Go 1/4 mile to the job site on the left. The farm lane enters at the sharp turn.

FEATURING:

- 48 Stall rotary parlor
- Direct load into milk tankers
- 64 x 132' parlor & holding area
- 91' x 224' special needs barn
- (2) 94' x 640 4 row freestall barns
- HDPE 2 stage lined lagoon
- Flush system by Agpro

VENDORS:

- Monsanto
- Kathy Barry Nationwide Insurance
- Sturdy Built
- Albers Equipment
- Genex
- Land O' Lakes
- Willow Creek Veterinary Asso.
- Shank Door
- Cattle Care Services
- Timber Tech Engineering

TRIPLE H Construction

717-738-2142

800-874-7531 • 800-TRIPLE-1
www.TripleHConst.com

430 Springville Road • Ephrata, PA 17522
Custom Builders of Dairy, Storage, & Commercial Buildings

Mountain View Supply, Inc

5104 Old Rt. 22 • Hamburg, PA 19526
610-488-1025

WESTFALLA SURGE



allfirst

A Division of Manufacturers and Traders Trust Company

John W. Risser, Lancaster
717-560-3175
Wayne A. Steinour, Hanover
717-630-4539

Leroy Schannauer Plumbing & Heating

1919 Old Lancaster Pike
Sinking Springs, PA 19608
610-777-0304



1942 Camp Swatara Rd.
Myerstown, Pa 17067
Ph: 717-933-8853
Fax: 717-933-8078